

ENFIELD DISPATCH

Nº. 11 THE BOROUGH'S FREE COMMUNITY NEWSPAPER

AUG 2019

NEWS

Council declares
'climate emergency'
after Extinction
Rebellion demo

P. 2

FEATURES

The boss of Enfield
Carers Centre on the
help available for
local carers

P. 5

COMMENT

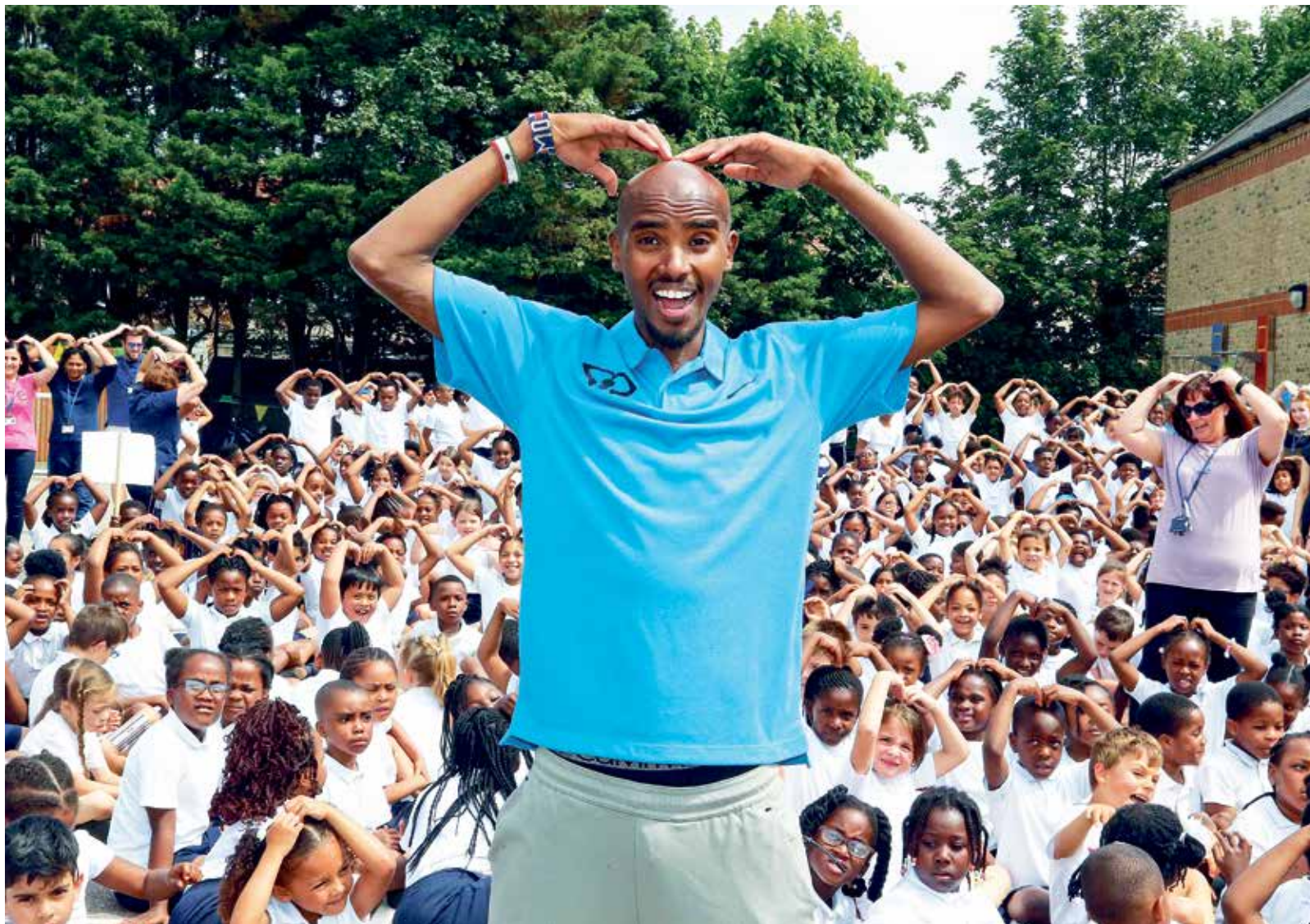
Enfield resident on
why the government
should change its
spouse visa laws

P. 8

ARTS & CULTURE

Looking ahead to this
month's 'Broomfield
Blues' series of
Sunday concerts

P. 13



Four-time Olympic champion Sir Mo Farah visited St Edmund's Roman Catholic Primary School in Edmonton to join pupils on a jog around their playground – promoting the 'Daily Mile' campaign which aims to ensure children get regular exercise every day. Mo said: "It's really important children get into a good daily routine."

Minister quizzed by MPs over Enfield health funding

BY JAMES CRACKNELL

A government minister was forced to answer questions in parliament about Enfield's "unfair" allocation of public health funding – and admitted it was based on out-of-date information. Health minister Seema Kennedy fielded questions from Enfield North MP Joan Ryan and Enfield Southgate MP Bambos Charalambous over why the borough gets just £48 per head of population when other London boroughs get far more, such as Kensington and Chelsea's £130 per head.

The Conservative minister was quizzed by the two MPs at Westminster Hall within the Houses of Parliament, following a long-running 'Fairer Funding' campaign led by Enfield Over 50s Forum. Monty Meth, the forum's 93-year-old president, attended the debate last month and later told the *Dispatch*: "The forum scored a bullseye when we forced public health minister Seema Kennedy out of her bunker to answer why public health in Enfield is perpetually under-funded. "While she made no attempt to answer why Enfield's grant is so much lower than other London

boroughs, she admitted this was 'historical'. "It means we'll always be under-funded unless councillors and community leaders cease sitting on the sidelines and join us in demanding fairer funding for Enfield." Joan Ryan had begun the half-hour debate on Tuesday 16th July by paying tribute to the work of Enfield Over 50s Forum. The Independent Group for Change MP said: "Their typically dogged campaign to highlight cuts to Enfield's public health grant and the disparity in per-person funding has forced this issue to the top of our community's agenda.

"The minister should be well aware of the forum's work on this matter, given the number of letters that its members have written to her department – although sadly they have not received a considerate ministerial response. "Enfield has some of the most deprived and poverty-stricken wards in the country, and we all know that poverty and poor health are inextricably linked. According to a recent report by the Child Poverty Action Group, our borough is one of 20 local authorities in the UK

CONTINUED ON PAGE 2



enfielddispatch.co.uk



@EnfieldDispatch



/EnfieldDispatch



enfielddispatch@socialspider.com



ED.

Nº.11
AUG 2019

Enfield Dispatch is the borough's free community newspaper. We publish monthly and distribute 10,000 free copies of each issue to cafés, pubs, community centres, libraries, GP surgeries, schools, hair salons, and outside railway stations.

Publisher
David Floyd

Editor
James Cracknell

Designer
Jonathan Duncan

Project Manager
Anna Merryfield

Contributors
Simon Allin, Pamela Burke, Tom Ruxton, Andrew Gurr, Peter Leedham, Paige Ballmi, Sabri Ozaydin, Claire Fisher, Zack Ntim, Patrick Samuel, Natasha Boydell, David Thomas, Sahira Raja, Jonathan Landi, Andrew Warshaw

CONTACT

Call 020 8521 7956

Email EnfieldDispatch@socialspider.com

Post Salisbury House, Bury Street West, Enfield N9 9LA

ADVERTISING

Contact **Klaudia Kiss:**

Call 020 8521 7956

Email klaudia@socialspider.com



We are grateful to Love Your Doorstep for their ongoing support



Enfield Dispatch is a member of IMPRESS: The Independent Monitor of The Press. For more information on the Dispatch's complaints policy and how to make a complaint visit: enfielddispatch.co.uk/complaints

► CONTINUED FROM PAGE 1

with the highest levels of child poverty. There are almost 40,000 children in poverty, or four-in-ten children in the borough.

Joan said Enfield Council's ability to deliver public health services was being seriously affected by the lack of adequate government funding. She said: "Enfield is one of the communities to really bear the brunt of these savage cuts. Our borough's grant is the ninth lowest in London, at £48 per head of population, compared with the London average of £71, and we are getting £2 less per person this year than last year. In total, we are receiving £440,000 less from the public health grant this year than in 2018."

North London boroughs Haringey,

Camden and Islington receive £70, £99 and £104 per head respectively. Asked why, health minister Seema Kennedy said: "When responsibility for local health functions moved from the NHS to local government in 2013, funding for relevant services was transferred to individual local authorities. That was based on historical local spend and the process revealed huge variation across the country. The funding for Enfield is based on what the NHS had been spending there up until 2013."

This point was picked up by Bambos, who said: "Because baseline funding has been set from 2013, it takes no account of changes in the population of Enfield to do with age, poverty and

other factors that might hugely affect the funding that Enfield actually deserves right now.

"A future funding formula needs to take account of need. There should not be the current differentiation."

Kennedy confirmed the government was considering how to allocate public health funding "in a more needs-based way" rather than continuing to allocate funding based on NHS historical spend. She said: "We recognise that Enfield's per capita funding breakdown is different from that of other London boroughs, but a per capita basis is not actually a meaningful way of comparing allocations or the best way of determining funding – because it takes no account of different levels of need."

'Climate emergency' declared



Enfield Extinction Rebellion activists outside the civic centre prior to the meeting at which councillors voted to declare a 'climate emergency' Credit: Simon Allin, Local Democracy Reporter

BY JAMES CRACKNELL

Enfield Council will do "all in its power within available financial resources" to reach net zero carbon emissions by 2030, councillors have agreed.

The pledge was made as the council declared a 'climate emergency' after increasing pressure was placed on the local authority to take action by green campaigners.

Other measures included establishing a 'climate emergency task force' to work out ways to achieve the net-zero emissions target, making the council's supply chain carbon neutral, and recommending to the pensions committee that it divest Enfield Pension Fund from fossil fuels.

Prior to a meeting of the full council activists from Enfield Extinction Rebellion held a good-natured demonstration outside the civic centre. Council leader Nesil Caliskan later told council-

lors: "We have been contacted by hundreds of people about declaring a climate emergency.

"This issue requires urgent attention. We are committed to making the council carbon neutral by 2030, if not sooner. We should also commit to reduce our holdings in fossil fuel companies and I am glad the pension committee has begun to look at that. "The scientific evidence on climate change is absolutely undeniable."

After a report setting out the council's commitments on climate change was agreed in a vote, a lengthy debate on the motion to declare a climate emergency took place. There was praise for the council successfully reducing its carbon footprint by 45%, launching programmes such as Cycle Enfield and Sustainable Enfield, and for energy-saving schemes such as installing ground-source heat pumps at eight council tower blocks and erecting solar panels on the civic centre. Yasemin Brett, a Labour council-

lor for Bowes, said: "I would like to thank Enfield Extinction Rebellion for the pressure they have put on the council."

However, there were also calls for the council to go further. James Hockney, a Conservative councillor for Bush Hill Park, claimed the divestment promise was not strong enough. He said: "The report only talks about 'reducing' fossil fuels. It frustrates me – there is no detail on how they will deliver this."

The Conservative group abstained on both the council's climate change report and the climate emergency motion, with opposition group leader Joanne Laban calling the report "weak". Cockfosters ward member Alessandro Georgiou went further by voting against the report, claiming it was "virtue signalling" and that immigration had contributed to UK carbon emissions. A small number of Labour councillors also abstained on the council's report after complaining it was "not carefully worded".

Lighting up

Thousands of street lamps in Enfield will be fitted with LED bulbs.

The project to replace 21,000 lights in the borough will cost Enfield Council £6.4million but is expected to save £382,000 per year in electricity and maintenance costs once fully installed by January 2021.

The new 'smart' street lamps will emit a white light similar to that of daylight – helping people see more clearly. The bulbs have a lifespan of 20 years and will reduce carbon emissions from street lighting by half. Guney Dogan, cabinet member for environment, said: "We're using smart technology to make our street lighting greener and more sensitive to the needs of residents."

A10 cameras

BY SIMON ALLIN, LOCAL DEMOCRACY REPORTER

Average speed cameras must be erected on the A10 to stop dangerous drivers, councillors have said.

Councillors called on Transport for London (TfL) to install fixed speed cameras after a rise in deaths and serious injuries on the road. Police have been targeting speeding drivers on the A10 and recently unveiled a drone to catch people breaking the law. But councillors warned these were temporary measures.

Conservative leader Joanne Laban said: "Racing on the A10 has been causing distress for residents for too long. The police do a brilliant job, but we can't expect them there every weekend. A permanent solution needs to be found."

TfL says it hasn't ruled out putting up average speed cameras.

Police probe

Police questioned senior Labour councillors following complaints that photos were taken of the public gallery during a council meeting.

A full council meeting on Wednesday 10th July was interrupted by shouts of "stop taking photos of me" from a member of the public after Ergin Erbil, the Labour group whip and conduct committee chair, was seen using his phone. After the meeting police questioned both Cllr Erbil and council leader Nesil Caliskan, who had been sat next to him, but no further action was taken. Cllr Erbil did not comment.

Capel Manor College

Your route to a brighter future



Choose from our unique range of full and part-time courses:

- Agriculture
- Animal Management
- Arboriculture
- Environmental Conservation
- Floristry and Balloon Artistry
- Garden Design
- Horticulture and Landscaping
- Saddlery and Shoemaking



Discover more about courses starting this September at our **Post-GCSE Advice Day**

Friday 23 August 2019

capel.ac.uk



Enfield Connections programme manager Angela Greaves (third from left) with 'Community Chest' recipients

Help get smart

Tom Ruxton from local fuel poverty charity HEET on the benefit of smart meters

You've almost certainly heard about smart meters for gas and electricity. You've probably been offered them but may be reluctant to have them fitted. Perhaps you're confused about how smart meters work, or scared because of what you've heard about them.

Thirteen million smart meters have been fitted already and the government wants all old gas and electricity meters to be replaced free of charge to the customer. However, having your meter upgraded is not compulsory. If you are unsure, or have questions, you can get free impartial advice from Home Energy Efficiency Training (HEET) – a fuel poverty charity working in Waltham Forest, Enfield and Redbridge. We provide free advice and practical support to help residents save money on their fuel bills and keep warm.

The purpose of any gas or electricity meter is to measure the amount of fuel you use so that you are charged correctly. Smart meters do exactly the same job but they do it more efficiently. Readings are sent automatically to your energy supplier over a secure network, meaning an end to estimated readings, self-readings and letting a stranger into the house to read the meter. Smart meters are also more versatile so you can switch between pre-payment/credit mode and Economy 7/single rate mode without changing the meter.

So why the bad press about smart meters? The biggest problem is that older smart meters stop sending readings automatically if you switch your energy provider. This is being resolved and all smart meters fitted from April this year onwards will be 'second generation' meters that function properly when you switch provider.

Smart meters have been promoted on the premise that they will save you money. The reality is more complex. Smart meters come with an in-house display which shows you how much gas and electricity you are using. If you use the display to change your habits, by turning appliances off for example, you will save money.

Finally, there have been health and data protection concerns. Public Health England have subjected smart meters to rigorous safety testing and declared that they pose no risk to health. The only information that a smart meter sends to your energy company is a regular meter reading. No personal information, such as your name, address or bank details are stored on the meter.

If you decide you want a smart meter you can simply ask your energy supplier to install one, or alternatively you can do it through the website smartenergygb.org.

Get free advice about smart meters from local charity HEET:

Call 020 8520 1900

Cash awards for local projects

Enfield Connections has donated £15,000 to four different projects

BY ANDREW GURR

Several promising projects aiming to improve the wellbeing of local residents have recently been funded through the Enfield Connections 'Community Chest' scheme.

The grants programme, offered by Enfield Connections in June, gave local charities and voluntary organisations the opportunity to apply for between £1,000 and £5,000 for new and existing projects, with a total funding pool of £15,000. The successful applicants were the Shane Project, One-to-One Enfield, Enfield Saheli and The Wellbeing Co.

The four organisations will now be able to deliver stronger work throughout the community. Enfield Connections programme manager Angela Greaves said "We received great interest in our Community Chest, and it gives me great pleasure to award funding to some truly special projects. I look forward to

seeing how each project unfolds, as well as the difference they make for the wellbeing of Enfield residents."

Shane Project founder Norma McFarlane, whose project will deliver nutrition workshops for people with multiple sclerosis and their families, said she was thrilled to receive the grant. "My aim is to focus on what we do and how we make improvements while staying true to our

"It gives me great pleasure to award funding to some truly special projects"

members," she said.

One-to-One's project will enable delivery of the 'Let's Be In The Know' project, which will help people with learning difficulties discover how they can live happy and healthier lives through different activities. Chief executive Lesley Walls said her aim was to ensure people with learning difficulties or autism are

fully included in the Enfield Community. "We feel happy and excited at being awarded this grant from Enfield Connections," she said.

The Wellbeing Co project coordinator and clinical lead Nichola Lauder said the funding for her organisation would be used to provide an integrated social prescribing service for Enfield residents.

"We are absolutely delighted to receive this funding from Enfield Connections, and ecstatic about the opportunity to roll out a social prescribing service," she said.

"Our aim for the future is simply to work together with the Enfield community and to break-down the taboos, stigma and discrimination surrounding mental health and to continue to create and support healthier communities."

The funding for Enfield Saheli will go towards its projects designed to help women who are isolated or depressed to overcome difficult periods in their lives and take positive steps towards improving their own wellbeing.

Taking good care

The boss of local charity Enfield Carers Centre on what help is available for the borough's carers

BY PAMELA BURKE

The last national census found that there were approximately 30,000 carers living in Enfield.

Carers are people – including children and those who might be frail themselves – who regularly help a relative, partner or close friend because of their disability, frailty or illness.

Approximately 6,500 of these local carers are registered with Enfield Carers Centre (ECC), a local charity based in Baker Street. We provide a host of free support services including information and advice, training and counselling, as well as social and leisure breaks, carers assessments, GP and hospital liaison and advice about income and benefits. ECC provides daytime and evening support groups for all types of carers and five specialist groups covering dementia, mental health, autism, care homes and bereavement. We run free training courses including first aid, manual handling and many other skills.

The charity also operates a safer hospital discharge and carer awareness project at North Middlesex University Hospital, which aims to increase carers' involvement in hospital discharge plans and ensure that carers learn vital, basic nursing skills.

The safer discharge programme is designed for family members and others who will be looking after someone who has just come home from hospital. It helps them become more confident and means the patient is less

likely to be re-admitted, which is better for the patient and for the busy hospitals.

The training programme is free for family carers and covers a range of topics, including how to identify early signs of infection, dehydration or pressure sores and what to do if you find them. It also looks at medication and the best ways to dispense it safely, as well the most common possible side effects and how to deal with them.

Carers can use this opportunity to ask any questions they like. Many of us have never had this level of responsibility for someone else before, so it is important carers feel they have the knowledge and skills they need.

ECC is also a key player in the 'Home from Hospital' scheme funded by Enfield Council and the NHS. This is aimed at people leaving hospital who do not need a high level of ongoing professional care, but do need some help. The help might be ensuring there is food in the house, or picking up prescriptions, and is provided by local company Alpha Care Specialists at all three of our local hospitals.

If you are interested in volunteering or want to find out more about Enfield Carers Centre:

Call 020 8366 3677

Email info@enfieldcarers.org

Visit enfieldcarers.org

For more information on the Home From Hospital scheme:

Call 020 8373 6328



Enfield Carers Centre helps support more than 6,500 local carers

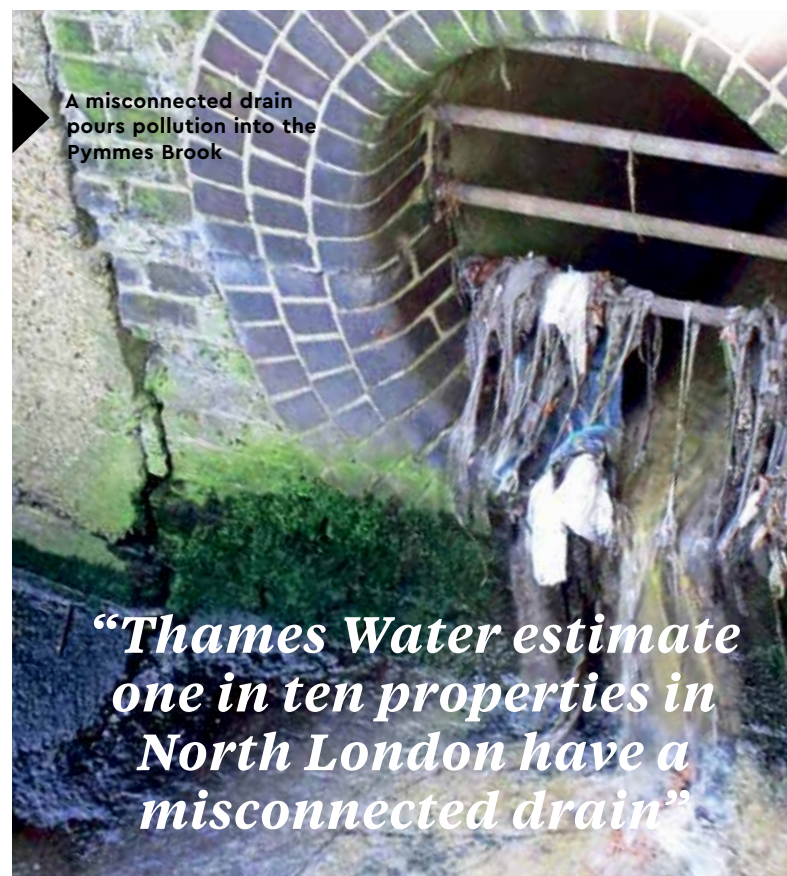
Don't be a drain

Peter Leedham from community group Pymmes Brookers on how we might be causing pollution inadvertently

A recent High Court case has highlighted the damage being done to our local streams by wrongly connected house drains.

An Enfield landlord had connected the waste water from washing machines, sinks and toilets at several properties to the surface-water drains, causing pollution to pour into Pymmes Brook. He was asked to rectify the problem, refused, and was eventually taken to court where he was ordered to comply. He appealed to the High Court, which has now found against him and instructed him to comply. All in all the case took seven years, cost thousands of pounds, and led to years of pollution. Pymmes Brook is the stream which

flows from Jack's Lake in Hadley Wood, through Oak Hill Park, Brunswick Open Space, Arnos Park and Tile Kiln Lane Open Space; areas enjoyed by thousands of Enfield residents as well as supporting a variety of wildlife. It is one of the three streams which drain through Enfield borough, the others being Salmon's Brook and Turkey Brook. They rise in the open country in the north of our borough but for much of their length flow through built-up areas before entering the River Lea. They are all polluted by agricultural run-off, oils and heavy metals from road run-off, plus sewage from misconnected drains. In our part of London we have two separate sewer systems – one for



A misconnected drain pours pollution into the Pymmes Brook

“Thames Water estimate one in ten properties in North London have a misconnected drain”

surface water run-off from roofs and driveways and the other for 'foul' water from sinks, toilets, washing machines and other household appliances. The surface water drains empty straight into our streams

without any treatment, whereas the foul water is carried to the sewage works for treatment. Obviously when our houses were built their drains were connected correctly but since then many changes may have taken

place – for example by moving a washing machine to an outbuilding or installing an en-suite bathroom. Thames Water estimate that across North London one in ten properties have a misconnection. That amounts to a huge volume of sewage flowing into our lakes and streams.

So whose responsibility is all this? As the recent High Court judgement makes clear, it rests squarely with the property owner, even if the connections were made by a builder, plumber or previous occupant. It makes sense for householders to check their drain connections – making sure that nothing but surface water from gutters, patios and driveways is going into the surface water drain gulleys, and that washing machines, dishwashers, downstairs cloakrooms and en-suite bathrooms have been connected correctly. If there is any doubt, information and advice is available online.

For help with misconnected drains:

Visit connectright.org.uk

Visit thames21.org.uk/plumbing-misconnections

To support community group Pymmes Brookers:

Email thepymmesbrookers@gmail.com

Proposal to build on station car parks slammed

Transport for London wants to build 550 homes at Arnos Grove and Cockfosters tube stations



Arnos Grove Station, designed by renowned architect Charles Holden and opened in 1932, is Grade 2*-listed

BY JAMES CRACKNELL

Councillors and community leaders have criticised Transport for London (TfL) after it revealed plans to build hundreds of homes on two tube station car parks. The plans could see 400 homes built at Cockfosters Station and 150 at Arnos Grove Station, both of which are listed buildings. Mayor of London Sadiq Khan wants to build 10,000 homes in total across TfL's land portfolio, with half being designated 'affordable'. But the developments, if approved by Enfield Council, would substantially reduce and potentially eliminate the availability of car parking for commuters at the two Piccadilly Line stations, with the exception of disabled parking spaces. TfL says it wants to encour-

age a shift to sustainable transport by developing "car free" housing schemes.

The station car park at Cockfosters is adjacent to Trent Park. Peter Gibbs, chairman of the Friends of Trent Country Park, has issued a statement highly critical of TfL. He said: "Transport for London's announcement that it wants to plough up Cockfosters Station car park and build 400 flats is a body-blow to travellers and residents.

"Hundreds of commuters dependant on parking to access the Piccadilly Line will be displaced, many on to our local streets. The car park is full every day and unless this project is stopped travellers will have no choice but to park where they can, even in Trent Park. "We are especially concerned for the numerous disadvantaged travellers who need

easy access to the station, and the many shift workers who value the security of having independent transport to hand any time of the day. All this amenity will be lost because there are no proposals from TfL to replace the car parking."

Daniel Anderson, a councillor for Southgate Green ward which includes Arnos Grove Station, told the *Dispatch*: "The infrastructure support for the area is not in place – Arnos Grove Medical Centre has gone from having 1,900 patients to 6,000. Unless you improve public transport, with more local connections, building on the car park will mean the council will have to put in CPZs [controlled parking zones] all over the place. "TfL hasn't thought this through. It is frankly ridiculous. Residents are up in arms."

The homes planned for the stations would be built by developer Grainger and then rented out, rather than sold. Graeme Craig, director of commercial development at TfL, said: "'Build to Rent' is a really exciting programme and we're thrilled at the prospect of working with Grainger to build the homes that our city desperately needs.

"It provides us with an unrivalled opportunity to deliver affordable, high-quality homes at pace, including at Cockfosters and Arnos Grove, while also generating significant ongoing revenue to reinvest into the transport network."

TfL held two public consultation events about its plans in June and is still welcoming comments from local people. No planning applications have yet been submitted.

To have your say on the plans:

Call 020 3890 7318

Email emailingkharris@conciliocomms.com

Visit cockfostersconsultation.com

Visit arnosgroveconsultation.com

Fire safety concerns raised

BY SIMON ALLIN,
LOCAL DEMOCRACY REPORTER

Enfield Council has denied dropping a key pledge to improve fire safety in high-rise buildings.

The council plans to fit sprinkler systems in all of the borough's tower blocks and has called on the government to fund the upgrade work. One of Labour's manifesto pledges in the 2018 local election was to "install sprinklers in all of our 54 high-rise council housing blocks, investing £8million for safety". The promise came shortly after the Grenfell Tower fire which killed 72 people in June 2017.

However, Conservative group leader Joanne Laban claims there has been a U-turn after a housing officer said in an email that the council was considering installing sprinklers "on a risk-case basis". The email says the council is undertaking a "full review of building safety" and has hired a consultant to carry out a feasibility study into fitting sheltered homes with sprinkler systems.

Cllr Laban said: "They have been in power for a year and have not put any sprinkler systems in any tower blocks. They are saying they will

"They have been in power for a year and have not put any sprinkler systems in any tower blocks"

put them in sheltered accommodation, but they are doing a feasibility study on whether they are needed in tower blocks.

"It is a big u-turn on what they promised, considering they were saying 'we will put them in every tower block'."

Grenfell Tower was not fitted with sprinkler systems, which some experts say could have saved lives by stopping the fire from spreading rapidly.

A council spokesperson said: "There has been no U-turn on the council's intention to retrofit sprinklers in all our tower blocks, which full council agreed 'should be funded by government' in a motion passed in November 2017.

"Despite central government's failure to provide this funding, Enfield Council continues to deliver on this commitment as our residents' safety remains our number one priority."

The council has already fitted several vulnerable people's homes with portable sprinklers. Work to fit sprinkler systems in sheltered housing blocks is also underway, with one block – Brittany House – due to have them installed later this year. Feasibility studies are being undertaken for a further nine sites.

Award for community organiser



A parent who set up a community patrol scheme in Enfield to help combat crime against schoolchildren has picked up a British Citizens Award.

Emma Rigby, who is also the founder of business networking organisation Love Your Doorstep, decided to act when her son told her he didn't feel safe travelling to and from school. The patrol launched in March and has helped prevent muggings thanks to the presence of volunteer patrol wardens. The scheme is backed by local police.

After being presented with her award at a ceremony in Westminster last month, Emma said: "I'm hugely honoured and proud to have been awarded the medal."

Emma Rigby with her British Citizen Award medal

Colossal homes plan

BY JAMES CRACKNELL

The tallest housing development in Enfield is proposed to be built on the site of a B&Q. Plans for Colosseum Retail Park in Great Cambridge Road are being drawn up ahead of a planning application due to be submitted by the end of the year – and is set to include a 29-storey tower that would become the borough's tallest.

American investment firm BlackRock, which owns the site opposite Cineworld on the corner of Southbury Road, has teamed up with London developer NEAT to propose building up to 1,800 new homes – with 27% 'affordable' – in place of the existing retail park. Existing large retailers including B&Q, Dunelm and Gala Bingo would all be cleared to make for the scheme when their leases expire between 2022 and 2026. The scheme, if approved, would be built over the next 15-20 years and

as well as homes include small shops and restaurants, a doctor's surgery, crèche, business centre, 1.5 hectares of open space and a cycle hub. The residential tower blocks would be 29, 24, 18 and 16 storeys tall.

In its draft Local Plan published last year, Enfield Council mentioned the possibility of new housing developments being built along Great Cambridge Road, noting that large out-of-town shops can harm the viability of local high streets and that there were "significant opportunities to look at comprehensive intensification of retail parks such as Colosseum Retail Park and Enfield Retail Park" with a chance to build in their place "efficiently and holistically-designed new communities, without the need for complicated land assembly".

In its brochure promoting the plans for Colosseum Retail Park, BlackRock and NEAT state: "The blocks and large car parks formed by the retail parks have always acted as a

divide between Enfield Town and Ponders End, with little interaction or crossover between the two areas.

"As shopping patterns change, retail parks are becoming under-used and space is used inefficiently. At the same time, with a growing need for housing across London, local authorities are required to think creatively."

Concerns have been raised by Enfield Society and Enfield Transport Users Group that should multiple retail parks be developed, significant investment would be needed in public transport, particularly at nearby Southbury Station – currently served by two trains per hour.

There have also been calls for a masterplan to be drawn up for the area, similar to the one for Meridian Water. Enfield Transport Users Group chair Phil Ridley said: "We need to ensure we get a well-designed place where all the various sites that will rapidly come forward relate to each other in a comprehensive masterplan, rather than piecemeal development.

"This is necessary to create a sense of place, integrated transport provision and to ensure the development has legible shopping and open space areas that add to rather than detract from Ponders End shopping centre. There also needs to be long-term thinking about services such as schools and medical facilities.

"Unfortunately, while Enfield has a comprehensive masterplan for Meridian Water, there is no real planning framework for this area." Enfield Council declined to comment.



An impression of how the Colosseum Retail Park development might look

One of the Beryl bike bays in Enfield



Bike hire scheme

Bikes are now available to hire in Enfield after urban cycling firm Beryl launched its "innovative" scheme in the borough. Beryl has only previously operated its bike hire scheme in Bournemouth and Hereford but has been in discussions with Enfield Council for the last few months about launching in its first London borough.

The company's distinctive emerald green bikes can be hired via smartphone apps allowing users to find and unlock them. There are now 50 Beryl cycle bays located across Enfield, although the bikes can also be left elsewhere for an extra charge. Hire costs are 5p per minute.

A previous bike hire scheme in Enfield run by Urbo was not extended beyond an initial trial in early 2018, but Beryl's co-founder and chief executive Phil Ellis says his company is here to stay. He told the *Dispatch*: "We have a good relationship with the local author-

ity – they have a really good vision and are particularly serious about improving cycling infrastructure.

"If you get the right infrastructure it can change people's lives from both an environmental and health perspective. The council wants to encourage more people to cycle and naturally we want to have more customers. This is not a trial – we are going to be here for years."

The council's deputy leader Ian Barnes added: "The aim is to encourage people to leave their car at home. There is an obesity problem in Enfield and we want to get more people cycling – Beryl is a piece of the puzzle to help us do that."

The scheme got off to a bad start, however, with one Beryl bike found on top of a bus shelter in Edmonton during its first weekend.

Find out more about Beryl and download the app:

Visit beryl.cc/bikeshare/riders

Cycle lanes could delay buses, TfL warn

Benefits of Hertford Road scheme questioned

BY JAMES CRACKNELL

The next major scheme being built as part of the Cycle Enfield programme could make bus journey times longer, Transport for London (TfL) has warned.

An impact assessment report written by TfL and made public through Freedom of Information laws shows that most bus services along the northern section of Hertford Road could be delayed by up to five minutes once new cycle lanes have been installed.

Work is due to start later this year

on constructing 1.5 miles of segregated cycle lanes along Hertford Road, between Nags Head Road in Ponders End and Mollison Avenue in Bullsmoor. The scheme also involves installing additional traffic signals; bus stop 'boarders' and bypasses for cyclists; new zebra crossings; and remodelled junctions.

The TfL assessment concluded that more than half of bus services using the route could incur extra delays, with the southbound 121 bus in the evening rush hour, likely to be delayed by between three and five minutes, being worst affected. While

some services might be faster, the difference would be no more than two minutes.

An assessment of air pollution impacts from the scheme failed to draw a firm conclusion, with TfL stating that benefits would only arise if traffic congestion was reduced by more people deciding to cycle. Doubt was also cast on the potential for benefits to pedestrians.

TfL's conclusion stated: "Overall the scheme will benefit existing cyclists, and providing a continuous, safe facility should help attract more people to choose to cycle which could

lower the number of car journeys.

"However, the majority of pedestrians, car users and bus passengers will experience a delay to their journey if they are travelling through one of the three signalised junctions along the route. If they travel through multiple of these junctions the impact is compounded."

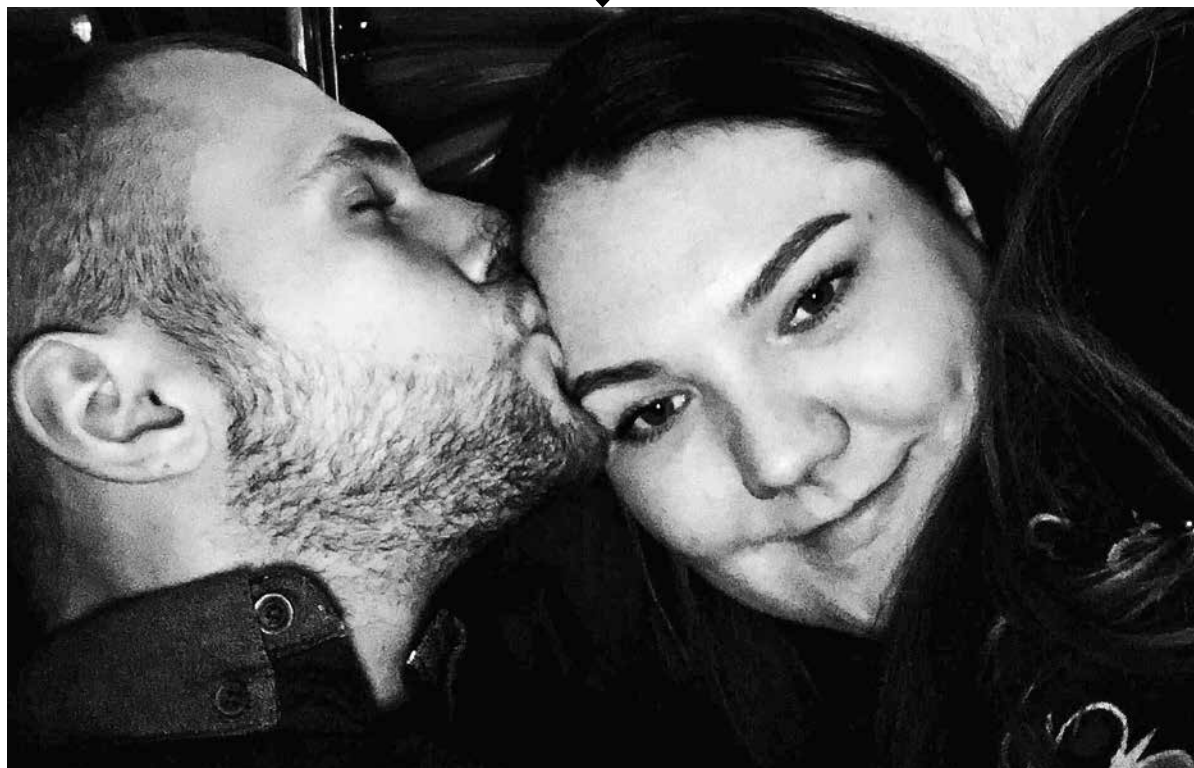
The A1010 North project is the third major scheme being built as part of Enfield Council's £42m 'Mini Holland' cycling programme, with the southern route through Edmonton nearing completion and the A105 scheme through Palmers Green and

Winchmore Hill opening last year.

A council spokesperson said: "The impact assessments are based on worst-case scenarios and assumes no increase of active travel. However, our data demonstrates a 52% increase in cycling along Green Lanes and we expect people to choose more active forms of travel along A1010 North once the scheme is implemented.

"While improvement works are starting at Nags Head junction, a decision has yet to be made on the wider scheme. A decision is expected later in summer."

Paige and Tom Ballmi got married in December last year, four months after Tom was allowed back into the UK



Paying the price of love

Enfield resident Paige Ballmi on why she is campaigning to change the government's spouse visa laws

In December 2017 I was stood on a bridge over the A10 attempting to end my life.

Two days previous to this I had received the devastating news from the Home Office that my now husband's fiancé visa had been refused. The refusal stated that my earnings were not enough for us to live together in our home in Enfield, despite me earning over the required amount.

Although the decision to refuse my husband was incorrect, I soon learned that this was something that could not be fixed immediately—it took eleven months to put it right via a court appeal. At the time,

I was completely oblivious to how common poor decision-making and maladministration at the Home Office had become.

Despite many efforts to communicate their errors to them, the Home Office refused to listen and take me seriously, knowing that I was a vulnerable young woman who just wanted my right to a family life. I was essentially punished for falling in love with a foreigner.

Not many are aware that the UK government's family migration rules demand that a British partner of a non-EU citizen must earn a minimum of £18,600 per annum to be able to

live as a family – far higher than the minimum wage. This policy implemented in 2012 has become known as the 'price on love' and was part of then Home Secretary Theresa May's plan to create a 'hostile environment' for immigrants.

Many cross-border families, like my own, fell victim to this policy. A report in 2015 by The Children's Commissioner's Officer revealed that more than 15,000 innocent children were affected, growing up in 'Skype families' as well as families living in exile

stood on a bridge over the A10. That's when I came across a campaign group called Reunite Families UK, which is passionate about bringing forward a more humane and fair family immigration policy. I now dedicate my time to campaigning for those families, as well as my own.

My husband is now back in the UK, but the damage has been so detrimental that I am undergoing treatment for post-traumatic stress disorder. The 'price on love' policy is still hanging over our heads and I am so frightened of any change of circumstances that might affect future applications.

Going to university, changing career or starting a family, which I so desperately want to do, is not an option right now – because of the fear that myself and my husband will be ripped apart again.

Knowing I am not the only person in this position gives me the drive to demand change.

For more information about Reunite Families UK:

Visit reunitefamiliesuk.co.uk

Ask your MP to scrap the minimum income requirement for spouse visas:

Visit jcwi.org.uk/take-action-to-bring-families-together

"I was essentially punished for falling in love with a foreigner"

because rules prevent their return to the UK.

The policy was meant to "prevent migrants becoming a burden on the taxpayer" despite non-EU migrants having no access to public funds. My husband is an extremely hard worker, and along with many other non-EU migrants here as a spouse, he pays tax and National Insurance contributions alongside an immigration health surcharge of £1,000 per application which has to be renewed every two-and-a-half years.

During our year of hell, I became determined to prevent anyone else feeling the way I did that day when I

Life on the hill

In our latest councillor's column, Maria Alexandrou looks at the issues facing Winchmore Hill

It is an honour to represent Winchmore Hill ward, a suburban area with a picturesque village green at its centre, surrounded by shops and cafés. The historic buildings give the area its charm. Local green spaces such as Hazelwood Sports Club, Woodcroft Wildspace and Grovelands Park – with its stunning lake – help make Enfield one of London's greenest boroughs.

Unfortunately, the borough's Green Belt is under threat because Labour-run Enfield Council wants to propose building on Crews Hill. This conflicts with the London Plan, which is firmly against Green Belt development. The Conservatives are also against these proposals, because they would change the landscape of Enfield forever. Currently, 37% of Enfield is protected Green Belt.

Enfield has the highest rate of serious youth violence in London, according to recent Metropolitan Police figures. Labour is in denial about this, blaming everyone but themselves. They ignore the fact that Mayor of London Sadiq Khan is forcing many police front desks to close, while the council

has badly let down young people by its inability to secure funding from a pot of £15million aimed at youth projects to help curb youth violence. They have proved yet again how ineffective they are – I think Enfield residents deserve better.

Enfield has experienced rising car crime and I am working closely with the local police, visiting car dealers about safety features and informing residents about safety

awareness. Cycle lanes can also be made safer by adding painted direction arrows on them and reflector lights.

Being a member of both the planning committee and licensing committee enables me to help shape Enfield's future. I am also on the music hub committee, which promotes music in schools. The benefits of embracing music are immeasurable and I have visited Enfield schools to give presentations about inspirational people.

Finally, Enfield Southgate Conservative Association is opposing the Boundary Commission proposals which want to cut up the borough wards that tie our communities together – I recommend emailing your views on this to reviews@lgbce.org.uk.

Cllr Maria Alexandrou (Conservative) represents Winchmore Hill along with Ian Barnes (Labour) and Dinah Barry (Labour). Surgeries are held by appointment Monday-Thursday at Sir Anthony Berry House, 1 Chaseville Parade, Chaseville Park Road, Winchmore Hill N21 1PG

Call 07971 672 867

Email cldr.maria.alexandrou@enfield.gov.uk

Cllr Maria Alexandrou was elected in 2018



We need better homes

Petition launched against 'permitted development' schemes

BY AL SIMS

Since 2013 property developers have been able to use something called 'permitted development rights' to convert offices into flats – without obtaining planning permission.

The idea was well-intentioned, because it meant vacant offices could be turned into much-needed homes. Unfortunately, however, it's had some pretty awful unintended consequences.

Firstly, it has led to some appalling housing. Many of the flats created are tiny (some studio flats are about the size as a parking space) and the buildings are overcrowded. The flats can be poorly ventilated, do not need external windows or any outside space, and do not even need to meet environmental standards. Developers get away with all this

because they don't need to obtain planning permission.

Secondly, permitted development rules have creates a loophole which means developers can avoid making contributions towards affordable homes and community payments. It's hard to know exactly, but we estimate that Enfield borough has lost 200 affordable homes and at least £1.2million in community investment – money and homes we desperately need. The shortfall will be paid by us, Enfield's residents, but we think these developers should pay their fair share. Finally, many of the offices converted are occupied, so businesses are forced out to make way for them. Many of our borough's offices are being converted, meaning business have to relocate further afield and reducing local employment.

Thankfully, there's an easy solu-

tion to all this. Most London councils have used a directive called 'Article 4' to protect their boroughs from permitted development. Homes can still be built, but developers cannot avoid paying their fair share and the homes must be of much better quality. Enfield Council, unfortunately, hasn't yet done this and has refused to act quickly. We think this is unacceptable. The longer this continues, the more poor-quality homes will be created, with Enfield residents picking up the bill.

By signing our petition, you'll be helping to reduce misery, increase affordable housing, save jobs, improve the borough's finances and help the environment.

Sign the Better Homes For Enfield petition:

Visit bit.ly/BetterEnfield

Advertisement

CANCER KNOW^{the} Symptoms

spot it early

There are key signs to look out for:

- **BLOOD** - Unexplained blood that doesn't come from an obvious injury
- **LUMP** - An unexplained lump
- **WEIGHT LOSS** - Unexplained weight loss, which feels significant to you
- **COUGH** - A cough that doesn't go away after 3 weeks

If in doubt – check it out!

Finding cancer early makes it more treatable. Chances are it's nothing serious, but if you notice any of these signs, tell your doctor

CANCER - Let's beat it together!

www.enfield.gov.uk/HealthyEnfield

In partnership with

NHS
Enfield
Clinical Commissioning Group

ENFIELD
Council



LETTERS

Send us your letters

Got an opinion on something in Enfield? We accept letters of up to 200 words from people and organisations in the borough. Email EnfieldDispatch@socialspider.com before the next deadline on Tuesday 20th August.

Thanks for donations

Dear Enfield Dispatch

The Livia Memorial Garden was opened 20 years ago in October and as a small endeavour on behalf of Enfield's community, it has fared fairly well, the few incidents of unpleasantness vastly overshadowed by the kindnesses and curiosity of visitors, including of birds, bees, butterflies and other friendly wildlife that has returned to enhance what was in 1998 a derelict and barren spot next to Enfield Chase Station.

We'd like to thank the people who have contributed for many years with regular donations to help us maintain the garden and, also, Waitrose in Windmill Hill, whose staff have been opening and shutting the garden gates from May to October for some time. This year manager Amanda Hobbs made a bid and won a stupendous and unexpected £1,000 from Waitrose HQ for the facelift the garden needs – work which staff also plan to help with!

Livia was our 16-year-old daughter who was killed by a driver who mounted the pavement as she walked to ballet at Bodens School of Dance and Drama on 12th January 1998. We now live in Rugby but visit Enfield weekly and have been active road safety campaigners since 1999 through the Livia Memorial Fund that supports six projects, of which the garden is one.

Our heartfelt thanks to all supporters for their empathy and generosity.

George and Giulietta
Galli-Atkinson
Rugby, Warwickshire

Keep weekly bin rounds

Dear Enfield Dispatch

Enfield Council plans to stop weekly bin collections and charge residents £65 per year for green bin collections. It remains my view all councils in London need to have a weekly waste collection – a simple standard service collecting general waste, recyclable waste, garden waste and food waste. In the next few years London will have ten million residents; all councils in London must plan waste services to stop fly-tipping.

John Sturman
Ponders End

Still welcome?

Dear Enfield Dispatch

A recent study of shops in Winchmore Hill revealed that a number of premises were vacant, highlighting a downturn in the local economy. Many factors are involved, from online shopping to the overrun of work to install cycle lanes and reductions in parking and crossing points on Green Lanes.

However, one additional issue was the removal of signs welcoming people to Winchmore Hill. These stood at the junctions of Compton Road, Station Road and Vicars Moor Lane. Welcome signs like this still exist in Palmers Green and Enfield Town so it is hard to fathom why Winchmore Hill should have its removed. I wrote to Enfield Council about this issue and they replied: "They are in storage and we have no room to put them back in place."

I think the fact they found room to put a map at the bottom of Compton Road shows they have different priorities. I wonder if anyone else has noticed the disappearance of the signs and whether they consider it detrimental to the area?

Neil Littman
Winchmore Hill

Brutal towers

Dear Enfield Dispatch

My son moved to Leeds because London house prices made the city too expensive. Local housing is needed; the question is what kind of development Southgate should get. The answer is low-to-medium-rise structures that fit the locale's identity. Most people would prefer ten four-storey buildings to eleven two-storey buildings plus one 18-storey skyscraper, yet Sadiq Khan calls for brutalism. Why? The London mayor wants a cheap victory.

As for Enfield Council, I'm disgusted by its betrayal of local interests. It started at Meridian Water, where leader Nes Caliskan has caved to demands that Enfield be lumbered with London's low-value dirty industries. The result has been a drastic reduction in housing numbers there. Having gone off track, the council now has to build more homes elsewhere – with skyscrapers in Southgate, Arncliffe and Cockfosters.

In 2001, the council razed several ugly high-rises in Edmonton Green. It was right. Now we face renewed vandalism.

Alan Sitkin
Southgate

What we've achieved this year

Claire Fisher from Healthwatch Enfield on how local people helped make a difference in 2018/19



Each month we bring you news of changes, improvements and campaigns in local health and social care services.

Over the past year we have reached thousands of residents at community events and hundreds more gave up their time to participate in workshops, give us feedback online and complete surveys. We have been looking back at the improvements you have helped us achieve over the past financial year as we release our 2018/19 annual report. We've heard from a greater number of people than ever before, which has contributed to even greater success in bringing improvements to local health and care services in Enfield.

We also had more than 1,000 local residents tell us about their experiences of booking a GP appointment. This is the biggest piece of research we have completed in the borough and one of the largest samples collected nationally, as far as appetite for digital technology in primary care is concerned.

This valuable investment from residents alongside our work with local health leaders and Enfield Council has enabled us to get mental health on the agenda for the council's health and wellbeing strategy. We have partnered with local patients, their family and carers, and North Middlesex University Hospital NHS Trust, to co-design a new patient experience strategy and secure improvements to services. We aim to get 83% of our recommendations for improvements implemented across four care and nursing homes we inspected. We have uncovered challenges around dental provision for

those in care too frail to attend external appointments and we have ensured residents' feedback is considered in upcoming changes to planned bone and joint operations.

Patricia Mecinska, chief executive of Healthwatch Enfield, said: "By sharing their views with us, local residents have shown us what matters to them most when it comes to health and social care services in Enfield. By working together with residents and leaders who have the power to make change happen we have found solutions that involve local people in designing and delivering new services.

"This is the reason we exist, there's more work to be done but in reflecting on the past 12 months, we are proud to already be making a difference to improve health and social care in Enfield."

These are just a few of our highlights, you can download the full Healthwatch Enfield report for 2018/19 from our website or obtain a printed copy via calling us.

healthwatch
Enfield

For more information about Healthwatch Enfield and to get in touch:

Call 020 8373 6283

Email info@healthwatchenfield.co.uk

Tweet @HealthwatchEnf

Visit healthwatchenfield.co.uk

Smoking blamed for high cancer rates

Enfield Council has launched a cancer awareness campaign, reports Zac Ntim

Cancer is the biggest killer in Enfield and residents living in the borough's poorest areas are more likely to die after diagnosis, a new study has found. Cancer deaths are 22% more likely to occur in the most deprived areas compared with the most affluent parts of Enfield borough.

Patricia Mecinska, chief executive of Healthwatch Enfield, believes this is because of a lack of awareness. She told the *Dispatch*: "Based on evidence from our outreach activities with local communities we know that those from disadvantaged or low-income backgrounds are less aware of a range of health issues and are more likely to present with a more advanced-stage cancer leading to poorer outcomes.

"We also need to remember about Enfield's diverse commu-

nities, who may not be accessing prevention messages through standard channels."

Cancer awareness across the borough is low, with only 30% of residents able to identify a single symptom. In response, Enfield Council last month launched a year-long campaign to provide residents with advice on how to spot

"Those from disadvantaged or low-income backgrounds are less aware of a range of health issues"

symptoms, as well as lifestyle changes that can be made to reduce the chance of developing the disease.

Mahtab Uddin, cabinet member for public health, said: "In many cases cancer has become a treatable disease. Delivering improvements in early diagnosis of cancer by raising awareness of its symptoms is our main aim. We will also focus on

the importance of prevention by promoting healthier lifestyles and encouraging people to participate in national screening programmes.

"But the single biggest impact anyone can make to reduce the risk of developing cancer is to quit smoking."

A study published by the council's health and wellbeing board found that adult smoking is higher in Enfield than neighbouring boroughs and across England. Smoking is one of the biggest causes of death and illness in the UK—every year around 78,000 people die from smoking-related illness.

In May, as part of a joint commission between all London boroughs, a new online portal called 'London Stop Smoking' was launched to provide advice and education to Londoners aiming to stop smoking. All smokers living, working or study-



ing in Enfield can now contact the free service, which is accessible both online and by phone.

The council's year-long cancer awareness project is a joint venture with Enfield Clinical Commissioning Group and will primarily aim

to promote ways to prevent breast, lung, bowel and cervical cancers.

To learn more about spotting the signs of cancer:

Visit nhs.uk/conditions/cancer

Visit cancerresearchuk.org/about-cancer

**EXPERIENCED
METAL WORKER
& ELECTROPLATER
REQUIRED**

**NORTH LONDON BUSINESS
EASY ACCESS AND TRANSPORT**

TOP RATES PAID

**PLEASE CALL DAVID OR JOHN ON
020 8807 9112**



**AW Electrical Supplies are North
London's AWESome Independent
Electrical Wholesaler open to both
trade and public alike.**

**Family run with AWESome service,
AWESome stock and most importantly
AWESome prices.**

Open from 6.30am Monday-Friday and 8am Saturday

Call us on: 020 8344 9764

Visit our Website:

www.aw-electrical-supplies.co.uk



**Malone & Co. is a cafe that serves up
homemade meals, cakes and great coffee.
We are fully licensed and offer a range
of cocktails, beers & wines. We have a
monthly supper club on the last Saturday
of the month and the cafe is available to
hire for corporate and private functions.**

**Visit: www.maloneandcocafe.com
Tel: 020 8364 5690**

ADVERTISE WITH ENFIELD DISPATCH

To advertise in Enfield Dispatch for just £90 all you have to do is send us your logo, up to 50 words of text describing your business, and any contact details you want included. Please send us your logo as the original image file, not a small web version.

Contact our advertising salesperson Klaudia:

Call 020 8521 7956 Email klaudia@socialspider.com

Enfield Children's Portal



**The new way to
access children
and family
services for public
and professionals**

- Make referrals**
- Enquire about being
a foster carer**
- Access all the information, advice
and guidance you need about
services available to you**

www.enfield.gov.uk/childrensportal



**North Middlesex University Hospital
NHS Trust**

Patients, people, partners, progress

**Join us for our annual general meeting (AGM)
11am, Thursday 5 September 2019
Education Centre
North Middlesex University Hospital
Sterling Way, London N18 1QX**

Please tell us if you have any accessibility needs so we can ensure we meet them. Call 020 8887 3329 or email northmid.companysecretary@nhs.net



School of rock

Schoolchildren perform popular anthems on stage for first time

More than 100 schoolchildren treated their friends and family to a rock concert in Edmonton – made possible by national music charity Youth Music.

Local children were given the chance to be part of a rock band during their school day by Edmonton Community Partnership, which worked with Youth Music to fund lessons from Rocksteady Music School.

The children from eight different schools across Edmonton spent five months learning to play songs such as *Blinded by Your Grace* by Stormzy, *Shotgun* by George Ezra, and *Sweet Child of Mine* by Guns 'n' Roses.

The project set out to raise children's aspirations in Edmonton and teach children teamwork through music, while boosting wellbeing and confidence. The schools involved were Raynham Primary, Eldon Primary, Aylward Academy, West Lea Swan Campus,

Churchfield Primary, Starksfield Primary, Wilbury Primary and St Edmunds Primary.

Ben Millier, head of impact at Rocksteady Music School, said: "It was an honour to watch the children achieve beyond their expectations, they really rocked it. Playing in a band is an amazing experience for children, and we were thrilled to

musicians with a focus on empowering all children to play music they love in real bands, even if they've never touched an instrument before.

Clare-Louise Mussell, partnership manager from Edmonton Community Partnership, said: "Some of these children had absolutely no confidence at the beginning of the project and had never stepped on stage before. To see them work together as a team and perform in front of a large audience at Millfield Theatre was absolutely amazing.

"Projects such as this are crucial to raising children's aspirations, supporting new skills and showing

them just what they can achieve and what a brilliant afternoon it was!"

Yousouf Dauhoo, assistant head at West Lea School, added: "Our young artists really enjoyed the moment and made us proud. They had the time of their life, overcoming anxiety barriers to stand on stage and perform in front of the live audience."

"They had the time of their life, overcoming anxiety barriers to perform on stage"

work with Youth Music and the Edmonton Community Partnership to teach such an inspiring group of young people.

"The confidence boost will stay with the children for years to come – that is what is so special about playing music in a group."

Pupils at Rocksteady Music School are taught by professional gigging



Pupils from Churchfield Primary School were among more than 100 who rocked out on stage at Millfield Theatre Credit Roy Ikoroha

Exploring existence

Patrick Samuel from Palmers Green, also known as the 'Asperger Artist', is releasing an insightful new album



The cover image for Patrick Samuel's new album 'Distant Star' Credit Uwe Nietzold

As an exhibiting artist with attention deficit and hyperactivity disorder (ADHD) and autism, I also have synesthesia, a condition in which one sense is simultaneously perceived as another.

For me, it's colour and sound; when I hear music, I experience colour bursts and see patterns, and vice versa. That's why, apart from painting, music has always been my other outlet, and while on a train home from Folkestone in late December last year I had an idea for both an exhibition and an album that would combine two of my other interests; magic and the cosmos.

My autistic brain travelled the Milky Way and beyond as I tried to connect with my late father who'd been gone for more than six years. In a short space of time, I wrote and produced 19 demo tracks that would form the backbone of my album *Distant Star*. I was a little beyond my comfort zone because this is the first time I have committed my voice to record. The album was recorded with me playing eight instruments in total and singing on all 13 tracks.

I've also never been more honest with myself about the things I've struggled with; love, loneliness, trauma and existentialism are all explored here. The songs are stories about my experiences; it's another way of offering insight into an autistic mind.

Initially, my idea was to self-release *Distant Star*, like I did with my previous album *Beyond The Spectrum*, an instrumental electronic album released in 2017. Luckily, I was signed by Tiergarten Records, a label set up by fellow autistic musician and friend Robin Jax to support neuro-divergent creatives in the music industry such as myself.

So what kind of music is it? For lack of a better word, I say: "Neurodiverse. Expect the unexpected!"

The album will be available from Friday 16th August and one week later I'll be launching a new exhibition to coincide with the release. It will take place at Starfish & Coffee in Alderman's Hill, Palmers Green, and is titled *Distant Star – Waveforms*. The exhibition will be a visual companion to the album, with lyrics from the songs used to create waveform landscapes that probably tell more about my music than I could with words.

Find out more about Patrick's new album and art exhibition:

Visit patricksamuel.net

Singing the blues

David Thomas from St Harmonica's Blues Club looks ahead to this year's 'Broomfield Blues' series of Sunday concerts

While it may be one of the greenest spaces in Palmers Green, for four Sunday afternoons in August the bandstand in Broomfield Park sure will have the blues!

The 'Broomfield Blues' series is in its sixth year and brings you the best in local, national and international blues music. St Harmonica's Blues Club, now in its tenth year and located at prestigious venue The Southgate Club, has been nominated for best blues venue in the UK Blues Forum's annual awards. Together with the Friends of Broomfield Park they will showcase the best of what can be seen at the club at Broomfield Park's bandstand in August, starting at 1.30pm each Sunday.

There will be a different theme each week and we will kick off on Sunday 4th August with 'Women Sing the Blues' featuring Debbie Bond from Alabama who has a history steeped in the blues and who has played with some of the finest artists in America. Professor Redhair Band and That Blue Patch complete the first day's line up.

The following weeks will see acts that are just as talented; 'Harmonica Blues' is the theme on Sunday 11th August with Doc K's Blues Band and The Customtones; 'Acoustic Blues' with The Mark Harrison Band and the remarkable Anglo/American duo of Ben Tyzack and Guy Tortora appear on Sunday 18th August; while over the bank holiday weekend

on Sunday 25th August, The Low Down Dogs and the absolutely magnificent Blues Chapter bring the series to a close with 'The Old and the New'.

There is a terrific bar with food available at each event along with a Friends of Broomfield Park stall offering local goods for sale. There really isn't a better way to spend a summer's Sunday afternoon and even the weather won't beat us because, if it absolutely pours, we will relocate for the afternoon to the home of St Harmonica's, The Southgate Club.

Each afternoon is preceded at 1.30pm with an open mic session for an hour. Just as at St Harmonica's Blues Club, admission is free and, if you like what you hear, all we ask is that you acknowledge that by contributing to the collection hat.

For more information about Broomfield Blues and to register for a slot at one of the open mic sessions:

Email team@stharmonicas.co.uk

Eight-year-old Tahani Shegow, who compered the show Ivy's Got Talent at the Dugdale Centre

BY NATASHA BOYDELL



Talent on show

Six primary schools took part in a show at the Dugdale Centre to celebrate talent and diversity. Acts at 'Ivy's Got Talent' ranged from singing, cajon drumming and playing musical instruments to Indian dancing, gymnastics and performance art. The children performed to a packed-out theatre of proud parents from all six schools; Lavender, Churchfield, Brimsdown, Eastfield, Larkspur and Walker primary schools.

Mum Selda Agca, whose son Yusuf goes to Eastfield, said: "Seeing my son perform with such confidence not only shocked us but simultaneously filled us with pride. An emotional moment for us all!"

The show was the first of its kind but it's hoped that Ivy's Got Talent will become a regular event. Deborah Thompson, chair of the Ivy Learning Trust which organised it, said: "Watching the children perform was a really proud moment for us all, they absolutely blew us away with their passion, ability and dedication and it's hard to believe that they're only primary school age."

The compère for the evening was eight-year-old Tahani Shegow from Churchfield Primary School, who introduced each act. She said: "Never be afraid to show your abilities to the world. It was so exciting to be a part of the event and everyone had a great time."

LISTINGS

Submit your listing

We can include low-cost community events taking place in Enfield. For next month's listings, email the details of your event to enfielddispatch@socialspider.com by Tuesday 20th August.

WORKSHOP

Make a Bag

Saturday 3rd August, 2.30pm-4pm
Stitch! 397 Green Lanes,
Palmers Green N13 4JG

Community enterprise Stitch! is hosting various children's activities in August, including this opportunity to make your own bag out of fabric scraps!

£20 entry

Email hello@stitch.org.uk

FOOD

Free Community Meal

Sunday 4th August, 4pm
Raynham Primary School, Raynham
Avenue, Edmonton N18 2JQ

This event is about bringing people together to meet, connect with neighbours in the community and hopefully make new friends.

Free entry

Email miketonia2001@yahoo.co.uk

THEATRE

Dot Productions presents 'Sense and Sensibility'

Saturday 17th August, 6pm
Myddelton House Gardens,
Bull's Cross, Enfield EN2 9HG

Jane Austen's novel is the story of heroes, heartbreak and debonair villains.

£12 tickets

Call 0333 666 3366

Visit ticketsource.co.uk/whats-on/enfield/myddelton-house-gardens

Heartbreak Productions presents 'Gangsta Granny'

Thursday 29th August, 5pm
Forty Hall, Enfield EN2 9HA

Saturday 31st August, 5pm
Broomfield Park, Alderman's Hill,
Palmers Green N13 4RB

Heartbreak Productions invites you to share in this exciting escapade, a David Walliams best-seller adapted for the outdoor stage. Join us, Ben, and his 'Gangsta Granny' on their grandest adventure, full of forbidden fun.

Adults £14, Concessions £10

Visit enfieldfestivals.co.uk/whats-on/gangsta-granny

MUSIC

Organ Recital

Thursday 8th August, 1pm
All Saints' Church, Church Street,
Edmonton N9 9AT

The recital is by Roger Bluff, who for many years was director of music at Bancroft's School in Woodford Green. There will also be a performance by his son, James, on trombone.

Free entry

Email nboreham@yahoo.co.uk

CHARITY

Ponders End Food Hub

Tuesday 20th August, 11am-1pm
Ponders End URC, College Court,
Enfield EN3 4EY

Gospel Temple Apostolic Church is redistributing surplus food to those who are at risk of hunger in the local community, as part of the church's community project Ponders End Food Hub.

Free entry

Visit gospeltemple.org.uk

TALK

Enfield Entertains

Wednesday 28th August, 2.30pm
Jubilee Hall, 2 Parsonage Lane,
Enfield EN2 0AJ

Talk by Joe Studman, looking at more than 30 theatres and cinemas that once graced the borough.

£3 entry

Visit enfieldsociety.org.uk/event/enfield-entertains

CHOIR

MumSing, The Choir for Mums

Mondays starting 9th September,
10am-11.30am
St. Stephen's Church, Park Avenue,
Enfield EN1 2BA

Join our child-friendly choir for mums and enjoy learning and performing great songs every Monday morning.

Free taster session, then £15

Visit vocallysound.co.uk/mumsing.html

AROUND THE BOROUGH

SOUTHGATE

Residents' fears over tower plans

An impression of how the development would look, viewed from the Piccadilly Line



BY SIMON ALLIN,
LOCAL DEMOCRACY REPORTER

TOWER BLOCKS PLANNED FOR close to Southgate Station are “too high” and could lead to more traffic congestion, residents have warned. Two-thirds of people who attended a recent community event opposed the plans to build 200 homes in three blocks of flats up to 17 storeys high, at the

current site of Southgate Office Village. Most people wanted the development to be scaled back to between six and eight storeys and to be in keeping with Southgate’s “distinctive village feel”. The planned development in Chase Road lies adjacent to a conservation area that includes the Grade 2*-listed tube station.

Just one in ten people who responded to a survey backed the current scheme – although the majority were in favour of some form of development. Their main concerns were the towers being too high, the impact on traffic and parking, and stretched local services.

Developer Viewpoint Estates says it held a well-attended public consultation event in February and has changed its scheme in response to the feedback. A planning application was submitted in May.

Southgate District Civic Trust is opposing the plans and claims

community engagement by the developer has not been “as meaningful as it could have been”. National charity Civic Voice has been assisting the residents’ group to raise awareness of the scheme locally.

Ian Harvey, from Civic Voice, said: “The local community, in general, supports the need for redevelopment at Southgate Office Village. But they oppose the current proposal due to its height, impact on character, and not believing the consultation with the community has been genuine.”

A spokesperson for Viewpoint Estates said: “The proposals will deliver much needed housing, including affordable homes, state-of-the-art office accommodation to re-provide and create new jobs, and new public space in the heart of Southgate – on a brownfield site earmarked by Enfield Council for mixed-use development.”

ANGEL EDMONTON

Calls for pedestrian crossing

ROAD SAFETY CAMPAIGNERS are calling on Transport for London (TfL) to install a new pedestrian crossing on Sterling Way.

To get to Silver Street Station, many pedestrians cross Sterling Way dangerously because the safer route to the station requires them to walk a longer distance and navigate six lanes of traffic, waiting for four sets of lights.

A blogger on the Better Streets for Enfield website said: “One afternoon I stood and counted 20 people making this dangerous cross-

ing in the space of a minute. There is clearly demand for a crossing here.”

TfL has ruled out installing a new crossing, but says other measures are being taken. Penny Rees, head of network sponsorship, said: “We continue to work on plans to make improvements to Sterling Way, which will see temporary traffic barriers replaced with a permanent alternative. We are investigating the impact of these changes on safety and aim to have final designs in place over the coming months.”

BUSH HILL PARK

Mural in the park



Local artist Karen Rubins with children from George Spicer and Kingsmead schools

A NEW URBAN ART PROJECT at Bush Hill Park was unveiled by the mayor of Enfield at the park’s third summer picnic.

The project was led by local artist Karen Rubins who created the piece of work with help from children from George Spicer and Kingsmead schools. It was funded with £5,000 from the mayor of London’s ‘Culture Seeds’ programme, which offers grants to support community-led cultural projects in London.

The murals have been painted on

to a shelter that was attracting anti-social behaviour. It has now been transformed with scenes representing the four seasons.

Councillor Kate Analoue, Enfield mayor, was joined by cabinet member for environment Guney Dogan. Cllr Dogan said: “These kinds of events wouldn’t be possible without the support of the community and the relentless energy of the many volunteers. Congratulations to them all for all their hard work.”

BOWES

Petition row

BY SAHIRA RAJA

ENFIELD COUNCIL HAS DENIED a funding cut to Bowes Primary School will mean the “death” of its Southgate Green site. More than 1,000 people have signed a *change.org* petition which claims the loss of temporary classroom funding “will decimate the school and disadvantage remaining pupils”. Bowes is a ‘free school’ run by Enfield Learning Trust but its expansion had been supported by council-funded ‘bulge classes’. Rick Jewell, cabinet member for children’s services, said: “There seems to be some misunderstanding. Enfield Council will fund places at the school if Enfield Learning Trust wish to admit pupils. However, there would be a delay in funding of one year due to funding formula arrangements. This is the same for all schools.

“Based on 2019 admissions there are surplus primary places in Enfield, including the local area.”



Baby Anila weighed 5.725kg

EDMONTON

Biggest baby

THE HEAVIEST BABY BORN IN England this year has been delivered at North Middlesex University Hospital. Baby Anila weighed 5.725kg (12.6lb) and was born naturally. Mum Armonita, from Edmonton, said: “My other children were all quite heavy when they were born but Anila is definitely the heaviest. The midwives here have been amazing and I’m glad that Anila is healthy and happy.”

Maria Kane, chief executive of North Middlesex University Hospital, said: “Our maternity team are proud of all babies born at the North Mid, and especially proud of baby Anila and her mum. We wish them a wonderful life.”

PALMERS GREEN

Wild swimming campaign

A CROWDFUNDING CAMPAIGN to revive ‘wild swimming’ in Broomfield Park has been launched by Broomfield Pond Swim Society.

The boating lake adjacent to Alderman’s Hill was used as a paddling pool between 1900 and 1933 and the society’s campaign aim is to “get people back in the water” by creating two clean, swimmable ponds in the park. So far they have raised more than £45,000 – including a £40,000 pledge from Mayor of London Sadiq Khan – and are aiming for £121,000.

The ponds would feature a mini pop-up water park for children, giant water slide, toy boat regatta and a water lantern festival.

To support the crowdfunder:

Visit spacehive.com/broomfield-pond-swim-society

Enfield Ignatians, in blue and gold, competing in a scrum against Hammersmith and Fulham last season Credit Rob Bruce



Spirit of rugby

Jonathan Landi introduces Enfield Ignatians, a local rugby club with a proud history

Enfield Ignatians just celebrated its 70th birthday and now this most hospitable of rugby clubs is looking forward to the 2019-20 season.

Based at Enfield Playing Fields, the blue-and-golds run three senior sides as well as a thriving junior section which caters for most younger age groups.

Enfield Ignatians were founded in 1949 and their previous homes include Tottenham, Woodford and Winchmore Hill, prior to taking up residence at Donkey Lane in the 1980s where they still play today. Crowned champions of Middlesex Division Four in the 1989-90 campaign, they

enjoyed an upward ascent until a 15-year stay at level seven ended with relegation from London Two North-West last season.

Head coach Shane Manning is clearly hoping that Ignatians' stay in London Three North-West proves to be a short one, and the New Zealander is very much planning for promotion. "Our aim is to get promoted," he says. "Our pre-season has already started and we've had a number of new recruits. It's still early but I think the club is in a better place compared to a year ago.

"Player numbers [at training] have been fantastic and the young colts are coming through,

which is great for club development. Ideally, you want the young guys pushing the older heads for places."

A key plank of the club's long-term plan revolves around the second team, which will effectively suck in young talent and operate as a development side in Herts-Middlesex Merit Table Two next season.

Past winners of the Middlesex Bowl, and beaten finalists in the main county competition, the 2008 Middlesex Cup, numerous players from the club have been capped by Middlesex and Hertfordshire at various levels. Further up the scale, former players Denis and

Phil Sanders had spells at Saracens and Wasps, and a future All Black scrum-half, Mark Donaldson, spent a season at the club in the 1970s before national glory beckoned.

Enfield Ignatians have a thriving social scene and loves big projects. In 2013 a 63-strong party successfully toured South Africa and plans are well advanced regarding a 2020 tour of Canada. In 2014 the club also took part in the 'Big Day Out' project by successfully transferring all its fixtures into a single-day rugby marathon at Saracens' Allianz Park, in front of the Sky cameras. You can't fault their drive and imagination!

Fresh start for Towners

BY ANDREW WARSHAW

After a summer of comings and goings Enfield Town FC start the new football season – in the renamed BetVictor Isthmian League – with fresh determination.

Despite finishing tenth in 2018/19, seven places higher than 2017/18, there was disappointment and frustration that the club failed to achieve a play-off place. There will be fewer resources available for new players this time round, but manager Andy Leese is determined to learn from his mistakes and create a positive vibe in the dressing room which, at times last season, was lacking intensity.

While several players have moved on, some familiar faces are returning – none more so than goalkeeper Nathan McDonald, a popular figure during his previous spell at Donkey Lane. Another notable returnee is right-back Jon Muleba, who made 45 appearances for the Towners in 2016/17, while new arrivals include proven goalscorer Sam Bantick, winger James Potton and experienced midfielder Scott Thomas.

The club has also managed to persuade highly-talented and popular striker Muhammadu Faal,

"I'm quietly confident we'll be very competitive"

whose 2018/19 campaign was blighted by injury, to stay on and sign forms for the forthcoming season. "I'm delighted to get Mo back in to the club," says Leese. "He showed us what he can do last year and now that he's fit again I'm sure he will replicate last season's form."

Speaking of the summer revamp, Leese is optimistic about the new-look squad. While a number of key players have departed, much of the nucleus of last season's team have been retained. In most cases the departures were unavoidable. "Every year, at every level, players get offered what they feel are better deals that suit their personal circumstances. A club like ours simply cannot compete to get them to stay. "The league has plenty of clubs geographically local to us now, all vying for similar players which makes it very challenging when you are negotiating. I can't deny that we set out last season to be a top-five side.

"Injuries to key players didn't help us in the second half and then we ran into teams which had momentum. The squad itself didn't quite have the right balance or the right characters."

If that sounds like excuses, Leese is brutally honest when it comes to taking responsibility. Many Town fans became disillusioned with the playing style last season and Leese has pledged to put that right, notably playing two strikers when possible, starting with the opening game of the season at Lewes on Saturday 10th August. He said: "We're ready to go again and I'm quietly confident that we'll be very competitive."

Netball cash boost

Enfield Council has been given £150,000 to resurface nine netball courts – helping to build the sport's popularity following last month's Netball World Cup held in Liverpool.

The improvements will ensure Broomfield Park in Palmers Green can continue to host the North London Netball League (NLNL), which has been fundamental in nurturing local talent.

Enfield has a long association

with netball, with four clubs based in the borough – Minchenden, Oakwood, Palmers Green and Southgate Olympic. Teams in the NLNL provide an opportunity for children to train and socialise outside of school and progress in the sport at a competitive level.

The council was awarded the money as part of a £1.7million investment by London Marathon Charitable Trust (LMCT) and will use it to resurface nine courts, six

of which will have dual use with tennis. More than 1,000 people currently use the netball courts and the aim is to boost participation by 20% over two years.

Guney Dogan, cabinet member for environment, said: "We warmly welcome this grant from LMCT which will make a massive difference to the facilities we are able to offer in the borough. The resurfacing of these courts will provide a safe and fun environ-

ment for all and in turn will help to ensure the survival of NLNL.

"With a growing focus on pitch sports, we are delighted that with our ongoing investment we can make sporting activities much more accessible."

For more information about North London Netball League:

Tweet @NLNetballLeague
Visit nl.nl.co.uk

Support local independent journalism

**Have your
say! Take
part in our
readers'
survey here:**

Visit enfielddispatch.co.uk/survey/

What we do

Here at *Enfield Dispatch*, we do things differently. We believe that local newspapers should put the concerns of the local community at the heart of their publication. We combine professional journalism with voluntary contributions from people who live and work in the local area and create content which is responsive to and reflective of the community.

These are challenging times for print media, with many newspapers closing and advertising revenue in decline, but our not-for-profit model offers a new approach to creating local news which is inclusive and accountable.

Visit enfielddispatch.co.uk/join

How you can help

As a not-for-profit publication we rely on the generous support of our community. We look to our readers, who recognise the value of independent journalism, to help support the continuing publication of *Enfield Dispatch*.

Rewards

By becoming a member, not only will you support our publication, but you can access rewards.

£3 per month upwards:

membership certificate, name in the paper and website, pin badge

£5 per month upwards:

home delivery, tote bag, membership certificate, name in the paper and website, pin badge

Current members

Derek Grant, Michael Dickinson, Michael Cole, Brendan O'Brien, Young Notes, Ed Balleny, Natasha Boyde, Elizabeth Crosthwait, Richard Stones, Philip Ridley, Suzanne Beard, Chris Kaufman, Martyn Stogden, Susan Cook, Rupert Price, Meryn Cutler, Andrew Irvine, Seton During, Basil Clarke, John Naughton, Right at Home Enfield, MumSing Choir, Penelope Williams, Lloyd Tew-Cragg, Andrew Warshaw, Anna Crowley, Neil Churchill, Karl Brown, Anthony Fisher, Dan Wright, Residents of Edmonton Green, Kay Heather, Julia Mountain, Excellence in Learning Community, Jerome O'Callaghan, Basim Jafar, Danilo Barani, Carole Stanley, Mervyn Maggs, Aditya Chakraborty, Norman Bennett, Vivien Giladi, Greg Andrews, The Old Enfield Charitable Trust, Matt Burn