

ENFIELD DISPATCH

Nº. 18 THE BOROUGH'S FREE COMMUNITY NEWSPAPER

MAR 2020

FEATURES

New climate network is inspiring people to take action

P. 4

NEWS

Piccadilly Line upgrade to be prioritised by TfL

P. 6

ARTS & CULTURE

Enfield Choral Society concert celebrates female composers

P. 13



Football teams from Eversley and Raglan primary schools won the chance to represent Tottenham Hotspur at a Premier League tournament this May. Youngsters competed at the club's Hotspur Way Training Centre in Bulls Cross, Enfield, with the team from Eversley (pictured) winning the under-11 girls tournament. They received medals from former Spurs captain Ledley King.

Council's £2bn spending spree will double borrowing

Fears over financial risk taken by local authority

BY JAMES CRACKNELL

Enfield Council has agreed a new capital programme that includes “unashamedly ambitious” plans to spend more than £2billion on various projects over the next decade.

The bulk of the investment is in new homes and associated infrastructure, with £520million earmarked for the council's flagship redevelopment project, Meridian Water, including a £156m government grant awarded to the Edmonton housing scheme last

summer. The local authority is also planning to build 3,500 council homes across the whole borough, requiring £656m in borrowing over the next ten years.

Other investments include £21m on school expansion work at Durants, West Lea and Springfield schools, as part of nearly £93m in planned spending on education. Another £71m is earmarked for improvements to highways over the next ten years, £47m on redeveloping Montagu Industrial Estate (see Page 14), £10m on expanding cemeteries, and £5m

on installing LED street lamps.

Serious concerns have been voiced, however, over the amount of risk being taken by the council. Projected borrowing levels have doubled, with the council needing to secure £1.22bn in loans to fund its capital investment plans between now and 2030. This comes on top of existing borrowing, which has increased by 52% over the last two years from £597m at the start of 2018 to £911m at the start of 2020.

Opposition Conservative councillors claim “rampant” borrowing – which comes after a govern-

ment-imposed cap was lifted in 2018 – leaves the authority vulnerable to a rise in interest rates. Problems could also arise if the council is unable to meet its projected returns on investment or fails to make its scheduled cost savings, while council documents warn uncertainty over Brexit “may result in volatility in the property market... consequently impacting the capital strategy”.

In a budget discussion last month, Conservative leader Joanne Laban

CONTINUED ON PAGE 2



enfielddispatch.co.uk



@EnfieldDispatch



enfielddispatch@socialspider.com



The Dispatch is supported by Chamberlains Estates – turn to page 3

Sales & Lettings Agents

Ce

Chamberlains

020 8366 3551

ED.

Nº.18
MAR 2020

Enfield Dispatch is the borough's free community newspaper. We publish monthly and distribute 10,000 free copies of each issue to cafés, pubs, community centres, libraries, GP surgeries, schools, hair salons, and outside railway stations.

Publisher

David Floyd

Editor

James Cracknell

Designer

Jonathan Duncan

Head of Advertising

Klaudia Kiss

Head of Operations

Paige Ballmi

Engagement Manager

Penny Dampier

Contributors

Simon Allin, Vicki Pite, Laverne Johnson, Jenny Godfrey, Jamie Dunmore, Julie Reeves, Ayfer Orhan, Emma Friddin, Towyn Mason, Jo Johnson, Mark Sproson, Andrew Warshaw, Jessie Mathewson

CONTACT

Call 020 8521 7956

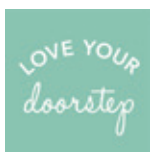
Email EnfieldDispatch@socialspider.com

Post Salisbury House, Bury Street West, Enfield N9 9LA

ADVERTISING

Contact Klaudia Kiss:

Call 020 8521 7956

Email klaudia@socialspider.com

We are grateful to Love Your Doorstep for their ongoing support



Enfield Dispatch is a member of IMPRESS: The Independent Monitor of The Press. For more information on the Dispatch's complaints policy and how to make a complaint visit: enfielddispatch.co.uk/complaints

▶ CONTINUED FROM PAGE 1

warned: "If you continue to spend, the interest on our debt will surely impact day-to-day services. If you don't get a return on investment, it will be the very people the administration wants to help that feel the failure the most."

It is not just the Tories that are sounding the alarm, with a former Labour cabinet member telling the *Dispatch* the council could be heading for a financial reckoning. Alan Sitkin led the economic regeneration portfolio under previous council leader Doug Taylor, who was ousted by Nesil Caliskan two weeks after he boosted Labour's majority at the 2018 local election. Alan said: "We increased our capital programme as well, but how they have got it to £2.25bn is frightening."

"It is almost like she [Cllr Caliskan] is risking Enfield's solvency in the hope the government will bail her out down the road."

The council leader dismisses

these concerns, describing the local authority's budget as "sound" and the capital strategy as an "invest to save" plan. She told a cabinet meeting last month: "We want everyone to fulfil their potential. We will not sit on the sidelines and let the housing market get worse, we will build more council homes and we will intervene where we need to."

"To do all these things we have to be a modern council. While we want to in-source as many council services as possible, we will invest in things that help residents access services."

"The government continues to abandon the people of Enfield, but this Labour administration won't. We will stand up for local people."

While the government is increasing the amount of grant funding it gives to local authorities for the first time in ten years – with a one-year boost of 6% – the council still only receives around half of the money from central government that it did a

decade ago. In its revenue budget for 2020/21, the council is planning to make another £11.9m in cuts to services on top of the £178m saved since 2010. Spending on youth services, however, has been boosted by a new £1.3m grant from City Hall. Reserves will be reduced by £1.5m over the year, but Mary Maguire, cabinet member for finance, assured councillors: "Our reserves are at an acceptable level."

Ongoing demographic pressures have led councillors to agree another rise in council tax of just under 4%, with half of this increase being allocated solely for spending on adult social care. People living in an average Band D property will be paying £64 more in 2020/21.

Cllr Caliskan added: "This budget reflects this Labour administration's values and priorities, and that is to first protect the most vulnerable in our community. This budget is unashamedly ambitious for the borough."

Specialist care home planned



A computer-generated image of how the care home will look

BY SIMON ALLIN,
LOCAL DEMOCRACY REPORTER

A specialist care home designed to help older people live independently for longer has won planning permission.

Reardon Court 'extra care' home in Cosgrove Close, Winchmore Hill, will provide 91 homes for 'affordable' rent in blocks up

to four storeys high. The self-contained flats, which will mainly be one-bedroom units, will come equipped with a kitchen, bathroom and living space.

They will be built around a courtyard featuring trees, communal tables and chairs, and a petanque ball game court. Care workers will be available on site around the clock in case any of the residents need assistance.

The home is designed to help people live healthy and active lives while allowing them to keep their links to the local community. The old two-storey Reardon Court nursing home, closed in 2016, will be knocked down to make way for the new, larger building.

There were four objections to the scheme, with one neighbour calling the building design "ugly", but Akram Hamouda, an associate architect at Pick Everard, defended the plans. He said: "It is not something intrusive – it will fit into the context of the surrounding buildings."

The 'extra care' home will cater for people with physical and mental health conditions, including dementia. Demand for this type of accommodation is set to rise, as the borough's population of over-65s is growing more rapidly than the England average. There are currently 1,435 people over the age of 65 in specialist accommodation in the borough – projected to rise to more than 2,000 people by 2030.

As well as helping older people, the scheme is expected to save the council around £740,000 per year on care placements. Nine councillors voted in favour of the plans, with one abstaining.

Cycling grants

Three Enfield community groups have been awarded £25,000 by Transport for London to encourage people from different backgrounds to take up cycling.

Muslim Community and Education Community Centre at Palmers Green Mosque wants to launch a women's cycling group for Muslims; the British Alevis Federation in Edmonton will run a project for Turkish and Kurdish speakers with London Cycling Club; and Enfield Children and Young Persons' Services is offering group cycling sessions to build confidence and reduce social isolation, with a focus on women from minority ethnic groups.

Enfield Council will offer ongoing support to ensure the schemes are successful.

Rise in SEND

An increasing number of school pupils in Enfield with special educational needs and disabilities (SEND) "has put considerable pressure" on school places, according to an Enfield Council report.

The number of places available for SEND pupils has risen from 598 five years ago to 913 now, but the council report stated that "because there have not been enough places in the borough, more expensive out-of-borough places have been accessed". Plans are now being drawn up to expand two existing special schools and build one new special school.

Crackdown

Nearly 60 arrests have been made as part of a Metropolitan Police drive to tackle violence and robberies in Enfield and Haringey.

During one week last month 58 arrests were made at residential addresses across the two boroughs, which share a joint police command unit. Officers also seized in excess of £250,000-worth of stolen property, believed to be the proceeds of around 300 robberies across North London. Offensive weapons, including knives and machetes, were also recovered.

The arrests were the culmination of a covert investigation lasting nine months. Detective Superintendent Luke Marks, who led the operation, said: "Serious organised crime and drug supply is responsible for a high proportion of violence and these warrants are part of our plan to bring the individuals responsible to justice."

Chamberlains Estates

Residential Sales & Lettings Agents

020 8366 3551

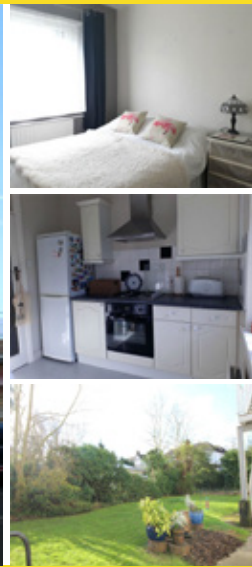
chamberlainsestates.com

FOR SALE



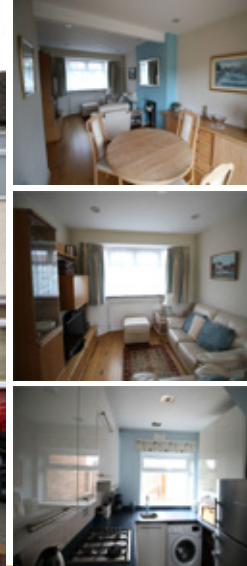
A two bedroom, first floor retirement flat
EPC C72 – Cavell Drive, Enfield EN2 **£279,950 Leasehold**

FOR SALE



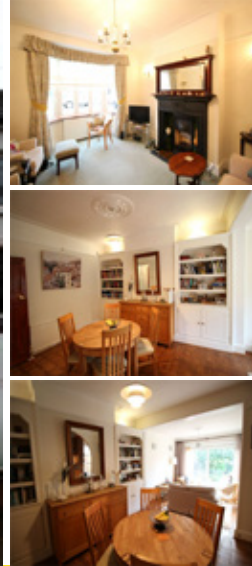
A well presented two bedroom ground floor apartment
EPC D65 – Windmill Hill, Enfield EN2 **£340,000 Leasehold**

FOR SALE



A well presented three bedroom terraced house
EPC D68 – Baker Street, Enfield EN1 **£450,000 Freehold**

FOR SALE



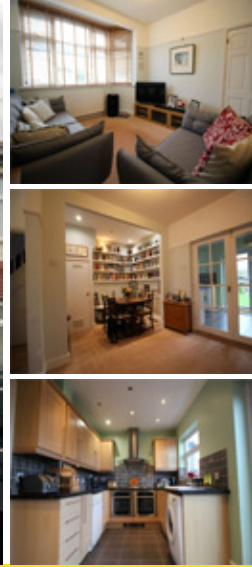
An immaculately presented three bedroom extended three bedroom family house
EPC D62 – Gardenia Road, Bush Hill Park EN1 **£625,000**

FOR SALE



A spacious semi detached house close to Enfield Town
EPC D65 – Chase Side, Enfield EN2 **£624,995 Freehold**

FOR SALE



A well presented, extended four bedroom family house
EPC D61 – Carisbrook Close, Enfield EN1 **£600,000 Freehold**



People share their ideas at the inaugural meeting of Enfield Climate Action Forum in January

New climate group inspires action

Councillor Vicki Pite on how Enfield Climate Action Forum's launch is already inspiring local efforts

Enfield Climate Action Forum (EnCAF) held its inaugural meeting in January with a huge buzz of enthusiasm.

More than 70 people turned up to a packed meeting at the Dugdale Centre; both people who want to make a difference and organisations keen to develop a forum for collective action around our shared imperative of tackling climate change. Civil society in Enfield, writ large.

The speakers kicked the meeting off by pro-

viding a thought-provoking backdrop and the audience responded enthusiastically, but the real drive began as the meeting ended and people began to exchange ideas. The room was aloud with chatter and engagement, leading one participant to say: "Look at the energy in the room. It is a clear sign that this is what is needed and how successful it has been."

And it was. Now almost 60 organisations are interested in taking part. Bringing enthusiasts together was the catalyst; the whole

much more than the sum of its parts.

From this meeting several initiatives emerged. Some are discussing how climate change might dictate a change in lifestyles, one group is working on how to engage local businesses in exploring how to reduce their carbon emissions; while there's a team which will monitor Enfield Council's strategy on reducing emissions as well. Then there's the concerted effort, through questionnaires and small meetings, to map the interests and priorities of members, their friends and families; indeed, anyone who is interested in supporting EnCAF may contribute.

There is a major drive to recruit as many individual supporters as possible to join the numerous affiliated organisations – look for Enfield Climate Community Group on Facebook and sign up for the fortnightly newsletter, now coming up for the seventh edition.

Mapping interests is not an end in itself though, because EnCAF plans to build on the feedback to identify our shared priorities so that we can help and encourage each other, and our organisations, to make Enfield carbon neutral by 2030. It is our view that while national governments, global organisations and businesses worldwide must do the heavy lifting, we as civil society have a major part to play.

One of the most heartening aspects of the launch was seeing the commitment of schools to taking the climate emergency seriously. We shouldn't be surprised, after all it's Greta Thunberg who, as a 17-year-old, has raised worldwide awareness perhaps more than any other person. Students are discovering what action they can take and holding us to account. Rightly so, it's their future.

What's next? A great deal. It's not just about carbon emissions – the biodiversity on which life on Earth depends is threatened. EnCAF will be turning its attention to how to sustain biodiversity. The stakes are high, and the time is short.

For more information about EnCAF:
Email emergency@encaf.org

A safe space for young people

BY JENNY GODFREY

We have started an initiative called Palmers Green Youth Provision (PGYP) at St John's Church, aiming to empower young people to learn important life skills and get involved in activities which will help boost their confidence and self-esteem.

Giving young people a sense of 'belonging' can help to prevent gang and knife crime, and we have discerned this as much needed in our community. PGYP is comprised of three elements, aimed at young people aged from 14 to 18 years.

The first is a Friday afternoon session called 'outside the box' – starting on 13th March – where young people can come after school to be safe and have fun with others. Every term we will offer a six-week life skills workshop, run by local community volunteers. Enfield Council is the initial provider, we will then have others come in to work alongside the volunteers that we have recruited.

The second provision is called 'free spirit mentoring'. We are in the process of training up volunteers from the local community to mentor young people, involving pursuits such as gardening or arts and crafts. This will be done in co-operation with other agencies and schools.

Finally, we are offering a support group for parents and carers of young people who are vulnerable and have got involved with gang and knife crime. This group will meet every two weeks and is aimed at parents and carers who need support.

All three of these elements will be run at the church, but our helpers come from all walks of life and backgrounds. You don't need to be a church-goer to attend. The idea is to bring the whole community together to help our young people be safe and make a difference. We have the support of local businesses and the police and all volunteers will have basic training and are DBS checked to comply with safeguarding regulations.

We are also very grateful for all the support and donations we have received from our local community so far. They say it takes a village to raise a child – in our case it is the wider Enfield community that is coming together to keep our teenagers safe!

For more information about PGYP:
Email youthprovisionpg@gmail.com

Feeding the needy

Jamie Dunmore, founder of Integrity Food, on helping those most in need

It is believed that on any given night around 3,000 people sleep rough in the UK. How is it that in the sixth richest country in the world, so many are without a roof over their head?

Giving these people shelter and the support they need to get back on their feet wouldn't be a bank-breaking expense, but despite great work from charities, it's a problem that hasn't been fixed. There are still thousands who shiver all night, laid under cardboard next to multimillion-pound buildings.

I feel like you should do what you can to assist people in a tough situation, so I've started a social business to give away meals to

those who might otherwise go hungry; for every meal we sell, we give another to a person in need.

My business is called Integrity Foods – integrity with the willingness to get gritty to achieve goals – and currently we're at The Sidings N21 Farmers' Market in Winchmore Hill, on Sundays 9am–2pm. We sell soups, stews and hotpots which are all vegan, with no common allergens.

We hope to be stocked in shops in the near future. Get in touch to find out where our products can be bought, if you're looking to support us! Or you can of course come down to The Sidings right next to Winchmore Hill Station and try some of our food for your-



self – while helping those in need.

The goal is to give away 468,000 meals by 2022. That's the amount of meals it would take to feed 3,000 people, three meals per week, for a

year. It sounds like a lot, but there's a lot of people in need, and you've got to give it a go!

For more information:
Visit integrityfoods.com

Get your skates on

Roller Station founder Laverne Johnson on her plans to open a new rink in Palmers Green



Roller Station has been running roller skating sessions at a school in Edmonton since 2016

I am a local entrepreneur who has lived in Enfield for 20 years and I am the founder and director of Roller Station.

My journey began in 2015, when I was made redundant. In January 2016 I enrolled on the Inspiring Women's Programme at Enterprise Enfield, a

six-month course designed to prepare women ready to start their own business, and later that year I set up Roller Station.

With the help of my son, daughter, and a group of dedicated skate marshals, we provide roller skating lessons, parties, and team-building events as a weekend venture. We have been using a space

rented from Alyward Academy in Silver Street, Edmonton, since October 2016. Roller Station recently won 'Best Roller Skating Club in London' at the London Prestige Awards.

We are now proposing to revamp a disused warehouse in Palmers Green and turn it into a designated roller rink. Through an ongoing crowdfunder, the £103,047 we hope to raise will pay to refurbish the space completely. We believe this roller rink will have many benefits for Palmers Green and Enfield borough.

Our aspiration is to provide a designated roller rink that would make the exciting experience of roller skating available to every household, irrespective of income. We want to bring people together by building links and reducing social isolation, while giving people access to learning and creating work opportunities. Another social purpose behind this project is to bring positive attention to the borough by creating a vibrant space, which will give people of all ages the chance to become closer, in a fun way.

This campaign is a promising project that could transform the area into an enthralling destination. It will not only improve social inclusion by bringing the community together but also promote

the local economy by creating employment and training opportunities.

We are asking people to support Roller Station by investing in the refurbishment of a disused warehouse that has been empty for six years. With enough public support, we could also be in the running for a pledge of up to £50,000 from the mayor of London. So, what are you waiting for? Become part of this fantastic campaign!

To pledge your support for Roller Station's new rink in Palmers Green:

Visit spacehive.com/new-roller-rink-for-enfield

Advertisement

Enfield & Tottenham Team
that Slimming World feeling!
Call Michelle on 07504 002 555
slimmingworld.co.uk 0344 897 8000

Advertisement

DO YOU RUN A FOOTBALL TEAM? WE'VE GOT THE PITCH FOR YOU.

WE HAVE A SELECTION OF PITCHES WITHIN THE BOROUGH, WHICH ARE COMPETITIVELY PRICED.

We have a variety of pitches available to hire, across the borough of Enfield. To find out more, please visit our website today.

www.enfield.gov.uk/pitches



There is a smarter way to EMBRACE YOUR RETIREMENT

Are you close to retirement? Then you have one more big decision to make - how to draw down your pension and get it working best for the lifestyle you want.

There are a few options to consider, do I take out a lump sum? Invest some of it? Or get an income for life?

At Archers, we have over 25 years of expertise to help you find a plan that best suits your needs.

So, no matter who your pension is with, contact us about your retirement planning with Archers - it's a smart way to make the most of what you have and fully embrace your retirement.

For more information on any other matter contact Archers on:
020 8364 5445 / 020 8364 6099
or email: info@archersonline.co.uk

Archers
Financial Services Ltd

Archers Financial Services Ltd, 1 Windmill Hill, Enfield, Middlesex EN2 6SE
Tel: 020 8364 5445 / 020 8364 6099 • Email: info@archersonline.co.uk • www.archersonline.co.uk

Archers Financial Services Ltd is directly authorised and regulated by the Financial Conduct Authority (FCA: 650075). Your home may be repossessed if you do not keep up repayments on a mortgage or any other debt secured on it. Investments can be made into a selection of funds which invest in different asset classes such as cash, gilts, property and stocks & shares. These funds carry differing levels of risk. The value of the funds can fluctuate and may fall as well as rise. The Financial Conduct Authority does not regulate taxation and tax advice.

TfL to prioritise Piccadilly upgrade



The Piccadilly Line stops at Arnos Grove Station in Enfield borough, as well as Southgate, Oakwood and Cockfosters stations

BY JESSIE MATHEWSON,
LOCAL DEMOCRACY REPORTER

Upgrading signalling on the Piccadilly Line is the “number one priority” for Transport for London (TfL), according to the network’s boss.

Commissioner Mike Brown said the increase to capacity would be “like an entirely new service in London”. Modern signalling allows more trains and a more reliable service on London Underground

lines – meaning the Piccadilly could run services every 90 seconds.

TfL has already commissioned 94 new trains to replace the 50-year-old rolling stock on the line, which stops at four tube stations in the borough. The first are expected in 2023. Their design will allow 12% more passengers to board than the current trains – but total capacity could be boosted by 60% with a more regular service.

The proposed £2.45billion signalling upgrade was shelved in

2018, when TfL tightened the purse strings in an effort to cut its budget deficit. It would allow 21,000 more passengers to use the line every hour.

London Assembly member Joanne McCartney, who represents Enfield and Haringey, said the difference between the Piccadilly and Victoria lines was now “very stark”. She said it would be “completely bonkers” if new trains ran on the line for years without a signalling upgrade.

The Piccadilly Line also carries more people to Heathrow than any other rail service to any other airport, anywhere in the world. Joanne said: “For my part of North London this is our main route into Heathrow, the UK’s biggest airport – and it’s also the most affordable route.”

Mike Brown added: “Even when we get the Elizabeth Line [Crossrail] serving Heathrow directly, there will be an absolute imperative to ensure the Piccadilly Line is fit for purpose.

“We really have to remind people the tube upgrade isn’t complete.”

Care firm closed

BY SIMON ALLIN,
LOCAL DEMOCRACY REPORTER

A company set up by the Enfield Council to provide adult social care is being wound up after less than five years.

The council decided to bring the wholly-owned company Independence and Wellbeing Enfield (IWE) back into direct local authority control. It comes after IWE struggled to compete with private sector providers and became an administrative burden.

The council set up IWE in December 2015 to look after some of the most vulnerable people in the borough, while raising income and saving money. One of the main ways it was supposed to bring in extra cash was by providing services to other councils.

But a cabinet report said IWE had not been able to develop wider commercial opportunities in a social care market that was “extremely challenged by many years of austerity”. Several social care firms in Enfield provide services to other councils, as well as

the NHS, because of lower property prices. Competing with these firms would have meant lowering IWE’s staff terms and conditions.

Councillors agreed to in-source the service at a recent cabinet meeting. Councillor Alev Cazimoglu, cabinet member for health and social care, said: “It is a very difficult commercial environment for social care providers, and bringing the services back in-house would simplify the governance arrangements and is in line with the current administration’s policy of in-sourcing services where it makes sense to do so.”

While three out of four regulated services provided by IWE are rated ‘good’ by the social care watchdog, Care Quality Commission (CQC), inspectors spotted problems at Bridgewood House. Opened just two years ago, it was rated ‘requires improvement’ following inspections in 2018 and 2019.

Council leader Nesil Caliskan added: “In-sourcing demonstrates there are better outcomes for our residents... outsourcing does not save money for the public sector.”

Advertisement

LONDON'S

No.1

COLLEGE

FE Choices Learner Satisfaction Survey

THINK COLLEGE

THINK EXPERIENCE

OPEN EVENT

Wednesday 18th March, 4:30pm - 7:00pm

Register now at www.waltham.ac.uk

- FE Week NICDEX league table for colleges

020 8501 8501

myfuture@waltham.ac.uk

707 Forest Road, Walthamstow, E17 4JB

Ofsted Good Provider

Create Your Future

Waltham Forest College

Capel Manor College

Your route to a brighter future

We are London's leading specialist land-based further and higher education College, offering a unique range of hands-on, immersive courses for young people and adults.

- Agriculture
- Animal Management
- Arboriculture
- Environmental Conservation
- Floristry and Event Styling
- Garden and Landscape Design
- Horticulture and Landscaping
- Saddlery and Shoemaking



Join us at an Enfield **Advice Session** or **Open Day**:

Advice Session Wednesday 11 March, 5 - 7.30pm

Open Day Saturday 28 March, 10am - 3pm

capel.ac.uk



'Rebels' from Extinction Rebellion outside Enfield Civic Centre in January, when they disrupted a council meeting

Why we staged council chamber protest

Julie Reeves from Extinction Rebellion Enfield explains the group's frustration at Enfield Council's climate inaction

At a full meeting of Enfield Council in January, rebels from the local group of Extinction Rebellion briefly disrupted proceedings to remind councillors of the climate crisis – and their notable lack of action following the 'emergency' they declared last July.

We stood up in the chamber to read out a declaration explaining why we felt compelled to take this disruptive action. We pointed out that while the council had committed to net zero carbon emissions by 2030, six months on this target was being treated with a severe lack of urgency.

We highlighted that in this time the council has met just twice to discuss the issue, and that there has

been no commitment to switching to a renewable energy supplier in order to reduce its own carbon footprint [see editor's note at end of article], or to divest the council's pension fund away from fossil fuel companies within a set timeframe.

In addition, the local authority continues to support plans for the rebuilding of Edmonton Incinerator, instead of considering more environmentally sound options. When complete, the new incinerator is set to release up to 700,000 tonnes of carbon dioxide a year, adversely affecting air quality and particularly impacting some of the borough's poorest residents.

Extinction Rebellion Enfield has had several meetings and email communications with the council since it declared its climate emergency, and as well as asking for a switch to a renewable power supplier and pension fund divestment, the group has also asked for a baseline to be established for the council's carbon emissions so that this may be used to measure progress

towards achieving the net zero carbon emissions target.

None of these requests have been met with action. Instead, the council has said that it will take a year to finalise a strategy, and that it moves slowly because it is a large organisation with over 8,000 employees. Despite this, only one part-time consultant has been assigned to address the issue.

In our view, this does not reflect the desperate urgency of the situation. The council has made its declaration and benefited from being seen to do the right thing with regard to the climate crisis but, so far, its commitment is hollow because nothing tangible has been put in place.

The rebels who disrupted the council meeting said that "wearing the badge of climate change without taking concrete action is nothing short of greenwashing".

EDITOR'S NOTE: Shortly before going to press the council announced its corporate buildings will start using green electricity from October.

Beginning of the Ponders End

In our latest councillor's column, Ayfer Orhan celebrates the spirit of Ponders End

I never thought when I became a councillor in 1998 that I'd still be serving in the year 2020! Yet here I am. Over the years I have seen enormous changes. Ponders End was first mentioned in historical records in 1593. Today, residents come together to celebrate not only its wonderful past but its diversity and cultural richness.

I have witnessed many memorable, and sometimes moving, moments when residents across the community have come together. Most poignant was the moment when local people gathered on the corner of Ponders End High street and South Street to remember those who lost their lives on that very spot when, during the Second World War, the Two Brewers pub was bombed. Today the small memorial park is enjoyed by the whole community, from its beautiful floral displays to the gold awards secured for Enfield in Bloom. A dedicated team from Friends of Ponders End Park help with the garden's upkeep.

Within the boundaries of Ponders End, there are many buildings of worship which are highly regarded and visited by local residents – particularly when they open their doors to the wider community to share food, culture and religion.

Ponders End Community Development Trust (PEC DT), the two Bangladeshi welfare associations, plus the many dedicated groups of volunteers from across all community

organisations, schools and clubs, are constantly active across the ward and host a wide range of community events.

The Alma Board is a recent addition and has a strong body of volun-



teers from Alma Residents Association, Enfield Council, developers and councillors. They make important decisions, supporting and galvanising residents in an area of much change and regeneration.

Ponders End is seeing one of the largest regeneration programmes for decades – much of it started taking shape in 2010. I am proud that we kept our regeneration promise and am pleased to have seen the first residents move into their new homes at Dujardin Mews, Alma Estate and Electric Quarter.

Cllr Orhan is one of three councillors representing Ponders End, alongside Susan Erbil and Doug Taylor (all Labour). Ponders End Ward Forum meets four times per year. Surgeries are by appointment only. Call 020 8379 2656 Email cllr.ayfer.orhan@enfield.gov.uk

First elected to Green Street ward in 1998, Cllr Orhan has represented Ponders End since 2006

"The council says it will take a year to finalise a strategy"

Advertisement



HM Government



CORONAVIRUS: PUBLIC INFORMATION

The Government and NHS are well prepared to deal with this virus.

You can help too.

The best way to protect yourself and others is:



Wash your hands with soap and water, or use a sanitiser gel, regularly throughout the day.



Catch your cough or sneeze in a tissue, bin it, and wash your hands.

If you have recently arrived back from specified areas follow the returning traveller advice. Check the list of areas and find out more at nhs.uk/coronavirus

Advertisement

Garden Waste Collection Service

Don't miss out on a full 12 months' service
by applying before 12 March 2020
www.enfield.gov.uk/greenbin

APPLY
NOW



Good for Enfield, Good for the Planet

www.enfield.gov.uk/greenbin



LETTERS

Send us your letters

Got an opinion on something in Enfield? We accept letters of up to 150 words from people and organisations in the borough. Email EnfieldDispatch@socialspider.com before the next deadline on **Tuesday 17th March**.

Thanks Enfield

Dear Enfield Dispatch

As the parents of missing Dunstable teenager, Tia Huggins, we would like to let the public know she has been found safe and well, and we would like to say a massive 'thank you' to all the people of Enfield.

We went into shops, schools, colleges, and stopped people on the street, plastering our missing posters on lampposts and bus stops. Everyone we spoke to in Enfield was genuinely concerned and we felt their heartfelt support and love towards us and our daughter. So in a time when everything seems toxic, Enfield restored our faith in human kindness.

Thomas Huggins
Dunstable, Bedfordshire

Boxed in

Dear Enfield Dispatch

Many drivers will be familiar with the complicated junction in Enfield Town where London Road, Silver Street, Church Street and Southbury Road intersect. I think some might now be questioning the decision to install yellow box penalty cameras there, plus the installation of an extra yellow box.

There had already been a yellow box on the junction for many years, but a new one appeared just in front of the first, and because of the sequencing of the traffic lights by the station it is virtually impossible, when it is very busy, for vehicles turning right from London Road to get round the junction without being caught in the new yellow box. If drivers decide not to, they end up blocking traffic, and from London Road you don't see the box until you turn the corner.

I wonder if the scheme has been tested to check its practicality, or if it is causing a situation where drivers will receive penalty notices because they are unable to avoid the way the boxes and lights are set up? It is what I would call a 'set for fail' scenario. At first sight, it appears to be about revenue generation rather than traffic flow.

Neil Littman
Winchmore Hill

Trust us

Dear Enfield Dispatch

I am writing to correct some inaccuracies about Bowes Southgate Green School (Council must save our school, Page 8, Issue 16). Firstly, Bowes Southgate Green is not a separate school but part of Bowes Primary School. It is an academy and part of Enfield Learning Trust, independent from Enfield Council. The trust currently has an agreement with Broomfield School to use part of its site until 2023.

The article suggests families would have to travel to Edmonton if this part of Bowes Primary School closes. This is not the case, as there are primary school places in Ofsted-rated 'good' schools within the local area. Furthermore, it is very unlikely the Department for Education would agree to a new school being created. In previous years, sites for a new primary school have been explored, but no suitable space has been found. Primary school numbers are declining in Enfield at the moment, which means no new schools are needed – except where there's considerable housing development.

Bowes Southgate Green is funded in the same way as any other school; based on its pupil numbers. There is no threat to withdraw this funding. But I do recognise the concerns of parents, which is why officers have been trying to find solutions to the issues raised.

Councillor Rick Jewell
Cabinet member for children's services

Sky high

Dear Enfield Dispatch

Astronomical house prices forced my son to leave London to start a family, so the need for local development is very personal to me. But it would be catastrophic for Enfield Council to approve the proposed Southgate skyscraper in its current form. It is a terrible mismanagement of taxpayer funds not to maximise development at Meridian Water, where the council has spent huge sums buying land and building a station. If they did, fewer units would be needed in Southgate, with no need to approve a 17-storey monstrosity ruining our low-rise neighbourhood. Councillors will be heroes if they lower the height – and vilified if they don't.

Alan Sitkin
Park View, Southgate

It's a joints effort

Emma Friddin from Healthwatch Enfield wants people to have their say on changes to planned operations for bones, joints and muscles

A consultation has recently been launched by North London Partners in Care, asking local people for their views on the future of planned orthopaedic surgery.

Hip and knee replacements are the most well-known type of planned orthopaedic surgery offered in the NHS, followed by operations on the hips, knees, shoulders, elbows, feet, ankles and hands. The word 'orthopaedic' simply refers to operations relating to bones, joints and muscles.

North London Partners in Care is a partnership of health and care organisations from the five London boroughs of Barnet, Camden, Enfield, Haringey and Islington – collectively known within the NHS as North Central London. It is proposing new ways to organise planned orthopaedic surgery for adults and wants to know what local people think of its proposals.

At present, waiting lists are too long for planned orthopaedic surgery; too many

operations are cancelled (many on the day) and demand for surgery is growing. Our local health leaders have realised that changes are needed to improve care across North Central London, to reduce waiting times and cancellations.

Adult NHS patients currently receive planned orthopaedic surgery at ten separate NHS and private sector hospital sites across North Central London. The proposals are to offer two NHS hospitals with dedicated operating theatres and beds, for patients who need to stay overnight after their operation – Chase Farm Hospital and University College London Hospital. It is hoped that having these dedicated hospitals will reduce the risk of cancellations and therefore shorten waiting times.

Patients will still have a choice of NHS hospitals for outpatient appointments and day surgery. There would also be improvements to education classes, rehabilitation, and support for patients with conditions such as

dementia or a learning disability.

You can read about the full proposals from the North London Partners in Care in more detail on the Healthwatch Enfield website, and there is a video to explain the proposals to you too. We want to know what you think about these proposals. Do you think the plan is a good idea? Do you have any concerns? You can share your views by completing our short online survey, or by attending a consultation event at Green Towers Community Centre, Edmonton Green, on Saturday 14th March from 10am–12pm.

To take part in the survey on orthopaedic surgery:
Visit smartsurvey.co.uk/s/OrthopaedicSurgery

For more information about Healthwatch Enfield and to get in touch:
Call 020 8373 6283
Email info@healthwatchenfield.co.uk
Tweet @HealthwatchEnf
Visit healthwatchenfield.co.uk



The Licensing Act 2003

Notice of application for the grant of vary of a premises licenses under section 34

Notice is hereby given that on the 11th February 2020 we have applied to Enfield Council for a grant to vary a premises license in respect of premises Asteria 115 Green Lanes N13 4SP.

The proposed licensable activities are to open at 6am to serve breakfast.

Any representations made by an interested party must be received in writing to Environment & Operational Services Place Directorate Enfield Council Silver Street Enfield EN1 3XY or by email to Licensing@enfield.gov.uk no later than 10th of March 2020 stating the grounds for representations.

The register of Enfield Council and the record of the application may be inspected at the council office at the address shown above during office hours.

It is an offence knowingly or recklessly to make a false statement in connection with an application. The maximum fine in which a person is liable on summary conviction of the offence is £5000.

Advertisement





The Green House

WORKSPACE FOR CHANGEMAKERS






www.bethnalgreenhouse.co.uk
info@ethicalproperty.co.uk
 01865 207 810
 244-254 Cambridge Heath Road, London E2 9DA

London Office Space for Social Impact Organisations

from £230 per person pcm + VAT

PUBLIC NOTICE
London Borough of Enfield
NOTICE OF DESIGNATION OF AN AREA FOR ADDITIONAL LICENSING
Section 56, Housing Act 2004

The London Borough of Enfield ("The Council") in exercise of its powers under section 56 of the Housing Act 2004 ("the Act") hereby designates the entire area of its district, as subject to Additional Licensing as described at paragraph 4. The designation applies to all Houses in Multiple Occupation ("HMOs") that are occupied under a tenancy or a licence as described at paragraph 4.

CITATION, COMMENCEMENT AND DURATION

1. This designation will be known as The London Borough of Enfield Designation of an Area for Additional Licensing of Houses in Multiple Occupation 2020. The Designation is made on 22 January 2020 and shall come into force on 1 September 2020¹.
2. The designation shall cease to have effect on 31 August 2025 (not more than five years) or earlier if the Authority revokes the scheme under section 84 of the Act.

AREA TO WHICH THE DESIGNATION APPLIES

3. This designation shall apply to the entire area of the London Borough of Enfield as delineated and edged red on the map in Annex A below.

APPLICATION OF THE DESIGNATION

4. The designation applies to all Houses in Multiple Occupation ("HMOs") as defined by section 254 of the Act that are occupied by 3 or more persons comprising 2 or more households as defined in Annex B, within the area described at paragraph 1 unless:
 - a. the house is an HMO that falls within the nationally prescribed category of HMO that is required to be licensed as a 'mandatory HMO' under section 55(2)(a) Part 2 of the Act²;
 - b. the house is subject to an Interim or Final Management Order under Part 4 of the Act;
 - c. the house is subject to a temporary exemption under section 62 of the Act;
 - d. The house is an HMO that is a building or part of a building that is not an HMO for the purposes of licensing under Part 2 of the Act³ as defined in Annex C/ Schedule 14 of the Act; or
 - e. it is a building converted into self-contained flats but does not meet the standards of conversion required by the Building Regulations 1991, and where less than two thirds of the flats are owner occupied to which Section 257 of the Housing Act 2004 applies

EFFECT OF THE DESIGNATION

5. Subject to sub paragraphs 4(a) to (e) above, every HMO of the description specified in that paragraph in the area specified in paragraph 3 shall be required to be licensed under section 61 of the Act.
6. The designation falls within a description of designations in relation to which the Secretary of State has issued a General Approval under section 58 of the Act, namely, The Housing Act 2004: Licensing of Houses of Multiple Occupation and Selective Licensing of Other Residential Accommodation (England) General Approval 2015 which came into force on 1 April 2015.
7. The London Borough of Enfield will comply with the notification requirements contained in Section 59 of the Act and shall maintain a register of all houses registered under this designation, as required under section 232 of the Act⁴.

If you are a landlord, managing agent or a tenant, or if you require information regarding this designation, or to apply for a licence, further information and assistance is available from the Council's Private Rented Property Licensing Team by email on PRSH@enfield.gov.uk, or by telephone on 020 3821 1761 or by writing to Private Rented Property Licensing Team, London Borough of Enfield, Civic Centre, Silver Street, Enfield, Middx, EN1 3XH. The Designation may be inspected at the above address during office hours.

All landlords, managing agents or tenants within the designated area should obtain advice to ascertain whether their property is affected by the Designation by contacting the Council's Private Rented Property Licensing Team.

Upon the Designation coming into force any person who operates a licensable property without a licence or allows a licensed property to be occupied by more households or persons other than as authorised by a licence, is liable to prosecution and upon summary conviction is liable to an unlimited fine pursuant to the provisions of section 72 of the Housing Act 2004. A person who breaches a condition of a licence is liable upon summary conviction to an unlimited fine. The Council, as an alternative to initiating a prosecution, may pursue one or more of a range of other enforcement actions including the imposition of a financial penalty of up to £30,000 and/or taking management control of the unlicensed HMO. Further, where an offence has been committed an application may also be made by the Council and/or tenant under the provisions of section 73 and 74 of the Housing Act 2004 for a Rent Repayment Order to pay back up to 12 months' rent, Housing Benefit or Universal Credit.

Signed

Portfolio holder and elected Cabinet Member

For and on behalf of London Borough of Enfield

23 January 2020

Annex B: HMOs to which this designation applies [subject to paragraph 4 above]

Please see Section 254(1) of the Housing Act 2004, except the designation does not apply to HMOs described in Section 254(1)(e) - converted blocks of flats to which section 257 applies.

Annex C: Buildings which are not HMOs for purposes of this designation.

Please see Schedule 14 of the Housing Act 2004.

- 1 Subject to any decision made if called in to Enfield Council's Overview and Scrutiny Committee
- 2 Section 55 of the Act defines which Houses in Multiple Occupation are required to be licensed under the Act. See also The Licensing of Houses in Multiple Occupation (Prescribed Descriptions) (England) Order 2005 (SI 2006/371)
- 3 Schedule 14 Housing Act 2004 describes the buildings that are not HMOs other than for the purpose of Part 1 [HHSRS]
- 4 Section 232 of the Act and paragraph 11 of SI 373/2006

Annex A: Map of additional licensing designation showing boundary in RED



Strings attached

Towyn Mason previews an upcoming concert from Winchmore String Orchestra



Winchmore String Orchestra was founded in 1991 Credit Nikos Zarb

There's no shortage of amateur symphony orchestras in North London. Much rarer are amateur string orchestras, but one has become a prominent feature of the musical landscape well beyond its own borough of Enfield.

With the start of a new decade, Winchmore String Orchestra (WSO) has a new home for rehearsing and performing. This is Southgate Methodist Church in The Bourne,

where its next concert will be held on Saturday 21st March.

The orchestra was founded in 1991 by the late professional violinist and teacher, Stanley Lishak, and his viola-playing wife Bertha, who is now its president. It has a core membership of more than two dozen, most of whom live in Enfield and Barnet, though some come from as far afield as Croydon! Concerts are also boosted by

guest players.

Under the baton of conductor Michael Coleby since 2018, WSO normally gives three concerts a year, with a repertoire ranging from baroque, classical, romantic and 20th Century genres, to less familiar output, including occasional music by local composers. While the amount of music written specifically for string ensembles is modest compared to that for full orchestras,

there is a large body of works that have been adapted for them.

A string orchestra has a distinctive sonority. An audience member at one WSO concert said afterwards: "I thought this was a wonderful concert, and I certainly didn't miss the sound of wind or percussion."

At its March concert, WSO will play a Bach concerto for violin and oboe, a part of Tchaikovsky's *Serenade for Strings*, Mozart's graceful *Symphony No29*, and two quintessentially English works of the last century – Holst's *Brook Green Suite* and Rutter's *Suite for Strings*, inspired by folk tunes.

Like most amateur orchestras, WSO is funded by members' subscriptions and ticket sales, and though a registered charity, it raises funds for other charities through raffles held at its concerts. The beneficiaries are nominated by its soloists and range from well-known medical charities to local organisations; over the past ten years WSO has collected a total of around £14,000.

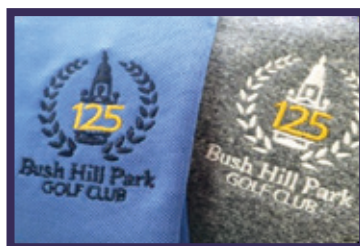
To buy tickets (£9 advance) for the Winchmore String Orchestra concert on Saturday 21st March, from 7.30pm at Southgate Methodist Church:

Call 020 8882 0351
Visit winchmorestrings.co.uk

Advertisement

JOIN NOW AND RECEIVE YOUR REWARDS

Bush Hill Park Golf Club

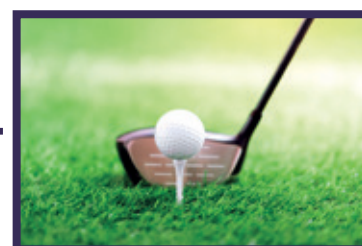


RECEIVE A 125TH ANNIVERSARY LOGO POLO & JUMPER*



One Free Month Golf Membership

+



One 1/2 Hour Session With Either Of Our PGA Professionals

+



2-Course Meal For Two At Our Friday Club Night Or Sunday Lunch

*When you join as a Full Member (age 31 and over) you'll receive a 125th Anniversary Glenmuir logo polo & jumper. When you join as a Lifestyle Member or a Full Member in the 24-30 age category you'll receive a 125th Anniversary Glenmuir logo polo.

bhpgc.com



@bushhillparkgc

Celebrating female composers

Enfield Choral Society's musical director Mark Sproson looks ahead to this month's concert in Winchmore Hill

Open a brochure for many a classical concert venue and you will struggle to find more than one or two female names. A few contemporary composers may feature, but the vast majority of pieces are likely to be by men.

On one level this is understandable; there are hardly any well-known works by female composers, and concert promoters have to programme familiar pieces to pull in the punters. But this is a chicken-and-egg situation – pieces by female composers aren't played because they're not well-known enough, but they'll never become well-known because they're never performed.

To try to break the cycle, this month Enfield Choral Society will be performing a concert entirely consisting of pieces by women. We have combed through music libraries and online resources to find pieces that deserve to be heard more often. One difficulty for amateur choirs is a lack of availability of scores, so we have printed copies for ourselves which will be made available to other choirs, hopefully encouraging further performances.

Some names will be familiar through their association with established composers. Fanny Mendelssohn, the older sister of composer Felix, was an accomplished pianist and composer, but was discouraged from pursuing a career as her brother's success grew. Nevertheless, she published numerous works throughout her life, mostly under her married name, Hensel. Clara Wieck had enjoyed similar success, but when she married

“We will be performing a concert entirely consisting of pieces by women”

Robert Schumann she almost completely gave up composing.

During the late 19th and early 20th centuries it became more accepted that women could follow musical careers. In the UK, Ethel Smyth was one of the first women to achieve real critical success, with concertos, choral works and operas regularly performed. Later in life, however, she became involved in the women's suffrage movement and set aside her musical career in favour of a political one. Our concert includes her

rousing anthem *March of the Women*. Born in the same year in France, Mélanie Bonis composed throughout a long life and was accepted by one of the leading music publishers.

Also in France, sisters Lili and Nadia Boulanger both pursued a musical education with great success. Sadly, Lili died at the age of 24, but not before winning the coveted 'Prix du Rome' composition prize. Her sister went on to be one of the most renowned teachers of composition, teaching many famous names such as Aaron Copland, Philip Glass, Astor Piazzola and Quincy Jones.

Today, women are increasingly playing major roles in music and our concert ends with works by two contemporary British composers, Janet Wheeler and Cecilia McDowall, to give an exciting and varied musical evening. Please join us in what we hope will be the first of many programmes featuring female composers.

To buy tickets (£12 in advance) for the Enfield Choral Society concert on Saturday 21st March, from 7.30pm at St Paul's Church, Church Hill, Winchmore Hill:
Call 07793 082 991
Visit enfieldchoralsociety.org.uk

Steal a March

Jo Johnson from Love Your Doorstep with some timely tips

At the time of writing this in February there are already daffodils popping up across the borough, adding a splash of colour that we've not been used to over the winter months.

At the end of March the clocks go forward, giving us longer daylight hours and beautiful early sunrises. Before that we have Mother's Day, on Sunday 22nd March. If you are looking for gift ideas, the Love Your Doorstep directory has lots to offer in terms of places or people you can purchase something from, be it flowers or unique gifts. Keep a look out for our Mother's Day blog, which will have a selection of ideas for you.

Spring cleaning is a hot topic at this time of year. There's something about this season which

motivates many of us to have a good old de-clutter and tidy up our homes. However, not all of us have the time or inclination to get on with the task ourselves. If this sounds like you, hop over to the Love Your Doorstep directory to find yourself a cleaner who can work their magic. You might even want to enlist the skills of one of our de-cluttering businesses, which will come and take over the job for you and help you to shift all of the stuff that no longer serves a purpose.

With the longer days and improved weather, we also begin to focus on our outdoor environment. If you have a garden or outdoor space it's probably been left untouched for the last five months. Suddenly, it becomes a priority again! If you want a gardener to

visit and assist with getting your garden ready for the new season we have some fabulous ones we can put you in touch with.

Not everyone has their own garden, so we are very fortunate to be surrounded by lots of parks and green spaces across the borough. Step outside and appreciate the flowers popping up and the beautiful blossom in the trees. One favourite yearly tradition in Enfield is the lambing weekend at Forty Hall Farm, taking place this year on Saturday 21st and Sunday 22nd March. During the course of the weekend visitors flock to the farm to welcome the new-born lambs. It's a sure sign that spring has officially sprung!

For more information:
Visit loveyourdoorstep.co.uk

LISTINGS

Submit your listing

We can include low-cost community events taking place in Enfield. For next month's listings, email the details of your event to enfielddispatch@socialspider.com by **Tuesday 17th March**.

TRAINING

Building Resilience in Children and Young People

Thursday 5th March, 9.45am-1pm
Community House, 311 Fore Street, Edmonton N9 0PZ

Enfield Voluntary Action is hosting a session with Sarah Berman from charity Young Minds, who will be discussing how to help build resilience in children and young people, focusing on how to cope and bounce back from traumatic events.

Free entry
Visit enfieldva.org.uk

POETRY

Enfield Poets

Saturday 7th March, 7.30pm
Dugdale Centre, 39 London Road, Enfield EN2 6DS

Poets from the floor plus guest poets Derek Adams and Penny Dopson. Derek is a professional photographer now living in Suffolk whose publications include Exposure. He was BBC Wildlife Poet of the Year in 2006. Penny from Hertford has just published her first collection, 'Dancing Against the Wind'.

Entry £3.50, concessions £2.50
Visit enfieldpoets.com

MUSIC

Lovers Rock Monologues

Wed 11th to Sat 14th March, 7.45pm
Millfield Theatre, Silver Street, Edmonton N18 1PJ

Be prepared for a night filled with laughter, good vibes and sensational live music. Starring the queens of lovers rock, Janet Kay and Carroll Thompson, plus the incomparable Victor Romero Evans. They will take you on a trip back to the bright colours of the late 1970s.

Tickets £26, concessions £22.50
Call 020 8807 6680
Visit millfieldtheatre.co.uk

Music From the Black Barn

Saturday 14th March, 7.30pm
Forty Hall Farm, Forty Hill, Enfield EN2 9HA

California Screaming are the latest act to perform at Enfield's most intimate monthly music venue. Back by popular demand, the band features some of the UK's most accomplished session musicians.

Tickets £10
Visit livestockuk.com

MUSICAL

Waiting for the Ship to Sail

Thurs 12th to Sat 28th March
Chickenshed Theatre, Chase Side, Cockfosters N14 4PE

We find ourselves in a world where the building of walls – both literally and figuratively – places ever more barriers between people who have more in common than it might at first appear. This powerful new musical and dance production will offer new perspectives on the forces driving migration.

Tickets from £5-£20
Call 020 8292 9222
Email bookings@chickenshed.org.uk

TALK

Planning for Later Life

Friday 13th March, 2-4pm
North London Wellbeing Centre, 110 Barrowell Green N21 3AY

Planning for the future can provide peace of mind and security. As part of Enfield Connections, Age UK Enfield are offering free 'Planning for Later Life' sessions for people aged 50+ and their carers. The session covers wills, power of attorney and bereavement services.

Free, booking required
Call 020 8375 4120

BOOKS

Evening with Ben Aaronovitch

Tuesday 24th March, 6.30pm
Enfield Town Library, 66 Church Street, Enfield EN1 6AX

The celebrated author of 'Rivers of London', Ben Aaronovitch, will be visiting Enfield Town Library for a Q&A and book signing. A huge advocate of public libraries, Ben will be speaking about his new novel, 'False Values'.

Free entry
Visit new.enfield.gov.uk

GAMES

Board Games Club

Tuesdays, 3pm-4.30pm
Enfield Town Library, 66 Church Street, Enfield EN1 6AX

Join us for an afternoon of relaxed board game fun every Tuesday. Along with classic board games, we have chess, cards and dominos. Refreshments are also served.

Free entry
Call 020 8379 8341

AROUND THE BOROUGH

ARNOS GROVE

Kids help run community café



The West Lea School pupils are gaining work experience at Palmers Greenery. The pupils from a special needs school are helping to run a café in Broomfield Park.

munity Café every Tuesday as part of a partnership enabling the café to open an extra day each week, while pupils gain work experience.

One student said: “I like working at the café because it is challenging but not too hard. We get to meet new people and sometimes we get to eat cake, which is great!

“I love serving customers and getting to know them. My favourite thing to do is make hot chocolates.”

Palmers Greenery is a not-for-profit business run by volunteers. Surplus income is reinvested back into the park and related projects. Co-founder Sarah Cotton said: “We are delighted we’ve been able to build a partnership with West Lea that brings such great benefits to both parties.”

PALMERS GREEN

Fire safety fine

MANAGEMENT COMPANY HARPER Stone Properties Ltd has admitted to fire safety failings following a blaze at a block of flats in Green Lanes.

The company was fined £20,000

and ordered to pay £10,000 costs at Westminster Magistrates’ Court last month. The August 2016 fire broke out in the common stairwell of a four-storey block and spread to the third floor, preventing res-

idents from leaving via the main stairs. While the premises had an external metal staircase to the rear, not all flats had access to it.

Several people had to be rescued by firefighters but no-one was hurt.

EDMONTON GREEN

Go-ahead for estate revamp

BY SIMON ALLIN, LOCAL DEMOCRACY REPORTER

HUNDREDS OF JOBS COULD BE created in one of the most deprived parts of the borough thanks to an industrial estate redevelopment.

A £94million revamp of Montagu Industrial Estate will provide modern, energy-efficient buildings for a range of businesses. The scheme is expected to create around 630 jobs, and is also aimed at cutting crime and improving the public realm.

In a report Enfield Council says the 11-hectare estate is “occupied by largely poor industrial buildings” – some dating back to the 1950s

– and suffers from congestion. It states there has been “significant anti-social behaviour and illegal and unauthorised activity” on the estate, which has had an impact on surrounding residential areas.

The redevelopment project was originally approved by the council’s cabinet in 2016. Since then, planning permission has been granted for phase one of the development, which will provide eight warehouse units with associated offices. Work is due to begin in spring.

The council will partner with Henry Boot Developments in a 50/50 joint venture to redevelop

the site. The scheme is expected to boost the council’s rental income to £4.4m per year in the long term – up from the current yearly figure of £1.2m.



HIGHLANDS

Extra flats plan rejected

BY SIMON ALLIN, LOCAL DEMOCRACY REPORTER

PEOPLE LIVING IN A BLOCK OF flats hit out at plans to build extra floors on top of their properties.

Residents of Avalon Close in Highlands warned the scheme – designed to create eight more flats – would affect their privacy, light and outlook, as well as put their health and wellbeing at risk.

Officers from Enfield Council had recommended approving planning permission for the plans submitted by Ozcan Hassan to add a part-third, part-fourth floor to the existing blocks. They said the council had already approved a similar scheme at nearby Hansart Way, so it would be hard to justify turning down this one down.

However, last month planning committee members rejected the plans after hearing objections from neighbours who stood to be affected by the scheme. Avalon Close resident Jo Ker-

not told councillors: “The submitted plans will result in the removal of our bathroom windows and increased noise from new neighbours alongside and above our properties.

“How would you feel if someone decided they would build on top of your home and all around it, removing your view, privacy, quiet, light – even your bathroom window?”

Another resident, Sally Mantell, said: “Residents are seriously worried about any increase in service charges resulting from additional maintenance costs.

“Can the council, in all conscience, price people out of their own homes?”

The application was referred to the planning committee by Highlands ward’s Conservative councillors Joanne Laban, Lee David-Sanders and Glynis Vince. Committee member Mike Rye agreed with the objections and said: “It is essentially just trying to cash in and create some extra units to make some profit.”

WINCHMORE HILL

Burglary hotspot

THE N21 POSTCODE AREA HAS one of the highest burglary rates in the UK, according to new data on insurance claims.

Research from Money Supermarket put N21 fourth on a list of postcodes based on how many households had made claims following a burglary. The rate for

N21 over the last year was 50.13 burglary claims per 1,000 home insurance payouts, compared to the UK average of 16.04. It was the highest rate in London.

One explanation could be the large proportion of houses in the area, which are said to be 70% more likely to be burgled than flats.

ANGEL EDMONTON

Funding bid

ENFIELD COUNCIL HAS SUBMITTED a funding bid to Transport for London for the transformation of Angel Edmonton’s street scene.

The ‘Liveable Neighbourhood’ scheme allows local authorities to draw up plans for improving town centres. There have been calls for investment in the area around Silver

Street Station, the North Circular, and Fore Street, with concerns about pedestrian safety, anti-social behaviour and air pollution.

Ideas include a new pedestrian crossing near the railway station, extending cycle lanes, better street lighting, CCTV, ‘quietways’ and traffic calming measures.

Enfield Town's community goals

Andrew Warshaw on how charity status is helping the football club's community arm do more locally

Enfield Town FC has broken significant new ground by separating out its community work from the running of the football club.

An independent company – Enfield Town FC Community Sports Development – was established in 2017. It has now been granted charity status, enabling it to apply for various types of grants and funding.

In recent years, thanks to the efforts of the football club's board of directors and a string of volunteers, the club has slowly but surely built up its community role, in line with its vision of being an inclusive club for all and a football and social centre for the community.

A series of events are now planned, including a fundraising dinner. Enfield Town vice-chairman Paul Millington believes the charity will have a big impact on the lives of young people living in Enfield. Until now, the club pretty much had to fund coaching sessions by itself, with the help of a couple of generous local benefactors. But they have wanted to do far more – and now they can.



Enfield Town FC's community development work is now run by a registered charity

“Here at Enfield Town we have always wanted to do more than just pay lip service to saying that we are a community club,” Paul told the *Dispatch*. “We found that the key to doing that was becoming a charity.

“There have been many hoops to go through. For instance, we had to satisfy the Charity Commission that the money raised goes to various charitable causes – in our case sporting activities for the

residents of Enfield.

“We have to abide by a strict set of rules in terms of how we use our money. The process took almost a year but the perseverance has paid off.

“It’s a significant move for us. We’ve always prided ourselves on being owned by our supporters but this takes us to the next level, helping those who are disadvantaged, either mentally or physically.”

It will also, crucially, have the effect of attracting funds from organisations who would be more likely to donate to a registered charity. Already the club is considering asking top-flight clubs across the country to donate signed shirts.

“The first question we get asked is what is our charitable registration number,” explained Paul. “As soon as you give that, it makes a difference. The benefits are huge.”

Having a charity arm is reasonably common at professional clubs, but not necessarily at non-league level. One immediate knock-on effect could be to assist funding the club’s disability squad to take part in a tournament in May. It is being held in Gladbach – which happens to be twinned with Enfield.

Paul adds: “We are looking to raise £3,000 and are just now kicking off that appeal.”

Advertisement

Enfield's award-winning Bush Hill Park Golf Club

Having recently won the Golf Club of the Year 2019 award and been ranked in the Top 5 of the County by The Top 100 Golf Courses of the World, Bush Hill Park Golf Club is celebrating their 125th anniversary this year and there has never been a better time to be a member of Enfield's finest Club.

The Club boasts a vibrant and inclusive membership made up of golfers of all abilities and a large social membership with a healthy mix of age and gender.

The Club has made huge progress in recent years including investments in a state-of-the-art Rain Bird irrigation system and ongoing improvements to their greens and bunkers which are part of the Club's commitment to providing a challenging yet rewarding golfing experience.

Lined with pine, silver birch and emblematic horse chestnut

tree, the 18-Hole course is set in over 100 acres of parkland and was designed by renowned golf course architects Harry Vardon and James Braid. They were two of the greatest golfers in the history of the game winning 11 Open Championships between them. The course is not long but is tight and provides an enjoyable challenge in stunning scenery and tranquil surroundings and is a true test for golfers of all abilities.

Bush Hill Park Golf Club is a proud member of The 1895 Club and of The James Braid Association, giving members preferential access to play on partner courses all over the UK and the world.

When you drive through the gated entrance, along the long drive that leads to their historic clubhouse, you'll understand why Bush Hill Park Golf Club is an impressive place. The clubhouse provides a stunning venue for all



occasions, with function rooms of various sizes, three bars and a restaurant. There is a large patio at the front of the building,

overlooking the 18th green, and a veranda at the rear overlooking the first tee, both of which provide great places to sit outside

with a drink in the sunshine, and make the club the perfect place to spend time, whether or not you're playing golf.



FOR ENQUIRIES: Tel 020 3146 9890 Email enquiries@bhpgc.com

Support independent local journalism

What we do

Here at *Enfield Dispatch* we do things differently. We combine professional journalism with voluntary contributions from people who live and work in the borough and create content which is responsive to and reflective of the community.

These are challenging times for print media with many newspapers closing and advertising revenue in decline, but our not-for-profit model offers a new approach to creating local journalism which is inclusive and accountable.

How you can help

As a not-for-profit publication we rely on the generous support of our community. We look to our readers, who recognise the value of independent journalism, to help support us.

You can do this by becoming a member either as an individual or as an organisation. See the rewards opposite and once you've decided what package you would like, visit our website:

enfielddispatch.co.uk/join

Individual rewards

£3 per month upwards:

Name in print and online, pin badge

£5 per month upwards:

Name in print and online, pin badge, tote bag, paper posted to you every month

Organisational rewards

£10 per month:

Name in print and online, 10% discount on advertising

£20 per month:

Name and logo in print and online, 20% discount on advertising

£50 per month:

Name and logo in print and online, 40% discount, six free small adverts per year

Current members

Derek Grant, Michael Dickinson, Michael Cole, Young Notes, Ed Balleny, Natasha Boydell, Elizabeth Crosthwait, Richard Stones, Philip Ridley, Suzanne Beard, Chris Kaufman, Martyn Stogden, Susan Cook, Rupert Price, Meryn Cutler, Andrew Irvine, Basil Clarke, John Naughton, Right at Home Enfield, MumSing Choir, Penelope Williams, Lloyd Tew-Cragg, Andrew Warshaw, Anna Crowley, Neil Churchill, Karl Brown, Anthony Fisher, Dan Wright, Residents of Edmonton Green, Kay Heather, Julia Mountain, Excellence in Learning Community, Jerome O'Callaghan, Carole Stanley, Mervyn Maggs, Aditya Chakraborty, Norman Bennett, Vivien Giladi, Greg Andrews, The Old Enfield Charitable Trust, Matt Burn, Enfield URCs, Martin Russo, Marilyn Hamilton, Laura Davenport, Ed Poole, Mick Wood, Helen Osman, Ranvir Mallick, Enfield Over 50s Forum, Francis Sealey, Caroline Banks, W A Linton, Joe Hickey, Irene Richards, William Yates, Peter Mitterbach, Gianni Sarra, Tracy Hughes, Kristiana Heapy.

Member organisations



touching hearts, changing lives
Slimming World Enfield and Tottenham