

ENFIELD DISPATCH

Nº. 19 THE BOROUGH'S FREE COMMUNITY NEWSPAPER

APR 2020

FEATURES

How Enfield Stand Up To Racism is tackling discrimination

P. 7

COMMENT

Why council's Dugdale decision would be 'devastating'

P. 8

HEALTH

Where to get help and advice on Covid-19

P. 10



Edmonton-based charity The Felix Project, which delivers surplus food to impoverished families, is recruiting extra volunteers to cope with demand during the pandemic. Sign up at thefelixproject.org/help-us/how-can-i-help or call 020 3034 4350

Residents rally to help virus victims

BY JAMES CRACKNELL

Local residents, businesses, charities and civic groups are teaming up to help support victims of the Covid-19 pandemic in Enfield.

Mutual aid groups are providing assistance for families forced to self-isolate at home, while Enfield Council has brought local voluntary groups together to offer help for residents impacted by the coronavirus crisis.

North Middlesex University Hospital in Edmonton had to rapidly adapt its emergency department to treat an influx of Covid-19 patients. One doctor took to Twitter to appeal for more furniture – receiving a flurry of donations within hours. Nearby Millfield Theatre also offered its car park for NHS staff to use for free.

As the government told people to avoid unnecessary social contact and advised vulnerable groups to stay at home, on Facebook residents set up a page where communities could organise their own support networks. Adam McGibbon helped establish a mutual aid group for Enfield Island Village and told the *Dispatch*: “We are putting leaflets through doors and giving people contact details if they need support. We want to take the burden off the authorities. Neighbours are in the best position to provide immediate help.”

Most council meetings have been postponed, but the local authority is continuing to provide essential services and support even while many of its staff are forced to work from home. Together with Enfield Voluntary Action it launched a scheme called 'Enfield Stands

Together' to unite NHS partners, Enfield Carers Centre, Age UK and Citizens Advice Enfield.

Council leader Nesil Caliskan announced that £100,000 had been made available for “community resilience” efforts. She said: “We know this is an extremely anxious time. We are heartened that our community in Enfield is already pulling together and we will con-

“It's all hands on deck across the borough”

tinue to work with residents and community organisations to build more resilience and be prepared.”

Demand for household goods has more than doubled in recent weeks,

with stockpiling leading to empty shelves at supermarkets – despite reassurances that such supplies are unaffected. Local businesses have stepped in to help. Wholesaler JJ Foodservice, based at Innova Business Park in Enfield Lock, is now offering a home delivery service for the borough (customers can order online at jjfoodservice.com). Chief operating officer Mushtaque Ahmed said: “With schools closing and many of us working from home, essential products have never been more important. We are here to help.”

Love Your Doorstep (LYDS) has made its own action plan, working with more than 30 community organisations, including The Felix Project which supplies food to impoverished families from its base in Edmonton. Emma Rigby from LYDS said: “It's all hands on deck across the borough – working with so many of our amazing local charities.”

Get the latest advice from Enfield Council, register for help, or fill in a business impact monitoring form:

Visit enfield.gov.uk/covid19

Find a mutual aid group in your area:

Visit [facebook.com/groups/221075632630141](https://www.facebook.com/groups/221075632630141)



enfelddispatch.co.uk

@EnfieldDispatch

enfelddispatch@socialspider.com



The Dispatch is supported by Chamberlains Estates – turn to page 5



ED.

Nº.19

APR 2020

Enfield Dispatch is the borough's free community newspaper. We publish monthly and distribute 10,000 free copies of each issue – and we will continue to do so during the ongoing public health crisis.

Publisher
David Floyd

Editor
James Cracknell

Designer
Jonathan Duncan

Head of Advertising
Klaudia Kiss

Head of Operations
Paige Ballmi

Engagement Manager
Penny Dampier

Contributors
Simon Allin, Lynda Brennan, Christina Davis, Martin Dearne, Bernie Lappage, John McDonough, Emma Friddin, Jo Johnson, Hannah Dyson, Carole Kuhuma, Alan Collingbourne, Robert Taylor, Andrew Warshaw

CONTACT

Call 020 8521 7956

Email EnfieldDispatch@socialspider.com

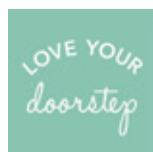
Post Salisbury House, Bury Street West, Enfield N9 9LA

ADVERTISING

Contact Klaudia Kiss:

Call 020 8521 7956

Email klaudia@socialspider.com



We are grateful to Love Your Doorstep for their ongoing support



Enfield Dispatch is a member of IMPRESS: The Independent Monitor of The Press. For more information on the Dispatch's complaints policy and how to make a complaint visit: enfielddispatch.co.uk/complaints

Bullying claims against former council deputy

BY SIMON ALLIN,
LOCAL DEMOCRACY REPORTER

A former deputy leader of Enfield Council has become the second elected official in under a year to face accusations of bullying.

Daniel Anderson, a Labour councillor for Southgate Green, could be banned from council offices for two months after four members of staff complained about his behaviour. In a letter seen by the Local Democracy Reporting Service, the council's monitoring officer ruled that Cllr Anderson had breached the code of conduct and bullied officers.

Cllr Anderson – deputy leader from May 2018 to May 2019 – has denied the allegations and said he would appeal against the decision. The monitoring officer's letter details claims by three unnamed council officers that he engaged in "threatening and uncontrolled" behaviour. All three said he called them "idiots" while two of them claimed he threatened their jobs. A fourth officer, whose case is detailed separately, claimed Cllr

Anderson "lost his temper and threatened him by stating that he 'would cut his f***ing balls off' and that he would be sacked".

According to the investigating officer, all four complainants said Cllr Anderson's behaviour "crossed a line from robust and challenging to aggressive and threatening". The monitoring officer states Cllr Anderson "failed to treat officers with respect on several occasions", breaching two parts of the code of conduct. His letter also states that on several occasions Cllr Anderson's behaviour "amounted to bullying of officers" – breaching another section of the code of conduct.

Cllr Anderson has been told to issue a written apology, promise not to repeat the behaviour, and could also be banned from council offices for two months, pending the outcome of an appeal.

Last year council leader Nesil Caliskan was also found to have broken the code of conduct by bullying a colleague – in her case a fellow councillor. Commenting on the current case, Cllr Caliskan said: "It is utterly unacceptable that any council officer has had



Cllr Daniel Anderson

to endure such experiences.

"We must ensure that anyone who is threatening and abusive to our hard-working council officers takes full responsibility for their actions."

Cllr Anderson denies the allegations and has vowed to appeal the decision. He said: "Completely unsubstantiated and often libellous allegations against me have been accepted as a given, while internal guidelines, procedures and protocols under which I have been investigated have been breached.

"Throughout my time as a councillor, I have always sought to put residents' concerns at the very heart of the decision-making process and will continue to do so. I will not be silenced, and the truth will come out."

Campaign against incinerator

BY SIMON ALLIN,
LOCAL DEMOCRACY REPORTER

Campaigners have called for a halt to construction of Edmonton incinerator and urged authorities to consider greener alternatives.

Extinction Rebellion has written to more than 400 councillors across North London, calling for a rethink of the £1.2billion waste-burning plant. As well as Enfield Council, Barnet, Haringey, Waltham Forest, Camden, Hackney and Islington councils are involved in the project. Together with a new recycling centre, the energy-from-waste facility will process up to 700,000 tonnes of waste a year, at peak capacity, by 2051. Construction is due to start in 2022.

North London Waste Authority (NLWA), formed by the seven councils involved in the scheme, says the plant will emit fewer

carbon emissions compared to landfill sites, while generating electricity and heat for up to 127,000 homes. But Extinction Rebellion's letter calls for the project to be paused while an independent review is carried out to look at more environmentally-friendly alternatives. Citing growing public and political opposition to waste incineration, the campaign group has set a deadline of 20th May for councillors to act.

Extinction Rebellion claims the waste-burning plant will pump out around 700,000 tonnes of carbon dioxide a year – equal to 10% of North London's total emissions. There are also concerns over air quality, with the current incinerator emitting more than a tonne of particulate matter 2.5 – which has been linked to heart and lung problems – in 2018. The group wants an independent assessment of the scheme to consider its impact on various envi-

ronmental targets. Alternatives proposed include 'distributed modular gasification' – which turns plastics into electricity.

Responding to the campaigners' demands, a NLWA spokesperson said: "We share the strength of feeling about the need to combat climate change. As a waste authority, our greatest priority is to tackle the climate emergency and preserve resources for future generations. We're acting now to reduce waste, increase recycling rates, and treat non-recyclable waste as a resource.

"The current energy-from-waste plant at Edmonton EcoPark is coming to the end of its life. Our project to replace it is the most effective and sustainable solution to managing the waste left over after recycling.

"Pausing our plans would be irresponsible, risking up to 700,000 tonnes of non-recyclable waste going to landfill in future."

FGM campaign

An outreach programme has been launched to highlight the mental and physical impact of female genital mutilation (FGM).

Thousands of women living in Enfield are affected by FGM, according to Enfield Council's public health team. The first community event was held at Edmonton Green Shopping Centre and was hosted by Alimatu Dimonekene, a prominent FGM campaigner and survivor who lives locally.

Mahtab Uddin, cabinet member for public health, said: "A substantial number of women living in Enfield have been affected by FGM. Large numbers of girls in Enfield may also be at risk because they have been born into communities where it is more likely to be practised.

"FGM must be confronted – it can no longer be seen as a problem for other countries far away to deal with."

The Iris Clinic at North Middlesex Hospital specifically provides care and support for victims of FGM – in 2018/19 more than 120 people attended the clinic.

Scrutiny fears

BY SIMON ALLIN,
LOCAL DEMOCRACY REPORTER

Residents should be "very concerned" about a cut to the number of questions that can be asked at full Enfield Council meetings, according to the opposition group leader.

Under previous rules, each political party could table 20 questions at full council meetings, but a change to the council constitution means only 15 questions per party will be allowed at future meetings. Conservative group leader Joanne Laban said councillors often ask questions on behalf of residents when they have been unable to get a direct response from officers. She said: "It is an important part of scrutiny. You don't get Prime Minister's Questions being axed... I think people should be very concerned about what is happening at the council."

Council leader Nesil Caliskan said: "There are a number of ways elected members hold the administration to account, including committee meetings. The only thing 'cut to the bone' at Enfield Council is our budget from the Conservative government."

Advertisement



ENFIELD BRANCH PUBLIC ANNOUNCEMENT ABOUT HOME DELIVERIES

ORDER ONLINE UP TO **9**pm
AND GET YOUR DELIVERY THE **NEXT DAY!***

MONDAY TO FRIDAY | MINIMUM ORDER OF ONLY £79

*Area coverage and the minimum delivery amount may vary depending on your location

ALTERNATIVELY COLLECT SAME DAY FROM A BRANCH



www.jjfoodservice.com | 01992 701 701

JJ Foodservice, 7 Solar Way, Innova Park, Enfield EN3 7XY

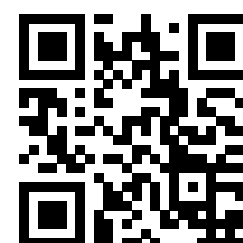


We are now offering a NEW Next Day Home delivery service offering key household essentials like bottled water and fresh and frozen foods.

Online orders placed by 9pm will be delivered the next day with a minimum order of just £79.

Open a free account at:
jjfoodservice.com

or scan here:



Huge homes plan includes Enfield's tallest tower

Developer submits plans for 1,800 homes on site of B&Q



Vision of how the redevelopment of Colosseum Retail Park will look once complete

BY JAMES CRACKNELL

Plans are being submitted for a mammoth redevelopment scheme that would replace an “ageing” retail park with 1,800 homes.

If the planning application is approved by Enfield Council, it would see the tallest building in the borough constructed on a site currently occupied by B&Q, Dunelm and Gala Bingo. Four tower blocks of 29, 24, 18 and 16 storeys respectively are being proposed by a partnership between London developer NEAT and American investment firm Blackrock, which owns Colosseum Retail Park on the corner of Great Cambridge Road and Southbury Road.

The hybrid planning application includes 444 new homes in the first phase with the ability, subject to further applications, to provide up to 1,356 homes in later phases. Of the total new homes, 35% would be classified 'affordable', including both shared ownership and rental properties. In addition, the proposals will deliver a work hub, new shops, cafes, space for a crèche and doctor's surgery, and two new parks. The development is expected to support at least 325 permanent jobs.

Paul Ward, from NEAT Developments, said: “We are delighted to have submitted plans for Colosseum Retail Park. We have a truly unique opportunity to create a new neighbourhood in Enfield, which will deliver new homes, affordable housing, jobs, and new commercial and retail spaces.

“Our plans will deliver a truly new offering to Enfield, from space for independent retailers, to events space and flexible workspace. Throughout the whole process, we have sought to work with local people, politicians and community groups to formulate a proposal which delivers an exciting place for Enfield.”

Built in 1996, Colosseum is one of a number of retail parks in the area that have struggled to compete with the rise of online shopping. As the borough needs to build hundreds of new homes every year to meet targets set by City Hall, the area around Southbury Station has been earmarked by Enfield Council for potential housing growth.

NEAT claims the scheme has been “carefully designed” to “reflect the eclectic mixture of buildings already found across Enfield”. Hundreds of residents attended a series of public consultation events after the plans were first announced in 2018, with some expressing concerns at the impact of the development's height and the increasing pressure placed on public services and transport links; nearby Southbury Station is currently served by two trains per hour. Enfield Town Residents' Association has also previously stated its opposition to the scheme.

If approved by the council's planning committee, construction will begin in 2022.

Electoral map redrawn

BY SIMON ALLIN,
LOCAL DEMOCRACY REPORTER

The electoral map of Enfield is set to be redrawn, aiming to ensure local politics remains representative as the borough's population continues to grow.

Following three rounds of public consultation, a review by The Local Government Boundary Commission for England has proposed the creation of four new electoral wards, taking the borough's total to 25.

Under the plans, still subject to government approval, Enfield will still have 63 councillors – but some would have only two elected representatives rather than three, as at present. All current ward boundaries would change to some greater or lesser extent, with some also being renamed. New wards include 'Whitewebbs' and 'Ridgeway', replacing what is currently Chase ward. A 'Highfield' ward would be created to the east of Palmers Green, Southgate Green would be replaced by new wards 'Arnos Grove' and 'New Southgate', while 'Carterhatch', 'Brimdown' and 'Bulls-moor' would replace Turkey Street and Enfield Highway wards. An 'Oakwood' ward would also be created.

The changes are designed to ensure the number of voters represented by each councillor is roughly the same across the borough, while maintaining community identities. Twelve wards – Arnos Grove, Bowes, Bulls-moor, Carterhatch, Cockfosters, Grange Park, Highfield, New Southgate, Oakwood, Palmers Green, Ponders End and Winchmore Hill – would be represented by two councillors instead of three.

If the changes are approved by MPs, they will come into force from 2022. Professor Colin Mellors, chairman of the commission, said: “We are extremely grateful to people across Enfield who took part in the review. The commission has looked at all the evidence that was put forward during the consultation.

“We believe these recommendations deliver electoral fairness for voters as well as reflecting community ties throughout Enfield.”

Council leader Nesil Caliskan said: “Labour group made a submission to the boundary commission a few months ago. The new proposals have, in part, taken on board our suggestions. Ultimately, it doesn't matter what the boundaries are – Labour candidates will always fight for every vote, and Labour councillors will always represent all residents in their wards.”

The Conservative group was approached for comment.

Advertisement

There is a smarter way to EMBRACE YOUR RETIREMENT

Are you close to retirement? Then you have one more big decision to make - how to draw down your pension and get it working best for the lifestyle you want.

There are a few options to consider, do I take out a lump sum? Invest some of it? Or get an income for life?

At Archers, we have over 25 years of expertise to help you find a plan that best suits your needs.

So, no matter who your pension is with, contact us about your retirement planning with Archers - it's a smart way to make the most of what you have and fully embrace your retirement.

For more information on any other matter contact Archers on:

020 8364 5445 / 020 8364 6099
or email: info@archersonline.co.uk

Archers
Financial Services Ltd

Archers Financial Services Ltd, 1 Windmill Hill, Enfield, Middlesex EN2 6SE
Tel: 020 8364 5445 / 020 8364 6099 • Email: info@archersonline.co.uk • www.archersonline.co.uk

Archers Financial Services Ltd is directly authorised and regulated by the Financial Conduct Authority (FCA: 650075). Your home may be repossessed if you do not keep up repayments on a mortgage or any other debt secured on it. Investments can be made into a selection of funds which invest in different asset classes such as cash, gilts, property and stocks & shares. These funds carry differing levels of risk. The value of the funds can fluctuate and may fall as well as rise. The Financial Conduct Authority does not regulate taxation and tax advice.

Chamberlains Estates

Residential Sales & Lettings Agents

020 8366 3551

chamberlainsestates.com

FOR SALE



Ground Floor One Bedroom Retirement Apartment – EPC C69
Bycullah Road, Enfield EN2 **£170,000 Leasehold**

FOR SALE



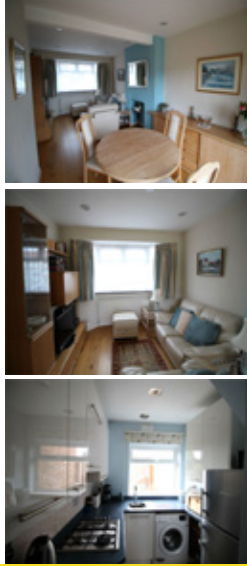
A Well Presented Two Bedroom Ground Floor Apartment – EPC D65
Waverley Court, Windmill Hill, Enfield EN2 **£340,000 Leasehold**

FOR SALE



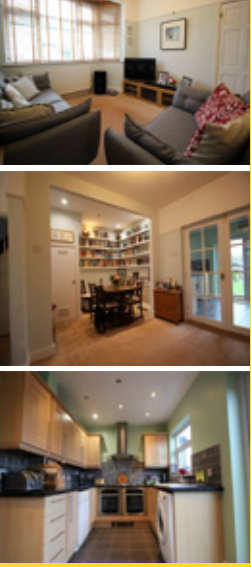
Two Double Bedroom Ground Floor Apartment – EPC C75
Chase Court Gardens, Enfield EN2 **£340,000 Share Of Freehold**

FOR SALE



A Well Presented Three Bedroom Terraced House – EPC D68
Baker Street, Enfield EN1 **£450,000 Freehold**

FOR SALE



A Well Presented Extended Four Bedroom Family House – EPC D61
Carisbrook Close, Enfield EN1 **£600,000 Freehold**

FOR SALE



Semi Detached House With Spacious Accommodation – EPC D65
Chase Side, Enfield EN2 **£624,999 Freehold**



Glenn Heinzel is manager of Beerblefish Brewing Company in Edmonton

Honing their craft

James Cracknell meets the people behind Enfield's burgeoning craft beer industry

Craft beer has been one of London's big economic success stories over recent years, with several brands now calling Enfield home.

On the borough's industrious east side, breweries both large and small sit alongside distribution warehouses, building yards and recycling centres. Some are locally owned and have been rooted in Enfield since they began, while others have moved from elsewhere as they seek space to grow.

Camden Town Brewery started under railway arches in 2010, but after gaining a big following looked to Enfield for space to build a much larger facility. Camden Town's brewery in Ponders End, on the banks of the River Lea, opened in 2017. Beavertown Brewery – makers of craft beer favourites Neck Oil and Gamma Ray – is the latest to arrive in the borough. Now part-owned by Heineken, the company will soon open its new £40m facility in Brimsdown, providing 150 jobs.

While both these breweries are unrecognisable from their origins as small-scale independent businesses, Enfield is also home to craft beer producers that have retained their unique character.

Beerblefish Brewing Company operates from Georgiou Business Park in Edmonton. Established in 2015 by James and Bethany Atherton, it produces a range of award-winning heritage beers based on

old recipes, such as 1892 IPA and 1920 Porter, as well as more contemporary offerings such as the fruity Pan-Galactic Pale Ale and “wine like” Cashmere Brut IPA. They've also recently produced their own gin flavoured with wild hops grown in Walthamstow.

James and Bethany still work their day jobs in the City, so most brewing is left in the capable hands of Glenn Heinzel. Showing the *Dispatch* around the modestly-sized brewery, Glenn said: “We have got a solid base and are looking to grow from here – in 14 months our lease runs out and we need to move somewhere bigger. We would love to stay in the area.

“At the moment our core focus is the independent market. One of our best customers is Little Green Dragon [in Winchmore Hill]. We also sell to Holtwhites Bakery [in Enfield Chase]. We are happy to look at other opportunities but we want to support the people who support us – micro-pubs, independent shops.”

The Beerblefish slogan is “brewed for good” – evidenced by its products all being vegan-friendly and by the support the company has provided for charities such as Crisis, supplying beers at fundraising events. Every last Saturday of the month, Beerblefish opens up its Edmonton brewery for local people to enjoy a glass or three. “It's a nice little community,” says Glenn.

A short walk away is another craft beer

company, famous for being the only brewery inside the M25 to source water from its own bore hole. Enfield Brewery looks huge from the outside, but is currently only operating at 15% of capacity. Owner Rahul Mulchandani's family run an adjacent cash-and-carry business, and he spent many years buying in craft beers before

deciding to set up his own firm in 2014.

“I noticed a lot of brewers were having issues with packaging,” Rahul told the *Dispatch*. “They were sending their beers up to Cumbria to be bottled but they were picking up bugs and being left on hot lorries. We initially wanted to set up a bottling business, but one company came to us and said we needed to be brewing as well to make it work.”

Under the brand 'Enefeld' – inspired by Enfield's Anglo-Saxon spelling – the brewery produces a 'London' range of beers that includes a pale ale, IPA, pilsner and porter. After initially struggling to create the high-end product he was aiming for, Rahul hired one of the world's most experienced brewers to help boost Enefeld's reputation.

“Don [Burgess] was travelling the world as a beer judge. We told him we were having an issue with quality and consistency – he decided to come here as a consultant for a bit and then decided to stay because he enjoyed it so much.”

As head brewer, Don added to the brewery's range, resurrecting a recipe he initially developed some 40 years earlier to create Enefeld's popular Speculation Ale. All its beers were soon getting better reviews online and now the firm is supplying dozens of upmarket restaurants, in places such as Mayfair. “We haven't got a budget for advertising and we rely on word of mouth,” says Rahul. “Our main drinkers are people who want a beer to unwind. We don't have a cult following – but I'm proud of our product.”

Rahul hints at a new “exciting” beer now in development, but adds: “I'm not allowed to talk about it.”

Little Green Dragon in Winchmore Hill is now operating a beer delivery and takeaway service, including Enefeld and Beerblefish ales:

Call 020 8351 3530 (between 3pm–4pm)
Visit littlegreendragonenfield.com



Rahul Mulchandani, owner of Enfield Brewery, makers of Enefeld beer

Fighting racism in Enfield

Lynda Brennan from Enfield Stand Up To Racism on the group's efforts to oppose racial discrimination in the borough and beyond



Activists from Enfield Stand Up To Racism attend a rally in support of the Stanstead 16, a group that blocked a deportation flight

The fast growth of Enfield Stand Up To Racism (ESUTR) is a response to the sharp rise of racism and fascism in the UK, Europe and across the world.

ESUTR joins with anti-racists from different local organisations and faiths in helping to build this national mass movement. As racist attacks increase everywhere, it is more important than ever that we have a visible and active local campaign group to help resist it. Only when we are ready to stand up together can we fight racism, xenophobia and the far right wherever we find it.

We regularly hold large, popular and inclusive meetings across the borough. We give a platform to different communities to speak up. We are growing our links with community groups and organisations including Edmonton Islamic Centre, British Alevi Centre, the Dugdale Centre, United Reformed Church, Broomfield Festival, and Stage Cafe in Palmers Green.

We have held a number of vigils to mark the tragic loss of life in terror attacks by the far right, wherever they have taken place.

Local Labour MPs Kate Osamor and Bambos Charalambous, plus local councillors and activists, have been among the guest speakers at our meetings. We have had wide-ranging discussions, covering black

and minority ethnic (BAME) exclusion, rights for European Union nationals, anti-Semitism, xenophobia, the refugee crisis, the climate emergency, institutional racism, and culture – to name a few! We also host regular stalls where we get people to sign petitions and get involved.

We have been especially active in our work with refugees and we organise solidarity visits with the charity Care4Calais. ESUTR's recent 'Refugees Are Welcome Here' fund-raising gig at the Dugdale Centre included many inspirational speakers, such as Rabbi Herschel Gluck talking about the Kindertransport, a young refugee from Pakistan, plus local poets and singers.

We had been planning a large contingent to join in with an international anti-racism demonstration on Saturday 21st March, but this was postponed because of the coronavirus pandemic. Please be assured, however, that we have not gone away!

The Tory austerity agenda has directed blame for poverty and cuts towards refugees and migrants, while encouraging further division in our society – join ESUTR and you can be part of the resistance. Join us, and you can help build a strong anti-racist movement in Enfield.

For more information about Enfield Stand Up To Racism:
Email lyndabrennan18@gmail.com

Focus on Fore Street prostitution

Metropolitan Police volunteer Christina Davis talks to the sergeant leading a new operation tackling sex work in Edmonton

Acting police sergeants Eren Emin and Nicolas Harpas are leading an ongoing operation to tackle the prostitution that has recently resurfaced along Fore Street in Edmonton.

I sat down to talk to Sgt Emin about the different ways the police can tackle an issue which has so negatively affected residents in the area. He began by telling me exactly where and what the problem is.

Sgt Emin said: "From the A406 in Fore Street up to the Tottenham Hotspur Stadium, every junction and every side street gets used by the sex workers and their clients."

"So we get two types of complaints, there are the residents who have to put up with people actually having sex in their doorways or gardens, leaving used condoms behind. And because it is such a transport hub too there are women who are just making their way home from work in the evening who get propositioned and asked for sex by men."

Sgt Emin explained that the problem first became acute in 2016, but after a targeted six-month campaign the sex workers dispersed. They resurfaced again in late 2019 – and this time in greater numbers.

"Before we had ten to 15 girls working every night," he explained, "but last October we counted 36 girls out on one night alone."

Initially, Sgt Emin teamed up with safer estates and safer neighbourhood officers, supported by Enfield Council, to use outreach via charities that work with sex workers. This alone could not crack the problem, however.

"When you are offering girls – that might be earning hundreds of pounds a night – jobs

stacking shelves, the success rate is clearly not going to be high.

"So we had to go down the enforcement route too."

Every few weeks there are specific days of action, when the area is flooded with all the resources

Sgt Emin and Sgt Harpas can corral, and around three times a week they will ask four to six officers to patrol the area during their night shift to cause further disruption.

The sex workers are then cautioned for 'loitering

for the purpose of prostitution' and given a warning – this can happen twice. On the third occasion they are arrested and charged. Since November last year, 32 people were charged and received a fine. None go to prison. But what of their customers? Sgt Eren says that even though soliciting is a much more serious offence, leading to immediate arrest, the punishment is still a fine.

'Designing out' prostitution is another thing the police can do.

"We have worked with Enfield Council – sex workers need dark places to take clients, so we identify where to put lights in and install CCTV coverage."

Sgt Emin adds:

"Prostitution will not disappear, but our aim is to make Fore Street an uncomfortable place to solicit and to protect the sex workers, who are incredibly vulnerable in the environment they work in."

"Sex workers are incredibly vulnerable in the environment they work in"

Advertisement

The Licensing Act 2003

Notice is hereby given that The Beerblefish Brewing Company Limited has applied to the Licensing Authority of London Borough of Enfield for a Premises Licence to permit: Supply of alcohol

**Mon-Fri 08:00-18:00
Sat-Sun 11:00-21:00
for the premises The Beerblefish
Brewhouse situated at:**

**Unit 6, Georgiou Business Park,
Seond Avenue,
Edmonton, London N18 2PG.**

The public register where applications are available to be viewed by members of the public can be accessed online by visiting <https://new.enfield.gov.uk/services/business-and-licensing> and following the link to the Licensing Register. The application can be inspected upon request to licensing@enfield.gov.uk within 28 days from the date of this notice.

Any person wishing to submit relevant representations concerning this application must give notice in writing to the **London Borough of Enfield, Licensing Team, PO Box 57, Civic Centre, Silver Street, Enfield EN1 3XH**, or by emailing licensing@enfield.gov.uk, giving in detail the grounds of the representation no later than: **24/04/2020**

The Council will not entertain representations where the writer requests that his identity remains anonymous. Copies of all representations will be included in the papers presented to the Licensing Authorities Sub Committee and will therefore pass into the public domain. Representations must relate to one or more of the four Licensing Objectives: the prevention of crime and disorder, public safety, the prevention of public nuisance and the protection of children from harm. It is an offence, under section 158 of the Licensing Act 2003, to knowingly or recklessly make a false statement in connection with an application for a premises licence. A person guilty of an offence is liable on summary conviction to a fine not exceeding level five on the standard scale

The Dugdale Centre is a popular community building in Enfield Town



Dugdale decision is devastating

The director of research and excavations at Enfield Archaeological Society gives his view on the move to convert part of the Dugdale Centre into council offices

BY MARTIN DEARNE

Enfield Council's proposals to evict Enfield Local Studies Library from the Dugdale Centre and scrap the history displays on the first floor are a body blow to anyone who cares about the borough as a living community anchored in its rich heritage.

Under threat of being hidden from the public is the ornate lead coffin of one of Enfield's Roman residents; the objects recovered by archaeologists at the site of Henry VIII and Elizabeth I's Elsyng Palace, which once stood in what are now the grounds of Forty Hall Estate; plus testimonies of how Enfield was a powerhouse of early 20th Century industry.

Today, if you want to know what it was like to grope your way round an Enfield street in pitch dark during the Blitz, you can go to Enfield Local Studies Library and read the diary of someone

who did. You can ask to listen to the actual voice of a woman describing how, as a girl, she saw a German Zeppelin explode in mid-air above the borough during the First World War. You can see just how different Edmonton, Southgate or Ponders End looked in 1910, from early photographs. Tomorrow, who knows if you will be able to do this at all? Certainly, if the council gets its way, you won't be able to discover all of these things in an accessible central location, where the evidence of our collective experience as Enfieldians is carefully preserved and added to so that everyone living here has their story represented and recognised as important.

For anyone who has ever wondered why the shopping centre in Enfield is called Palace Gardens, why the one in Lower Edmonton is called The Green, what 'The Angel' in Upper Edmonton refers to, or how Broomfield House

looked before it was devastated by fire, the answers are readily accessible through Enfield Museum and Enfield Local Studies Library.

If you want to see pieces of an Ice Age mammoth that roamed Enfield, before any human trod here, show your kids a beautiful Roman 'millifiori' brooch found in a back garden in Bush Hill Park, or fire their imaginations about what it would have been like to live in Enfield two hundred or more years ago, go to the first floor of the Dugdale Centre. But go soon, because your council is about to rob you of the chance.

Editor's note: Enfield Council wants to convert the first floor of Thomas Hardy House – also known as the Dugdale Centre – into offices for its family and children's services. The council argues that moving its various staff teams into one space will save £350,000 on rent and help improve service quality. The Dugdale's theatre, café and shop will remain.

Nearly 2000 people have signed a petition:
Visit change.org/p/enfield-council-save-our-dugdale

Playing our park

In our latest councillor's column, Bernie Lappage champions the park at the heart of Jubilee ward

When I was asked some weeks back to write this column, I instantly thought of Jubilee Park and all the amazing community work that takes place there. Little did I realise then how much we will all be valuing this work over the next few months ahead, with the challenges we now face.

Many communities that visit Jubilee Park came together last June in 'Jubilation' to celebrate the park's 80th year anniversary. The sun shone and Enfield Brass Band played for us, as well as two ukulele players who sang songs from the Second World War – music from the era when the park was born. We had support from Edmonton Society and Edmonton Rotary to run the event and the ward police officers arranged for vintage cars and police horses, which the children loved. The fire service also brought their engines along, which caused great excitement!

A dog show run by Jubilee Park's dog training club raised funds for a dog activity trail, which is now planned for the park. This club offers dog training classes on Saturday mornings and has helped enormously to support dog owners and others to fully enjoy the park. Funds were also raised for a defibrillator which is due to be installed shortly. In normal times, other activities in the park include the walking club on Tuesday mornings and Edmonton FC offering football on Thursday evenings and Sundays.

Enfield in Bloom offered support in donating money for plants and local residents have created a rockery bed, which adds such beauty to the park. They also helped us plant crocus bulbs, donated by Edmonton Rotary, and we had fun doing that on a rainy day with local school children.

Jubilee Park has been transformed from a former brick-making factory to a lovely green space and, on

any spring evening, you can see it being enjoyed by all the generations. So many people love this park; it is a focal point for residents to come together and a place of great beauty. The community spirit is inspirational and we salute all the volunteers.

We are already witnessing how the local community has stepped up to support the most vulnerable within our community during this difficult time. Happy days will be here again and we must remember that we are always stronger than we think we are. Take care of yourselves.

Cllr Lappage is one of three councillors representing Jubilee, alongside Alev Cazimoglu and Nesil Caliskan (all Labour).

Call 07812 673 095

Email cllr.bernie.lappage@enfield.gov.uk

Cllr Lappage was elected in 2014



Youth need our help

Recruitment consultant John McDonough on how a proactive approach can help get young people into work

Seven years ago the Social Mobility Commission, which counted Baroness Tyler of Enfield as a member, found that “character and resilience” were the greatest determinants of social mobility.

Neither are very tangible but both are essential, especially given the more recent report published by the Enfield Poverty and Inequality Commission (EPIC). Enfield Council acknowledges there is a problem, but how many involved realise they already have tried and tested solutions?

I moved to Enfield in 1998. Working for a local recruitment agency, I was given a tour of the borough and was fascinated to learn who would travel to the City or the West End for work, who wouldn't, and what would determine this. In 2009 I set up Recro Consulting, an employability and recruitment solutions business. Having recruited at senior levels across the public,

private and voluntary sectors, I could see where gaps were, and I thought local authorities were best placed to address them.

After three years of trying we finally secured some funding and action to work with young people in Enfield. It was a tough gig; many felt lack of experience was holding them back. Many were interested in retail, but we tried to push them towards hospitality, which had vacancies, while retail was making redundancies.

We had amazing successes; more than half went into work and stayed there. On top of that, more than 25% went into sector-specific training. Richard Branson once said: “The way to be successful is to find out what successful people do and copy it.” We used to say this to students in schools. Much of our work was pro bono, or taster sessions that led to more.

The Enfield North MP at the time, Nick de Bois, was pro-active in trying to help us. I remember

a meeting we had with senior officials at the Department for Work and Pensions (DWP). They agreed to try and get some more funding. I also met the minister for employment, who agreed we should be running the programme everywhere.

We only had funding for three programmes. The agreement with DWP and the aspiration of the council was that these would be used as a pilot and then scaled up. The council was keen for this to be part of their response to the housing benefit cap. But then the funding was cut. This despite everyone we dealt with saying this was the most effective programme they had come across. Many people we meet have been around the block – sent on numerous programmes that don't help them get them a job. Many employers are frustrated. But Enfield doesn't have to look far. A leap of faith is required by politicians and public servants.

Advertisement

LETTERS

Send us your letters

Got an opinion on something in Enfield? We accept letters of up to 150 words from people and organisations in the borough. Email EnfieldDispatch@socialspider.com before the next deadline on Tuesday 21st April.

School cuts

Dear Enfield Dispatch

The National Education Union (NEU) asked everyone to “vote for education” at last year's general election and we are pleased Enfield did vote to abolish Ofsted, scrap SATs, reduce class sizes, and put a qualified teacher in every class. Unfortunately, the country as a whole didn't vote with us and despite recent claims by the government, 97% of schools in Enfield will have less money per pupil in 2020, in real terms, than they had in 2015. Worse, 43% of schools in Enfield are set to suffer further cuts.

Enfield teachers tell us that they are now spending their own money to buy basic resources for their classrooms, such is their dedication to your children. But what they are unable to buy is the most valuable resource we have in schools – qualified staff. As hard as Enfield teachers are working for children, the government has not, as yet, properly addressed their workload, with burdensome bureaucracy further threatening the time they have to plan for supporting students.

Our campaign against school cuts continues.

Claire Docherty

District secretary, Enfield NEU

Park threat

Dear Enfield Dispatch

I have lived in Enfield all my life and for more than 25 years I have tried to hold back development of the beautiful countryside we are so lucky to enjoy here. I am now part of the local residents' campaign group trying to get Enfield Council to not 'sell off' our precious Whitewebbs Park. Last year the council decided to dispose of Whitewebbs Park Golf Course and the adjacent ancient woodland, offering a 25-year lease. A petition was raised and successfully gained enough signatures for it to be debated at a council meeting in February. Labour councillors tell us it is not being sold off but, realistically, after a business has invested in it, would it truly ever come back to the people of Enfield?

Jill Simpson
Bulls Cross

Housing consultation

Dear Enfield Dispatch

Enfield Council launched a consultation about its housing allocation policy in December and it is due to end on Friday 24th April (go to enfield.gov.uk/consultations).

On a matter as serious as the housing crisis in Enfield, it is surely vital that the consultation includes as wide a sample as possible – making a particular point of reaching those most in need of social housing. The council must ensure that it encourages all Enfield residents and organisations to participate in an inclusive consultation process; fully informs all potential participants before asking them to give opinions; explains why has it altered the wording from the allocation scheme, to be implemented in the proposed draft scheme; explains how these changes could adversely affect any legal challenge and how they affect disabled and vulnerable applicants; identifies what organisations have been contacted in this consultation; and confirms what advice has been given to those organisations to allow them to be properly informed.

Enfield Council claims the reason for making these changes to the current, already stringent allocation scheme is to “ensure that council and housing association homes go to those most in need”. But by removing 84 pages of vital and legal information, while at the same time altering the words that remain from the current scheme, they cannot reasonably achieve this important aim. This is an utterly bizarre and inappropriate reaction to an escalating demand for a dwindling housing stock.

Government data shows that loss of private tenancy is now the biggest single cause of homelessness. Enfield has one of the highest rates of eviction from private rented accommodation, but the council's response is to shamelessly announce its reliance on the very private sector that is contributing to the crisis. A sensible approach would be to ensure every home built on the Meridian Water project is kept for council housing.

Catherine O'Brien
Meridian for Council Homes



HM Government



Coronavirus Wash your hands more often for 20 seconds

Use soap and water or a hand sanitiser when you:

- Get home or into work
- Blow your nose, sneeze or cough
- Eat or handle food



Where to get help and advice on Covid-19

Emma Friddin from Healthwatch Enfield explains how and where to get help during the coronavirus pandemic

Here at Healthwatch Enfield, we want to keep you updated about the ongoing coronavirus pandemic, the current government guidance, and where you can go for help and advice.

Because this is a developing and fast-moving situation the advice is being updated regularly, so for the very latest it is better if possible to look online, where you can find the latest updated information to help keep you safe.

The best place to find online information about Covid-19 symptoms and medical advice is the NHS website, at [nhs.uk/coronavirus](https://www.nhs.uk/coronavirus). You should only call the NHS 111 helpline if your medical condition is worsening and you can't find the help you need online.

“Look out for family, friends and neighbours who may need support”

The UK government website provides information provided by the Department of Health and Social Care, as well as Public Health England, including the latest advice on who is being advised to self-isolate, what you should do if you're

being asked to stay at home, and what other measures the government is asking people to take. Go to [gov.uk/guidance/coronavirus-covid-](https://gov.uk/guidance/coronavirus-covid-19-information-for-the-public)

[19-information-for-the-public](https://gov.uk/guidance/coronavirus-covid-19-information-for-the-public).

At Healthwatch Enfield we are also providing information specific to the borough on our own website, at healthwatchenfield.co.uk and on our Twitter and Facebook pages. Do also consider other reputable community websites in Enfield for this, because they will be a

good source for community information in terms of help and directing people to support for isolation. We are geared up for our staff to work from home so we will still be taking calls on our helpline number as usual over the coming months.

We will also be supporting community activities and signposting wherever possible to help keep our elderly and vulnerable residents safe. We'll continue to be in contact with community groups and organisations via phone, email or text to maintain and enhance our relationships across the community.

As the situation evolves, it is likely that both North Middlesex Hospital and Chase Farm Hospital will make temporary changes to guidance around visiting inpatients on their wards. We will endeavour to update our website with this information as it is announced, but we recommend you check with ward

staff and/or the hospital's website before making any visit.

Our last piece of advice is to please look out for family, friends and neighbours who may need practical or emotional support during this time. If you have an elderly neighbour or are aware of someone with a health problem that may make them more susceptible to the coronavirus, knock on their door or give them a ring and ask them if there is anything they need or anything you can do to help.

For more information about Healthwatch Enfield and to get in touch:

Call 020 8373 6283

Email info@healthwatchenfield.co.uk

Tweet @HealthwatchEnf

Visit healthwatchenfield.co.uk

healthwatch
Enfield

Supporting the community during this difficult time

Jo Johnson from Love Your Doorstep on what people can do to help local organisations as the public health crisis continues

During the ongoing coronavirus pandemic, aside from the obvious health concerns of people, particularly the elderly or vulnerable becoming sick, there will be a significant impact on our local business community.

We are already hearing of businesses who have had cancellations from people who no longer require their services. Of course, as is the case for many local businesses, there is concern over what happens when a self-employed person cannot work because they are having to self-isolate, or there is no need for their business during this time.

At Love Your Doorstep we have been trying to keep businesses up to date, communicating with them about any developments or any announcements of support or advice from the government. Everyone is trying to pull together at this challenging time, offering their suggestions of how a business facing difficulties might be able to adapt their offering slightly so that they can continue to provide a service and maintain their business, for example caterers delivering meals to individuals.

I'd like to highlight some of the ways that you can continue to support local businesses during this period. Firstly; shop online! Place your orders via the businesses' websites or social media platforms. You can also buy gift vouchers for a product or

service that you can use at a later date.

Although many local shows and events are being cancelled or postponed, you can still buy tickets for later on in the year. Local arts organisations such as Chickenshed Theatre are also asking people to consider not claiming for refunds on postponed events,



Love Your Doorstep is organising community deliveries to those who need them during the Covid-19 pandemic

and instead treat them as donations.

Remember you can still leave reviews for local businesses on the Love Your Doorstep directory page. You might have used them recently or even in the past, but being able to see your feedback reminds businesses that their work is appreciated and makes it all worthwhile. You can also share their social media posts and help keep their profile raised.

Another thing we have been discussing with our businesses is how they can help keep the community busy during their self-isolation, and entertain children during school closures. Keep a look out for tips and ideas of activities, recipes, crafts and boredom busters to occupy your time during this period. Having access to our community platform means we will all have each other's company online, support each other, and help keep up morale.

At times like these our community pulls together more than ever. We are so fortunate to have so many people willing to volunteer their time to help others, along with some fantastic local charities trying to ensure everyone has everything they need. North Enfield Foodbank and the Felix Project have been amazing with food packages for those who might need it, and our local faith groups and community groups are doing their bit to make sure the elderly and vulnerable members of our society in particular are looked after during these difficult times.

Get involved with Love Your Doorstep:

Email hello@loveyourdoorstep.co.uk

Facebook facebook.com/loveyourdoorstepEnfield

Twitter @LoveUrdoorstep

Visit loveyourdoorstep.co.uk

INTERVIEW

Candice attitude

Hannah Dyson meets a community organiser determined to make life easier for parents and their children



Candice Charles is a local foster carer and allotment enthusiast

Candice Charles has a vision for a community hub that feeds local residents from the produce of her allotment, but also provides information sessions and workshops for parents focusing on safety.

As we chat at Enfield Town Library's cafe we admire the precious crocuses and daffodils swaying in the light breeze. It's as if these spring offerings know we need to listen to Candice's story. Her eyes light up when we talk about children, and she explains: "I've got three children with complex medical needs. My eldest has a heart condition and my middle son has autism."

Candice's middle son, now 22, suffers from attention deficit and hyperactivity disorder (ADHD), epilepsy and von Willebrand disease. "When he first displayed symptoms of epilepsy aged seven I knew I wanted to fight for him and researched what type of epilepsy he had and what medication he should take.

"In the end it was a piece of dark choc-

olate that he needs to keep the seizures at bay and doctors were astounded that, without any formal medical training, I worked this out through sheer determination and extensive research." Candice's mother was a nurse so maybe it's natural that she has an inbuilt fight in her and a caring nature.

"I am one of eight [children], my mother is from Aruba and dad is from Grenada. I've been a foster carer and child-minder too."

Candice's road to fostering children wasn't the conventional route. "I found three young girls in their school uniform on a Sunday morning at 4am. Not being a great sleeper, I noticed them outside as I was studying for a course. I took them into my house and took care of them. I informed social services, but they're overworked and overstretched, so it was some time before they came over to do any formal assessment."

"I've noticed many parents don't have the means to feed their children"

Candice looked after the girls diligently with love, like they were her own.

"Another time I found a pregnant 15-year-old girl outside my house with bruises all over her, having been discharged back home the previous month by social services. My sons and I slept downstairs in the living room and let her take the bedroom upstairs."

Cuts in services, poverty, confusion and difficulties over benefits mean that people are really struggling.

Over time, Candice has noticed more hardship, especially in the local school community where she does the school runs for her nephew.

"I've noticed many parents don't have the means to feed their children."

Candice started her allotment after her partner, Michael, suggested it to reduce stress. The Felix Project, a local charity repurposing surplus food

supermarket produce, drops food off to school on a Friday and this is very popular among parents, but Candice noticed many don't have working kitchens to actually make meals. She came up with the idea of a community kitchen, feeding people with the produce from her allotment, and hopes to run the project daily – but needs to find an additional venue and funding.

Candice adds: "Alongside the hot meals I plan to run some workshops focusing on child safety and safeguarding, including internet and phone safety."

The future looks bright when you meet people like Candice, who has a positivity that knows no bounds and is fearless, wise and strong. Working with people from different nationalities and backgrounds it will be exciting to see the project in full swing, but it will only be a true success if lots of people get involved and help this inspirational woman with her vision. Her story shows how communities can come together not only to nourish but also to heal their hearts and minds.

Carole Kuhuma (centre) joined girl group Calyco last year



Finding my voice

Carole Kuhuma from Enfield is making a name for herself as part of an up-and-coming girl band

Music has always been a passion of mine while growing up.

During my time at secondary school, with the help of my music teacher at Oasis Academy Hadley in Ponders End, my musical abilities were developed. I joined the school choir, which was conducted by the R&B and soul artist Jaz Elington, and we were able to support him during his semi-final performance on *The Voice UK*. We even ended up featuring in American rapper Will.i.am's song *Reach For The Stars*, which was an incredible experience!

After secondary school I focused

on my A-Levels at Sir George Monoux College in Walthamstow, from there I met awesome friends who were also musically gifted. We usually stayed back after college to create songs. After pursuing a nursing career at Kingston University I realised I still loved singing, so I decided to join in with my church choir at Tottenham Baptist Church, which helped me to train my voice even further.

Last year was a crucial year in my life, as it was when I decided to truly follow my lifelong dream of becoming a full-time singer.

My prayers were finally answered when I was approached by producer Harlano Weekes to audition for a new all-female band.

“Our dreams are to create number one singles and perform around the world”

Calyco is a five-piece pop and R&B group, with the name formed by the letters of its members' names. We are five lead singers with five strong personalities.

My favourite part of being in Calyco is having four best friends to share secrets, issues and laughter with. Our dreams are to create number one singles and perform around the world. We are trying to get away from the usual route of reality television or music competitions, and instead connect with new fans by releasing music and videos online.

We post individual vlogs on all our social media and we also have an exciting tour set to be scheduled at some point in 2020.

Our debut single *Flo* was released

in February and has already had more than 12,000 views on YouTube – which is so crazy! It is a harmony-tinged mix of trap, reggae, R&B and pop music, and we all share lead vocals. We have so many other tricks up our sleeves, so make sure you follow us on Instagram, Facebook, YouTube, Twitter and TikTok so you can be involved in our musical journey!

Watch the music video for Calyco's debut single *Flo*:
Visit youtube.com/watch?v=XhYnklpdF0M

Find out more about Calyco and discover their music:
Visit calycomusic.com

PUBLIC NOTICE
 London Borough of Enfield
NOTICE OF DESIGNATION OF AN AREA FOR ADDITIONAL LICENSING
 Section 56, Housing Act 2004

The London Borough of Enfield ("The Council") in exercise of its powers under section 56 of the Housing Act 2004 ("the Act") hereby designates the entire area of its district, as subject to Additional Licensing as described at paragraph 4. The designation applies to all Houses in Multiple Occupation ("HMOs") that are occupied under a tenancy or a licence as described at paragraph 4.

CITATION, COMMENCEMENT AND DURATION

1. This designation will be known as The London Borough of Enfield Designation of an Area for Additional Licensing of Houses in Multiple Occupation 2020. The Designation is made on 22 January 2020 and shall come into force on 1 September 2020¹.
2. The designation shall cease to have effect on 31 August 2025 (not more than five years) or earlier if the Authority revokes the scheme under section 84 of the Act.

AREA TO WHICH THE DESIGNATION APPLIES

3. This designation shall apply to the entire area of the London Borough of Enfield as delineated and edged red on the map in Annex A below.

APPLICATION OF THE DESIGNATION

4. The designation applies to all Houses in Multiple Occupation ("HMOs") as defined by section 254 of the Act that are occupied by 3 or more persons comprising 2 or more households as defined in Annex B, within the area described at paragraph 1 unless:
 - a. the house is an HMO that falls within the nationally prescribed category of HMO that is required to be licensed as a 'mandatory HMO' under section 55(2)(a) Part 2 of the Act²;
 - b. the house is subject to an Interim or Final Management Order under Part 4 of the Act;
 - c. the house is subject to a temporary exemption under section 62 of the Act;
 - d. The house is an HMO that is a building or part of a building that is not an HMO for the purposes of licensing under Part 2 of the Act³ as defined in Annex C/ Schedule 14 of the Act; or.
 - e. it is a building converted into self-contained flats but does not meet the standards of conversion required by the Building Regulations 1991, and where less than two thirds of the flats are owner occupied to which Section 257 of the Housing Act 2004 applies

EFFECT OF THE DESIGNATION

5. Subject to sub paragraphs 4(a) to (e) above, every HMO of the description specified in that paragraph in the area specified in paragraph 3 shall be required to be licensed under section 61 of the Act.
6. The designation falls within a description of designations in relation to which the Secretary of State has issued a General Approval under section 58 of the Act, namely, The Housing Act 2004: Licensing of Houses of Multiple Occupation and Selective Licensing of Other Residential Accommodation (England) General Approval 2015 which came into force on 1 April 2015.
7. The London Borough of Enfield will comply with the notification requirements contained in Section 59 of the Act and shall maintain a register of all houses registered under this designation, as required under section 232 of the Act⁴.

If you are a landlord, managing agent or a tenant, or if you require information regarding this designation, or to apply for a licence, further information and assistance is available from the Council's Private Rented Property Licensing Team by email on PRSH@enfield.gov.uk, or by telephone on 020 3821 1761 or by writing to Private Rented Property Licensing Team, London Borough of Enfield, Civic Centre, Silver Street, Enfield, Middx, EN1 3XH. The Designation may be inspected at the above address during office hours.

All landlords, managing agents or tenants within the designated area should obtain advice to ascertain whether their property is affected by the Designation by contacting the Council's Private Rented Property Licensing Team.

Upon the Designation coming into force any person who operates a licensable property without a licence or allows a licensed property to be occupied by more households or persons other than as authorised by a licence, is liable to prosecution and upon summary conviction is liable to an unlimited fine pursuant to the provisions of section 72 of the Housing Act 2004. A person who breaches a condition of a licence is liable upon summary conviction to an unlimited fine. The Council, as an alternative to initiating a prosecution, may pursue one or more of a range of other enforcement actions including the imposition of a financial penalty of up to £30,000 and/or taking management control of the unlicensed HMO. Further, where an offence has been committed an application may also be made by the Council and/or tenant under the provisions of section 73 and 74 of the Housing Act 2004 for a Rent Repayment Order to pay back up to 12 months' rent, Housing Benefit or Universal Credit.

Signed

Portfolio holder and elected Cabinet Member

For and on behalf of London Borough of Enfield

23 January 2020

Annex B: HMOs to which this designation applies [subject to paragraph 4 above]

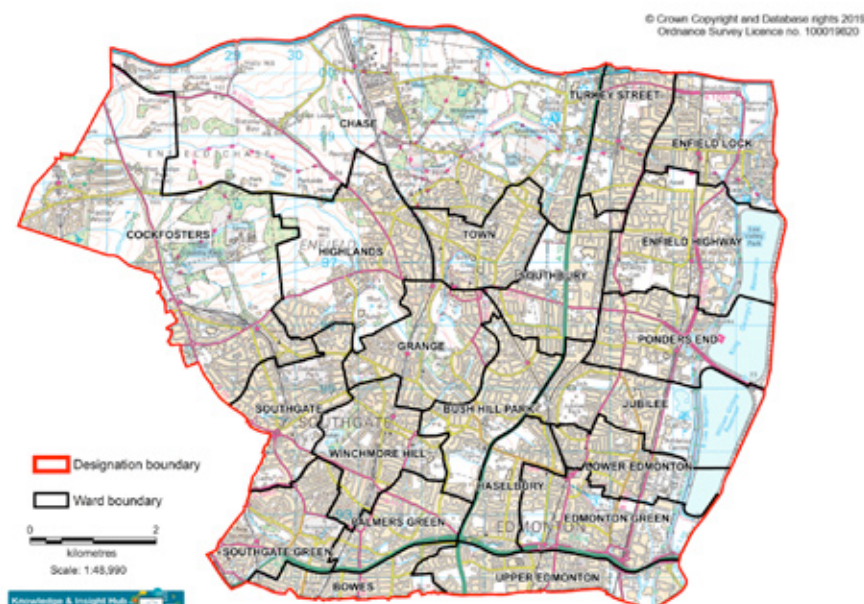
Please see Section 254(1) of the Housing Act 2004, except the designation does not apply to HMOs described in Section 254(1)(e) - converted blocks of flats to which section 257 applies.

Annex C: Buildings which are not HMOs for purposes of this designation.

Please see Schedule 14 of the Housing Act 2004.

- 1 Subject to any decision made if called in to Enfield Council's Overview and Scrutiny Committee
- 2 Section 55 of the Act defines which Houses in Multiple Occupation are required to be licensed under the Act. See also The Licensing of Houses in Multiple Occupation (Prescribed Descriptions) (England) Order 2005 (SI 2006/371)
- 3 Schedule 14 Housing Act 2004 describes the buildings that are not HMOs other than for the purpose of Part 1 [HHSRS]
- 4 Section 232 of the Act and paragraph 11 of SI 373/2006

Annex A: Map of additional licensing designation showing boundary in RED



AROUND THE BOROUGH

PALMERS GREEN

The protest outside Arla's Oakthorpe Dairy last month attracted scores of animal rights activists



Animal rights activists target dairy

ANIMAL RIGHTS ACTIVISTS staged a protest outside a large dairy – calling for the company that runs it to “transition to a just and sustainable plant-based food system”. A mass civil disobedience campaign called 'Animal Rebellion' held a street party outside Arla's Oakthorpe Dairy plant in Chequers Way, close to the North Circular.

The company is the largest dairy manufacturer in Europe. Sales of plant-based milk alternatives have been steadily rising and several farms in the UK have begun making the switch to producing dairy alternatives, such as oat milk. Animal Rebellion highlights the environmental impact of the dairy industry, with vegan-

ism being hailed as one of the best ways for people to reduce their carbon footprint. An Animal Rebellion spokesperson said: “We are not here to vilify Arla, we are here to call on the government to help facilities like Arla transition to a plant-based milk facility.” Arla was approached for comment.

ENFIELD TOWN

Fresh water

FRESH DRINKING WATER CAN now be freely found for anyone feeling thirsty. A new water fountain outside Enfield Town Station allows residents and visitors to refill their own reusable drinking bottles with “top-quality” tap water, helping to reduce plastic waste. It has been installed as part of a partnership between Thames Water and the Greater London Authority, with 100 set to be put in place across the capital. All are topped with a distinctive blue water droplet. Steve Spencer from Thames Water said: “Tap water is just as good as bottled water, but without the plastic packaging.”

HIGHLANDS

CCTV installed

CCTV HAS BEEN INSTALLED TO help tackle crime and anti-social behaviour in two locations. New cameras at entrances to Highlands Avenue and World's End Lane come in response to residents' concerns being raised with Enfield Council. They will be linked to the council's CCTV control room, giving 24/7 coverage. Nneka Keazor, the council's cabinet member for community safety and cohesion, said: “We listened to our residents and ward councillors and have taken swift and decisive action to install cameras, which will reduce crime and anti-social behaviour and enable us to gather evidence in the event of a crime.”

SOUTHGATE

By the book

THE WORLD'S 94,386TH 'LITTLE Free Library' has opened at Con-way Road Recreation Ground. Described as “the world's largest book sharing movement”, Little Free Library offers small outdoor storage units where anyone can take a book for free and return them as and when they are ready. They rely on people donating books and being honest in returning when they're finished. Such libraries can now be found in countries the world over, from Guatemala to Sudan, and each free book exchange offers “a unique, personal touch” with local people sharing their favourite books with the local community.

COCKFOSTERS

Station car park campaign

BY SIMON ALLIN,
LOCAL DEMOCRACY REPORTER

CAMPAIGNERS HAVE SLAMMED “ridiculous” plans to build blocks of flats at Cockfosters Station. A group called 'Save Cockfosters' is opposing plans by Connected Living London – a partnership between Transport for London (TfL) and developer Grainger – to build 370 homes on the tube station's car parks. They argue the station was originally designed as a park-and-ride facility in the 1930s, and that hundreds of commuters still use it in this way. TfL previously admitted that three-quarters of those using the station car park travel from outside the M25. A Save Cockfosters spokesperson said: “Cockfosters is at the end of the line, next to the Green Belt, and it's a ridiculous idea to remove the car park forever. “It plays an important role as a park-and-ride facility.” The campaigners also highlight that Cockfosters Station is a Grade 2-listed heritage site, and the car park lies within a designated conservation area encompassing

nearby Trent Park. Despite this, Enfield Council has said the developer doesn't need to submit a report detailing the likely environmental impact of the scheme because it “does not involve development in a particularly environmentally sensitive or vulnerable location”. TfL say the current car parks, built in the 1960s and 1970s – decades after the original station and car park – are not included in the Historic England listing. It adds that around 95% of car park users live closer to a station other than Cockfosters. Ben Tate, head of build-to-rent at TfL, said: “We are developing our designs with great consideration being given to the character and important heritage of the local area, alongside extensive engagement with the local community. “By building alongside the urban edge of Cockfosters, we are working to deliver sustainable growth and homes that help to protect the Green Belt, while improving pedestrian access to Trent Park so that countryside is more easily accessible for the public.” A petition against the scheme has 3,000 signatures.

ANGEL EDMONTON

New street cleaning team

ENFIELD COUNCIL HAS HIRED a dedicated clean-up team to tackle litter and other environmental issues in areas around Fore Street. Cash raised from the council's flagship Meridian Water housing project is being spent on the new dedicated team, which will regularly patrol Fore Street and the Joyce and Snells housing estates. Nesil Caliskan, the council leader, said: “People living in and around Fore Street told us that they thought the area needed more regular cleaning, so we have done what they asked. “We are a listening council which works hard to improve

its residents' quality of life. We are working incredibly hard to improve Enfield as a place to live and work in and we will not allow any part of our borough to feel neglected. “This investment builds on the £500,000 we allocated to tackle fly-tipping and littering last year and we will continue to allocate resources to keep Enfield tidy for the people who live here.” Money generated from Meridian Water is also set to be used to help tackle crime and disorder, with the recruitment of specialist officers to tackle anti-social behaviour in the area now being planned.

On the run

Triffic Trail's race director Alan Collingbourne invites locals to sign up for this summer's charity run



Triffic Trail takes place in Trent Park on Sunday 21st June

How are health and fitness, people of all ages, green open spaces, competitive running, local charities and Trent Park Running Club all connected?

The answer is Trent Park Triffic Trail. This annual event, organised by the running club, has a long history going back to 1985. Following various changes over the years, it now takes place in June each year and has two runs; a 10km circuit for seniors and 4.5km route for juniors. It all takes place within the picturesque fields and trails of Trent Park. It is an undulating course but

gets a lot of runners that return each year, as well as attracting new entrants.

Chas Taylor, chair of Trent Park RC, said: "Trent Park Running Club is a running club for all, and Triffic Trail is a run for all abilities.

"We are very excited to hold it again this year on Sunday 21st June. We put a lot of effort into organising a great local event for competitive racers and fun runners alike, promoting health and fitness. It takes a lot of work throughout the year – and over 100 volunteers on the day – to ensure a successful event."

The club has a core team ensuring that

it all runs smoothly. They and the other volunteers do a fantastic job, which brings positive feedback each year. They are invaluable to the success of the event.

Local estate agents, Chamberlains Estates, have been main event sponsors for the past ten years and are donating 30 places to three amazing local charities; Chickenshed, Nightingale Cancer Support Centre and Noah's Ark. It will enable these great organisations to raise further funds – Chamberlains are well known for supporting their local community.

As race director for the last five years, I enjoy arranging Triffic Trail. We have increased entrants each year and my aim is to get more than 600 seniors and 100 juniors this year. Each finisher will receive a T-shirt and goody bag. There are numerous prizes in different age categories, spot prizes, chip timing, a fully marshalled course and water stations. We will also be reducing our use of plastic this year.

We are very grateful to all our sponsors and are proud to involve and support local charities. They are an important part of the event.

To sign up for this year's Trent Park Triffic Trail taking place Sunday 21st June:

Visit triffictrail.com

Editor's note: This event is under review. It will be directed by government advice. If postponed or cancelled, a full refund will be made.

Football club 'mothballed' during pandemic

BY ANDREW WARSHAW

With football wiped off the map throughout the country because of the coronavirus pandemic, non-league clubs are suffering more than most – including Enfield Town FC.

Unlike the professional game, many part-time clubs live hand-to-mouth without the benefit of TV money, relying on match-day income to keep them afloat. They have no possibility of playing behind closed doors or relying on bail-out loans to prop them up until the situation improves. Every penny Enfield Town spends has to be accounted for and the suspension of the Isthmian League on the day the club were due to host runaway division leaders Worthing will have a devastating effect on revenue streams in the weeks and months to come.

Dark horses for a play-off spot, Andy Leese's squad had hit a decent run of form, winning 1-0 at Bishop's Stortford with a resilient display, 72 hours after a fine 1-1 draw at high-flying Folkestone.

Within days of the season being curtailed, Towners chairman Paul Reed posted a message to supporters on the club's website, painting a grim but realistic picture of the situation by explaining that the club would be closed until further notice and that the players had all been told they could not be paid with no matches to play.

"Our financial situation is exceptionally tight, and even more so now without the anticipated revenue from games," Paul told supporters. "But we are fully aware of our income and expenditure position, which is very important, and will take whatever actions the board deem necessary to stabilise our position during the enforced break."

Reed told the *Dispatch* that the dire consequences of Covid-19 cannot be over-estimated. "It leaves a big hole," he explained. "We will survive for sure but a club like ours is losing 90-95% of its income."

"With no revenue from gate receipts or bar income we've had to effectively mothball the club. Pretty much all of our income that we budgeted for the next few months has now been put on hold."

Other clubs are in the same boat, of course, and Paul is pessimistic that the season will resume. The professional game could return as soon as May, but football at Enfield Town's level could well be over, with the club currently in seventh place.

"I can't see it happening, to be frank. I don't think we'll play again until August. Whether that means we start in August and finish this season first, or start again afresh, is a decision for the leagues."

In the meantime, the club would welcome any donations from fans and other members of the public until football resumes.

Make a donation to help support Enfield Town FC during the coronavirus pandemic by transferring funds to ETFC Ltd, Barclays Bank, using sort code 20-45-45 and account number 43222942. Please mark any transfer with your name and the word 'donation'.

Racing certainties

BY ROBERT TAYLOR

Winners of Green Belt Motor Club's 17 motorsport championships were recently presented with their trophies during an annual dinner at Crews Hill Golf Club.

The presentations were made by honorary member Anthony Ashwell, who is a former autocross and rallycross competitor and now provides a venue for the club's autocross racing events at his farm in Essex.

Green Belt's chairman, Enfield resident Malcolm Wise, won two awards. These were the Jackson Trophy, for the club's best motor racing driver, and the Gerry Thurlow Memorial Trophy, for the best set of performances in 15 events, which can be in any type of motorsport.

Last year he raced his Ford Escort

Cosworth at Brands Hatch and Snetterton in the Southern Super Saloon Car Championship events. In this 500-horsepower racing saloon car he finished in second place in the fiercely contested class for cars of up to 2000cc.

Club secretary Chris Deal, from Edmon-ton, was the runner-up in the championships for co-drivers on multi-venue special stage rallies. With driver Richard Warne, he earned this trophy by recording some good results in the former's Ford Escort RS 2000. Their best results included finishes in the top half-dozen of their class on the Rally Nuts Stages Rally and the Nicky Grist Stages Rally.

Finally, the award for best expert crew on the club's annual treasure hunt, the Greta Taylor Memorial Trophy, went to Donald Berry of Winchmore Hill, Felicity Brown from New Southgate, and



Richard Warne (behind the wheel) and Chris Deal (in the passenger seat) compete in their Ford Escort rally car

Desmond Meldrum from Grange Park. At the annual dinner club president Richard Warne also paid tribute to Green Belt's co-founder, Tony Strong from Bowes Park, who sadly passed away last year. He was club secretary for more than 30 years.

For more information about Green Belt Motor Club: Visit gbmc.org.uk

Support independent local journalism

What we do

Here at *Enfield Dispatch* we do things differently. We combine professional journalism with voluntary contributions from people who live and work in the borough and create content which is responsive to and reflective of the community.

These are challenging times for print media with many newspapers closing and advertising revenue in decline, but our not-for-profit model offers a new approach to creating local journalism which is inclusive and accountable.

How you can help

As a not-for-profit publication we rely on the generous support of our community. We look to our readers, who recognise the value of independent journalism, to help support us.

You can do this by becoming a member either as an individual or as an organisation. See the rewards opposite and once you've decided what package you would like, visit our website:

enfielddispatch.co.uk/join

Individual rewards

£3 per month upwards:

Name in print and online, pin badge

£5 per month upwards:

Name in print and online, pin badge, tote bag, paper posted to you every month

Organisational rewards

£10 per month:

Name in print and online, 10% discount on advertising

£20 per month:

Name and logo in print and online, 20% discount on advertising

£50 per month:

Name and logo in print and online, 40% discount, six free small adverts per year

Current members

Derek Grant, Michael Dickinson, Michael Cole, Young Notes, Ed Balleny, Natasha Boydell, Elizabeth Crosthwait, Richard Stones, Philip Ridley, Suzanne Beard, Chris Kaufman, Martyn Stogden, Susan Cook, Rupert Price, Meryn Cutler, Andrew Irvine, Basil Clarke, John Naughton, Right at Home Enfield, MumSing Choir, Penelope Williams, Lloyd Tew-Cragg, Andrew Warshaw, Anna Crowley, Neil Churchill, Karl Brown, Anthony Fisher, Dan Wright, Residents of Edmonton Green, Kay Heather, Julia Mountain, Excellence in Learning Community, Jerome O'Callaghan, Carole Stanley, Mervyn Maggs, Aditya Chakraborty, Norman Bennett, Vivien Giladi, Greg Andrews, The Old Enfield Charitable Trust, Matt Burn, Enfield URCs, Martin Russo, Marilyn Hamilton, Laura Davenport, Ed Poole, Mick Wood, Helen Osman, Ranvir Mallick, Enfield Over 50s Forum, Francis Sealey, Caroline Banks, W A Linton, Joe Hickey, Irene Richards, William Yates, Peter Mitterbach, Gianni Sarra, Tracy Hughes, Kristiana Heapy, Neil Bachelor, John Crowther.

Member organisations



touching hearts, changing lives
Slimming World Enfield and Tottenham