

# ENFIELD DISPATCH

Nº. 22 THE BOROUGH'S FREE COMMUNITY NEWSPAPER

JULY 2020

## FEATURES

The food delivery service for African-Caribbean residents

P. 5

## INTERVIEW

Enfield North MP Feryal Clark reflects on her first six months

P. 7

## HISTORY

Discover the intriguing origins of Enfield's various postboxes

P. 13



A NEW PIECE OF ARTWORK paying homage to nhs staff and other key workers and volunteers has been unveiled at Edmonton Green Shopping Centre. The "wall of thanks" was painted by artist Emma Ghafur (centre), director of local arts organisation Tiger Monkey UK. Also pictured are operations manager Marie Kyriacou-Edwards (left) and asset director Sabri Marsaoui (right).

## Tests denied to care homes at pandemic peak

BY JAMES CRACKNELL  
& BELLA SALTIEL

Care homes in Enfield were refused Covid-19 tests for symptomatic residents at the peak of the pandemic, the *Dispatch* can reveal.

Health secretary Matt Hancock told a Downing Street press conference on 15th April that any symptomatic care home resident would be tested. But days later, Public Health England (PHE) was still refusing to issue such tests to care homes in Enfield – reserving them only for homes “reporting recent suspected outbreaks”.

At Elizabeth Lodge, where care worker Sonya Kaygan and several residents died in the borough's worst coronavirus outbreak, tests were refused on the basis that Covid-19 had already spread widely throughout the home.

A spokesperson for Care UK, which runs the Highlands care home, said that on 16th April “we asked for tests for residents who were displaying symptoms and were told that we couldn't have tests because we already had an outbreak at the home”.

In an email to another borough care home, seen by the *Dispatch*, a PHE official told the home's manager on 18th April that they were “not managing this as an outbreak at this stage” and would not issue any tests. One resident at Eastbrook House in Edmonton had already died, while two others had Covid-19 symptoms.

By chance, Eastbrook House was later invited to take part in a pilot programme of mass testing. Manager Jonathan Beacham says the care home was one of just 15 across England to take part, a “stroke of luck” that he says

saved lives. The tests subsequently administered proved that half of Eastbrook's residents had Covid-19 – including the two residents denied tests a few days earlier.

Jonathan told the *Dispatch*: “Lives were saved by being in that pilot. It enabled us to focus on isolating residents who had coronavirus and stopped it from sweeping to the rest of the home.”

“If it wasn't for that we could have had a full house of Covid-19. We got away with it by the skin of our teeth.”

“If other care homes were waiting three weeks to get any tests, the virus would have spread. They were just too slow. You can promise 100,000 tests [per day] but delivering it took too much time. Public Health England was only capable of [mass] testing residents at 15 care homes – that is not good enough.”

Out of 25 deaths at Elizabeth Lodge

during the pandemic, 17 residents and one member of staff are confirmed as having died from Covid-19. Although Care UK says that supplies of PPE had been sufficient and that no patients had been discharged from hospital to Elizabeth Lodge, on the issue of testing the company's spokesperson said: “Along with many other care home providers, we worked with Care England to flag to ministers concerns around the lack of availability of testing for the care home sector.”

According to the Office for National Statistics, Enfield had the most coronavirus-related care home deaths in London. Between 10th April and 19h June, there were 187 total care home deaths across the borough, of which 74 were “deaths notified as involving Covid-19”. Enfield has the

▶ CONTINUED ON PAGE 2



enfielddispatch.co.uk



@EnfieldDispatch



enfielddispatch@socialspider.com



The *Dispatch* is supported by Chamberlains Estates – turn to page 3

Sales & Lettings Agents

**Chamberlains**

020 8366 3551



# ED.

Nº.22

JULY 2020

Enfield Dispatch is the borough's free community newspaper. We publish monthly and distribute 10,000 free copies of each issue – and we will continue to do so during the ongoing public health crisis.

**Publisher**  
David Floyd

**Editor**  
James Cracknell

**Designer**  
Jonathan Duncan

**Head of Advertising**  
Klaudia Kiss

**Head of Operations**  
Paige Ballmi

**Engagement Manager**  
Penny Dampier

**Contributors**  
Bella Saltiel, Simon Allin,  
Ros Lucas, Hayley Butchart,  
Dionne John, Nnenna  
Anyanwu, Andrew Warshaw,  
Alessandro Georgiou,  
Kaan Kartal, Emma Friddin,  
David Chandler

## CONTACT

Call 020 8521 7956

Email [EnfieldDispatch@socialspider.com](mailto:EnfieldDispatch@socialspider.com)

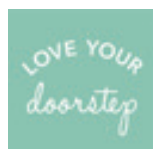
Post Salisbury House, Bury Street West, Enfield N9 9LA

## ADVERTISING

Contact Klaudia Kiss:

Call 07732 000 430

Email [klaudia@socialspider.com](mailto:klaudia@socialspider.com)



We are grateful to Love Your Doorstep for their ongoing support



Enfield Dispatch is a member of IMPRESS: The Independent Monitor of The Press. For more information on the Dispatch's complaints policy and how to make a complaint visit: [enfielddispatch.co.uk/complaints](http://enfielddispatch.co.uk/complaints)

# Enfield to become 'big-budget film hub'

BY SIMON ALLIN,  
LOCAL DEMOCRACY REPORTER

An industrial site in Enfield has been chosen to host a huge new film studio complex – claimed to be the largest in London.

The 1.29-hectare OMA Film Studios, about the size of two football pitches, is being opened in response to growing demand from international companies. The complex in Mollison Avenue, Enfield Lock, features four soundproofed stages and three workshops and is due to open later this summer, in line with government safety advice.

Global filming activity has risen steadily in the UK over

the past decade. Figures from the British Film Industry show total spending on film and high-end TV production reached £3.62billion in 2019 – a 16% increase on the previous year.

Responding to the growing demand for studio space, film locations agency Location Collective secured a lease on an existing industrial unit, with backing from Enfield Council. Managing director Antony Iredale said: “Continuing to invest in projects like this is critical, not just to ensure the film industry can bounce back quickly, but to help restore the health of the UK economy as a whole.

“We are extremely excited about working closely with Enfield Council to make a huge success of OMA Film Studios and to place

Enfield firmly on the map as a hub for big-budget filming activity.”

The council's deputy leader, Ian Barnes, is a film director by trade and was previously nominated for an Oscar for his 2010 short film *Wish 143*. He said: “We have worked with Location Collective to make sure their proposal was right for the borough. Our ambition is for Enfield to become the premier location for TV and film production in London.

“The creative industries are worth more than £40billion to London's economy and the financial benefits to our borough when stars like Benedict Cumberbatch film here, along with the potential for apprenticeship schemes for local people, are exciting and will put Enfield firmly on the map.”



OMA Film Studios in Enfield Lock is the size of two football pitches

## ▶ CONTINUED FROM PAGE 1

third-highest number of care homes in London, with 82.

On 5th June Enfield Council leader Nesil Caliskan wrote to Matt Hancock calling on the government to fix “flaws” in its testing regime – saying only one in ten borough care homes had been offered mass testing. On 15th May the health secretary promised to “test every resident and every member of staff in our elderly care homes in England between now and early June”. At the end of June more than one third of care home residents were still awaiting tests.

National Care Association chair

Nadra Ahmed has been scathing of the government's response. She said: “Why on earth did it take so long to recognise the importance of testing? This is the unfolding tragedy of the decisions taken not to support vulnerable people in social care settings – it is unforgivable.”

A Department of Health and Social Care spokesperson said: “During this unprecedented global outbreak we have kept our social care guidance under constant review and have been working tirelessly with the sector to reduce transmission and save lives.

“As a result, according to the latest PHE statistics, 57% of care homes have had no outbreak at

all. The government has built a robust and efficient testing programme at record pace, ensuring that anyone who needs a test can access one.”

A PHE spokesperson said: “Our local health protection teams are working hard to support the care homes in their areas. They remain the first point of contact for care homes to report suspected outbreaks of Covid-19 and arrange initial testing to confirm the outbreak and provide infection control advice, which includes advice on isolating residents, cleaning, and appropriate use of PPE. All additional tests are co-ordinated through the government's national testing service.”

## Labour exit

Two councillors have quit Labour to serve as independent members.

Winchmore Hill councillor Dinah Barry and Southgate councillor Derek Levy have declined to comment on their reasons for leaving Labour but both have been critical of the current Enfield Council leadership.

Cllr Barry was previously chair of the Labour group, but resigned from that role in 2019 after citing “persistent bullying”. And it was Cllr Levy's complaint in 2018, as the then chair of overview and scrutiny committee, which led to council leader Nesil Caliskan being reprimanded for breaching the code of conduct.

## Tower plans

A controversial high-rise development in Southgate has been rejected by councillors after hundreds of residents complained they would be overshadowed.

Objections were heard at a planning committee meeting on Tuesday 23rd June, successfully dissuading councillors from granting permission – despite officers recommending approval for the 17-storey scheme at Southgate Office Village, adjacent to Southgate Circus Conservation Area. The development would have included 216 new homes, but the ‘affordable’ housing designation of 35% was said to breach council policy.

Read the full story on the *Dispatch* website at [enfielddispatch.co.uk](http://enfielddispatch.co.uk).

## Sex work

The Met Police has launched a dedicated team focusing on prostitution in Upper Edmonton.

One sergeant and six police officers will work alongside Enfield Council and outreach workers to engage with women and offer them help through an independent sex worker advisor and other referral facilities. The team will look at “reducing, if not eradicating” numbers of persistent workers and kerb crawlers who frequent the area.

Inspector Erica Crawshaw said: “There has been an entrenched prevalence of sex workers in Upper Edmonton and local residents want action. This won't be a quick fix but we will implement strategies that are achievable.

“Our aim is to engage with the women and target those who exploit and control them rather than tackle it with enforcement.”



Sales & Lettings Agents



Chamberlains

chamberlainsestates.com

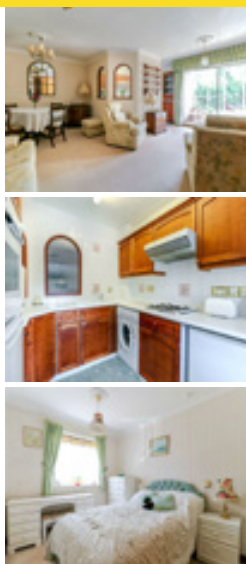
# Chamberlains Estates

Residential Sales & Lettings Agents

020 8366 3551

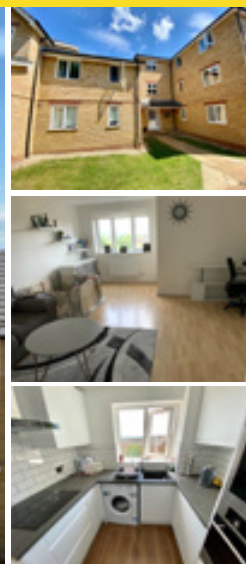
Free professional video tours for all new Sales & Lettings instructions!

VIDEO TOUR



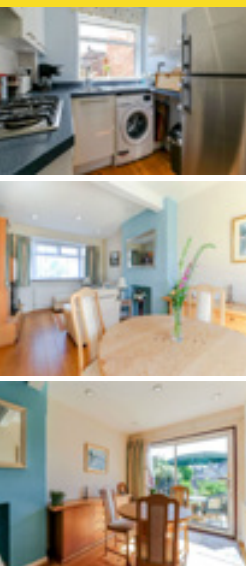
TWO BEDROOM FIRST FLOOR RETIREMENT FLAT – EPC C72  
Cavell Drive, Enfield EN2 7PR #Stay Alert **£279,950 Leasehold**

VIDEO TOUR



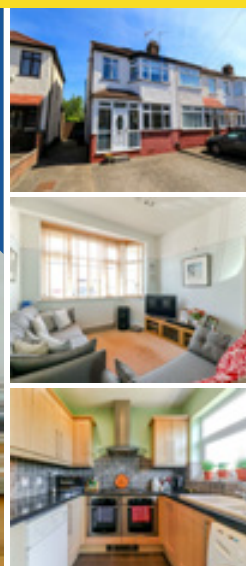
SUPERB TOP FLOOR, TWO BEDROOM APARTMENT WITH ENSUITE – EPC C71  
Kirkland Drive, Enfield EN2 0RJ #Control the Virus **£340,000 Leasehold**

VIDEO TOUR



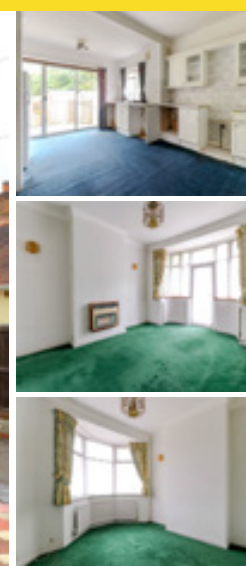
A WELL PRESENTED THREE BEDROOM TERRACED HOUSE – EPC D68  
Baker Street, Enfield EN1 3QY #Save Lives **£450,000 Freehold**

VIDEO TOUR



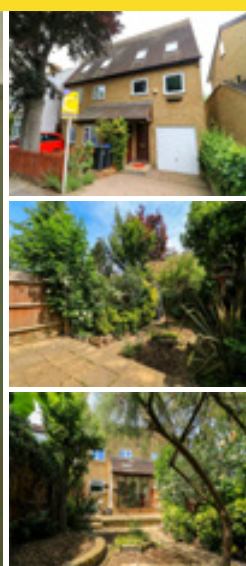
WELL PRESENTED EXTENDED FOUR BEDROOM FAMILY HOUSE – EPC D61  
Carisbrook Close, Enfield EN1 3NB #Stay Alert **£575,000 Freehold**

VIDEO TOUR



A CHAIN FREE, SPACIOUS, OLDER STYLE, SEMI DETACHED BUNGALOW – EPC D65  
Links Side, Enfield EN2 7QU #Control the Virus **£600,000 Freehold**

VIDEO TOUR



SEMI DETACHED HOUSE WITH SPACIOUS ACCOMMODATION – EPC D65  
Chase Side, Enfield EN2 6NB #Save Lives **£625,000 Freehold**

arla | propertymark  
PROTECTED

naea | propertymark  
PROTECTED

The Property Ombudsman

tsi  
APPROVED CODE  
TRADING STANDARDS.UK

rightmove

OnTheMarket



Enfield Community Orchestra performing at Christ Church URC in Chase Side, before the pandemic



## Orchestrating charity donations

*Enfield Community Orchestra trustee Hayley Butchart on how a series of quiz nights has helped support local charities*

**E**nfield Community Orchestra is an amateur orchestra based in Enfield. Apart from making music, we like to focus on supporting the local community, which we usually do by providing concerts for local residents to come along and enjoy.

Unfortunately, performing concerts at the moment is impossible. So instead, we have decided to find other ways to support the local community during this strange and uncertain time. As a charity ourselves, we understand the strain that this current time has had, especially to those services which are important in helping vulnerable people.

Adrian Bullock and I, two trustees of Enfield Community Orchestra, have been hosting a virtual charity quiz night every Tuesday at 7.30pm, supporting a different charity in Enfield each week.

So far we have supported Age

UK Enfield, North Enfield Foodbank, Citizens Advice Enfield, Wildlife Rescue and Ambulance Service, Mind Enfield, and Noah's Ark Children's Hospice. A total of over £1,000 has been raised during these events.

It was after running this series of successful quiz nights for our members during lockdown that we thought it would be a great idea to open up this fun and enjoyable social event to a wider audience – and at the same time raise some money for other charities in Enfield that are in need of help during this crisis.

We have had a fantastic response from participants who have said that Tuesday evenings are the “highlight of their week” and they are thrilled to be able to support so many different charities in Enfield during this difficult time.

Our membership is diverse with

players from all different walks of life. We all share the universal language of music-making under the leadership of our inspirational conductor Eddie Morgan. Even during the lockdown we have enjoyed musical challenges, which have kept us inspired and motivated. However, we are still longing for the day when we can all practise together and, more importantly, perform for our audience again!

We are looking forward to meeting some new members, as we have had some enquiries from local people who have decided to start playing once more. We want to take this opportunity to thank everyone who has joined us in supporting these amazing local charities and in welcoming everyone back in the near future.

For more information about Enfield Community Orchestra and to get involved with one of their quiz nights: Visit [enfieldcommunityorchestra.co.uk](http://enfieldcommunityorchestra.co.uk)

## Scrubbing up

Ros Lucas has been volunteering with a community sewing group in Southgate to help NHS workers during the pandemic

**I**t was in April that Lesley asked – via the Nextdoor website – for volunteers to make scrub bags, so that all NHS staff and carers in the community had something to carry their scrubs and gowns in.

A WhatsApp group was set up by Sylvana who volunteered herself as an administrator, as well as a delivery courier, together with her daughter Ellie-Rose who, as a beginner, quickly became adept at using a sewing machine. Xenia, an ex-student of a teacher who was volunteering, proved to be an excellent motivator and the most productive crafter of bags and face masks – she even started making some for local pharmacies and others who requested them.

Our group grew in number to 19 listed volunteers, ranging in age from 14 to more than 80 years old, with offers of materials, sewing and delivering. Material was also very generously donated to us from a local clothing manufacturer, Fosby of London. Other material came with a great deal of sentimental value – one lady donated bedsheets made by her

late father. Another donated the material used to wrap a last gift given from a loved one, bringing her comfort in knowing it would be used as a scrubs bag for the NHS.

As materials ran short for a while, one of our volunteers, a supporter of Saracens Rugby Club, persuaded the club to donate one thousand surplus flags! This sped up our output because the seams on the flags were already finished. There have been other problems to overcome – broken sewing needles or other issues, for which the more experienced people in the group have found solutions. We have also expanded to make other items such as masks and scrubs themselves.

With well over 1,000 bags having now been delivered, letters of thanks from those who received them have been very pleasing and the whole group continues to be supportive of each other, even those who, for one reason or another, have had to stop. Overall it has been a fantastic example of neighbours in the community coming together to achieve something special.



Xenia, one of the volunteers for the 'Southgate NHS Scrubs Bags' community group



# Delivering for the community

*Dionne John helped set up a food delivery service aimed at Enfield's African-Caribbean residents*



Together Our Community Survives (TOCS) volunteers have been helping deliver food to the African-Caribbean community Credit Enfield Council

The aptly named Together Our Community Survives (TOCS) is an amazing project delivering authentic African-Caribbean food to support local people who are shielded and

self-isolating during the pandemic, as well those who are experiencing financial hardship.

The TOCS project is led jointly by Enfield Caribbean Association and Street Watch Edmonton. The

project started at the height of the pandemic with donations from Paradise Patties and contributions from other local small grocery stores. We had just two volunteers delivering food to only a handful

of people. Now our volunteers support up to 180 elderly and vulnerable with a weekly basket of groceries.

The support from the community, Enfield Council, and local businesses in Edmonton Green Shopping Centre – such as Rebecca's Shop and Letherbarrow – has been exceptional. With the assistance of Jamaicans Inspired UK, brand names such as Grace Foods UK, Waitrose, Port Royal Patties and Windrush Bay have been mobilised and stepped up to the mark.

We also received a statement of support from renowned actor Rudolph Walker (known for his roles as Bill Reynolds in ITV sitcom *Love Thy Neighbour* and as Patrick Trueman in BBC soap *EastEnders*). He said: "It's only by working together that we could support our community during Covid-19."

Omar from Brother Fruits and Veg, a market stall holder at Edmonton Green, has also helped us. He added: "It's a pleasure to support the community."

Before Covid-19, Street Watch Edmonton supported the community with regular after-school

patrols. Today, we are still supporting the community, but this time in partnership with Enfield Caribbean Association to deliver food. The solidarity and generosity of the African-Caribbean businesses and others have been unprecedented.

Oveta Mcinnis, chair of Enfield Caribbean Association, said: "This is a time when we have come together in collaboration to support our African-Caribbean elders and most vulnerable. Our volunteers are giving their time freely to ensure that the needs of the community are met."

There's still more to be done and we are relying on volunteers and donations to keep the project going to support our elderly and vulnerable in Enfield. If you can help distribute food parcels, please contact the TOCS team using the details below. We are also appealing for donations via Just Giving – we have raised more than £2,500 so far.

**Find out more about Together Our Community Survives (TOCS) and pledge your support:**

**Call** 07915 919 524  
**Email** TOCSenfield@gmail.com  
**Facebook** /TOCSenfield  
**Twitter** @TOCSenfield  
**Visit** justgiving.com/crowdfunding/tocsenfield

## Opening up again

**Nnenna Anyanwu, chief executive of Citizens Advice Enfield, on the re-opening of its charity shops**

Citizens Advice Enfield's two charity shops in Palmers Green re-opened for customers last month.

Our charity shops play a vital role in generating much-needed income to support the work of the charity. As a key service, our core work has continued throughout this pandemic, to support the needs of local Enfield residents going through challenges – with some of them very vulnerable.

In the first month of the lockdown we helped 675 clients with their problems. To enable us keep the service running, we adapted the way that we interact with our clients, purchasing additional IT equipment and mobile phones so that our advisers could work from the safety of their own homes.

Many of our residents had employment and housing prob-

lems during this time. As thousands of people lost their jobs or self-employment income, we helped them to claim Universal Credit and understand how to access government support. We have also helped people who would have been made homeless to remain in their homes. Nationally, Citizens Advice has helped 380,000 clients with their problems over the past three months.

The Citizens Advice Enfield charity shops had of course been closed since March, in response to the coronavirus pandemic. But we were excited to re-open the stores after the government confirmed that non-essential retailers were allowed to re-open. This has been an incredibly challenging time for all shops on the high street and, with high fixed costs in rent and staff salaries, it has been very dif-

ficult to make ends meet. Sadly, it could be years before we recover from this pandemic.

We are doing everything we can to ensure the safety for our customers. We have purchased the required PPE for staff and enforced social distancing as necessary. Cleaning of surfaces, doors and equipment will be done regularly throughout the day.

***"We have seen great examples of kindness, togetherness and community spirit"***

Donated goods are being isolated for 72 hours, then inspected and cleaned thoroughly before going on display. Fitting rooms will be closed for health and safety reasons – our returns policy has been amended to reflect this.

We want to make sure our customers know that the goods we sell are safe and virus free and in order to allay any concerns our customers may have. Our cleanliness policies will be under constant review.

On the plus side, we have received many donations in recent weeks. This is the result, it seems, of people using the

people still not working and the furlough scheme being phased out, many of our Enfield residents who are already on a low income may not be able to afford new clothes. Our shops are here to help, as we sell excellent quality pre-owned clothing and other goods.

We are proud to be part of the Enfield community and to be much loved by the residents. We look forward to welcoming shoppers back to our shops at 370 Green Lanes (opposite The Fox pub) and at 40 Green Lanes, just south of the North Circular.

Antonia Oberoi, the senior manager of Citizens Advice Enfield's charity shops, says: "We have seen great examples of kindness, togetherness and community spirit over the past few months, and Citizens Advice Enfield thank you all for your continued support."

lockdown as an opportunity to 'spring clean' their houses. But the need to quarantine all items for 72 hours means we have very limited space to accommodate more donations at this time.

We are very aware that with many



The entrance to Worcesters Primary School in Goat Lane, Forty Hill



## Concern over school re-openings

BY SIMON ALLIN,  
LOCAL DEMOCRACY REPORTER

Councillors have agreed a cautious approach to school re-openings after hearing concerns over the potential coronavirus risk to staff and pupils – particularly

those in vulnerable groups.

Enfield Council's scrutiny committee resolved to support the local authority "to take whatever action is required in its duty of care to keep the children in the borough, and staff, safe in our schools."

Schools in Enfield – closed to most children since March because

of the Covid-19 pandemic – started opening their doors to more pupils from Monday 1st June in response to government guidance. Others followed later in June. All local authority-run schools have completed risk assessments.

At the scrutiny committee meeting last month, several council-

lors expressed concerns about the safety of staff and pupils, especially those in higher-risk groups such as black, Asian and minority ethnic (BAME) people.

It came after the Enfield branch of the National Education Union

***"Many of our members are still frightened"***

(NEU) claimed the risk assessment for school staff was inappropriate, as it was originally designed for NHS staff working in an environment with better safety measures.

Dr Glenn Stewart, the council's assistant director of public health, told the committee the evidence was that children "are very bad at getting the virus and passing it on". He added: "We are talking a very small risk for children."

Labour councillor Ayfer Orhan highlighted the NEU's concerns and asked why a more appropriate risk assessment had not been drawn up. Peter Nathan, the council's director of education, said the assessment was intended to "identify issues related to BAME staff". He added: "Schools have been using this and there has been such positive feedback from schools, because it has enabled staff to talk to school leaders and openly discuss anxieties about the return to work."

Dr Stewart said he did not agree

that the risk assessment was inappropriate, but Cllr Orhan called for "proper answers" to the NEU's questions and called for education chiefs to send a full response to the union.

Councillor Susan Erbil, another Labour member, asked: "Can this council guarantee that BAME staff will be risk assessed so that they are treated as high risk but also ensure that BAME staff will not suffer employment repercussions?"

Tony Theodoulou, the council's executive director of people, said: "All staff have been risk assessed. We have heard from school HR [human resource] teams; what they are encouraging is individual conversations with staff to consider the risks, to find ways of reducing that risk."

"At the moment, the overwhelming majority of issues are being resolved positively. The risk assessment covers ethnicity, but it also covers gender and age."

At the end of the discussion, Cllr Aramaz proposed the council reconsider the decision to extend the opening of schools.

An amendment supporting the local authority to keep staff and children safe was passed by the committee's Labour members, with the Conservatives abstaining.

Following the meeting, NEU Enfield issued a statement criticising the council's approach to re-opening schools. It said: "Many of our members are still frightened and were not comforted by the rhetoric raised in this meeting."

## Rubbish causing a stink

BY SIMON ALLIN,  
LOCAL DEMOCRACY REPORTER

Overflowing rubbish bins and fly-tipped waste have left residents across Enfield subjected to "sickening smells" during the coronavirus outbreak, according to an opposition councillor.

Councillor Lindsay Rawlings, shadow cabinet member for environment, called on Enfield Council to tackle the problem after receiving "far too many reports" of large amounts of dumped waste.

The council reduced both general waste and recycling bin collections to fortnightly at the start of March, just before the

pandemic began. The subsequent lockdown then necessitated the closure of Barrowell Green Recycling Centre in Winchmore Hill until mid-May.

Cllr Rawlings, a Conservative member for Town ward, said: "I am hearing far too many reports from across the borough of large amounts of waste being dumped. I've seen spots where as soon as one pile is cleared more is being left."

"With the hot weather, residents are being subjected to sickening smells. With children off school and people at home, they should be able to enjoy their surroundings without having to continually avoid piles of rubbish."

While Barrowell Green partly re-opened on 11th May, visitors have to make pre-booked appointments and a range of safety measures are in place at the centre to protect staff and visitors from Covid-19, reducing the range of items that can be taken there.

An Enfield Council spokesperson said: "In line with our neighbouring boroughs, Barrowell Green Recycling Centre re-opened when it was thought safe to do so and is operating a booking system with some restrictions on what can be brought to the centre."

"We will continue to review ways in which we can increase the materials taken to the centre while ensuring that the site oper-

ates efficiently and social distancing measures can be maintained.

"Enfield Council has offered a comprehensive waste and recycling service while at the same time being mindful of the health and safety of residents and staff. We have assessed the needs and

requirements of our residents whilst encompassing the guidelines issued by public health bodies and the government."

The spokesperson pointed out that the council had continued to operate bulky waste collections during the coronavirus pandemic.





# No time to waste

Enfield North MP Feryal Clark speaks to James Cracknell about her first six months in the job

**W**hen Feryal Clark was elected the new MP for Enfield North in December, she couldn't have imagined how extraordinary her first six months in the job would be.

The former Hackney councillor hadn't even finished setting up her office and hiring her staff when the pandemic arrived in March. The nature of her job would immediately change, as face-to-face surgeries with constituents ended, parliament moved online, and the immediate priority for everyone was getting help to those who needed it.

Starting out as a new MP is always a daunting challenge, and the dominance of Brexit over British politics had already made it a tough time to be joining the House of Commons. So what motivated Feryal to seek the Labour Party's nomination for the seat?

"What motivated me was being involved in local government and the public sector for the past 14 years," says Feryal, who first sought to be Labour's parliamentary candidate for Enfield North in 2013, when Conservative Nick de Bois held the seat.

"A normal route in is to be a lawyer or to work for other MPs – I was a scientist working in a pathology lab. I wanted to get into politics to help out my local area in Hackney."

First elected as a councillor in 2006, Feryal became a full-time politician in 2010 when she joined Hackney Council's cabinet – the start of the 'austerity era' for local government. "What kept me in politics was the satisfaction I get from influencing change and improving my area for people. I gave up my career in science and dedicated myself to it. But I realised the changes I wanted to see needed to come nationally – in local government you keep banging your head against the wall."

While not a local resident, Feryal already had plenty of connections to Enfield borough – including running a cafe in Edmonton.

"I had family here and spent my childhood going to Trent Park. When I left university I got a job in the NHS and I was thinking about going back to uni, but I needed more money and I ended up starting a greasy spoon cafe in Fore Street.

"Running a business is hard and it's a lot of dedication and long hours. I take my hat off to anyone who does it. The margins are so small. After a year I went back to the NHS."

The opportunity to finally stand to



Feryal Clark was elected the new Labour MP for Enfield North after winning more than 51% of the vote last December. Credit: Parliament.UK

become an MP came last year when Joan Ryan quit the Labour Party and announced she would not contest the next election. Feryal beat a long list of contenders to become Labour's candidate for Enfield North – arguably a tougher contest than the one she faced in the general election itself. Although Conservative-held as recently as 2015, Labour's majority had risen to more than 10,000 votes by 2017 and the seat was no longer considered marginal.

"I know I was expected to win, but 2017

was an unexpected result and it had been 20 years of Joan Ryan versus Nick de Bois. I didn't think it was a guarantee that I would win and at some points I thought I might not win. I didn't take it for granted."

What were Feryal's first impressions of Westminster? "Going into parliament was a real eye opener. It feels like you are in Hogwarts. The building is overwhelming, it is very old and it's a like a maze!

"When we went back in January we had the first votes on Brexit, but I made all these

plans to meet people and start working on certain issues, then Covid-19 started."

Prior to the coronavirus outbreak, Feryal had spoken several times in parliament, often to raise Enfield's disproportionate public health funding allocation. Since the pandemic, it has been more difficult. "I had a lot of other issues I wanted to raise, but since Covid-19 I have only been able to speak once. It deprives me of being able to represent my constituents. Parliament returning to Westminster doesn't change that – only those who have been selected can speak.

"The physical voting takes away the opportunity of MPs with health conditions or a vulnerable family member from being able to participate. It is incredibly unfair. The whole situation is a farce."

At the start of the pandemic, Feryal helped out where she could. "I spent some time volunteering with the Felix Project and doing deliveries with [council support programme] Enfield Stands Together, delivering packages to residents in my constituency."

How did the health crisis impact on casework? "We spent a lot of time on the phone to embassies, trying to get constituents back to the UK. Now we have got businesses and self-employed people being impacted and people who have fallen through the gaps.

"The casework has definitely doubled. There are a lot of complex cases."

Feryal's first six months also included a Labour leadership contest. She voted for Lisa Nandy, but says she is now fully behind Sir Keir Starmer.

"I backed Lisa because I thought it was about time Labour had a female leader, but I have not been disappointed by Keir. He is doing a fantastic job. I think the party is 100% behind his leadership."

What should Labour do to win the next election? "We are so far away from that [the election] we don't know what the country will look like after this. I am certain we can't go back to the age of austerity and cuts to the public sector.

"Whatever the country looks like, the recovery has to be done in collaboration with local authorities, and those people working closely to the ground. There will be lots of lessons to be learned but I think if local authorities were brought into the fold early on we could have dealt with issues faster and better.

"I believe we are far too centralised. If you look at the countries that have dealt with the pandemic well, they have a lot of devolved power."



Boris Johnson addresses the nation outside 10 Downing Street following his return to work in April, when he was hospitalised with Covid-19  
Credit: Pippa Fowles/No 10 Downing Street



# Enfield has been failed by government

*Andrew Warshaw on why he believes the government has lost its grip on the pandemic*

The dire situation in Enfield's care homes, coupled with the government's failure to deliver on its pledge to provide local authorities with sufficient funding to handle the Covid-19 crisis – issues both highlighted in last month's *Dispatch* – brought home what a sham-bolic, uncaring and fact-spinning regime Boris Johnson is leading.

The prime minister himself – high on ego-driven, cheerleading bombast, low on actual ability to govern – is arguably the worst culprit of them all. Every day we're subjected to a stream of phoney rhetoric and platitudes; from Matt Hancock's laughable assertion the government had "thrown a protective ring" around care homes (tell that to those in Enfield), to utter confusion over schools, to claiming Britain is developing a "world-beating" track and trace system.

In Enfield, our local charities and volunteers should be applauded for so many acts of kindness and generosity. We have our own problems – notably the borough's social and economic split either side of the A10 – but the powerful and peaceful Black Lives Matter vigils were a credit to our multicultural community and a proud example of how to get the message across.

At a national level, however, our politicians have been cynically changing the script to fit the narrative, whenever they are boxed into a corner, to explain why Britain has been so catastrophically behind the 'eight ball'. More deaths than anywhere else in Europe is inexcusably scandalous and cannot be glossed over by facile explanations. How many times have you screamed "answer the question!" during those daily briefings, yearning for an honest answer and bemoaning the obfuscation and spin thrown back by whichever mouthpiece is on the podium?

'Following the science' is now a tired argument, especially given the scientists and doctors can't seem to agree among themselves. I'm surely not the only one to notice how, when any experts present evidence the government doesn't want to hear – like how many deaths could have been avoided if we'd acted faster and more efficiently – they soon disappear.

While other public figures were forced to resign for far less blatant Covid-19 rule-breaking, Dominic Cummings was spared. We know why; because he and Johnson are joined at the hip. Without his most trusted advisor, not even an elected

official, the prime minister can't seem to function. His whole pretence of a strategy is based on self-preservation. What does that tell us about collective leadership?

The brutal truth is that senior ministers were appointed to deal with Brexit. The knock-on effect, is that not one of them has enough nous or experience to deal with anything as challenging as Covid-19. To compensate, they bombard us with tub-thumping drivel disguised as jingoistic patriotism and put in place a series of inconsistent measures that are either the right thing at the wrong time; too little, too late; or, when it comes to easing the lockdown, arguably too much, too soon.

Whatever lies ahead, don't be fooled that Britain is suddenly leading the way. It's a bit like being five goals down and then being overjoyed at pulling three back. This complacent government must ultimately be held to account for a shameful catalogue of misguided, ill-advised decisions for which no-one has had the guts to apologise.

Whether, in Enfield, you voted left, right or somewhere in the middle at the last election, we need answers to the government's constant mixed messages and rank incompetence.

## Help save Cockfosters

*In our latest councillor's column, Cockfosters ward member Alessandro Georgiou speaks out against TfL's car park plans*

In Cockfosters we are under threat from Transport for London (TfL) and its disgraceful proposals to replace our well-used car park with four 14-storey tower blocks containing 370 flats.

These proposals not only spell the end for commuters using the park-and-ride provision at Cockfosters Station but also ease of use for those that are disabled or have accessibility issues. In addition to the loss of 400 parking spaces, the residents of the new flats will not have any provision for parking. TfL has clearly illustrated the lack of respect for all of these groups.

Another area of major concern is what the effect of an additional 1,000 people living in Cockfosters will have on our local services. All our schools are oversubscribed, putting additional pressure on parents that currently live in the area. Our local GP surgery also currently has a waiting list, with waiting times of up to two weeks for an appointment. It is all well and good bringing more people into Cockfosters, but TfL clearly does not care about the existing residents.

The buildings themselves are completely out of character with the area. Four huge high-density tower blocks on the edge of the Green Belt and the outstanding Trent Park will be a blight on the beautiful character of Cockfosters and the whole area, ruining the views from miles away. The planners just want to erect concrete towers, to the lowest specification and cost, to maximize their profits – at

incalculable cost to the residents of Cockfosters.

Equally upsetting is the way TfL plan to accommodate the 40% of 'affordable' rented flats within the development. Those on lower incomes will be segregated into one of the towers, ensuring the 'haves' and 'have nots' don't mix. This in my view is an absolute disgrace.

It is outrageous of TfL to think they can transplant a high-

density housing scheme, designed for inner city living, into the middle of a green suburb. We all understand people need homes, but this 'build them high and build them cheap' approach is not the way to solve the housing crisis.

Visit [savecockfosters.co.uk](http://savecockfosters.co.uk) to find out more about the campaign against this development.



Cllr Georgiou has represented Cockfosters since 2018

Cllr Georgiou is one of three councillors representing Cockfosters ward, alongside Edward Smith and Elaine Hayward (all Conservative). Surgeries are available by appointment.

Call 07812 673 060

Email [cllr.alessandro.georgiou@enfield.gov.uk](mailto:cllr.alessandro.georgiou@enfield.gov.uk)



# With no exams, what next for students like me?

Enfield student Kaan Kartal gives his view on the pandemic and how it has affected the younger generation

Is lockdown worth the cost to students' education? For the first time in Britain since 1888, there will be no exams this summer.

For a lot of students it has made two years of sacrifices worthless. Instead of the constant looming pressure of exams hanging over us, we have been dealing with a pandemic. With the closure of schools and youth clubs, there are few other avenues for the younger generation to turn to – especially under-privileged students who might have been looking to achieve their dreams in their exams.

What if this shift in lifestyle can also be beneficial? The spare time is invaluable, as it gifts many young people of my age that sense of perspec-

tive some of us so desperately needed. Living such fast-paced lives and with no room for real reflection, it has allowed an opportunity to look towards our future.

The pandemic has given me time to decide where I want to see myself and map out how to get there. Many younger people can now have an inner dialogue and reflect. It doesn't need to be just filling out a form on careers day wishing you'll be assigned the best role, but initiating that conversation with yourself about where you see yourself thriving.

The education system wasn't introduced to test us blindly but to build transferable, technical skills and a core background of knowledge that will carry us through life.

The school work was hard, but never wasted, because the wisdom gained is precious. Now with not much else to do, it allows us the time to learn a new skill or study a field we always wanted to explore.

As our thoughts focus towards how the lockdown can be lifted safely, and we're considering the impact of re-opening our schools, it's fair to say that the lack of formal education during the pandemic will affect the next generation. We will see the true cost of cancelling exams soon, but I remain optimistic that there will be some positive impacts as well.

I hope that younger people will have spent time gaining more confidence in planning out their futures.

Advertisement

# LETTERS

## Send us your letters

Got an opinion on something in Enfield? We accept letters of up to 150 words from people and organisations in the borough. Email [EnfieldDispatch@socialspider.com](mailto:EnfieldDispatch@socialspider.com) before the next deadline on **Tuesday 21st July**.

## No time to Brexit

*Dear Enfield Dispatch*

The government appears on course to crash us out of the EU negotiations. The resulting 'no deal' Brexit crisis will be on top of the catastrophic health, social and economic impacts of the coronavirus pandemic. Inevitably, this will hit the poorer parts of Enfield the hardest – those areas which have already been worst affected by the coronavirus crisis.

The government cannot deal with two major crises at once. It must focus on defeating the coronavirus pandemic, not compound it with an unnecessary government-made crisis. This is not about 'leave' or 'remain' – it is about what is best for Britain, and for Enfield at this time.

Please contact your MP to demand the government focus on one crisis at a time, and legislate for a two-year extension to the EU transition period which would secure the best deal for Britain.

**Steven Adderley**  
Palmers Green

## Get checked

*Dear Enfield Dispatch*

Cervical cancer screening rates in Enfield are still falling below the national target of 80%. NHS data reveals only 66% of eligible women aged between 25 and 49 were screened for cervical cancer in Enfield between September and December 2019. For women aged between 50 and 64, 76.5% were tested during this period after receiving an invite from their GP.

Cervical screenings continue to save lives, so it is very concerning to see that testing rates are still falling below the national target, and in many cases actually getting worse. On top of this, we must also remain alert to how the Covid-19 outbreak may exacerbate this already worrying situation.

We urgently need citywide leadership and a renewed focus on this issue. The government can also play their part by looking at how screenings can be made more accessible and ensuring funding and resources are in place to reach more women.

**Joanne McCartney**  
London Assembly member  
for Enfield

## Defending Meridian Water

*Dear Enfield Dispatch*

We feel obliged to address the panic-mongering contained in the piece about Meridian Water published in your last edition [*Criticism of Meridian Water must be heard*, Page 9, Issue 21]. The scheme will pay for itself over the course of its construction and deliver a reasonable return to the council. No land outside Meridian Water will need to be sold, nor cuts made to council services to fund it. In short, the project – one of the most ambitious local authority managed schemes in the UK – will bring money into Enfield and directly benefit residents.


We plan to create 6,000 additional jobs by attracting small and medium-sized enterprises to the area, while retaining existing employers such as Ikea and Tesco. Our employment strategy seeks to diversify opportunities in Enfield and create a vibrant jobs market which enables local residents to get good jobs.

We will have sufficient space for homes on the site, as strategic industrial land will be de-designated. The master plan designates 30% of the total space of the development for parks and open space – considered best practice in the industry and certainly not a "deficit" by any gauge.

Lastly, a vast number of the homes on Meridian Water will be genuinely affordable. This will be achieved by selling a percentage of properties on the open market to subsidise social housing. This is necessary to ensure we not only provide sufficient social housing, but also deliver the project's financial aims. Irrespective of any other consideration, none of the homes will be sold overseas.

Meridian Water will be transformational. The council is committed to delivering genuine benefits for the people in our borough and we're sure it will be held up as an exemplar of public service delivery for many years to come.

**Jeremy Chambers**  
Director of law and  
governance, Enfield Council



**Do you need to find your pet a loving new home?**

Wood Green can help. Our pet collection service – for cats and small animals – can collect your pet from your home, making it easy for you!

**WOOD GREEN**  
The Animals Charity

To find out more and book an appointment, please call 0300 303 9333 or email [pet.support@woodgreen.org.uk](mailto:pet.support@woodgreen.org.uk)



# What you told us about living through the pandemic

*Emma Friddin from Healthwatch Enfield discusses the feedback received from a recent Covid-19 survey*



The pandemic has seen certain activities restricted, including sitting on benches

Thank you to all of you who contacted us to share your stories of how coronavirus has impacted your health and wellbeing. In just a short time, more than 150 Enfield residents told us about how life has been during the pandemic.

Even though the Covid-19 outbreak has impacted everyone, people have experienced it in different ways. Almost one in three of you told us that the main issues were problems relating to your mental health and/or not socialising, seeing family

and friends, and feeling isolated. You said you were finding it difficult not doing your usual activities and following your normal routines.

Some of you told us that you were also struggling with accessing healthcare, despite messages from the NHS stating if you are worried about your health you need to seek medical advice.

These are the kinds of things we will be feeding back to the people who make decisions around our health and care, as well as making recommendations based

on what you have told us. Having begun analysing all your responses, we plan to write an anonymised report about how coronavirus is impacting people in Enfield, with suggestions of what local health and care services can do to help you. We hope to publish this report this month, so do keep an eye out on our website and in our newsletter.

In our survey we also asked you to share any positive experiences you have had during the coronavirus crisis, and many of you did. Some of you told us how “amazing” it has been to see the “acts of kindness towards others” in the local community, explaining that it has been “heart-warming” to see “neighbours look out for each other”.

Some of you also told us that you have “cherished” the opportunity to spend more time with members of your household, doing things you don’t usually have time to do, such as eating meals together, sharing thoughts and feelings, and playing games.

Many of you described how you have embraced technology such as video call-

ing to keep in touch with loved ones outside your household, reading stories with grandchildren and completing virtual quizzes with friends.

As well as having more time to devote to loved ones, some of you explained that you have had more time to look after yourself, enjoying activities such as spending time in the garden, cooking, and baking; activities which are important to keep up when trying to live healthier life styles.

Thank you to all of you who responded to our survey and shared your experiences with us. This means that we can, in turn, share this information with key decision makers, so they understand what your main concerns are and what information and support you need.

For more information about Healthwatch Enfield and to get in touch:

Call 020 8373 6283

Email [info@healthwatchenfield.co.uk](mailto:info@healthwatchenfield.co.uk)

Tweet @HealthwatchEnf

Visit [healthwatchenfield.co.uk](http://healthwatchenfield.co.uk)

**healthwatch**  
Enfield

Advertisement

Your Enfield and Tottenham Slimming World groups are now virtual



that  
Slimming  
World  
feeling!

You can find details of your nearest consultant at: [slimmingworld.co.uk](http://slimmingworld.co.uk)

**NHS**

North Middlesex  
University Hospital  
NHS Trust

## Can you help lead us to outstanding?

We're looking for two new Associate Non-executive Directors to join our Board and help lead our continued improvements.

Candidates need senior level experience, and either a clinical or financial background.

For more information, visit [www.improvement.nhs.uk](http://www.improvement.nhs.uk) and search L2197, then arrange a call with our Trust Chair, Cedi Frederick.

Deadline for applications is 11am, Wednesday 22 July 2020.





Advertisement

follow @bountagu or visit [www.bountagu.com/subscribe](http://www.bountagu.com/subscribe)

# BOUNTAGU BIG LOCAL N9

Older People &amp; Community • Children &amp; Young People • Developing Local Opportunities • Environment &amp; Outdoor Space



## Get involved with Bountagu

We're especially keen to hear from people whose homes are inside the Bountagu area.

### What Is Bountagu?

Bountagu Big Local is a resident-driven project with the ambition to support and improve our community, and to "leave a legacy of beauty, hope and aspiration for the future".

Decisions and activities are led by our Partnership Board and subgroup teams, which are formed of local volunteers passionate about making a positive and lasting difference to our area.

Our efforts are focused across four main priorities comprising: Older People & Community, Children &

Young People, Developing Local Opportunities, and Environment & Outdoor Space, as well as on the legacy our project leaves behind.

We meet regularly to plan and organise our projects, working hard (but remotely) during lockdown to provide support where we can, and are looking forward to restarting the activities and plans that had to pause.

We have a growing social media presence as well as producing posters, flyers, and a 20 page quarterly newsletter/magazine which is distributed through 2,100 letterboxes in our area, updating our neighbours

on our own progress as well as promoting other local groups and projects.

Bountagu exists to help this neighbourhood and the people in it, and the best way to make that happen is to have YOUR help in everything we do!

We need project leaders, and organisers as well as do-ers and supporters.

Do you have the passion, energy and interest to join a subgroup project team or our Partnership Board?

To find out more, call 020 8807 5827 or email [info@bountagu.com](mailto:info@bountagu.com).

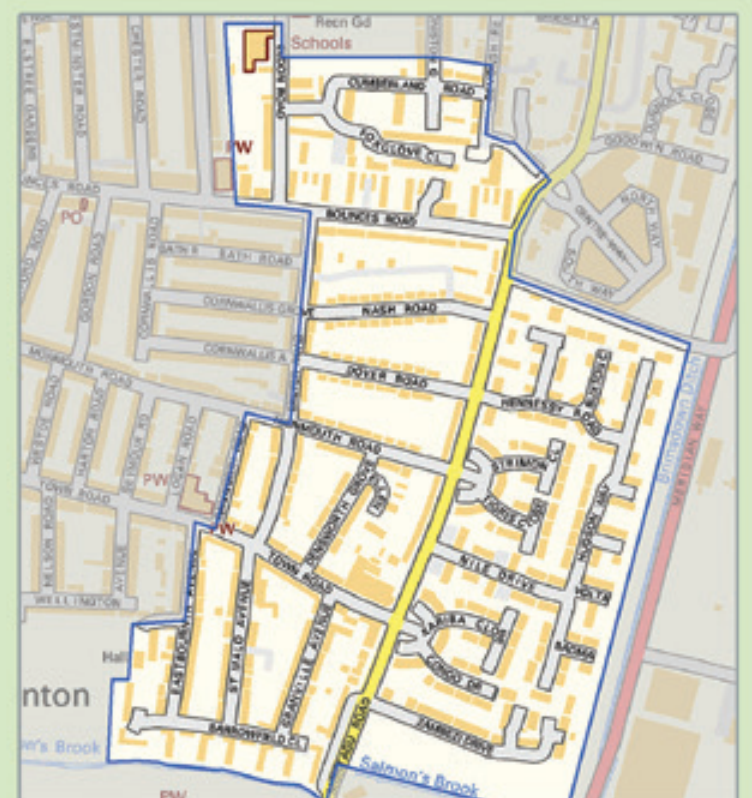
### What is a 'Big Local'?

Bountagu is one of 150 'Big Local' areas awarded £1m over 10 years to "transform and improve the lives and places where they live". Big Local support comes from the National Lottery Community Fund through Local Trust. Bountagu is also supported by CVSBEH.

### Do you know if you live in the Bountagu area?

The Bountagu area is part of the Lower Edmonton Ward, in the east of Enfield borough, and includes about 2,100 households and over 5,000 local people.

The boundaries on the north are Cumberland and Walbrook, on the east and south are Meridian Way and Salmon's Brook, and on the west are Eastbournia / Ranworth / Exeter / Eldon. It is one of 150 'Big Local' areas in England.



To see the full list of addresses that make up the Bountagu area, as well as a Google Map, visit [www.bountagu.com/map](http://www.bountagu.com/map).

## Supporting Local Ideas & Projects

Do you have an idea to help our neighbourhood and the people in it during this difficult time?

Are you struggling to deliver a valuable service to the Bountagu community? Let's discuss how we can help.

Get in touch!

020 8807 5827 | [info@bountagu.com](mailto:info@bountagu.com)

[www.bountagu.com/littleideas](http://www.bountagu.com/littleideas)



# Councillors demand pause to incinerator plans

BY JAMES CRACKNELL

**T**wo Enfield councillors are pleading with the boss of North London Waste Authority (NLWA) to halt development of a new Edmonton incinerator.

With the row over the project's environmental credentials refusing to die down, Labour councillors Vicki Pite and Yasemin Brett recently wrote to Clyde Loakes, chair of NLWA and deputy leader of neighbouring Waltham Forest Council, demanding the scheme be paused. They want to allow more time for greener alternatives for disposing of waste from seven London boroughs to be considered.

Cllr Loakes ruled out a review of the proposed £1.2billion 'energy recovery facility' (ERF) in April, following a campaign launched by Extinction Rebellion and other local green groups to have it halted over fears it would "lock in" carbon emissions for decades to come.

The letter from Cllr Pite and Cllr Brett, also copied to the borough's three MPs, cites the "legislative imperative to cut carbon emissions", rising costs, the declaration of a 'climate emergency' by Enfield Council and other local authorities, as well as falling recycling rates, as further reasons to ditch the new incinerator.

An NLWA meeting was due to be held as the *Dispatch* went to press but it is not thought likely that the waste authority

would consider a U-turn on its plans, which won government approval in 2017. Early work to prepare the construction site at Edmonton EcoPark, adjacent to the River Lea, began last year. Once built the existing incinerator, in operation for nearly 50 years, will be demolished.

Cllr Pite and Cllr Brett warn in their letter: "Our view, having scrutinised available documentation, is that a smaller ERF designed to deal with non-recyclable waste from the seven authorities only should be on the table, with interim

***"In a declared climate emergency all CO2 emissions must be brought under rigorous scrutiny"***

capacity to deal with some recyclable waste while recycling levels improve and over-dependency on plastics declines.

"We feel sure that residents were not aware the NLWA intended both to import waste to Edmonton from beyond the boundaries of the seven North London boroughs and to permanently abolish the composting facility, meaning our green

waste will be exported and opportunities for compost and biogas lost."

Campaigners argue that climate change has worsened significantly since the new incinerator plans were first drawn up a decade ago and given the go-ahead three years ago. Cllr Pite and Cllr Brett add: "Whatever claims are made regarding the reduction in carbon dioxide emissions via offsetting and otherwise, in a declared climate emergency all CO2 emissions must be brought under rigorous scrutiny.

"The people of Edmonton deserve better."

NLWA has previously argued that delaying the project would itself hamper efforts to address the climate emergency, highlighting the new incinerator's ability to generate electricity for 127,000 homes. It has already ruled out alternative plans to build a 'mechanical biological treatment' (MBT) plant, which the authority describes as "unproven, unreliable, and beset with high-profile and costly failures across the UK".

Cllr Loakes said: "We call on Extinction Rebellion to work with NLWA and the boroughs in areas of common interest, such as the vital practical and campaigning work to reduce waste and increase recycling for the benefit of the planet and future generations.

"Supporting and encouraging our residents is an area where we could be working together to focus minds and secure much needed behaviour change."



Sevdalin Atanasov pleaded guilty to rape

## Rapist jailed

**A** man who raped a woman at knifepoint in her Enfield home has been jailed for 13 years.

Sevdalin Atanasov, aged 32, of Exeter Road in Brimsdown, was sentenced last month at Wood Green Crown Court. He had previously pleaded guilty to rape. A further count of making threats to kill will lie on file.

The crime took place in the early hours of 22nd October 2019 when the female victim, aged in her 30s, awoke to find Atanasov in her bedroom with his hand over her mouth. Holding a knife to her throat, he raped her, while threatening to kill her throughout the attack. The victim managed to flee to a friend's address where police were called.

Atanasov was known to one of the victim's flatmates who had agreed that he could spend the night at the address. When questioned by police he initially denied the offence, but entered a guilty plea after being presented with forensic evidence of the assault.

Detective Constable Andrew Poore, the investigating officer, said: "The effects of Atanasov's attack, in what should have been the safety of her bedroom, will undoubtedly remain with the victim forever. He took advantage of knowing that she was asleep, alone and vulnerable in her bedroom.

"I hope that knowing he has been jailed brings her a measure of comfort and security and allows her to move forward with her life. I commend the bravery, resolve, and support shown by the victim in this life-changing ordeal."



The new Edmonton incinerator would be able to burn 700,000 tonnes of waste every year



## Postboxes of Enfield

*David Chandler explains the origins of the humble postbox, and why some are more significant than others*



Edward VII postbox in Gordon Hill  
Credit: Jack Gordon

Wherever you live or work in Enfield, pay a visit to your nearest postbox and take a proper look at it. Do you know the history of 'your' postbox? Where it was made? Whether it is rare or unusual?

To help, let's take a whistle-stop tour of the history of the humble postbox. There are more than 115,000 boxes in the UK, including pillar boxes, lamp boxes, wall boxes and many other different types and designs. In fact, there have been more than 800 variations across the years.

The first letter box was introduced in Jersey in 1852. Mainland Britain soon followed, with Carlisle erecting a box in 1853. The first cylindrical pillar box (the design we're most familiar with today) appeared in 1879. Boxes usually carry the cipher of the reigning monarch – a monogram with their initials and title – and our present



This gold postbox in Southbury Road celebrates London 2012 gold medalist Charlotte Dujardin  
Credit: Jack Gordon



The wallbox in Forty Hill is marked VR after Queen Victoria  
Credit: Jack Gordon



A rare postbox marked with the emblem of Edward VIII in Dennis Parade, Southgate  
Credit: Jack Gordon

queen, Elizabeth II, is shown as EIIIR.

So what examples of postal heritage can be seen around Enfield? Unsurprisingly, Elizabeth II boxes are the most common, with lots of pillar boxes, wall boxes and lamp boxes to spot. The previous monarch was George VI and the borough has a number of pillar boxes from his reign. These were produced between 1936 and 1952.

As we go further back, we find a real rarity. Edward VIII abdicated in 1936 after just eleven months on the throne, so very few boxes were produced in that time. There are two surviving examples in Southgate out of a total of 130 in the whole UK, in Bramley Road and Dennis Parade; both of these are really special.

George V was monarch from 1910-1936, a period when Enfield was rapidly expanding, so it's not surprising that there are lots from this period. George V boxes do not show a Roman numeral, just the initials GR.

Boxes for Edward VII (1901-1910) can also be found in Enfield and there is a fine example at the junction of Gordon Hill and Lavender Hill. Post a letter here and imagine all the correspondence it has handled for over a century!

Enfield also has some boxes from the late Victorian period, including a pillar from the 1880s in Park Avenue, near Village Road, and a wall box at Forty Hill, made by WT Allen & Co of London.

There's an even older box not far away, and a rather unusual one too. In Holtwhites Hill, near Drapers Road, you will find an 'anonymous' box. Between 1879 and 1887 boxes did not carry a royal cipher – no-one

**"There are two surviving examples in Southgate out of a total of 130 in the whole UK"**

knows exactly why – so this Victorian box dates from that period. It was made by Handyside of Derby (on many boxes, you will find the maker's name at the base).

Another unusual box is outside Coleman's Parade in Southbury Road. It dates from the reign of George V, but you will notice it has been painted gold. In 2012, Royal Mail honoured each Olympic and Paralympic gold medal winner from 'Team GB' with a gold box in their home town. If you visit the box, you will see it bears a plaque, to commemorate the medal won by Charlotte Dujardin for dressage. Next to the gold box is a modern 'business box' for franked mail pouches and parcels.

Now you have an idea of some of the different types, you can identify your local boxes and see how many variations you can spot around the borough yourself. Happy hunting!

Learn more about UK postboxes via the Letter Box Study Group:  
Visit [lmsg.org](http://lmsg.org)



## AROUND THE BOROUGH

### BOWES PARK

## Appeal to fund boy's cancer treatment



Jago Jones has a rare brain tumour

BY JAMES CRACKNELL

MORE THAN £36,000 HAS been raised in just a few days for a five-year-old boy diagnosed with a rare cancer.

Bowes Park School pupil Jago

wick Road. Gabriele is now trying to raise £450,000 to pay for private treatment in Switzerland, which she hopes will extend his life.

Gabriele said: "Life was perfect for me and my twins until 16th April when Jago was diagnosed. We opted for a clinical trial in Switzerland to help extend his life – but the cost is huge.

"So far the response has been amazing. I'm overwhelmed by people's kindness, generosity and positivity. We live in an amazing neighbourhood and a wonderful friend of mine, Sarah, has been sharing her support, network and social media expertise.

"Even though the response is fantastic, the target is enormous so we need to keep sharing Jago's story far and wide to get the best outcome for my little boy."

**To make a donation to help Jago:**  
Visit [gofundme.com/f/j8gtg-dipg](https://gofundme.com/f/j8gtg-dipg)

Jones has an incurable brain tumour called a 'diffuse intrinsic pontine glioma' (DIPG) – which has less than a 1% survival rate. Most die within eight months.

Jago lives with mum Gabriele and twin sister Imogen in War-

### ENFIELD LOCK

## Anger over tower blackout

BY SIMON ALLIN,  
LOCAL DEMOCRACY REPORTER

PEOPLE LIVING IN A TOWER block were left without power and water in the middle of the coronavirus pandemic in what one resident described as a "nightmare".

The powercut at Woolpack House in Kettering Road is thought to have been caused by a water leak that flooded power cables and damaged a fuse box. It left people in the 13-storey building without power and water overnight on 19th May.

Conservative councillors called for a "full review" of the incident following claims the power cut could have been avoided if the leak had been spotted earlier. Tower resident Mark Bellas said it had been an "absolute nightmare" for

residents, and one woman "had to be carried down from the eleventh floor by an ambulance team" during the incident.

Mark said: "In all honesty, it could have been avoided had they identified the leak a day earlier. The leak was spotted by a caretaker. A contractor came out, and there was no reason at all not to find the leak. There would have been a different outcome had they done it.

"Water was leaking from the flat straight on to main power cables. It was at 7pm the first outage hit. We had four floors that had power, but everywhere lost the water – we were without water for the entire evening, and the lifts were not working."

Mark added the building had been affected by flooding before,

putting the lifts out of action for six weeks. Conservative councillor Lee David-Sanders said: "What happened at Woolpack House was terrible. The whole fuse box has been turned to charcoal.

"There needs to be a full review. It is clear that if council representatives had found the leak the first time they visited, the incident might not have been as bad."

Council leader Nesil Caliskan said: "We are incredibly sympathetic to the residents of Woolpack House for the disruption caused by the recent power outage. Enfield Council acted immediately to address the situation and installed a generator to restore the electricity and water supply to all affected properties within 12 hours – as well as ensuring a passenger lift was fully operational."

### BUSH HILL PARK

## Extra mile

THE OWNER OF A TAXI FIRM has been using his fleet of electric taxi cabs to help the NHS deliver oxygen monitors and medication during the pandemic.

Wellington Road resident Paul Chrisostomou, director of HP Taxi Company Ltd, said his vehicles

became "largely redundant" when the lockdown began in March but agreed to use them to help fight Covid-19 after being approached by his family doctor about it.

Paul told the *Dispatch*: "The oxygen meters we've been delivering can tell someone if they need to go to hospital or not. We've delivered hundreds of them, we were doing about 30 or 40 a day at one point."

### ENFIELD TOWN

## Micro buys Meta

BY SIMON ALLIN,  
LOCAL DEMOCRACY REPORTER

US TECHNOLOGY GIANT Microsoft has agreed to buy Metaswitch Networks, a communications firm based in Church Street.

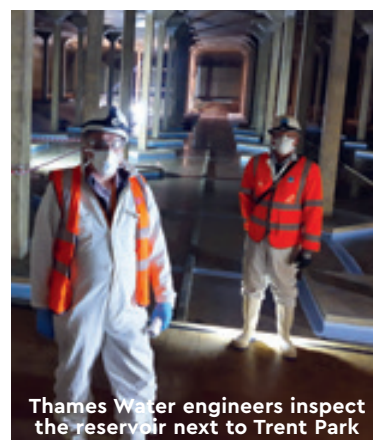
Founded in 1981, Metaswitch provides software to more than 1,000 service providers across the globe. It employs around 350 people and is currently building a new £27million head office on the

former car park in Genotin Road.

Microsoft says the acquisition of Metaswitch will boost its range of offerings for the telecommunications industry as it moves to 5G technology. Metaswitch chief executive Martin Lund said he was "more excited than ever to continue our journey with the added momentum, technology, services, and people that Microsoft can bring".

### COCKFOSTERS

## Reservoir revealed



Thames Water engineers inspect the reservoir next to Trent Park

A HUGE UNDERWATER RESERVOIR next to Trent Park has been drained for inspection by Thames Water, revealing its hidden depths.

Built in 1976, Cockfosters Service Reservoir holds 81 million litres of water – 30 times more than an Olympic swimming pool – and supplies 30,000 properties

in North London. It covers an area bigger than a football pitch and is almost seven metres deep.

Draining and inspecting underground reservoirs is required by law every ten years so engineers can carry out any necessary work to maintain water quality standards. Jon Green, Thames Water's reservoir safety manager, said: "Ensuring drinking water can be stored safely in our service reservoirs is essential for our customers and these inspections and repairs are critical to maintain a safe water supply."

Cockfosters Service Reservoir comprises two 'cells' so, while one is drained for inspections, the other can continue to supply water to homes and businesses. For more information about Thames Water services go to [thameswater.co.uk/help-and-advice/coronavirus](https://thameswater.co.uk/help-and-advice/coronavirus).



# Uncertain future for grassroots sport

## Local sports clubs face both logistical and financial challenges as the lockdown lifts



Councillor Saray Karakus, then the mayor of Enfield, on a visit to Supreme Kickboxing in 2018. The club has not yet been able to resume indoor training.

BY JAMES CRACKNELL

**T**he Premier League returned to action in June, heralding the resumption of elite sport for the first time in three months.

But what does the future hold for local grassroots sports clubs, which don't benefit from huge sponsorship and television deals? Depending on the sport, some clubs have been able to resume training – often with tight restrictions in place to ensure social distancing is maintained. Other clubs remain in limbo, unable to do anything until the government decides to lift restrictions further.

Supreme Kickboxing usually hosts a range of martial arts training sessions at its gym on Leaside Industrial Estate, Brimsdown. Fash Ostowar set up the club nine years ago but now fears for its future. He told the *Dispatch*: “The only training we can do at the moment is in our car park, using mats and social distancing. But we've only had four kids

take part when we usually have 40 or 50.”

Indoor sports face the most difficult barriers to restarting, although restrictions could be lifted by the government this month. Fash says the club still has bills to pay and is now £12,000 in debt after being unable to open the gym for three months.

**“The only training we can do at the moment is in our car park”**

“We are in a really bad situation. Enfield Council has not given us any help, they said we weren't eligible because we don't pay business rates.

“The landlord has been very kind, we are talking to them about delaying payments, but the bottom line is they still

need to make money. Hopefully we can start some sort of [indoor] training in July but it will take us a long time to recover – maybe a couple of years.”

Similarly, Enfield Badminton League has been on hold since March. But unlike clubs with fixed venues, league chair Simon Gouldstone says the fact that the league hires different halls around the borough means they haven't lost any significant amount of money.

Simon said: “Badminton is one of those sports where you rent different halls, and we haven't had to pay to use those venues since March so financially there isn't a big problem.

“Essentially people are finding other sports to play. We might get some news [about restarting] in July. It could be difficult to find a venue as we use a variety of places like sports centres, churches and school halls.

“We don't know what our sports [governing] body will come up with in terms of guidelines – there are a lot of questions we can't answer at the moment.”

Many outdoor sports resumed training in June when the initial lockdown restrictions were lifted. One of the borough's top rugby clubs, Enfield Old Grammarians, started running fitness sessions in June.

Angela Micallef, chair of the club's juniors division, told the *Dispatch*: “We lost a lot of rugby at the start of the year as well because of the weather, so everyone is really keen to get going again.

“We are following the guidelines to ensure everyone is safe. There is no contact, the focus is purely on fitness. We can only have five children per coach, but fortunately we have a large number of coaches. We had about 25 kids last weekend.

“We are planning for a season start in September, as we would do any other year, but we really just hope we can play rugby this side of Christmas.”

Team sports such as rugby and cricket often operate clubhouses which would normally bring in a lot of revenue during the season, but it remains uncertain whether these venues can reopen, even if the sports themselves can resume in some form.

“Not being able to open the clubhouse is our main problem financially – it is a huge source of revenue.”

**For more information about Supreme Kickboxing:**

**Visit** [supremekickboxing.co.uk](http://supremekickboxing.co.uk)

**For more information about Enfield Badminton League:**

**Visit** [enfieldbadminton.co.uk](http://enfieldbadminton.co.uk)

**For more information about Enfield Old Grammarians:**

**Visit** [pitchero.com/clubs/oldgrammarians](http://pitchero.com/clubs/oldgrammarians)

Advertisement

### LICENSING ACT 2003

**Notice of application for the grant of a Premises Licence, under section 17 of the Licensing Act 2003**

Notice is hereby given that **Austrian Food UK Ltd** has applied to the Licensing Authority of London Borough of Enfield for a Premises Licence, licensable activities as follows: online sale of alcoholic products. Using **Austrian Food UK Ltd Registered Office** situated at **42 Madeira Road N13 5SS** to store alcoholic products for delivery to customer homes and for sale at markets.

The public register where applications are available to be viewed by members of the public can be accessed online by visiting <https://new.enfield.gov.uk/services/business-andlicensing/> and following the link to the Licensing Register. Email [licensing@enfield.gov.uk](mailto:licensing@enfield.gov.uk) to request a copy of the application within 28 days from the date of this notice. Any person wishing to submit relevant representations concerning this application **must** give notice by emailing [licensing@enfield.gov.uk](mailto:licensing@enfield.gov.uk), giving in detail the grounds of the representation no later than: **16 July 2020**.

Representations received by post will not be accepted during the Covid-19 emergency period. The Council will not entertain representations where the writer requests that his identity remains anonymous. Copies of all representations will be included in the papers presented to the Licensing Authorities Sub Committee and will therefore pass into the public domain.

Representations must relate to one or more of the four Licensing Objectives: the prevention of crime and disorder, public safety, the prevention of public nuisance and the protection of children from harm. It is an offence, under section 158 of the Licensing Act 2003, to knowingly or recklessly make a false statement in connection with an application for a premises licence. A person guilty of an offence is liable on summary conviction to a fine not exceeding level five on the standard scale

**Dated:** 25 June 2020



# Support independent local journalism

## What we do

Here at *Enfield Dispatch* we do things differently. We combine professional journalism with voluntary contributions from people who live and work in the borough and create content which is responsive to and reflective of the community.

These are challenging times for print media with many newspapers closing and advertising revenue in decline, but our not-for-profit model offers a new approach to creating local journalism which is inclusive and accountable.

## How you can help

As a not-for-profit publication we rely on the generous support of our community. We look to our readers, who recognise the value of independent journalism, to help support us.

You can do this by becoming a member either as an individual or as an organisation. See the rewards opposite and once you've decided what package you would like, visit our website:

[enfelddispatch.co.uk/join](http://enfelddispatch.co.uk/join)

## Individual rewards

### £3 per month upwards:

Name in print and online, pin badge

### £5 per month upwards:

Name in print and online, pin badge, tote bag, paper posted to you every month

## Organisational rewards

### £10 per month:

Name in print and online, 10% discount on advertising

### £20 per month:

Name and logo in print and online, 20% discount on advertising

### £50 per month:

Name and logo in print and online, 40% discount, six free small adverts per year

## Members

Derek Grant, Michael Dickinson, Michael Cole, Young Notes, Ed Balleny, Natasha Boydell, Elizabeth Crosthwait, Richard Stones, Philip Ridley, Suzanne Beard, Chris Kaufman, Martyn Stogden, Susan Cook, Rupert Price, Meryn Cutler, Andrew Irvine, Basil Clarke, John Naughton, Right at Home Enfield, MumSing Choir, Penelope Williams, Lloyd Tew-Cragg, Andrew Warshaw, Anna Crowley, Neil Churchill, Karl Brown, Anthony Fisher, Dan Wright, Residents of Edmonton Green, Kay Heather, Julia Mountain, Excellence in Learning Community, Jerome O'Callaghan, Carole Stanley, Mervyn Maggs, Aditya Chakraborty, Norman Bennett, Vivien Giladi, Greg Andrews, The Old Enfield Charitable Trust, Matt Burn, Enfield URCs, Martin Russo, Marilyn Hamilton, Laura Davenport, Ed Poole, Mick Wood, Helen Osman, Ranvir Mallick, Enfield Over 50s Forum, Francis Sealey, Caroline Banks, Bill Linton, Joe Hickey, Irene Richards, William Yates, Peter Mitterbach, Gianni Sarra, Tracy Hughes, Kristiana Heapy, Neil Bachelor, John Crowther, Hannah Salvidge, Adrian Day, Sean Wilkinson, Janice Nunn, Julia Daniel, Ranjana Pieris, Deborah Dalglish, Vaughan Watson, Philip Foxe, Phil H, Matthew Eade.

## Member organisations



To become an organisational member email:

[klaudia@socialspider.com](mailto:klaudia@socialspider.com)