

# ENFIELD DISPATCH

Nº.33 THE BOROUGH'S FREE COMMUNITY NEWSPAPER

JUNE 2021

## FEATURES

How an Edmonton charity is empowering young people

P. 5

## ARTS & CULTURE

The 'queen of Enfield' launches her debut single

P. 13

## NEWS

Local MP calls for better banking access in Hertford Road

P. 16



After a decade of planning, construction of the first 300 of Meridian Water's 10,000 homes has begun. The first site, Meridian One, is being built by Vistry Partnerships in conjunction with Enfield Council. Pictured with spades are Matthew Taylor, managing director of Vistry Partnerships, and council leader Nesil Caliskan, who said: "This is a huge moment for Meridian Water and a giant leap forward for housing provision in Enfield." Read more on Page 17.

## Town hall leadership survives despite defections and poll defeat

BY JAMES CRACKNELL

Attempts by opposition councillors to oust the ruling Labour administration at Enfield Council were thwarted last month but further party defections – and a by-election loss – have dented its authority.

The first of several setbacks for the local Labour group came in a by-election defeat on 6th May, when the Conservatives gained a councillor in Chase ward. Two other by-elections, although won by Labour, saw large swings away from the party (full report on Page 6).

This was followed by the defection of another Labour councillor – the sixth in a year and eighth in total to either defect or quit the council.

Charith Gunawardena, who represents Southgate, has now become the first-ever Green councillor in Enfield (full report on Page 18).

Then, at an extraordinary council meeting arranged to debate a 'no confidence' motion from the Conservatives, a ninth councillor announced she too was leaving the Labour group (full report on Page 2).

Although Labour ultimately defeated the 'no confidence' motion, in a highly fractious meeting held at Enfield Grammar School, opposition councillors have since lodged complaints over the way the meeting was chaired and have hinted that a fresh attempt to oust the council leadership team may be lodged.

A row over the conduct of Enfield mayor Sabri Ozyaydin, in his role as

chair, erupted after Community First councillor Dino Lemonides was denied his right to speak for three minutes. Cllr Lemonides, an ex-Labour councillor, was attempting to raise the issue of "irregularities" in the Labour group's selection process prior to the 2018 local election – a process investigated by the party's head office, leading to a decision that future selections would be "overseen".

Numerous points of order were raised by Labour councillors, claiming the issues Cllr Lemonides tried to address were "irrelevant", but monitoring officer Jeremy Chambers said he should be given his chance to speak. Instead, he was drowned out by noise, and then told by Cllr Ozyaydin that his time

had elapsed. A video recording of the meeting shows Cllr Lemonides spoke for 51 seconds.

Cllr Ozyaydin was re-elected for a second term as mayor the day before the extraordinary meeting, after Cllr Caliskan said he had been "unable to fulfil the role in the way that he had envisaged" during his first year, because of the pandemic. Some Conservative councillors called on the mayor to resign, while both opposition group leaders lodged formal complaints over his conduct, claiming the mayor's rulings during the meeting favoured Labour.

The council, as well as the mayor's office, were contacted for comment.

▶ CONTINUED ON PAGE 2



[enfielddispatch.co.uk](http://enfielddispatch.co.uk)

[enfielddispatch@socialspider.com](mailto:enfielddispatch@socialspider.com)

[@EnfieldDispatch](https://twitter.com/EnfieldDispatch)

[@EnfieldDispatch](https://www.instagram.com/EnfieldDispatch)

[/EnfieldDispatch](https://www.facebook.com/EnfieldDispatch)



The Dispatch is supported by Chamberlains Estates – turn to page 3



ED.

Nº.33  
JUNE 2021

Enfield Dispatch is the borough's free community newspaper. We publish monthly and distribute 10,000 free copies of each issue – and we will continue to do so during the ongoing public health crisis.

**Publisher**  
David Floyd

**Editor**  
James Cracknell

**Designer**  
Jonathan Duncan

**Head of Advertising**  
Klaudia Kiss

**Head of Operations**  
Paige Ballmi

**Engagement Manager**  
Penny Dampier

**Contributors**  
Olivia Devereux-Evans,  
Laura Spencer, Leonie  
Eisenberg, Kate Reader,  
Vickie Pite, Chinelo Anyanwu,  
Elaine Graham-Leigh, Zoe  
White, Janice Downing,  
Andrew Warshaw

## CONTACT

Call 020 8521 7956  
Email [EnfieldDispatch@socialspider.com](mailto:EnfieldDispatch@socialspider.com)

## ADVERTISING

Call 07732 000 430  
Email [klaudia@socialspider.com](mailto:klaudia@socialspider.com)  
For licensing enquiries:  
Email [xavier@socialspider.com](mailto:xavier@socialspider.com)



Enfield Dispatch is a member of IMPRESS: The Independent Monitor of The Press. For more information on the Dispatch's complaints policy and how to make a complaint visit: [enfielddispatch.co.uk/complaints](http://enfielddispatch.co.uk/complaints)

# Ninth councillor to leave Labour group explains why

BY JAMES CRACKNELL

**A**n ex-Labour councillor who dramatically quit the party in front of her colleagues has explained her reasons for doing so. Ponders End ward councillor Ayfer Orhan stood up at the start of last month's extraordinary council meeting to announce she had resigned from Labour after four decades in the party, but did not get a chance to explain why, amid numerous heated exchanges throughout the night.

Cllr Orhan, a councillor for 19 years, later explained in a press statement that her decision came after a two-year internal investigation into a social media post had exonerated her, but left her feeling "harassed" by the Labour group's leadership in Enfield.

In March 2019, Cllr Orhan shared a tweet, originally posted by someone else, that claimed Israel had supported terrorist groups in a bid to secure control of a disputed territory. Following the tweet, council leader Nesil Caliskan issued a statement claiming the tweet was anti-semitic and saying Cllr Orhan was suspended.

Two years later, Cllr Orhan took Labour to court alleging the party's long delays to resolving



Ayfer Orhan has been an Enfield councillor since 2002

disciplinary cases was unlawful. Before the case could reach court, however, she was told by Labour head office that her conduct had not breached party rules. She said: "In response to a benign tweet I posted in 2019, right-wing Labour councillors attempted to push me out of Enfield politics. Cllr Caliskan issued a public statement containing a number of falsehoods, which have still not been corrected.

"Those events triggered a needless investigation against me by the Labour Party, which I believe was a grotesque intimidatory exercise. The attacks on me by Labour councillors have led to me receiving an avalanche of abuse, both online and offline.

I've been living with terrible stress and fears for my safety."

Cllr Orhan, a backer of Jeremy Corbyn, also cited the leadership of Keir Starmer as a reason for her decision to quit. She will now be joining six of her former Labour colleagues in the opposition group, Community First. Dinah Barry, group leader, said: "Her determination to achieve justice after the outrageous way she was traduced and bullied speaks of her integrity and shows why she has been such a fine councillor."

Cllr Orhan added: "There is a culture of bullying and harassment within the Labour group. That's partly why so many have felt compelled to resign."

Cllr Caliskan said: "Cllr Orhan's tweets caused distress to Jewish residents who contacted me with their concerns. It is usual for suspensions to be in place during investigations.

"While myself and other Labour councillors are focusing on the residents of Enfield, Cllr Orhan has kept her focus on internal politics and resorted to innuendo and unfounded accusations. She has been repeating these accusations since 2018, when herself and other councillors failed to accept changes that came through legitimate democratic processes."

## ▶ CONTINUED FROM PAGE 1

Cllr Lemonides told the *Dispatch*: "It is obvious to me they don't want to debate this issue. If there is nothing untoward to this [the 2018 selection process] then why won't they talk about it? They know I am getting at the truth."

Another controversy from the meeting was the time given to other motions on the agenda. The 'no confidence' motion was listed for debate first, but a Labour procedural motion led to it being bumped down and debated last. Mike Rye, the former Conservative council leader, said: "It is a disgraceful display and any reasonable member of the public would expect the motion of 'no confidence' to be taken first on the agenda."

Monitoring officer Jeremy Chambers described Labour's procedural motion as "appropriate" and "in accordance with the constitution".

Other motions debated first

included one on a pay rise for NHS staff and another calling for more protection from violence for women and girls. Both were passed. A third motion, calling for the reopening of Whitewebbs Park Golf Course, was rejected. Once these were concluded, the meeting had been running for two-and-a-half hours, with 45 minutes remaining to debate the 'no confidence' motion.

The Conservatives had twice attempted to end the discussion on NHS pay. At this point Cllr Caliskan accused opposition councillors of "trying to filibuster" to avoid discussing the government's proposed 1% pay offer for health workers. Tory group leader Joanne Laban responded: "The only group trying to filibuster is the party opposite."

Cllr Laban later explained why the Conservatives tabled the 'no confidence' motion, claiming the Labour administration "does not

listen" to local people on issues such as bin collections, fly-tipping, low-traffic neighbourhoods, and Whitewebbs Park Golf Course.

In response, several Labour councillors spoke up in defence of Cllr Caliskan and her leadership, highlighting that many decisions were made to save some of the money lost following the Conservative government's cumulative cuts to the council of £95million since 2010. Alev Cazimoglu, cabinet member for health and social care, described the 'no confidence' motion as a "political gimmick" and added: "Enfield residents know the Tories have nothing to offer them."

Data released in the aftermath of the City Hall election shows Enfield was the only London borough that backed Sadiq Khan in 2016 to have switched to voting for the Tory mayoral candidate in 2021 – suggesting the Conservatives could win control of Enfield Council in 2022.

## Burglar jailed

**A** teenage burglar who threatened elderly residents in their homes with a screwdriver has been jailed for eight years.

Eighteen-year-old Michael Maughan, of Great Cambridge Road in Enfield, was sentenced at Wood Green Crown Court last month after being convicted in March of two counts of aggravated burglary, one count of aggravated vehicle theft, and one count of possession of an offensive weapon.

The two burglaries took place on 28th February 2020 in Hermitage Road, Tottenham, and in Wilbury Way, Edmonton. Maughan's accomplices during the violent break-ins have yet to be traced.

Detective Constable John McGranahan, who is leading the investigation, said: "Maughan, and his accomplices, terrified their elderly victims in their own homes, a place they should have felt safe.

"Despite Maughan's conviction, our investigation is not over. We are still making enquiries to establish who else was involved. I would urge anyone who has information that could assist to please come forward."

Anyone with information is asked to contact police via 101, quoting reference Cad 2823/28Feb20. Alternatively, call Crimestoppers anonymously on 0800 555 111.

## Lightning strikes

**I**nvestigators from London Fire Brigade have concluded that a house fire in Cockfosters was started by a lightning strike.

Although no-one was hurt by the blaze on 16th May, the roof of the semi-detached house in Westpole Avenue was destroyed and a small part of the roof of an adjoining house was also damaged.

The brigade's fire investigators have since concluded that the fire was accidental and caused by a lightning strike. Station commander Paul Eastland, who was at the scene, said: "Crews arrived to find a fully developed fire in the roof of a house, which had also spread to a small area of an adjoining property.

"Crews worked incredibly hard using one of our turntable ladders to remove tiles from the roof of the building and access the fire to bring it under control.

"Fires caused by lightning are uncommon but unfortunately can cause quite extensive damage."



# CHAMBERLAINS

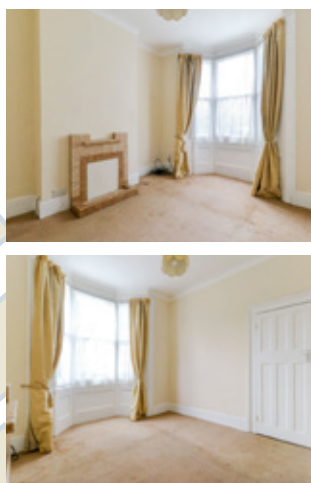
## E S T A T E S

Free professional video tours for all new Sales & Lettings instructions



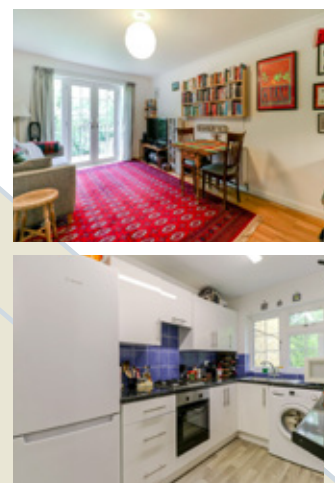
SOLE AGENTS

A CHAIN FREE TWO BEDROOM VICTORIAN COTTAGE WITH UPSTAIRS BATHROOM – EPC D Chase Road, London N14 4JP £535,000 Leasehold



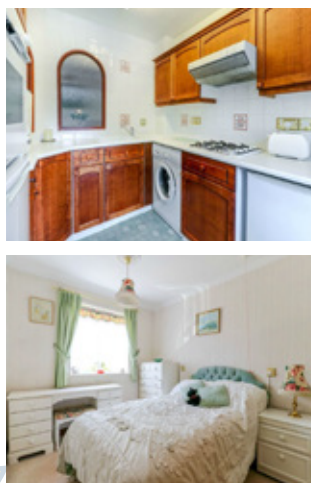
SOLE AGENTS

A WELL PRESENTED ONE BEDROOM FIRST FLOOR APARTMENT – EPC D Crofton Way, Enfield EN2 8HS £285,000 Leasehold



SOLE AGENTS

TWO BEDROOM FIRST FLOOR RETIREMENT FLAT – EPC C Cavell Drive, Enfield EN2 7PR £279,950 Leasehold



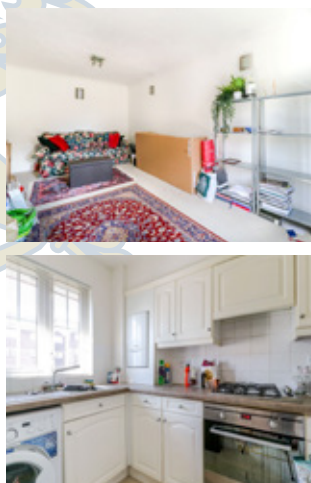
SOLE AGENTS

STYLISH GROUND FLOOR STUDIO APARTMENT – EPC BAND C Tempsford Close, Enfield EN2 7EP £207,500 Leasehold



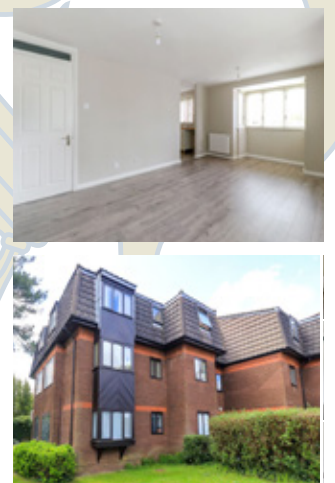
SOLE AGENTS

WELL APPOINTED TWO BEDROOM APARTMENT – EPC C Vermont Close, Enfield EN2 7BF £1,350 per month



SOLE AGENTS

A SPACIOUS TWO BEDROOM, TWO BATHROOM UNFURNISHED APARTMENT – EPC D Woodridge Close, Enfield EN2 8HJ £1,300 per month



47 Windmill Hill, Enfield, Middlesex, EN2 7AE Tel: 020 8366 3551  
chamberlainsestates.com mail@chamberlainsestates.com





## How we support vulnerable residents

Laura Spencer from Enfield Connections speaks to one of the charity's advisers



Enfield Connections adviser Izabella Sowe

supports the community, I spoke to Izabella Sowe, an Enfield Connections adviser, to find out more about her day-to-day responsibilities.

Izabella joined Enfield Connections in September 2020 and, prior to this, was employed by Citizens Advice Enfield for ten years as a specialist adviser. "As an adviser, it's really important to listen," Izabella explains.

"I allow clients to explain their concerns or problems that they face, then ask questions to assess what advice or information is required. It may be that they just need to be pointed in the right direction, but where the issue is more complex, I can offer an appointment to provide hands-on assistance."

Izabella works very closely with Enfield Council and Citizens Advice Enfield, which delivers a fast-track disability service, allowing her to book clients directly into their online calendar. Age UK Enfield also provides later-life planning to any clients who might require guidance.

Explaining further how residents may use the service, Izabella says: "The main issues we tend to deal with are difficulties

around forms which need to be completed online, benefit checks and advice, rent arrears, housing benefit and council tax issues, as well as enquiries relating to accommodation and housing options."

**"I allow clients to explain their concerns, then ask questions to assess what advice or information is required"**

When asked about the most rewarding aspect of her job, Izabella said: "It's knowing that I have hopefully made a positive change in someone's life – helped them to overcome an obstacle, a problem, provided them with the information they need to help themselves, or just the fact that I was there to listen."

If you are in need of assistance, contact Enfield Connections (phone lines are open Monday-Friday, 10am-3pm):

Call 020 3960 0129

Email [info@enfieldconnections.org](mailto:info@enfieldconnections.org)

## Spotlight on veterans

Kate Reader from Age UK Enfield is leading a new project focusing on helping veterans

Last year I worked on a project that helped to identify local people who had served in the armed forces or in national service.

In six months, I identified and worked with 82 people who had either served or were family members of someone who had served in armed forces.

The aim of the project was to help participants obtain welfare benefits or any financial assistance they might be entitled to and, in some cases, to be awarded a medal for which they didn't know they were eligible. One person we helped was Bill Plume, aged 94, who served in the army between 1944 and 1947, in Palestine and Germany, and said he was "delighted" to be awarded his medal and retell his stories of active service.

One of the most notable findings from the project was the need and desire of participants to connect with others; this encouraged us to apply for further funding, and we were delighted to be awarded funding from the Armed

Forces Covenant Fund in a new two-year project.

This is a really exciting project to be involved with. Loneliness and social isolation are an issue for many veterans living in Enfield, more so with the pandemic, and this project is a wonderful opportunity to begin to address this issue and offer support.

The project will give veterans and their families the opportunity to meet other people in a friendly, social environment, take part in physical activity if they wish, and link with Age UK Enfield and other local services.

We can support anyone who has completed at least one day of military service, including national service, and are hoping to offer our support to many people over 50 in Enfield borough. Close family members of veterans are also eligible.

For more information:

Call 020 8375 4120

Email [kate.reader@ageukenfield.org.uk](mailto:kate.reader@ageukenfield.org.uk)

Visit [ageukenfield.org.uk](http://ageukenfield.org.uk)



Bill Plume with his veterans badge, after being supported by Age UK Enfield

## Exchange of views

Leonie Eisenberg from Generation Exchange on how to bridge the divide between generations

Generation Exchange is an intergenerational charity and our aim is to provide fulfilling educational opportunities to children, young people, and the older generation.

The charity was set up in 2016 in Haringey and has supported and trained more than 50 older volunteers to help children with reading, maths, and life skills in primary and secondary schools.

We have also developed a digital inclusion programme, 'IT Exchange', whereby teenage volunteers from schools in Enfield and Haringey work one-to-one with older people to help them improve their digital skills.

Over the past four years we have recruited 150 young volunteers to support local older people. With the pandemic, our face-face work was suspended, but we responded to the crisis by creating a virtual edition of our IT Exchange programme, which launched in January.

In nine weekly supervised sessions held online we recruited, trained and supported 36 volunteers aged 16-17 from St Anne's Upper School in Palmers Green and the London Academy of Excellence in Tottenham to provide digital support to older people. Their role has been to plan and deliver presentations to 30 older people aged 60-plus on a variety of IT topics, including how to set up a Zoom account, installing apps, and online shopping.

I've been so impressed with the dedication and willingness to collaborate from the schools and volunteers involved. Their support is of direct benefit to so many local older people, where digital skills have become even more essential as a result of the pandemic.

We have also partnered with another charity to deliver an online safety session and we held a virtual quiz. One of the older learners said: "Thanks to the volunteers, I was able to install the Zoom app to host a meeting, and I actually had a Zoom meeting with my family."

"They too were so excited that they asked me to host another one."

Maria-Cristina Geraci, from St Anne's Upper School, works closely with us to support the project. She said: "It is a fantastic project for our young people and it is a pleasure to see the benefits and support they are offering to older people in the local community."

"Each week our older learners have been logging in to learn something new and spend time with their student teachers. The experience has been fantastic to watch."

"Throughout the sessions stories of many different kinds are always exchanged, creating such a nice virtual atmosphere."

For more information about IT Exchange contact Leonie:

Call 07713 937 811

Visit [generationexchange.org.uk](http://generationexchange.org.uk)



## Connecting young people

Olivia Devereux-Evans speaks to some of the people behind an Edmonton youth charity



Free workshops run by NYCC help local youths learn new creative skills

other creative media projects to be undertaken. New projects are also in the works, including fitness workshops on Zoom and an animation masterclass, while they also publish a blog with information on issues such as teen mental health.

In order to do all of this, NYCC is fundraising. Chris added: “We work in Enfield, Haringey and Barnet but we have kids from across London using our services.

“We work with people from different ethnic groups, we work with anyone. It is about inspiring and making change.”

**“We work with young people to empower them to take a lead”**

Project Code is open to any local teen who needs support or guidance. NYCC co-marketing manager Íris Santos said: “It makes a change in them and the community around them. They are making something for themselves and for the community.”

For more information about NYCC and Project Code:  
Instagram @nycc\_london  
Visit northsideyouth.co.uk

**A**n Edmonton charity tackling gang violence through free workshops and educational support is inspiring a new generation of teens.

Northside Youths and Community Connections (NYCC) was established in 2008 after a surge in gang violence in the area. The not-for-profit youth-led organisation discourages teens from joining gangs and also helps them to leave gangs.

One of the staff members at NYCC, Cynthia, explained: “My kids grew up in the area and luckily for me they have not really been involved in that side. [But] so many of the kids are involved in it.

“It is about trying to bring them back and show them that there is something better out there. You do not have to go out there and be in a gang. You do not have to be on the street corner. You have got role models out there that you can look up to.”

Alongside gang prevention work, the charity, based in Edmonton Green Shopping Centre, runs an outreach programme, job and activity workshops and offers parental support. The organisation relies on volunteers, with demand increasing for services because of the lockdown. NYCC has remained open throughout the last year, offering support and activities for young people in the centre.

Volunteers also began a new project called Project Code, offering online activities for teens while they have been at home. NYCC founder Chris McCoy said: “There has been increased demand. Our main message is that young people can do anything they put their mind to.

“A lot of the time they get told they cannot do something. We work with young people to empower them to take a lead on activities. They co-run activities on the programme.”

Staff have also drawn up plans for a new media centre to be built in an empty building within the shopping centre. They aim to create a space allowing videos and



Advertisement



Are you close to retirement? Then you have one more big decision to make - how to draw down your pension and get it working best for the lifestyle you want.

There are a few options to consider, do I take out a lump sum? Invest some of it? Or get an income for life?

At Archers, we have over 25 years of expertise to help you find a plan that best suits your needs.

So, no matter who your pension is with, contact us about your retirement planning with Archers - it's a smart way to make the most of what you have and fully embrace your retirement.

For more information on any other matter contact Archers on:  
**020 8364 5445 / 020 8364 6099**  
or email: [info@archersonline.co.uk](mailto:info@archersonline.co.uk)

**Archers**  
Financial Services Ltd

Archers Financial Services Ltd, 1 Windmill Hill, Enfield, Middlesex EN2 6SE  
Tel: 020 8364 5445 / 020 8364 6099 • Email: [info@archersonline.co.uk](mailto:info@archersonline.co.uk) • [www.archersonline.co.uk](http://www.archersonline.co.uk)

Archers Financial Services Ltd is directly authorised and regulated by the Financial Conduct Authority (FCA: 650075). Your home may be repossessed if you do not keep up repayments on a mortgage or any other debt secured on it. Investments can be made into a selection of funds which invest in different asset classes such as cash, gilts, property and stocks & shares. These funds carry differing levels of risk. The value of the funds can fluctuate and may fall as well as rise. The Financial Conduct Authority does not regulate taxation and tax advice.



# Conservatives gain council seat from Labour in by-election victory

## Labour vote share down across all three wards contested in May's council by-elections



Andrew Thorp, the new Conservative councillor for Chase ward

The Conservatives have gained a seat on Enfield Council after the party won one of the three by-elections in a previously Labour-held ward.

Andrew Thorp won convincingly in Chase, overturning a 60-vote margin of defeat for the Tories in the 2018 election to come through and win by a 7.5% margin over Labour this time around.

The ward was one of two – together with Jubilee – where a vacancy had arisen because of the resignations of Labour councillors, while a third by-election was held in Southbury following the death of long-time Labour member Chris Bond last year.

In both Southbury and Jubilee, new Labour councillors were elected, but the party's share of the vote was down significantly on its 2018 share. Overall across the three wards, Labour's vote fell by 13.6%.

Cllr Thorp, talking to the *Dispatch* shortly after his victory in Chase ward, said: "It was a closely-fought election campaign and I owe a lot to my wonderful team in Enfield Conservatives. It has been a massive team effort."

"Our main campaign points were about protecting Whitewebbs Park Golf Course, which Labour recently closed, and also cleaning up Chase ward and tackling fly-tipping."

The controversy over Whitewebbs Park was expected to be a big factor for Chase ward voters, but the swing from Labour to Conservative in Chase was actually less than it was in Southbury

and Jubilee wards, suggesting there were other reasons behind the move away from Labour for Enfield voters.

Cllr Thorp added: "I think it reflects that people in Enfield want to be listened to and want the council to act on what they say."

"We have only got a year until the next election so I have got a year to prove myself to the voters. I am a local chap and for me it's all about making Enfield a better place to live."

Reacting to the three by-election results, council leader Nesil Caliskan said: "It is disappointing when we don't win a seat. We fought for every vote. But, in reality, against a pretty stark swing against Labour nationally, I am really proud of our honest campaign in Enfield from three exceptionally brilliant female candidates."

Cllr Caliskan said that in marginal seats such as Chase, the national swing against Labour coupled with more people voting for minority opposition parties had "let the Tories in through the back door".

Conservative leader Joanne Laban had a different interpretation of the result and said: "The people of Chase ward have spoken. They are unhappy with the Labour administration and they want to be listened to, especially over Whitewebbs and the state of our environment. I am ecstatically happy with the win in Chase."

In Southbury, despite the party's vote share falling by 18.9%, Labour candidate Ayten Guzel still ran out a comfortable winner



Ayten Guzel, the new Labour councillor for Southbury ward



Chinelo Anyanwu, the new Labour councillor for Jubilee ward

ahead of Tory Patrick Drysdale. She said in her victory speech: "I am delighted and honoured to have been elected as the new councillor for Southbury ward. Thank you to the many Labour activists who campaigned and most importantly thank you Southbury residents who voted for me."

In Jubilee ward, Labour were again victorious, with their candidate Chinelo Anyanwu cruising to victory over Conservative candidate Benny Neza. Speaking after the result was announced, Cllr Anyanwu said: "I grew up in the ward, and I am back now to give to the community that has given me so much. It is going to be a wonderful time."

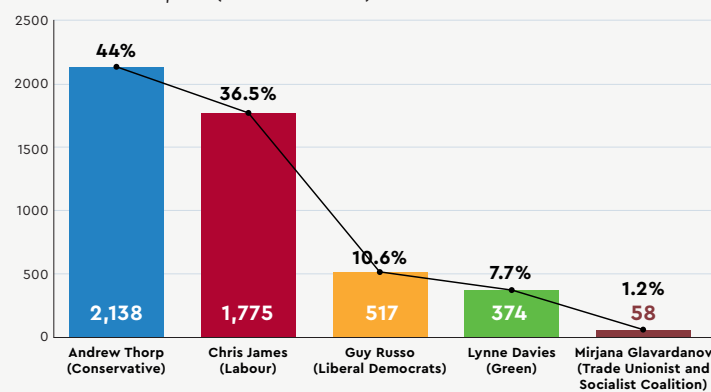
In the London Assembly vote for the Enfield and Haringey constituency, Joanne McCartney was returned to City Hall with a vote share of 48.3%, down by 5.7% from her previous win in 2016. Conservative Lee David-Sanders, a Highlands ward councillor, came in second with 25.8% of the vote share, while the Green Party's candidate Jarelle Francis was third with 13%.

Joanne, in her victory speech, said: "I want to thank the voters of Enfield and Haringey for putting their trust in me again and I will work hard for you every day."

"Labour campaigned to make our city better, to make it greener, fairer and safer, and we meant it. The government talks about levelling up but that seems to be code for an anti-London agenda – London needs levelling up as well."

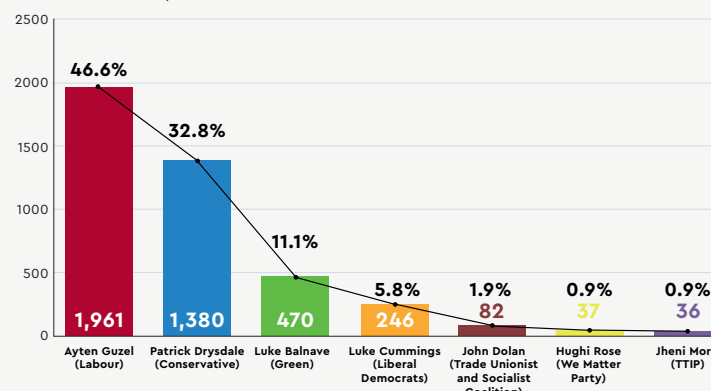
Chase by-election (Enfield Council)

Total votes = 4,862 (turnout 48.7%)



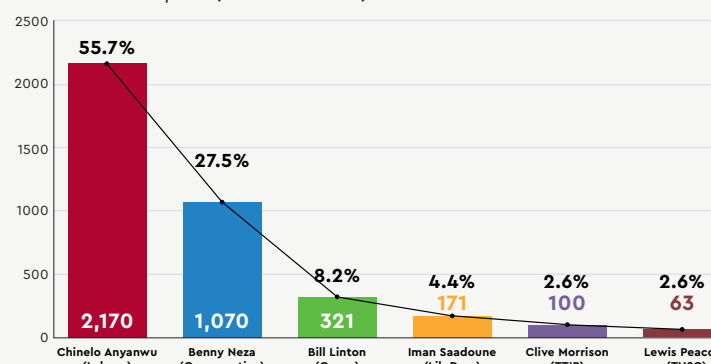
Southbury by-election (Enfield Council)

Total votes = 4,212 (turnout 41.8%)



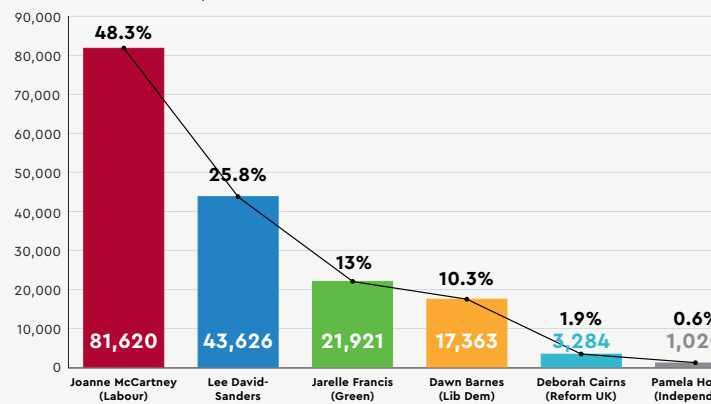
Jubilee by-election (Enfield Council)

Total votes = 3,895 (turnout 41.2%)



Enfield and Haringey (London Assembly)

Total votes = 168,834 (turnout 42%)







# ENFIELD COMMUNITY HEROES

Sponsored by Edmonton Green Shopping Centre

## The civic organiser who gets local voices heard

### Jane Maggs helped Southgate residents share their views on a contentious planning application

**T**rying to understand the processes of local democracy and how you can get your voice heard on local issues can be a bewildering experience.

That's why every community needs someone like Jane Maggs, who knows what rights local people have, how they can have their say, and can facilitate discussions between residents and the organisations making decisions that will affect their lives.

Two years ago it was revealed that a 17-storey redevelopment was being proposed in Southgate that would substantially alter the look and feel of the town centre, a designated conservation area. Jane, as vice-chair of Southgate District Civic Voice (SDCV), led a campaign to ensure the views of local people were listened to.



Jane Maggs is the vice-chair of Southgate District Civic Voice

She helped organise a community planning weekend in a local church to encourage the wider community to come together to discuss and respond to the application. Jane then contacted Civic

Voice, a national charity representing the civic movement, to seek their help in facilitating a series of workshops to give local people a better understanding of the issues at hand – more than 250 people subsequently attended.

A year later, after 451 local people objected to the scheme and just 22 supported it, councillors on Enfield Council's planning committee rejected the developer's plans.

Jane said: "People were concerned about what was happening but didn't know where to go. I wanted to use that energy in a positive way, to give people a voice.

"We know that places change, it is not about stopping that, but it is about making sure that the change is appropriate.

"We want to improve where we live

and ensure planning applications are to a high standard."

Jane's efforts in raising awareness of the Southgate Office Village proposal were recently recognised by *The Planner* magazine, which named her as one of its 'women of influence'.

Jane's next mission is putting together a submission on behalf of Southgate residents for the upcoming appeal hearing against the council's decision, which has been lodged by the developer and will be heard later this year.

#### Nominate your heroes

Dispatch readers are welcome to nominate their own 'Enfield Community Hero' – someone who you think has gone above and beyond to help support the local community. Simply email your nomination to [EnfieldDispatch@socialspider.com](mailto:EnfieldDispatch@socialspider.com)

Advertisement

## APPLE-Tree Study: Preventing dementia in people with memory problems



Economic  
and Social  
Research Council

SUPPORTED BY



National Institute  
for Health Research

### Would you be interested in helping us?

We are looking for people with mild memory problems to try out our new wellbeing course!

### What will happen if I take part?

- The course involves 10 fun, interactive video- call group sessions over 6 months, aimed at helping people change their diet, activity levels, and wellbeing in ways that can improve memory.
- Half of participants are offered the wellbeing course; and all participants complete questionnaires with a researcher over the phone or video- call, and then again one and two years later. This is so we can compare people who do and don't receive the sessions to see if the wellbeing course helps memory.
- We will offer you £60 in vouchers to thank you for taking part.

### If you are interested in hearing more, please contact:

Janine Brierley or Noa Solomon

Email: [dop.apple-tree@ucl.ac.uk](mailto:dop.apple-tree@ucl.ac.uk)

Phone: 07823 685922/07823 685824



**APPLE-Tree**  
Cognitive Wellbeing in People with Memory Problems



Part of Enfield's extensive Green Belt, as seen from The Ridgeway

# Our hopes and fears for the Green Belt

Vicki Pite from Enfield Climate Action Forum on how the group is working on new ideas for the future of the borough's Green Belt

**T**he topic for a community event hosted by Enfield Climate Action Forum (EnCaf) in April was "Enfield's land, now and in the future".

The programme brought together speakers from different backgrounds, each with a compelling story about the lifeline for Enfield that is the Green Belt. We learned about our hundreds of hectares of farmland (equivalent to 2,000 football pitches) and how it has been, is, and might be used in the future.

Malcolm Goodwin, the principal of Capel Manor College in Bulls Cross, reminded us that climate change is an environmental emergency. Turbulent weather disrupts wildlife and food supplies, creating uncertainty. Capel Manor graduates are taught to understand nature, how it works and its vulnerabilities, but they also learn the practical skills to "look after the natural world" – because it's their future.

They learn laboratory skills, the importance of soils, animal husbandry, arboriculture, using drones to map the land for instance, but are expected to be passionate about their studies; stewardship of the land is a long-term commitment. Nature doesn't respond overnight.

Farmers Elaine and Robert Hayward perfectly illustrated Malcolm Goodwin's point. With a history of farming

cereal, eggs, poultry, dairy, suckling herds, venison and livery stables, the Haywards have recently introduced woodland, reed beds and five kilometres of hedging with substantial gains in biodiversity; a far cry from land of "poor ecological value" according to a recent Enfield Council correspondence with the Friends of Parks group.

The Haywards envisage reinstating a four-hectare lake with a beaver family (*You better bel-eaver it!*, Issue 32, Page 1), iron age pigs, flower-rich meadows, willows, and nature ponds. An orchard, involving young people and the community, is another planned

Enfield. Matt highlighted a piece of Green Belt land near Meridian Water in Edmonton, which was recently identified as one of ten potential new parks for London by the Campaign to Protect Rural England. We were surprised to learn that this area, plus 28 other Green Belt sites including farms and garden centres, had been earmarked as "potentially developable" by Enfield Council in its recent Strategic Housing Land Availability Assessment (SHLAA) document. This is despite there being enough brown-field land to build the affordable homes so desperately needed.

Carol Fisk explained that the council had commissioned a review of Enfield's Green Belt, much of which is owned or optioned by developers eyeing up profitable executive housing.

EnCaf's response to *Enfield's Blue Green Strategy*, another new council report looking at parks and open spaces, made several recommendations about the social, economic and environmental opportunities afforded by Enfield's rich farming heritage. While heartened that its recommendations on rewilding, tiny forests, climate adaptation and managed sustainable farming got a nod in the council's adopted strategy, EnCaf members remain fearful for the opportunity lost and the council's intent beyond its green rhetoric.

*Vicki Pite is a former Labour Party councillor.*

***"The Haywards envisage reinstating a four-hectare lake with a beaver family"***

project supported by Natural England that will provide local food and support local foodbanks.

These presentations and videos about rewilding and food production enabled us to imagine how much of a vital resource the borough's land is, and how it might be used sustainably to help secure Enfield's future as an environmentally-progressive London borough.

However, as well as the positive visions presented, Matt Burn (Better Homes Enfield) and Carol Fisk (Enfield Roadwatch) discussed their concerns about the future of the Green Belt in

## Getting to work in Jubilee

*Following her victory in last month's by-election, new Jubilee ward councillor Chinelo Anyanwu introduces herself*

**I** have very gratefully been given the opportunity to serve the residents of Enfield.

I was born and brought up in Edmonton and have great memories, from my first job at Giftland in Fore Street to attending many funfairs at Jubilee Park with my school friends.

I look forward to being a very active local councillor, facing issues head on, working together with my ward colleagues Alev Cazimoglu and Nesil Caliskan to serve the residents in Jubilee ward.

A top priority for me is to support the efforts of the council in keeping our streets clean. It is unacceptable that some inconsiderate residents and businesses dump rubbish on our street corners and alleyways. I will be working to help tackle this issue – I encourage residents that witness fly-tipping to please report it and support the council in taking enforcement action whenever it can.

I also know that community safety is really important to residents. As a mother of two, I understand the challenges parents face bringing up children in a safe environment and ensuring they have access to a variety of positive activities.



**Chinelo Anyanwu was elected to represent Jubilee ward following a by-election on 6th May**

The children of our community are the future and I plan to work with schools in the ward to inspire, champion and celebrate young people. That's why I support the council's 'Summer University' programme so that, in July and August, thousands of places will be offered on free courses for young people aged from eleven to 19 years.

I am concerned that the Conservative government's funding cuts since 2010 mean that Enfield borough has lost 241 police officers and police community support officers. I will continue to campaign for more neighbourhood police officers and I welcome Enfield Council investing in more than 300 CCTV cameras.

I have met many Jubilee residents over the past few weeks and look forward to meeting many more, alongside the community groups and friends of the park. In the meantime, if you are a Jubilee resident that needs help with any casework, please do not hesitate to contact me.

**Chinelo Anyanwu represents Jubilee ward alongside Alev Cazimoglu and Nesil Caliskan (all Labour). Ward surgeries are currently taking place online.**

**Call** 020 8379 5516

**Email** [cllr.chinelo.anyanwu@enfield.gov.uk](mailto:cllr.chinelo.anyanwu@enfield.gov.uk)



Advertisement



**NIDUS**  
Centre of Excellence for Independence at Home

## Supporting independence at home for people with dementia

### Would you be interested in helping us?

We would like to invite family or friends who support someone living with dementia to try out a new intervention (NIDUS-family) to help people living with dementia stay independent and remain at home.

### What will happen if I take part?

- You will have the opportunity to discuss the study and ask questions.
- You will be asked to complete questionnaires with a researcher at the start of the study and then 6 & 12 months after the initial call.
- If you are offered NIDUS-family, a researcher will explore what is important to you and the person you support, help develop strategies with you and signpost you to services. This might include support with getting out and about, staying healthy and safe, improving sleep, help at home and making future plans.
- We will offer you £60 in vouchers to thank you for taking part.

### If you are interested in hearing more please contact...

Jessica Budgett, UCL (University College London)

Email: [dop.nidus@ucl.ac.uk](mailto:dop.nidus@ucl.ac.uk)

Tel no: 07899 858 684



Funded by  
Alzheimer's  
Society

Research partners:



# LETTERS

## Send us your letters

Got an opinion on something in Enfield? We accept letters of up to 150 words from people and organisations in the borough. Email [EnfieldDispatch@socialspider.com](mailto:EnfieldDispatch@socialspider.com) before the next deadline on Tuesday 15th June.

## Safe streets

*Dear Enfield Dispatch*

**D**uring the pandemic, people in London have rediscovered the simple act of walking – the oldest, cheapest and greenest transport there is. It has allowed us to stay healthy, happy, and connected to those around us.

But lots of us still struggle with narrow, cluttered, uneven pavements; crossings that prioritise cars rather than people; and growing numbers of speeding vehicles.

That's why I support Living Streets' manifesto for walking in London. It calls for politicians to pledge to tackle air pollution, transform our streets for people of all ages and abilities, make walking the natural choice for short journeys, and end pedestrian deaths and injuries on our roads.

It is time we redesigned our streets around people, not cars. That way we can all continue to enjoy the benefits of walking and healthier, happier communities.

**Alex McRae**

*Tenniswood Road, Enfield*

## Inert material

*Dear Enfield Dispatch*

**I**am sick to the back teeth of reading quotes from Enfield Council saying that people have been "spreading rumours" that Whitewebbs Park could be used for landfill. There is a single source for this idea – the council.

In 2019, Knight Frank, working on behalf of the council, issued a prospectus for Whitewebbs Park. In a section headed "potential uses" it stated that: "An independent report was conducted by LBE to ascertain the potential for landscaping. The agent [...] understands that the golf course alone has capacity for 150,000 to 200,000m<sup>3</sup> of inert material."

When it was pointed out that the prospectus contained this wording, the council stated: "The wording should have referred to 'soil' or 'specified soil and aggregates'. Soil is not classified as 'inert material', as it contains nutrients, while 'inert material' indicates waste/landfill."

With this evidence, to blame residents for the "rumour" is risible.

**Richard Stoney**

*Browning Road, Enfield*

## Outfoxed

*Dear Enfield Dispatch*

**R**egarding Adrian Day's comments in your last issue (*LTN battles*, Issue 32, Page 9) about Fox Lane Residents' Association (FLRA); the facts are not quite as he asserts. By dint of co-option (not election), Adrian and his pro-LTN (low-traffic neighbourhood) colleagues came to form the majority faction on the committee. Of the many committee meetings I attended in the months prior to the AGM, there was no discussion on the merits of LTNs. Debate centred entirely on the group's attempts to control the AGM agenda. It was a concerted attempt to turn the association into a single-issue pressure group.

I found this highly irregular and not in the interest of FLRA. The prime aim at the AGM was to resist this takeover and maintain the association's impartiality, integrity, identity, and its influence as a representative of the Fox Lane community. The voting on all issues was broadly 75% in favour of those propositions, which tells its own tale.

**John Macrory**

*Treasurer, Fox Lane Residents' Association*

## Bad skate

*Dear Enfield Dispatch*

**M**yself and my colleagues in the Conservative group are appalled at the state the Edmonton A10 skatepark has been left in by Enfield Council.

One of the main issues is that part of the skatepark has been torn up while being used as an access route for cemetery works. Not only has this area not been restored, but all the stones and gravel have not been cleared up. This spreads across the skatepark – causing a health and safety risk to users.

There is litter and rubbish across the site, broken floodlights, offensive graffiti, uneven and unsafe footpaths and overgrown grass and trees. Skatepark users have complained that the poor overall condition of the asphalt makes it impractical.

It is utterly disgraceful. The fact the council has failed to act on reports of these issues is even worse. Youngsters have been let down.

**James Hockney**

*Councillor, Bush Hill Park*

**NHS**



**After clean water, vaccination  
is the most effective public  
health intervention.**



**Community is at the heart of Edmonton Green Shopping Centre and that's why we support our local, small and independent retailers #shoplocal**

**EDMONTON  
GREEN**

## NAZ HAIR & BEAUTY

To view their full range of services please visit: [naz-hair-and-beauty.business.site](http://naz-hair-and-beauty.business.site) or call: 020 8807 8299 to book your appointment

Naz Hair & Beauty  
27 South Mall,  
Edmonton Green  
Shopping Centre



## NAIL WORLD

From manicures to pedicures, from basic to elaborate Nail world can do the lot. To book your appointment please call: 020 8803 9042

Nail World  
3 North Mall  
N9 0EQ



## LOLO NAILS



Visit us for a friendly and professional nail experience. Walk ins and appointments always welcome or call us to book in advance: 020 8807 4396

Lolo Nails  
62, The Market Square,  
N9 0TN

## LA GOLDEN NAILS



We are a small but cosy nail bar with friendly staffs, each capable of delivering professional range of nail treatments; manicures, pedicures, shellac, gel polish, powder, acrylic, glitter, custom designs and more...

Edmonton Shopping Centre  
020 8803 8886  
[lagoldennails.com](http://lagoldennails.com)

## JEM'S BARBER

Book your appointment today: 020 8245 4740 or for a full list of services please visit: [facebook.com/jemsbarbers/](https://facebook.com/jemsbarbers/)

Jem's Barbers  
Unit 9 The Concourse  
Edmonton Green  
Shopping Centre



## ILLY HAIR & BEAUTY



Illy Hair and Beauty offer a wide range of services from Eyelashes to wedding hair. To book your consultation please call: 020 8352 6803

Illy Hair & beauty  
18 North Mall  
Edmonton Green Shopping Centre

## DEBBIES' HAIR SALON



Specialist in Hair Extensions offering 20% Off Tuesday – Thursday

35 The Market Square  
Edmonton Green  
Shopping Centre  
N9 0TZ  
07943 315634



## BLADEZ HAIR STUDIO



Over the years we have grown and developed our own skills to fit in with the services that the client needs. We are able to offer services for afro hair or straight hair, it is important to adapt for the audience you have. For appointments please call 020 8245 7754

Bladez Hair Studio  
22 South Mall N9 0TN

## GLAMORIZED



Specialist in lash extensions and brow shaping, Call 020 8807 6043 to book your appointment

Glamorized Beauty  
Unit 19, The Market  
Edmonton Green  
Shopping Centre



Open 9:00am–6:00pm  
W [edmontongreencentre.co.uk](http://edmontongreencentre.co.uk)

T 020 8803 4414  
A 62 Market Square, Edmonton N9 0TZ



# Mother of murdered teen promotes anti-knife campaign

BY JAMES CRACKNELL

An Enfield mum who's son was murdered eleven years ago is one of five mothers leading a new campaign to tackle knife crime in the capital.

Yvonne Lawson's son Godwin, a promising young footballer aged 17, was killed in March 2010 when he tried to help his friends fend off a group of attackers. In the time since the tragedy, she has set up a charity in her son's name to provide more educational opportunities for young people in North London and, last year, was made an MBE for her services tackling knife and gang crime in London.

Now Yvonne is helping to lead a new anti-knife crime campaign, 'Hard Calls Save Lives', which is encouraging friends and family members to contact Crimestoppers with information about crimes that have taken place, or to help prevent crimes from taking place.

The campaign centres around a series of short films, where each of the five mothers involved reflects on the hardest calls they had to make after their sons were fatally stabbed. Yvonne and the others point out that by far the hardest call anyone could ever make is to inform someone of a family member's death.

She said: "I rang my sister and said I've just



Yvonne Lawson, from Enfield Wash, was made an MBE last year for her services tackling knife crime

been told Godwin has died. I just kept repeating 'died, died, died'. Godwin was stolen away from us in such a terrible way.

"My family is broken into pieces, just missing him. We didn't even get a chance to say goodbye, and he's never going to be there, he's never going to be part of us any more. The least we can do is use his memory to change lives."

Talking to the *Dispatch*, Yvonne added that

no-one should fear calling Crimestoppers, an independent organisation separate from the Metropolitan Police that guarantees to maintain the anonymity of anyone who calls in.

"We are aiming to encourage the community to get the courage and confidence to pick up the phone and report something to Crimestoppers if they have information about a crime.

"It could be the family of a victim or a perpetrator – it should not be seen as 'snitching' – you can do it anonymously. I know it can be awkward if you know a member of your own family is carrying a knife and it is hard to know what to do, but this campaign is urging them make that call."

Yvonne is already active in various crime-reduction programmes, many of them focused around education, with the work she does with her charity, Godwin Lawson Foundation.

"It fits well with the work we have done previously with young people and their families, engaging them in positive initiatives," Yvonne said. "It is about preventing as well as solving crimes. If you can make a call when you have information that can help prevent a crime, you should do it. We want people to empathise with those who have gone through it.

"Everyone has a role to play and to take responsibility – we are part of the same community."

For more information about Hard Calls Saves Lives and to watch Yvonne's appeal video:

Visit [hardcallsavelives.co.uk](http://hardcallsavelives.co.uk)

To contact Crimestoppers anonymously:

Call 0800 555 111

Visit [crimestoppers-uk.org](http://crimestoppers-uk.org)

For more information about Godwin Lawson Foundation:

Visit [godwinlawsonfoundation.org](http://godwinlawsonfoundation.org)

## Bennetts

### CAR PARTS, TOOLS & ACCESSORIES

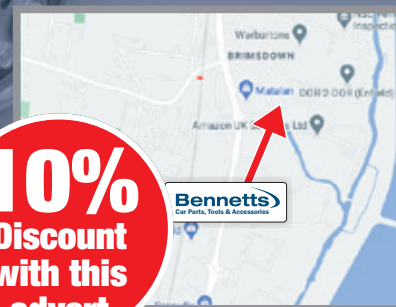


FRIENDLY SERVICE | RETAIL SHOP | ESTABLISHED SINCE 1954 | QUALITY PRODUCTS | COMPETITIVE PRICES

## WE SUPPLY ALL YOUR:

- BRAKE DISCS, PADS AND CALIPERS
- HAND TOOLS & CAR CARE PRODUCTS
- ALTERNATORS & STARTER MOTORS
- EXHAUSTS & CATALYSTS
- MOT PARTS • SUSPENSION
- SERVICE KITS • POWER TOOLS

**10%**  
Discount  
with this  
advert



UNIT 6, SOVEREIGN BUSINESS CENTRE,  
STOCKINGSWATER LANE, ENFIELD, MIDDLESEX EN3 7JX





# New opportunities for talented young performers

Platinum Academy of Performing Arts is this year offering full scholarships to new students worth up to £15,000

Platinum Academy of Performing Arts is based at Millfield House



With the help of Big Narstie's ribbon-cutting skills, Platinum Academy of Performing Arts was officially opened last September at Millfield House in Edmonton.

The academy is now a full-time college where young people from the age of 16 can train, in all areas of perform-

ing arts, and receive a national diploma qualification at the end of their two or three-year programme.

Platinum is now enrolling new students for the next academic year, starting in September. Thanks to an investment from local businesses committed to supporting the arts and cre-

ating opportunities for young people, Platinum will this year be offering full scholarships to new students worth up to £15,000. Auditions are taking place over the next few months for local young people who have a passion and drive for the arts.

Principal and founder Nina Lewis-Hart says: "At Platinum Academy of Performing Arts, we want to share a united passion for our industry. We are dedicated to leading training in the performing arts and access to higher education and career opportunities in the creative industries.

"Our training is delivered by a faculty of experienced professionals and practitioners. Together, they enable our students to develop the skills and techniques to excel into highly-competent performers and artists who are ready to pursue a career or begin higher educational training in the arts."

For more information and to apply for a scholarship: Visit [platinumperformingarts.co.uk](http://platinumperformingarts.co.uk)



Elaine Graham-Leigh  
Credit: Piers Allardyce

## Writing the future

Local author and activist Elaine Graham-Leigh introduces her debut science-fiction novel

My debut novel imagines a future where humanity has gone to the stars, but taken exploitation and oppression with them.

*The Caduca* tells the story of two women – an alien diplomat and a human guerrilla fighter – caught up in events when the major power in the galaxy sets its sights on Benan Ty, a poor ex-Terran colony planet.

In the past year or so, many of us have probably had moments of wishing ourselves a million miles away from here. It's not surprising that sales of books in 'escapist' genres such as science fiction and fantasy increased over the last year.

Although set nearly 900 years in the future, *The Caduca* is rooted in the politics of today's world. For me, the best science fiction isn't so much about the future and technology as it is about the present. The point is to use an imagined future to ask why the world is as it is, and how it could be different.

In *The Caduca*, I'm looking at imperialism and resistance; at bombing countries in order to 'save' them and how to fight back without becoming as bad as the powers you're opposing.

So, what does this have to do with Enfield? It's not, of course, that we've faced an alien invasion, nor that we're living under a murderous dictatorship, as the people of Benan Ty are at the start of the novel. These are, however, ideas that I've been working out over two decades of being a local political activist, from marching with Enfield Stop the War in 2003, helping to organise last summer's Black Lives Matter protest in Palmers Green, to being part of Enfield Climate Action Forum.

Local campaigning, whether on local or national issues, might seem a world away from wars on imagined planets, but the questions are the same. How can we work together? What can we do when we can't trust those in power? And can we really change anything?

*The Caduca* is a way of exploring those questions, as well as, I hope, providing some much-needed escapism and entertainment. Sometimes you have to stand far, far back to see what's right in front of you.

'The Caduca' by Elaine Graham-Leigh is published by The Conrad Press. Visit [theconradpress.com](http://theconradpress.com)

# To Zinfinity and beyond

Enfield jewellery maker Zoe White on the inspiration behind her brand Zinfinity

In case no-one told you today, you are fabulous!

I'm all about the happy. As a designer-maker, I made the bold decision to create inclusive and sensory jewellery. The fashion world is still so old-fashioned, it only seems to design for one type of person.

I make my jewellery fit your body and your needs, because I believe you are perfect as you are. While I carry a little stock, for those who need last-minute gifts, or to sell at on-the-day events, most of my jewellery is made to order. You choose the metal, size, material, colour – all to make you feel as fabulous as you are. Jewellery should fit you and not the other way around.

There is something about jewellery that makes us feel happy. We feel pride wearing jewellery; a tiny piece can hold so much emotion within it, making it far more precious than its core materials. I believe that jewellery can be interactive, exploring the senses of smell, sight and touch.

My jewellery is more than the sum of its parts. Everything has a message, a

meaning or a story behind it, for you to hold. Mine is a personal service.

I'm an inclusive jeweller. This is a term that many people don't seem to understand. Inclusive means for all, so no-one is left out. I make bracelets that can be put on one-handed; jewellery that uses Braille with empowering words; rings that can be worn with arthritic fingers. I particularly like my magnetic clasps;



Zoe White makes and sells her own handmade jewellery

this means you can put on bracelets and necklaces by yourself. Why should we have to live with someone to put on a piece of jewellery? I think we have evolved beyond that.

I also run super fun creative workshops for all ages and abilities. Being creative is fun and we are all creative, even if we don't think we are. We make lots of creative decisions in a day; what clothes to wear, how to decorate your home, and even those doodles you do while on a boring Zoom call!

A huge range of creative workshops can be found on my website, Zinfinity. All are about teaching a skill and helping the participants express themselves. I'm not about right and wrong – I believe in learning, exploring and everyone having fun.

During the pandemic, because I couldn't hold in-person workshops, I also created craft packs so you can be creative at home in your own time. They cover a range of materials, subjects and budgets.

Find out more about Zoe White's jewellery and creative workshops: Visit [zinfinity.co.uk](http://zinfinity.co.uk)



# Start your engines

*The 'queen of Enfield' announces the launch of her debut single*

BY JAMES CRACKNELL

Sissy Lea is the alter ego of cafe owner Massimo Malluzzo

The owner of an Enfield cafe has released his first song – under the guise of his popular drag persona 'Sissy Lea'.

Massimo Malluzzo, who originally hails from Sicily, has run Lancaster Road cafe Zippola since 2015. But, in recent years, Massimo has become well known locally for something else entirely.

"Since I started this new journey as a drag queen I have built up a reputation," says Massimo. "The customers [at Zippola] have supported me with everything I do."

Sissy Lea has been described as the 'queen of Enfield' for her crowd-pleasing, camp and sassy persona. The drag name is inspired by the Italian island where Massimo was born.

Before the pandemic, Sissy Lea was performing regularly at Zippola and elsewhere, and now with



most restrictions lifted she is again hosting live gigs at the venue – while helping promote her new song *Camouflage Veil*.

"I am a live singer and it has always been my dream to have my own original song. I began to work with a producer on this dancy pop song. I wrote the lyrics and melody. It's very catchy – it will stay in your head!"

Explaining the idea behind *Camouflage Veil*, Sissy said: "It's a metaphor for when we try to hide by blending in the background out of fear of being seen as 'different'.

"The song is all about standing out and being ourselves. It doesn't matter if you're not a dancer, everyone can dance. You shouldn't have to impress anyone

else – just impress yourself."

*Camouflage Veil* was released on 22nd May and Sissy is now promoting it with a series of gigs. As well as Zippola, Sissy Lea is set to perform at a number of other venues including The City

of Quebec in Marble Arch. She is also hosting a tour of drag queens from the Netherlands. A full list of dates

can be found on Sissy Lea's social media platforms.

*Camouflage Veil* is available to stream from Spotify and other streaming services.

Follow Sissy Lea on social media:

Facebook /Sissy Lea

Instagram @sissylea.queen

YouTube Search 'Sissy Lea'

Advertisement

## Our homes in Edmonton are *happy* places to live



Four Seasons  
HEALTH CARE

We pride ourselves on having happy homes, where residents and their families can enjoy spending quality time with each other and develop new friendships along the way.

We provide residential care for people who need help with daily tasks, and nursing care for those who have complex medical needs. We also provide both residential dementia care and 24-hour nursing dementia care for our residents who require it.

Our residents are supported to maintain their independence and individuality, encouraging social activity and building relationships.

Murrayfield Care Home 020 8108 9029

Sunbridge Care Home 020 8108 9039

Safely welcoming new residents [www.fshc.co.uk](http://www.fshc.co.uk)



Face-to-face  
visits  
available!





# Patient participation is a virtue

*Patient participation group chair Janice Downing on why more people should consider joining their local PPG*

Every doctor's surgery has a patient participation group (PPG), but what are they?

I am chair of Boundary House and Forest Road surgery PPGs. A PPG is a group of patients, carers, GPs and staff who meet to discuss issues and experiences with the aim of improving services for the whole of the practice population.

Patients can become more involved and make suggestions about the healthcare services they receive. A good example of this is blood tests; they are now being done at our surgery again instead of at North Middlesex Hospital.

The PPGs have worked closely with the hospital's senior managers, head pharmacist and senior nurses to improve patient experience on discharge from hospital, and to improve access to the hospital pharmacy. Even the car parking system has been improved!

Patients and GP staff work as a team to review and improve practice systems and procedures. This way, PPG members gain so much insight into how the practice works and can understand the reasons behind the systems, reducing their stress and frustration.

We also conduct annual patient surveys. Topics covered include appointment systems, telephone access, the patient group, and reception staff. This has resulted in many changes to the appointment system, the purchase of a new and improved telephone system, PPG members attending staff meetings, and chang-

ing the time of our meetings so that mums who have to do the school run can attend.

Recently, an elderly PPG member was upset when she was charged for a home delivery of her repeat medication. She could no longer walk to Boots. After discussion with the PPG, Boots changed their policy and now charge for home delivery on a case-by-case basis. A real coup for patient power!

**“You will get to be more involved with the practice, make improvements, learn about your practice and the NHS”**

Members of the PPG were on the interview panel when the practice was recently recruiting for a new GP. An actor played the part of the patient and the interviewees had to conduct a mock consultation in front of the PPG panel. This gave great insight to the members as to which candidate they preferred. It was great fun and the patients felt privileged to help choose their new GP!

PPGs are open to every patient on the GP practice list. Everyone is encouraged and is welcome to join – there are no other membership requirements.

You will get the opportunity to be more involved with the practice, to make improvements, learn about your practice



A pre-pandemic activity hosted by one of the patient participation groups at Forest Primary Care Centre

and the NHS, medical tests and procedures, and gain a better understanding of disease management. I recently asked our members to write a sentence about their experience of being a member of the PPG – the most used word was ‘knowledge’.

At Boundary House Surgery and Forest Road Surgery PPGs we have presented education events on healthy eating, diabetes management, help and advice for carers, men's health, cervical screening, and have supported social prescribing by hosting quizzes, exercise classes for over 65s, par-

ticipated in local events in Jubilee Park, and even joined a parade at Edmonton Carnival!

We also publish quarterly newsletters, keeping patients informed of current health information and guidelines and list helpful telephone numbers.

So make new friends, gain knowledge, and help to improve your GP practice by joining your surgery's patient participation group. You will be most welcome!

**For more information contact your GP practice directly or, for general advice, contact Janice:**  
Email [nlcccg.boundaryhousesurgery@nhs.net](mailto:nlcccg.boundaryhousesurgery@nhs.net).

# Hospital appoints new boss

BY JAMES CRACKNELL

North Middlesex University Hospital NHS Trust has appointed a new chief executive.

Dr Nnenna Osuji will take up her new role this summer after leaving her current job as deputy chief executive and medical director at Croydon Health Services NHS Trust in south London. An experienced haematologist, she will continue working as a clinician.

Dr Osuji will replace Maria Kane, who stood down in March after three years at the helm. Andy Heeps is currently serving as interim chief executive. The new incoming boss said: “It is an incredible privilege to join the local North Mid community, amazing staff, patients and partners to take forward the ambitious plans for the trust, building on the foundations laid by Maria Kane and continued by Andy Heeps towards providing outstanding care to local people.

“It is particularly exciting as we embark on a new chapter starting with a centenary year, which gives opportunity to celebrate the vibrant and exciting history and diversity of North Mid.

“I look forward to jointly leading the charge in cementing North Mid as a pivotal partner in the local and wider health and care system and to championing meaningful improvements for our people of Enfield and Haringey.”

North Middlesex University Hospital NHS Trust chair Cedi Frederick said: “Nnenna's strong experience as a leader and clinician will bring significant strengths to North Mid, and I would be pleased if you would join me in extending her a warm north London welcome, and a commitment to investing even further in our developing our productive relationships with local and regional partners, patients, and local people.”

The announcement follows the opening

in April of a new £4.4million children's ward at North Mid. The paediatric assessment unit will help improve the care provided for young patients and their families and is located next to the hospital's children's emergency department, itself only opened last year and already one of the busiest children's emergency wards in London.

Andy Heeps said: “This investment has helped us to provide additional treatment space, reduce overcrowding, and further improve on robust infection control measures already in place. Not only will it make it easier for staff to provide safe care but it will help us better support our community.”

Earlier this year, major plans were also announced for the construction of 220 homes on part of the Edmonton hospital's car park, on land recently sold to the Greater London Authority. New hospital facilities are set to be part of the site's long-term redevelopment.

Advertisement

## LICENSING ACT 2003 Notice Of Application for a Premises Licence

Notice is hereby given that **Fatmir Prenga** has applied to the Licensing Authority of London Borough of Enfield for a Premises Licence to permit:

- **New Premises Licence to supply of alcohol on and off the premises with food only from Monday to Sunday 11:00 to 22:30 including bank holidays and public holidays for the premises Milano Pizzeria**
- **Situated at 378 Green Lanes, Palmers Green, London N13 5PD**

The public register where applications are available to be viewed by members of the public can be accessed online by visiting <https://new.enfield.gov.uk/services/business-and-licensing/> and following the link to the Licensing Register. Email [licensing@enfield.gov.uk](mailto:licensing@enfield.gov.uk) to request a copy of the application within 28 days from the date of this notice.

Any person wishing to submit relevant representations concerning this application must give notice by emailing [licensing@enfield.gov.uk](mailto:licensing@enfield.gov.uk), giving in detail the grounds of the representation no later than: **16/06/2021**

Representations received by post will not be accepted during the Covid-19 emergency period. The Council will not entertain representations where the writer requests that his identity remains anonymous. Copies of all representations will be included in the papers presented to the Licensing Authorities Sub Committee and will therefore pass into the public domain.

**Representations must relate to one or more of the four Licensing Objectives: the prevention of crime and disorder, public safety, the prevention of public nuisance and the protection of children from harm.**

It is an offence, under section 158 of the Licensing Act 2003, to knowingly or recklessly make a false statement in connection with an application for a premises licence. A person guilty of an offence is liable on summary conviction to a fine not exceeding level five on the standard scale.

**Dated:** 19/05/2021 **Bilimway:** 07772 594 087



Advertisement



**HARINGEY  
SIXTH FORM COLLEGE**  
SUCCESS AMBITION RESILIENCE

**NOW  
TAKING SEPT 21  
APPLICATIONS**



# A-LEVEL VIP DAY

**23 JUNE 2021 9.30AM-3PM**

# BTEC VIP DAY

**24 JUNE 2021 9.30AM-3PM**

Attend our VIP Day and have an interview - a real chance for you to see why we are **#MoreThanACollege**  
Opportunity to complete your application process with us and your place will be **guaranteed!**  
Open event, interview and offer all in one!

[www.haringey6.ac.uk](http://www.haringey6.ac.uk)



**#MoreThanACollege**



## AROUND THE BOROUGH

## HERTFORD ROAD

## Call for better banking access

BY JAMES CRACKNELL

LOCAL RESIDENTS ARE FINDING it “consistently more difficult” to access cash points and banking facilities in Hertford Road, according to Enfield North MP Feryal Clark.

The Labour MP says the recent closure of the Barclays Bank branch in Enfield Wash and impending closure this August of the Santander branch in Enfield Highway will “further entrench the socio-economic divides we see across the borough”.

It will mean that, aside from two post offices, the 2.5-mile stretch of Hertford Road between the Southbury Road junction in Ponders End and the Enfield borough border in Freezywater will be devoid of bank branches. Many of the remaining cash points available in the area charge for withdrawals.

Feryal said: “Many small, local, independent businesses still rely on cash, alongside many people, particularly older people, who struggle to access online banking and need physical banking support.”

“While I understand the needs



Free cash points are few and far between along Hertford Road  
Credit Toa Heftiba/Unsplash

for banks to keep up with developments in digital technology, they still hold a degree of social responsibility towards the communities they have served.

“No-one should feel penalised or ignored for not having the technology required to access the latest developments in online banking.”

The Barclays branch in Enfield

Wash closed last May. The bank stated at the time that the number of transactions had gone down in the previous two years and that 89% of branch customers “use other ways to do their banking such as online and by telephone”. It added that just 38 customers had been using the branch exclusively for their banking.

Santander, explaining the reasons for closing its Enfield Highway branch, similarly stated that 89% of customers “already use a variety of ways to complete their banking” and that just 106 customers were exclusively using the branch. The next nearest Santander branch is in Enfield Town, 2.7 miles away.

Feryal has now launched a consultation with her Enfield North constituents to gather more information about the difficulties people have accessing financial services. She added: “I want to see community banking and cash access facilities which work for our local community.”

To take part in Feryal’s banking survey online, visit [bit.ly/CashAndBankingAccessSurvey](https://bit.ly/CashAndBankingAccessSurvey)

## EDMONTON

## Park mural project

A PLAN TO COVER A RUN-DOWN building in Pymmes Park with a new mural has won backing from the Mayor of London.

The old visitor centre in the park, originally a Second World War civil defence site, is currently closed to the public but is sometimes used as a filming location because of its unique setting. Liv Wright, an artist from the Lewisham School of Muralism, recently launched a proposal to cover the building with a mural.

The project has now won a £4,915 grant via the Mayor of

London’s £500,000 ‘Make London’ programme designed to support “creative and community-led crowdfunding campaigns”. It has taken the project’s total to £7,350, exceeding its target.

Liv wants local people to be involved in creating the artwork and says her aim is to “make a building, that has failed to remain active as a community centre on the inside, [into] a community art piece and point of social connection on the outside – with the hope of reopening the space for community purposes”.

## WINCHMORE HILL

## Sewage in stream

SEWAGE HAS BEEN ENTERING a Winchmore Hill stream thanks to misconnected plumbing in the area, according to the Environment Agency (EA).

Together with Thames Water, the EA is investigating reports that sewage from people’s homes has been entering Houndsden Gutter, alongside Houndsden Road. Locals described a “pungent odour” in the area.

An EA spokesperson told the *Dispatch*: “This ongoing incident is caused by misconnections from private drainage at residential properties.”

“The Environment Agency is cur-

rently working in partnership with Thames Water to investigate and identify misconnections throughout the catchment. This will take a few months, at which point we will be able to share our findings.”

A Thames Water spokesperson said: “We’re looking at various ways to prevent sewage spills, including an investigation into misconnected appliances releasing wastewater via the surface water drainage network. We have met with the EA and other local stakeholders to agree a joint approach to tackling this complex problem.”

## EDMONTON

## Industrial estate to be sold off by council

BY SIMON ALLIN,  
LOCAL DEMOCRACY REPORTER

AN INDUSTRIAL ESTATE OWNED by Enfield Council could be sold off in a drive to cut costs and move more staff to town centres.

Claverings Industrial Estate in Edmonton could be redeveloped “to provide modern, energy-efficient employment space”, according to a council report.

The report says work to bring the 1950s estate up to the necessary energy efficiency standards would cost £19million and redevelopment would be “more viable”.

Cabinet members agreed the principle of its sale as part of the coun-

cil’s ‘build the change’ programme, which is designed to enable the local authority to work from “fewer but better-equipped buildings”.

Mary Maguire, cabinet member for finance, said: “Claverings Industrial Estate was built in the 1950s and is no longer fit for purpose.”

“Life has moved on, technology has moved on, the way we work has moved on, and what residents expect has moved on.”

The council occupies 39% of the industrial estate and leases the rest to businesses and other organisations. Council staff currently working on the estate will be moved to the civic centre in Enfield Town.

Cllr Maguire added: “Disposal for

redevelopment is the most sensible option. As part of any sale or redevelopment, the cabinet agrees the council will stipulate conditions to ensure possible occupiers are accommodated in new premises as part of that phased development.

“We have also got Montagu Industrial Estate, where redevelopment started this spring, and there may be opportunities for businesses and organisations to relocate there.”

Council leader Nesil Caliskan said it was the right thing to do for residents who “need to receive the support of the council and deserve to be able to find themselves in an environment that is fit for purpose”.

## BUSH HILL PARK

## Garden transformation

THE GARDEN AT SALISBURY House is set to be transformed by a local firm.

Dean Blunkell and Stewart Roberts from We Are The Garden Makers have been commissioned by Enfield Council to design and create a new outdoor space at the arts centre in Bury Street West.

Dean says: “At the heart of the garden design project is community engagement and the impor-

ance of heritage.

“The project will include a knot garden and new planting beds inspired by the interior decoration of this fascinating and hidden gem.”

“A greenhouse will give opportunities for plant propagation with raised beds for a cross-generational food growth project. A woodland walk will include habitats for wildlife and increase the garden’s biodiversity.”



# Councillors demand more family-size homes at Meridian Water

*Planning committee debate preceded vote to approve the project's first 300 homes*

BY JAMES CRACKNELL

Councillors have raised concerns over the number of family-sized homes proposed at Meridian Water. During a planning committee debate over the latest application to come forward as part of Enfield Council's flagship redevelopment project, councillors complained that only one-in-four of the 300 homes proposed had three or more bedrooms.

But the committee later approved detailed plans for the first phase of the 'Meridian One' development in Willoughby Lane after being told by council officers that they did not have the power to alter the proposed mix of housing on the site, since minimum levels had previously been agreed as part of an outline application four years ago.

The decision means construction can now begin on the very first homes to be built at Meridian Water, a decade after the council began drawing up its £6billion plans for 10,000 homes across the 85-hectare industrial zone straddling the River Lea.

Last month's committee debate began with a speech by Matt Burn, of campaign group Better Homes Enfield, who said: "There are not enough homes with three or more bedrooms. The evidence that more are needed is overwhelming.

"Enfield is around 3,000 homes short of meeting its core policy target for three-plus bedroom homes, but is well ahead of the target for one or two-bed homes.

"Edmonton has very high levels of overcrowding in the private rented sector, which is linked to serious health

issues. Thousands of children are living in temporary accommodation in Enfield.

"The average waiting time for council homes with three-plus bedrooms is five or six years, with many families waiting more than ten years. The wait is almost twice as long as for homes with one or two bedrooms.

"If the council can't build more three-plus bed homes on a site like this, on the council's own flagship development, then where will these homes be built? Who is going to build them? And more importantly, when will these homes actually get built?"

Sarah Parkinson from Vistry Partnerships, the council's appointed developer for Meridian One, explained that the 'affordable' housing provision for the whole development had been increased from the outline plans approved in 2017 and would be brought forward, so that most of the cheaper homes are built in the first phase.

She said: "We are committed to delivering significantly greater numbers of affordable homes, moving to 50% across the entire Meridian One site, including a greater number of London affordable rent homes.

"We are committed to the early delivery of affordable housing, with 272 of the 300

***"We have large families in Edmonton and we really need to make sure we address this"***

Meridian One is being built on a former gasholders site, directly west of Meridian Water Station, and will include at least 725 homes in total



homes – 91% [of the first phase] – being affordable. The affordable rent homes, once built, will be handed over to the council, while a registered housing provider will take on the shared ownership homes.

"The original application allowed the forward delivery of market housing, but our revised approach sees the delivery of affordable housing first. This application will deliver a range of dwelling sizes to meet housing needs."

Of the 272 'affordable' units, 154 will be shared ownership and 118 will be for rent. Of the 300 homes in total, 75 will have three or more bedrooms, representing 25%.

Council officer Sharon Davidson told councillors this housing mix "exceeded" what was originally agreed in 2017 when the plans were first approved and that councillors only had the power now to alter the scheme's layout, design and landscaping. However, she said there may be another chance to increase the number of family-sized homes in the second phase of the scheme, if Vistry Partnerships submits a full planning application.

Community First councillor Daniel Anderson remained unconvinced and said: "I am not sure how we have arrived at what is deemed to be appropriate levels of housing mix."

Labour committee member Hass Yusuf said: "We do need more family-size units because that is what many pressure groups and residents are concerned about."

Tory councillor Maria Alexandrou said:

"How are on earth are we going to solve this? We need to build homes for families."

Kate Anolue, a Labour member, said: "We have large families in Edmonton and we really need to make sure we address this."

Conservative Mike Rye added: "It is a missed opportunity and a huge disappointment."

In the vote on the plans following the debate, seven councillors voted in favour, with one against and three abstentions.

Advertisement

## LICENSING ACT 2003 Notice of Application for a Variation of Premises Licence

Notice is hereby given that **Sotiris Joannou** has applied to the Licensing Authority of London Borough of Enfield for a variation of the Premises Licence to permit:

- The proposed variation is to include the sale by retail of alcohol for consumption on the forecourt of the premises (c) known as Babinondas situated at 598 Green Lanes, London N13 5RY

The public register where applications are available to be viewed by members of the public can be accessed online by visiting <https://new.enfield.gov.uk/services/business-and-licensing/> and following the link to the Licensing Register. Email [licensing@enfield.gov.uk](mailto:licensing@enfield.gov.uk) to request a copy of the application within 28 days from the date of this notice.

Any person wishing to submit relevant representations concerning this application must give notice by emailing [licensing@enfield.gov.uk](mailto:licensing@enfield.gov.uk), giving in detail the grounds of the representation no later than: **22 June 2021**

Representations received by post will not be accepted during the Covid-19 emergency period. The Council will not entertain representations where the writer requests that his identity remains anonymous. Copies of all representations will be included in the papers presented to the Licensing Authorities Sub Committee and will therefore pass into the public domain.

Representations must relate to one or more of the four Licensing Objectives: the prevention of crime and disorder, public safety, the prevention of public nuisance and the protection of children from harm.

It is an offence, under section 158 of the Licensing Act 2003, to knowingly or recklessly make a false statement in connection with an application for a premises licence. A person guilty of an offence is liable on summary conviction to a fine not exceeding level five on the standard scale.

Dated: 25/05/2021



Vistry Partnership's plans for the first 300 homes at Meridian One include a new park area



## Councillor quits Labour to join Greens

*Charith Gunawardena became eighth councillor to leave Enfield Council's Labour group in last year*



Charith Gunawardena pictured left with Green Party leader Sian Berry

BY JAMES CRACKNELL

Enfield has its first-ever Green Party councillor – after another member quit the Labour group.

Charith Gunawardena, who represents Southgate ward, became (at the time) the eighth Labour councillor to either quit the party or resign as a councillor in the last 12 months.

In his resignation statement Cllr Gunawardena said the Labour leadership at the civic centre had made “many irresponsible choices”, citing issues such as affordable housing, council debt and fly-tipping.

Cllr Gunawardena said: “I will continue to serve Southgate, but now as a councillor representing the Green Party, whose policies for a sustainable society incorporate key principles to tackle the climate crisis and deliver social justice.

“These are things I campaigned for and will continue to defend on behalf of Enfield’s residents. I strongly believe this to be the best way to serve my constituents.

“Unfortunately, I have recently felt restrained from championing the core needs of local residents as a Labour councillor and have decided to resign.”

Cllr Gunawardena said tackling the housing crisis was his key priority. “There are not enough genuinely affordable homes

being built (especially family-sized homes), there are high levels of overcrowding, long waiting lists, and too many people in temporary accommodation.

“The borough must also play its part in responding to the environmental crisis, which will only successfully be achieved by offering considered, meaningful and evidence-based responses and policies.”

Cllr Gunawardena added that he was seeking “an inclusive political culture supporting open, honest and transparent policy discussions to reach solutions that benefit residents”.

Several other former Labour councillors have made similar comments about feeling unable to shape council policy. Six of them are part of a new political group on the council, Community First, and Cllr Gunawardena said he would also now be part of the Community First grouping on the council.

He said: “As a member of the Green Party, I will be better placed to scrutinise and challenge decisions that will have a lasting environmental and social impact in the borough for decades to come, and defend processes essential for preserving strong local democracy.”

Sian Berry, the Green Party’s co-leader and London Assembly member who also polled third behind Sadiq Khan and Shaun Bailey in the mayoral election, said: “I am thrilled

to have Charith join our growing team of councillors across the country and in London.

“Greens across our city will benefit from his experience and enthusiasm, and we will support his efforts to win greater transparency in major developments and council scrutiny across all issues affecting our citizens.”

Across the three Enfield Council by-elections held last month, the Green Party’s vote share rose by 5.3%, while the party won an additional 99 seats around the country and enjoyed its best-ever results at London City Hall.

**“I have recently felt restrained from championing the core needs of local residents”**

An Enfield Green Party spokesperson said: “Charith is a great ambassador for our community and we are looking forward to working closely with him for the benefit of Enfield.”

Council leader Nesil Caliskan said: “Cllr Gunawardena represents Southgate and not Edmonton which is where the Meridian Water development is happening, delivering thousands of affordable homes for local residents.

“I find his choice of political party odd as this Labour administration is taking radical steps to tackle climate change, while the councillor has opposed the administration since the election.

“Individuals that do not share the progressive and trade unionist values of the Labour Party are naturally more comfortable in opposition political parties.”

Advertisement

## THE RUTH WINSTON CENTRE IS NOW OPEN

We are delighted to inform all of our members and the local community that we have now re-opened

We are open for drop ins and will be introducing classes at the end of June

If you would like to come in for a cup of tea and company then please call the centre on 0208 886 5346 to book your slot

Slots are either 10am to 12pm or 12pm to 2pm



**WELCOME BACK**  
[www.ruthwinstoncentre.com](http://www.ruthwinstoncentre.com)



Enfield Town and FC United previously played for the Brian Lomax Trophy at the QE2 Stadium in 2019 Credit Phil Davison



## Celebration of fan ownership

*Enfield Town set to make trip to fellow fan-owned club FC United in pre-season friendly, writes Andrew Warshaw*

As preparations get under way for what every fan hopes will be the club's first uninterrupted campaign since 2018/19, Enfield Town FC have announced a landmark pre-season friendly.

On Saturday 24th July the Towners will square off against FC United of Manchester to compete for the Brian Lomax Trophy, specifically designed to celebrate fan ownership. The cup is named after Brian Lomax, the former managing director of Supporters Direct who passed away in 2015 – he is considered the 'founding father' of the supporters' trust movement.

Like Enfield, FC United are a fan-owned club and also play in step three of the non-league pyramid, in their case the Northern Premier League. They famously set themselves up to protest against the takeover of Manchester United by the Glazer family, an issue that has come to the fore again in recent months.

Ever since the collapse of the European Super League in April, the fan ownership model – giving supporters a greater say in the running of their club – has received widespread support and interest. Enfield Town and FC United are prime examples of how such inclusivity can work and, with the biggest club in the

borough celebrating its 20th anniversary this summer, the fixture has a special resonance.

Looking ahead to the game in Manchester, Towners chairman Paul Reed said: "I'm delighted that we have been able to organise another fixture with FC United, this being our 20th year.

"It's great that we can mark the occasion with another incredible fan-owned club. The game at our own

***"It's great that we can mark the occasion with another incredible fan-owned club"***

stadium two years ago was a brilliant night, with good football coupled with fantastic camaraderie among supporters, and I'm sure this fixture will be equally as good.

"Just as importantly is that chance to play for the Brian Lomax Trophy. Brian was an incredible inspiration in the formation of our club and encouraged, guided and supported us and many other clubs through our early months and years. It's a great honour to be able to play for a cup in his name."

In welcoming Enfield Town FC, FC United board chair Adrian Sed-

don also expressed his enthusiasm towards the upcoming celebration of fan-owned football. He said: "After two Covid-hit seasons, our trip down to Enfield seems like a lifetime ago, but our supporters won't have forgotten the warm reception we received and we are delighted to finally get the opportunity to welcome them to Broadhurst Park.

"After all football's issues over the last few weeks we are proud to be announcing what will be a real celebration of fan ownership and friendship with a club that blazed the trail for ourselves and others to follow."

Enfield Town have also announced a comprehensive list of pre-season friendlies,

all of which promise to be competitive affairs. Following the FC United showpiece game, on Tuesday 27th July Town take on Boreham Wood, who play in the National League two divisions higher, followed by another home game against Hayes and Yeading on Saturday 31st July.

Town then visit manager Andy Leese's old club Chesham United on Tuesday 3rd August, rounding off with a home game against Grays Athletic for the FSA Supporters Shield on Saturday 7th August – a week before the scheduled start of the new league season.

## Community basketball project launched

BY OLIVIA DEVEREUX-EVANS

A new community basketball project has launched in a drive to get Enfield's young people active again post-lockdown.

The #Ball4Life Community Project is funded by Sport England via its Tackling Inequalities Fund, which aims to reduce the negative impact of coronavirus and the widening of the inequalities in sport and physical activity. Enfield Scorpions, based at Oasis Academy Hadley in Ponders End, is one of three basketball teams in London selected to take part of the project.

GG3x3, the UK's largest non-profit basketball platform, is leading the #Ball4Life initiative. The organisation provides basketball tournaments and training as well as motivating and inspiring the community.

Enfield Scorpions runs seven sessions a week to cater for young people aged between six and 18 years. Hannah Robson, the club's coach and founder, said: "We're really excited to be teaming up with GG3x3 to provide this fantastic opportunity for young people to get involved in basketball.

"This has come at the perfect time for them after such a long lockdown winter."

Fun activities and basketball will be offered to young people for three months. They are being run to help those who may have found lockdown very challenging. Sessions are targeted at those from underrepresented communities, with learning difficulties, and those with barriers to participation.

Martin Dyan, Founder of the GG3x3, said: "We are so pleased to have secured the funding and have put together a fun and exciting programme.

"Through our #Ball4Life Community Project we have the opportunity to bring positivity to young people all over London. With the government supporting grassroots basketball in this way, young people will benefit mentally and physically, both on and off the court.

"I am very thankful to Basketball England for supporting this project and to all the partners, who have put an amazing amount of effort in to make this happen. I can't wait to get started."

For information on Enfield Scorpions:  
Visit [enfieldscorpions.wordpress.com](https://enfieldscorpions.wordpress.com)



Enfield Scorpions, a youth basketball team based in Ponders End



# Support independent local journalism

## What we do

Here at *Enfield Dispatch* we do things differently. We combine professional journalism with voluntary contributions from people who live and work in the borough and create content which is responsive to and reflective of the community.

These are challenging times for print media with many newspapers closing and advertising revenue in decline, but our not-for-profit model offers a new approach to creating local journalism which is inclusive and accountable.

## How you can help

As a not-for-profit publication we rely on the generous support of our community. We look to our readers, who recognise the value of independent journalism, to help support us.

You can do this by becoming a member either as an individual or as an organisation. See the rewards opposite and once you've decided what package you would like, visit our website:

[enfelddispatch.co.uk/join](https://enfelddispatch.co.uk/join)

## Individual rewards

### £3 per month upwards:

Name in print and online, pin badge

### £5 per month upwards:

Name in print and online, pin badge, tote bag, paper posted to you every month

## Organisational rewards

### £10 per month:

Name in print and online, 10% discount on advertising

### £20 per month:

Name and logo in print and online, 20% discount on advertising

### £50 per month:

Name and logo in print and online, 40% discount, six free small adverts per year

## Members

Derek Grant, Michael Dickinson, Michael Cole, Young Notes, Ed Balleny, Natasha Boydell, Elizabeth Crosthwait, Richard Stones, Philip Ridley, Suzanne Beard, Chris Kaufman, Martyn Stogden, Susan Cook, Rupert Price, Meryn Cutler, Andrew Irvine, Basil Clarke, John Naughton, Right at Home Enfield, MumSing Choir, Penelope Williams, Lloyd Tew-Cragg, Andrew Warshaw, Anna Crowley, Neil Churchill, Karl Brown, Anthony Fisher, Dan Wright, Kay Heather, Julia Mountain, Jerome O'Callaghan, Carole Stanley, Mervyn Maggs, Aditya Chakraborty, Norman Bennett, Vivien Giladi, Greg Andrews, The Old Enfield Charitable Trust, Matt Burn, Enfield URCs, Martin Russo, Marilyn Hamilton, Laura Davenport, Mick Wood, Helen Osman, Ranvir Mallick, Enfield Over 50s Forum, Francis Sealey, Caroline Banks, Bill Linton, Joe Hickey, Irene Richards, William Yates, Petr Mitterbach, Gianni Sarra, Tracy Hughes, Kristiana Heapy, Neil Bachelor, John Crowther, Hannah Salvidge, Adrian Day, Sean Wilkinson, Janice Nunn, Julia Daniel, Deborah Dagleish, Philip Foxe, Phil H, Matthew Eade, Dána Roberts, A Cleary, Stephen Evans, Julian Rhys-Williams, Steve King, Robert Pite, Lauri Clarke, Anne Cullen, Ross Cunningham, Diana Goforth, Brendan O'Brien, Kirsten Lowe, Seton During, Aurora Yaacov, Sylvia Collicott, Paula Lamont, Liz Wright, Elsie Rigden, Sangeeta Waldron, David Mickleburgh, John Machin, The Enfield Society, Joe Studman, Ryan Hebbs, Adam White, Sue Grayson Ford, Malcolm Stow, Matt McLaren, Bush Hill Park Residents Association, Zoe White, Carol Fisk.

## Member organisations



To become an organisational member email:  
[klaudia@socialspider.com](mailto:klaudia@socialspider.com)