

# ENFIELD DISPATCH

Nº.43 THE BOROUGH'S FREE COMMUNITY NEWSPAPER

APRIL 2022

## COMMENT

How to boost Enfield's low recycling rate

P. 6

## LOCAL ELECTION

Read a preview of the upcoming council election and interviews with four local party leaders

P. 7-10

## SPORT

Enfield Town on course for play-offs

P. 15



A PAIR OF EURASIAN beavers were last month released in a secluded area of Forty Hall Farm, becoming the first to be reintroduced in London since the species was hunted to extinction four centuries ago – read the full story on Page 4 Credit Natalie Gee/Enfield Council

## Tube station car park decisions overturned

BY JAMES CRACKNELL & SIMON ALLIN,  
LOCAL DEMOCRACY REPORTER

A government planning inspector has overturned a council decision to reject plans for new housing on a tube station car park – three weeks after a government minister blocked a council decision to approve housing on a different tube station car park.

In an appeal verdict issued at the end of March, Transport for London and its development partner Connected Living London successfully overturned Enfield Council's previous decision to reject plans to build 162 homes adjacent to Arnos Grove Station, following evidence heard at a public inquiry held at the start of month.

The council did not defend its original decision because of recent changes to planning policy in London and the extra

pressure it has been put under to meet its housing targets. Residents' groups had still hoped to persuade the inspector, however, that the loss of 292 station car parking spaces would have a detrimental local impact.

The seven-storey development is set to provide 40% affordable housing, although only 9% will be three-bedroom 'family-sized' units.

In his verdict report, planning inspector David Prentis said the area was "well served by public transport" and that by prioritising pedestrians and cyclists the scheme would accord with policies designed to "reduce the dominance of vehicles on London's streets" and improve access to underground stations. Addressing accessibility concerns, he said there would be "no disadvantage" for Blue Badge holders. Eleven disabled parking spaces are included in the plans.

The Arnos Grove verdict came shortly after a government minister

made an extraordinary intervention to block a similar plan for new housing on the car parks at Cockfosters Station, three stops further along the Piccadilly Line.

Transport secretary Grant Shapps moved to prevent 351 homes being built at Cockfosters – in plans approved by the council in January – using a little-known legal power over land disposal which TfL claimed had never before been used.

Shapps said he wished to preserve the station's 370 parking spaces, used as a park-and-ride facility by commuters, most of whom drive from surrounding areas outside London. The decision was made public in a letter to Chipping Barnet MP Theresa Villiers, who holds one of the Conservative Party's most marginal seats – turn to Page 14 for the full story.

The decision by Shapps comes as Enfield Council remains under pressure from government to approve more new housing schemes. It was

confirmed last month that the council remained under a "presumption in favour of sustainable development" order imposed by Whitehall's housing department, after Enfield's failure to hit construction targets. Although there was a big improvement in housing delivery in 2020/21, when 853 new homes were built, the council's annual housing target – set using a government formula to calculate local housing need – has now risen from 798 to 1,246.

One of the Labour-run council's solutions to the housing crisis is to de-designate parts of the borough's Green Belt, allocating more than 6,000 homes there. But this has become a key local election issue, with the Conservatives and other opposition parties in Enfield campaigning to preserve the Green Belt. A series of interviews with local party leaders can be read as part of the *Dispatch's* special local election preview starting on Page 7.



  
enfielddispatch.co.uk

  
enfielddispatch@socialspider.com

  
@EnfieldDispatch

  
@EnfieldDispatch

  
/EnfieldDispatch



The Dispatch is supported by Chamberlains Estates – turn to page 3



# ED.

**Nº43**  
**APR 2022**

Enfield Dispatch is the borough's free community newspaper. We publish monthly and distribute 15,000 free copies of each issue

**Publisher**  
David Floyd

**Editor**  
James Cracknell

**Designer**  
Jonathan Duncan

**Head of Advertising**  
Klaudia Kiss

**Local Democracy Reporter**  
Simon Allin

**Engagement Manager**  
Penny Dampier

**Contributors**  
Kristiana Heapy, Aurora Yaacov, Basil Clarke, Angela O'Connell, Andrew Warshaw

## CONTACT

Call 020 8367 2975

Email [EnfieldDispatch@socialspider.com](mailto:EnfieldDispatch@socialspider.com)

Post Nicholas House, River Front, Enfield EN1 3TF

## ADVERTISING

Call 07732 000 430

Email [klaudia@socialspider.com](mailto:klaudia@socialspider.com)

**For licensing enquiries:**  
Email [maia@socialspider.com](mailto:maia@socialspider.com)



# Half of Meridian Water homes 'won't be built before 2039'

BY SIMON ALLIN,  
LOCAL DEMOCRACY REPORTER

Only 5,000 homes are likely to be built at Meridian Water over the next 17 years, according to Enfield Council planning chiefs.

The council does not expect to deliver the remaining half of its 10,000 homes target at the Edmonton regeneration site until after 2039 because the mayor of London is unlikely to release the strategic industrial land (SIL) needed for the development in the near future.

Meridian Water is a £6billion regeneration project seen as pivotal to Enfield meeting its housing targets. But the council's draft Local Plan, which sets out proposals to build 25,000 homes in the borough up to 2039, only included capacity for 5,000 homes at Meridian Water when it was published last year.

Green Party councillor Charith Gunawardena questioned council officers on the figures during a meeting of the authority's regeneration and economic development scrutiny panel last month. Vincent Lacovara, the council's head of planning, replied: "The draft Local Plan sets out 5,000 homes up to 2039, and it proposes retaining the strategic industrial land on the east bank of Meridian Water up to 2039. The further 5,000 homes [...] would be after

2039. That is a longer-term vision for the totality of Meridian Water."

The further 5,000 would be "contingent on the SIL at a future time being either partly or in whole de-designated," he added.

Vincent continued: "What we are not proposing through the draft plan that was consulted on last year is any de-designation of SIL. This is because the London Plan is very clear around protecting strategic industrial land, and we did not see that we would be able to convince the mayor that it was the right thing to do to de-designate SIL within this plan."

He added that the council was also setting out a plan to meet employment needs, which required the creation of new SIL.

Cllr Gunawardena claimed the publicity for Meridian Water stated that the homes "will be built in 20 years" and was

"causing a lot of confusion". He added that the 5,000 figure in the draft Local Plan was "inconsistent with the message going out".

Sarah Cary, the council's executive director of place, said there was "no inconsistency", as officers had described Meridian Water as a "long-term project" and the council's financial modelling "looks beyond the plan period".

The council is currently analysing around 7,000 responses to a consultation on the draft Local Plan, which has also run into controversy over proposals to build more than 6,000 homes on sites currently designated as Green Belt.

The next iteration of the draft Local Plan is due to be published during the summer, before being submitted to the planning inspectorate for an examination in public. It is set to be officially adopted by the council in 2024.

Construction of Meridian One, the first of the Meridian Water development sites, started last year



# Focus on Edmonton Green

An Edmonton Green councillor seeking re-election in May has said the need for more affordable housing is his top priority for the ward.

The Dispatch spoke to Ergin Erbil ahead of the local election to ask what his focus was for Edmonton Green as part of an ongoing project funded by the Public Interest News Foundation (PINF), which seeks to boost democratic engagement in specific communities.

Cllr Erbil, the only current Labour councillor for Edmonton Green standing for re-election in the ward, said housing issues were the most common to be raised on the doorstep. "People are concerned about affordable housing and the fact the private

sector is impossible to access for some people," he said. "It is becoming more and more unlikely for young people to get on the housing ladder.

"There are also issues with [council] tenants needing repairs and reporting anti-social behaviour. We have made some improvements but there is a lot more work to do."

Cllr Erbil said another priority was reducing street litter. "We [the council] have been working hard to tackle this. We have invested £500,000 [per year] into street cleaning but these are big issues that won't just be tackled by throwing money at it – we need a multi-agency approach."

Teleshia Reid and Oktay Cinpolat are both standing in Edmonton

Green as independent candidates, on a unified platform, saying they feel "failed" by the Labour administration. Their key issues are opposing the new incinerator, reducing the number of people living in temporary accommodation, providing jobs and opportunities for young people and cleaning Edmonton's "dirty" streets.

The Dispatch also attempted to approach Conservative, Liberal Democrat and Green candidates for Edmonton Green. A full list of candidates will be made publicly available on Wednesday, 6th April and all will be invited to attend an event at Community House in Fore Street on Thursday, 14th April, starting 6pm – with voters welcome to come along for a chance to quiz their election candidates.

# Fore Street killer jailed

A man who murdered one woman and came within a "hair's breadth" of killing another has been sentenced to life in prison.

Brian Sengendo, aged 27 from Enfield Wash, will spend at least 42 years of his life in jail after being sentenced at the Old Bailey last month.

Sengendo was previously found guilty of carrying out a four-hour campaign of sexual assault and violence which culminated in the murder of 44-year-old Therasia Gordon, a sex worker from Edmonton, on 4th August 2020.

Earlier the same evening he had kidnapped two other sex workers, one of whom he raped and stabbed seven times, narrowly avoiding catastrophic injury. Both women managed to escape by jumping out of his van as it was moving.

The judge said Sengendo was a proven liar and manipulator who had been motivated by a perverted sexual desire. He also commended the "outstanding teamwork" of uniformed officers and detectives, who led a "highly skilled" investigation.

# A&E waits

One third of accident and emergency (A&E) patients had to wait longer than four hours to be treated at North Middlesex University Hospital in February – well below the national target.

NHS figures show that in February only around two-thirds (66.8%) of A&E patients at North Mid were discharged, admitted or transferred within four hours of arrival – significantly below the national 95% target, as well as the England average of 73.3%.

Dr Nnenna Osuji, chief executive of North Mid, put the long waits down to "unrelenting demand".

# Ikea closing

Ikea has announced the closure of its Edmonton shop – citing Meridian Water as part of the reason.

In a statement, Ikea bosses said a sharp rise in online sales prompted a reassessment of its property portfolio in London and that this "combined with the redevelopment of the area where the store is located" led to the closure decision.

The shop employs 450 people and first opened in 2005. A closure date is not yet confirmed.



# CHAMBERLAINS

## E S T A T E S

Free professional video tours for all new Sales & Lettings instructions



SOLE AGENTS

TOP FLOOR ONE BEDROOM RETIREMENT FLAT – EPC C  
Oakdene House, Bycullah Road, Enfield EN2  
£175,000 Leasehold



SOLE AGENTS

MODERN PURPOSE BUILT FIRST FLOOR APARTMENT – EPC C  
Mallory Court, 58A Valley Fields Crescent, Enfield EN2  
£280,000 Leasehold



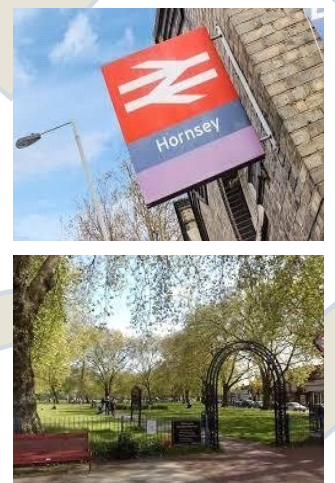
SOLE AGENTS

CHAIN FREE, FULLY MODERNISED TWO BEDROOM FLAT – EPC E  
SkeTTY Road, Enfield EN1  
£315,000 Leasehold



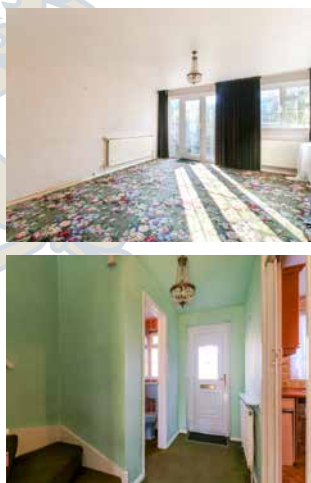
SOLE AGENTS

ONE BEDROOM FIRST FLOOR FLAT CONVERSION ON THE LADDER – EPC C  
Hampden Road, Harringay N8  
£375,000 Share of Freehold



SOLE AGENTS

AN ATTRACTIVE THREE BEDROOM END OF TERRACE HOUSE – EPC D  
Capstan Ride, Off Crofton Way, Enfield EN2  
Price Guide £600,000 Freehold



SOLE AGENTS

BRAND NEW THREE BEDROOM FAMILY HOME – EPC B  
Chasewood Avenue, Enfield EN2  
£735,000 Freehold





The first beaver gets ready to leave his cage Credit Natalie Gee/Enfield Council



## Beavers released in Enfield

BY JAMES CRACKNELL

A pair of Eurasian beavers have been released at Forty Hall Farm – the first introduced to London since the species became extinct in Britain in the 16th Century.

The male and female were set free inside a six-hectare woodland enclosure specially created for them, along a tributary of Turkey Brook. The male was transported from Yorkshire while the female came from Scotland.

A Twitter poll run by Enfield Council later decided that the pair would be named ‘Justin Beaver’ and ‘Sigourney Beaver’. It is hoped Justin and Sigourney will mate and produce beaver kits.

Beavers have been making a comeback in the UK over the last decade, with a population of several hundred now roaming Scotland’s rivers and streams, with smaller groups dotted around England and Wales. The idea of introducing them within London was conceived a couple of years ago, with Enfield leading the way as a location thanks to the borough’s extensive Green Belt land.

The beaver reintroduction project is a collaboration between Enfield Council and Capel Manor College, which runs Forty Hall Farm, with the help of experts at Beaver Trust. Before it could

go ahead, a licence was granted by the government.

After the beavers had been successfully released at the enclosure at Forty Hall Farm, Beaver Trust’s restoration manager Roisin Campbell-Palmer told the *Dispatch*: “These are two very healthy animals and there is no reason why they won’t do very well here.

“From a flood mitigation and biodiversity point of view, they will really benefit this area.”

Beavers are well regarded by wildlife conservationists for their pivotal role in habitat restoration. By damming streams they slow down the flow and create new freshwater habitats where invertebrates and amphibians can thrive, while simultaneously reducing flood risk downstream.

Explaining the choice of location, Roisin said: “It is a complex, mature woodland with water running through it and that is ideal.

“As long as there is enough water, they can make their dam structures and it creates these large ponds. When we come back to this area in two years’ time it will be much wetter, the tree canopy will be opened up, and we will get more amphibians and invertebrates and more species will be thriving.”

Although they are nocturnal creatures, Roisin said the beavers can sometimes be seen on summer nights at dusk, usually

splashing around in their ponds. No-one will be permitted to enter their enclosure, however there will be cameras set up that people can watch online.

Forty Hall Farm manager Angelika Hauses described the release of the two beavers as “magical” and added: “I found it quite beautiful to see them, the way they swim so gracefully.

“This woodland has been fairly empty [of wildlife] but now the beavers are going to use this wood to build a home and they will attract other creatures here as well.”

Council leader Nesil Caliskan hopes the beavers will become a tourist attraction for nature lovers in the city. She said: “We know already from the reaction we have had that people will travel to Forty Hall to see these beavers. Forty Hall has always been an asset for the borough and we feel lucky to have these spaces.”

Capel Manor College will now be involved in monitoring the progress of the beavers. Principal Malcolm Goodwin said: “We know how vital nature and biodiversity is for the health of the countryside and the wellbeing of the good people of Enfield. Our students know this too and they will have the opportunity to protect, monitor and understand the beavers and how they interact with their habitat and the local ecosystems.”

## Woodland volunteers finish planting 100,000 trees

BY JAMES CRACKNELL

The final tree of a new Enfield woodland has been planted – thanks to the efforts of around 600 volunteers.

Over two seasons, 100,000 trees have been planted on 60 hectares of former farmland in an area that was once a royal hunting ground.

Enfield Chase Restoration Project was launched in autumn 2020 as a joint venture between Enfield Council, which owns the land, and environmental charity Thames 21, which has been running the volunteering programme.

Nik Cain, a woodland creation officer for Thames 21, has been in charge of organising the project. After the final tree was planted on 5th March, Nik told the *Dispatch*: “There is a huge sense of achievement. When we started, there were these massive empty fields, but thanks to our volunteers we have gradually seen it chipped away.”

The woodland now stretches from Trent Park in the west, along the route of the London Loop towards Hilly Fields in Clay Hill. It encompasses the valleys of both the Salmons and Turkey brooks, helping to alleviate flood risk further downstream in Edmonton, where the two streams merge with the River Lea.

As well planting trees, the project has seen new footpaths laid to make the London Loop more accessible and open up the land to the public.

In the first winter planting season Thames 21 had to contend with a pandemic lockdown which forced the charity to cancel most volunteering sessions and instead use staff to plant trees and stay on schedule.

Nik said: “It was severely disrupted

by Covid, we only did nine volunteering events before Christmas [2020] before it fell apart.

“Being an outdoors thing, we felt it was relatively safe, so it caught us by surprise.”

Thames 21 staff who had been recruited to help run the volunteering sessions instead found themselves wielding spades and working long hours to help keep the project on track. The second season, starting in November 2021, was different – with far more volunteers able to join in.

“It was nice that we had people who became regular volunteers, because you get to know people. It is a good feeling to see them enjoying planting trees, and there is a social part to it as well.

“We’ve also had about ten days dedicated to primary schools – the kids absolutely loved it.”

Many of the volunteers involved with the project have been local people, with a new community group called Friends of Enfield Chase being formed by residents who wish to continue their involvement with the new woodland.

Although all of the trees are now planted, weekly maintenance sessions will continue through the spring and summer, on Wednesdays, to ensure the fledgling woodland is well looked after. Nik said he was keen for Thames 21 to stay involved and continue its work with Enfield Council, helping to further rewild the borough with other tree planting and river management projects. “The aspiration is to carry on,” said Nik.

Future work could see the route of the London Loop diverted underneath Rendelsham Viaduct, a railway bridge that has been cut off from the public for decades.



Volunteers planted the final trees of the new woodland on 5th March





# ENFIELD COMMUNITY HEROES

Sponsored by Edmonton Green Shopping Centre

## Making theatre accessible to all

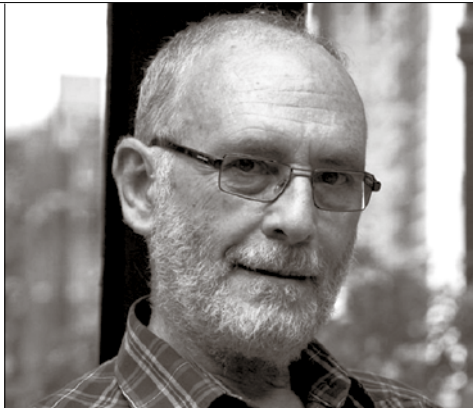
*Andrew Bradford has been pivotal in the success of Face Front Inclusive Theatre*

Enfield is blessed with a plethora of great theatre and drama organisations, with many being well known for their work promoting diversity and inclusion.

Face Front Inclusive Theatre is one such group, having been launched in 1999 to help create accessible theatre with both disabled and non-disabled actors.

Andrew Bradford has been involved with the Edmonton charity since 2008 and has been instrumental in its growth. When he recently stepped down from Face Front's board of trustees, chair Roger Cowe said Andrew had "played an enormous part in Face Front's success over the past 13 years".

Andrew was born and raised in Edmonton by disabled parents Charlie and Kathy Bradford. He first came to know Face Front after winning a creative writing competition organised by Millfield Theatre. His short story,



Andrew Bradford stepped down from Face Front's board of trustees in November after 13 years of involvement with the Edmonton charity

based on memories of his childhood and his parents, was developed for performance with Face Front to form part of Millfield's stage production *Tales of Edmonton* in 2008.

This was the start of a lasting connection between Andrew and Face Front Inclusive Theatre, where he proved a

popular and supportive volunteer with Broken Silence, a drama group for disabled adults and those with mental health issues.

The current board of trustees nominated Andrew as an 'Enfield Community Hero' and said when he served as chair of Face Front he was "100% committed and always available to help and advise" and was "truly passionate about promoting talented disabled artists and providing access to the arts for all". Andrew also generously shared his time and expertise in accountancy and IT, which was of "immeasurable value" in setting up Face Front's financial reporting systems.

In 2017, Andrew stepped down as chair, but remained as a trustee until November 2021. He continued to champion the charity's work both within the local community and nationally, including with a sponsored walk of the Pennine Way which raised funds

to help pay for a new accessible door at Face Front Studio in Edmonton Green – named 'The Bradford Door' in his honour.

Reflecting on his involvement with Face Front, Andrew said: "Our work gives a voice to some of the most disadvantaged people in society, originally in just our locality, but increasingly London-wide [...] being part of Face Front has enriched my life and I thank you all."

For more information about Face Front Inclusive Theatre:  
Visit [facefront.org](http://facefront.org)

### Nominate your heroes

Dispatch readers are welcome to nominate their own 'Enfield Community Hero' – someone who you think has gone above and beyond to help support the local community. Simply email your nomination to [EnfieldDispatch@socialspider.com](mailto:EnfieldDispatch@socialspider.com)

Advertisement



# APPLY NOW

**GOOD IN ALL ASPECTS  
OFSTED, NOVEMBER 2021**

*"Students benefit from studying in an environment in which they feel confident to work hard and be themselves."*

visit [www.sgmc.ac.uk](http://www.sgmc.ac.uk)

0208 523 3544

[info@sgmc.ac.uk](mailto:info@sgmc.ac.uk)

[/monouxcollege](https://www.linkedin.com/company/monouxcollege)

[/monouxcollege](https://www.facebook.com/monouxcollege)

[@monouxcollege](https://www.instagram.com/monouxcollege)

[@monouxcollege](https://www.youtube.com/channel/UCmonouxcollege)

[@monouxcollege](https://www.tiktok.com/@monouxcollege)

[@monouxcollege](https://www.twitter.com/monouxcollege)



Albany Park in Enfield Wash



# Demanding better for Enfield's parks

Kristiana Heapy, chair of Friends of Tottenham Rec, introduces a manifesto for Enfield's parks

One of the things I love most about living in Enfield is its abundance of green space. We have wonderful large heritage parks such as Forty Hall and Trent Park, alongside smaller but equally valuable urban green spaces which provide residents with playgrounds, playing fields and community gardens.

Many of Enfield's parks and green spaces are represented and championed through 'friends' groups which are made up of residents who volunteer their time to protect and invest in their local space. But many of these groups are concerned that priority is not being given to investing in the parks that have been havens for tens of thousands of us over the last two difficult years.

So, for the first time, community groups across the borough have come together to produce a manifesto for improving all of Enfield's green spaces, called *Love Our Parks*. We are asking all prospective election candidates from all political parties to commit to helping us try to make the manifesto a reality if they are elected in May.

The manifesto has four simple asks; greater accessibility, efficient maintenance and waste management, supporting efforts to protect native plants and wildlife, and increasing

community space.

We recognise that this may sound hard in the light of funding cuts over the last decade, but this is why we are asking Enfield Council to work with community groups in a strategic way to generate a bigger impact. Encouraging and supporting civic participation in community life should be at the core of the council's work.

Parks can become the hubs needed to create healthy, happy, thriving communities. For example, simply supporting voluntary groups through activities such as tree planting can bring isolated people together, thereby reducing loneliness, which is a big contributor to poor mental health outcomes. We also know that access to nature and green space improves people's wellbeing, but some of the borough's parks are inaccessible for people using mobility aids such as wheelchairs.

This manifesto is not about asking councillors to do more to us, but is asking councillors to do more with us. There was a lack of meaningful engagement with community groups in the development of the council's recent strategy for 'blue and green' spaces, but the election is an opportunity for councillors standing from all parties to commit to co-production with community groups if they are

elected or re-elected.

Local council elections don't often see the biggest turnouts; in 2018 fewer than two in five Londoners voted. However, council elections are hugely important as they are our chance to vote for the kind of neighbourhood we want to live in.

When lists of prospective candidates are published we will do our best to write to all candidates to invite them to commit to the manifesto. If you agree with our aims, please do ask those who knock on your door asking for your vote if they will commit to the *Love Our Parks* manifesto. We will be publishing the names of all those candidates who agree to the manifesto on the Enfield Climate Action Forum website.

The following community groups support the manifesto's call to action: Friends of Aldersbrook Park; Friends of Bush Hill Park; Friends of Conway Park; Friends of Firs Farm; Friends of Pymmes Park; Friends of Tottenham Recreation Ground and Boundary Playing Fields; Voice of Jubilee Park; Friends of Broomfield Park; Town Park Enfield; Friends of Bury Lodge; Friends of Hazelwood Recreation; Friends of Hilly Fields; Bountago Big Local.

To find out more about the 'Love Our Parks' campaign:

Email [LoveEnfieldsParks@gmail.com](mailto:LoveEnfieldsParks@gmail.com)  
Visit [encaf.org/parks](http://encaf.org/parks) [encaf.org/parks](http://encaf.org/parks)

## We must do more to boost recycling

Aurora Yaacov from the North London Zero Waste campaign on what steps are needed to improve Enfield's low recycling rate

A shocking 40% of paper, card, glass and plastics collected for recycling in Enfield was sent for incineration last year, up from only 5% two years before.

These figures were revealed by Enfield Council's recycling team at an environment and climate action scrutiny panel in February. They explained that much more recycling was being rejected because of contamination with items like nappies, clothing, plastic bags and food waste being placed in recycling bins.

But how could contamination have increased by so much, so quickly? It is no coincidence that these massive increases in rejected recycling started in March 2020, when fortnightly collections were introduced, and when many people were obliged to work from home because of the Covid-19 pandemic.

To address the situation, the council intends to issue warnings and fine residents who contaminate bins; these are punitive measures which suggest that the council sees the individual behaviour of residents as the problem, instead of recognising that council services and communications are in need of fixing.

Could it be that a lack of recycling facilities leads people to contaminate? Our borough has only ten clothing banks for its 340,000 residents, versus 70 in neighbouring Waltham Forest. Residents have to pay for garden waste collections and are not given free food waste bin liners on a regular basis. Residents in flats don't receive a low-cost recycling box to collect their recyclables, like they do in Islington. Instead, they have to use a plastic bag, often a black one, which is then flagged as contamination. Shared food waste bins are not pedal operated.

Could it be that Enfield Council's guidance on recycling is incomplete, ambiguous and even contradictory? The latest brochure that came through our doors suggested that only plastic bottles are recyclable, while the website says that plastic pots, tubs and trays are also accepted. Information

inside our blue-lid recycling bins is again different, and the bins themselves are not in distinct full colours.

Could it be that not enough effort is being made to reach Enfield's diverse communities? Not only in English but in other languages? From our own conversations we learnt that residents not well versed in English do not receive communications in Turkish, Bulgarian, Somali, Polish or Romanian, which are the most widely spoken languages in Enfield after English.

Could it be that residents are not informed of the many benefits of recycling, including more local jobs, lower council tax and less toxic pollution from the Edmonton incinerator? Using the median cost for incineration we have estimated a cost of £650,000 per year for Enfield Council to incinerate its 7,000 tonnes of rejected recycling. This is on top of the £6.4million per year that we already pay to incinerate our waste. Unless something is done, this will grow to £11million in five years, to pay off the new costly

£755m Edmonton incinerator.

It is clear that what needs fixing is the council's approach.

We, as a community of resident volunteers, are ready to support the council to make it happen. To start with, our group has delivered a survey to give residents a voice, consult them about ideas to supercharge recycling, and give their thoughts about incineration.

Readers can be part of the change by filling in our online survey. The results will be available to residents and sent to the council before the May election. But we will not stop there; we will keep putting new ideas on the political map. Some measures will require investment, but on balance the council's finances will actually improve. The market value of recycled waste is increasing, while incineration simply burns a valuable resource.

Enfield Council can and must do better. We will demand this in the local elections this May.

Find out more and fill in the local recycling survey:

Visit [letstalkrubbish.london](http://letstalkrubbish.london)

***"Enfield Council can and must do better"***





## Let the battle for control of Enfield Civic Centre commence

*Labour seeks another four-year term but the Conservatives fancy their chances*

BY JAMES CRACKNELL

**O**n Thursday, 5th May, voters in Enfield will head to the polls to elect councillors to represent them at Enfield Civic Centre over the next four years.

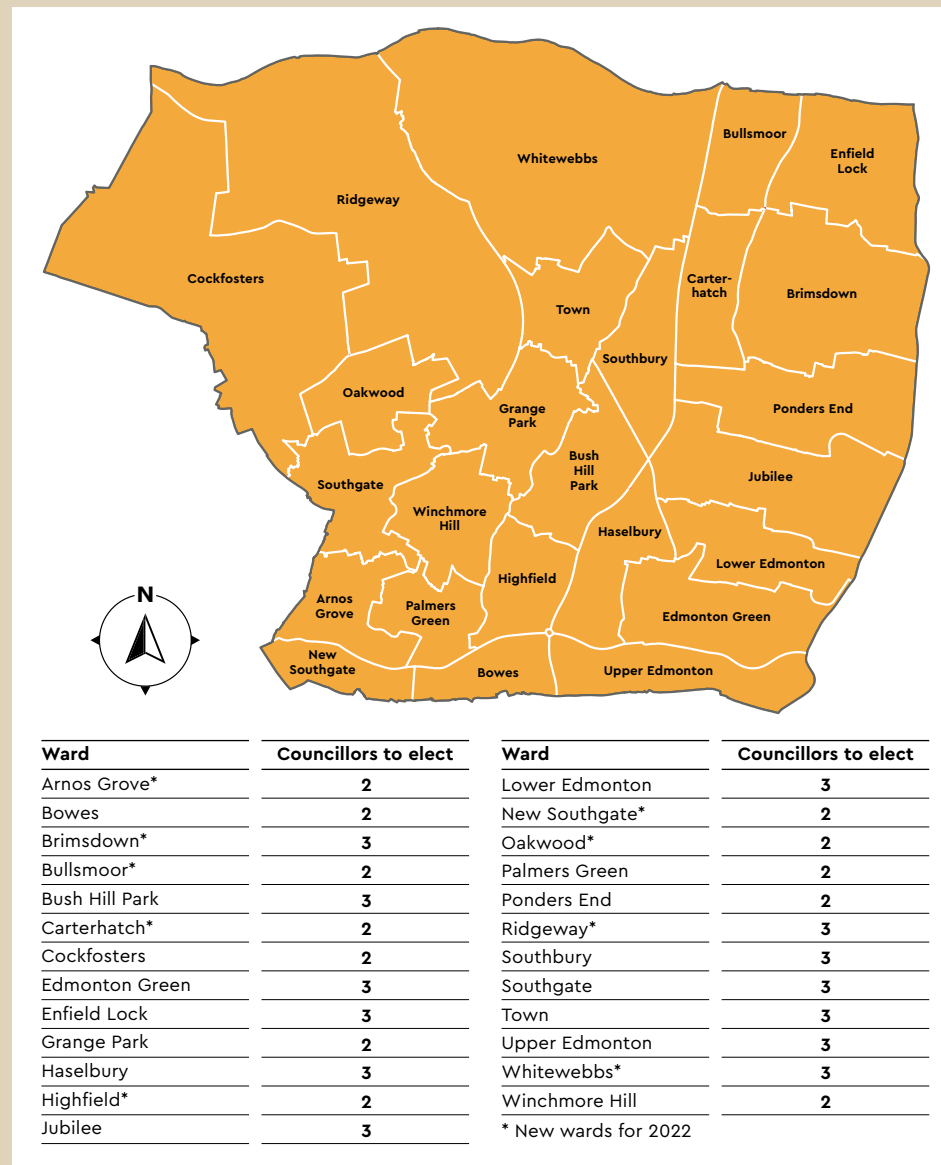
For several reasons, this local election is the most fascinating to have taken place in the borough for many years.

Since taking over control of Enfield Council in 2010 – at a time when voters nationally were moving towards the Conservatives – the Labour Party has increased its majority at every local election. But the last four years have seen significant upheaval, with a shock change of council leader immediately after Labour's biggest-ever win in 2018, followed by a number of defections from disaffected Labour councillors who felt they could no longer work under the new leadership.

Following the 2018 election in Enfield, when Labour won 46 seats and the Conservatives 17, Labour's grip on the council has weakened significantly, with two of the party's councillors quitting the civic centre and seven others resigning their Labour membership in protest at the way the council was being run. Two became Green Party councillors, one left for the Liberal Democrats, and four became independents. Another councillor, although still a Labour member, has also left the Enfield Labour group.

Although they headed in different directions politically, all seven of the Labour defectors have been grouped under the 'Community First' banner, to enable them to take positions on various council committees and other functions. The *Dispatch* understands that the four independents will not be standing for re-election in May, but the two Greens and one Lib Dem currently on the council will be standing.

On top of the internal political divisions within the Enfield Labour group, a number of divisive policies have helped opposition parties gain support. Major local controversies have included the move from weekly to fortnightly bin collections, the decision to allocate more than 6,000 new homes for construction on parts of the borough's Green Belt, the closure of Whitewebbs Park Golf Course, and the imposition of low-traffic neighbourhoods (LTNs) in Palmers Green and Bowes Park. There has also been ongoing criticism over the way the council has handled Meridian Water, which is one



of the largest ongoing redevelopment schemes in London but which has yet to see a single new home built (construction did finally get underway last year).

Off the back of these controversies, as well as strong polling nationally amid the rapid Covid-19 vaccination rollout, the Conservatives produced some impressive results in a series of local by-elections last year. They won a seat in Chase ward off Labour and saw their vote share increase in three other wards. Most notably, in the London mayoral election held in May 2021, Enfield was the only borough to back Conservative candidate Shaun Bailey having previously supported Labour's Sadiq Khan in 2016.

The net effect has been to reduce Labour's majority at Enfield Civic Centre from 29 in 2018 – its highest ever – to eleven now.

But while the Conservatives may have begun to feel confident that they could win back control of the council, a series of escalating

Westminster controversies over the last six months has seen Labour leapfrog the Tories in national polling. It now seems less likely that Labour voters would consider switching their allegiance, especially with local Conservative councillors unwilling to drop their support for an unpopular prime minister.

One other significant factor affecting this year's election is the redrawing of ward boundaries. While the overall number of councillors in Enfield will remain the same, at 63, the number of wards has been increased from 21 to 25, with some only now electing two councillors rather than three. Newly created wards include Arnos Grove, Carterhatch, New Southgate and Ridgeway, but all wards in the borough have seen their boundaries moved to some greater or lesser extent. It remains difficult to predict which parties these changes may benefit, if any at all.

At time of going to press, the full list of

candidates standing across all 25 wards was unavailable – it is due to be made public on 6th April via the Enfield Council website.

Typically, Labour and the Conservatives would have their candidates selected months in advance, but the *Dispatch* understands there have been significant delays with the Labour selection process in particular this year, including problems finding candidates to stand in every ward. One factor is that a number of senior Labour councillors are not seeking re-election – most notably the deputy leader Ian Barnes, who has spearheaded the council's two recent LTN trials. Others not standing include Mary Maguire, the cabinet member for finance, Katherine Chibah, an associate cabinet member, plus Tolga Aramaz and Achilleas Georgiou, who have both been deselected. New recruits for Labour include Whitewebbs candidate Nishan Dzhingozyan, a prominent social justice campaigner with strong links to the borough's large Bulgarian community.

On the Conservative side, Terry Neville is among the notable departures, having served as a councillor in Enfield since 1986. New recruits include a couple of candidates who have made names for themselves via social media in recent years, with prominent anti-LTN campaigner Ediz Mevlit standing in Bowes ward and Hannah Dyson, a former administrator of the popular Enfield Voices Facebook group, standing for the Tories in Whitewebbs.

Labour's strongholds are in the east of Enfield borough, while support for the Conservatives is stronger in the west. Crucial 'swing' wards include Southgate, Winchmore Hill, Palmers Green, Bowes, Arnos Grove and New Southgate but, even if the Tories were to win all of these, they would still need to gain at least one seat in an eastern ward such as Carterhatch or Southbury to win overall control.

Interviews with each of the leaders of the Labour, Conservative, Green and Liberal Democrat groups in Enfield follow on the next three pages. More local election coverage will be available on the *Dispatch* website at [enfielddispatch.co.uk](http://enfielddispatch.co.uk) over the next few weeks.

**The deadline to register to vote in the local election is 14th April, just before midnight. Eligible voters can register online:**

Visit [gov.uk/register-to-vote](http://gov.uk/register-to-vote)

**For more information about the election on 5th May, including where to find your nearest polling station and which ward you live in:**

Visit [enfield.gov.uk/services/councillors-and-democracy](http://enfield.gov.uk/services/councillors-and-democracy)



# Labour committed to investing in the borough

*The Labour group is looking to retain control of Enfield Council and build on its best-ever election result four years ago*

BY SIMON ALLIN,  
LOCAL DEMOCRACY REPORTER

Enfield's Labour group plans to support residents hit by the cost-of-living crisis and deliver "ambitious" investment in the borough if it retains control of the council.

Labour aims to boost skills and the local economy, while it is already helping residents with a core council tax freeze as other household bills increase.

Speaking to the Local Democracy Reporting Service ahead of the launch of the group's manifesto, council leader Nesil Caliskan criticised the Conservative government's handling of the coronavirus pandemic and the "disgrace" of the 'partygate' scandal.

She said: "At a time when we are stuck with the Conservatives nationally, we need a Labour council that is going to stand up for Enfield residents."

"I think we have demonstrated as Enfield Labour over the last couple of years, particularly with the pandemic, [that] we stepped up for Enfield residents and are there for them and their families when the Conservatives aren't. We will continue to do that, alongside some ambitious plans to deliver investment in the borough."

Cllr Caliskan said the Labour administration had frozen core council tax and would maintain its council tax support scheme, which is designed to reduce bills for those on low incomes. She added that the group was "really committed" to supporting skills and the local economy, highlighting the provision of a construction skills academy and film academy at the Meridian Water regeneration zone.

The Labour leader said her group's manifesto would also include pledges aimed at keeping Enfield safe and tackling serious youth violence following a decline in police numbers during the past few years.

Pledges for young people include maintaining the summer university programme, which offers a range of free courses and activities during the summer holidays, and supporting special educational needs provision.

To deliver a "cleaner Enfield" the group plans to maintain free bulky waste collections – after they were reintroduced last year – and speed up the rollout of CCTV



Labour councillors and candidates, including leader Nesil Caliskan (back row, fifth from left)

cameras to catch fly-tippers.

Another key pledge will be focusing on "general investment in the borough". This will include a £1 billion programme to build 3,500 more affordable homes by 2035, 40% of which are set to be family-sized units with three or more bedrooms.

The Labour leader claimed her administration had "gone beyond" pledges in the 2018 manifesto, and a promise to "keep council tax as low as possible" had been kept despite rises in previous years.

Cllr Caliskan said: "We kept it as low as possible with our objective of making sure council finances

were robust, that we were financially sound [...] and also, we did it on the back of Covid and the government not fully funding us as a local authority – having experienced £700 million of cuts.

"Had we had better funding settlements, we would have frozen or even reduced council tax."

The 2018 manifesto also contained a pledge to "finalise a new recycling site in Edmonton". Cllr Caliskan said a recycling centre was soon set to open at Edmonton EcoPark, and Labour would also look for additional facilities in the borough.

Opposition councillors have frequently

accused the Labour administration of "not listening" to residents on key issues such as the move to fortnightly waste collections and the introduction of two new low-traffic neighbourhoods (LTNs). Following a consultation on waste collection changes, the council chose the option least favoured by residents. In addition, the two LTNs were made permanent despite majorities of respondents to public consultations saying

the schemes had a negative impact on them.

In response, Cllr Caliskan said her administration did listen to residents and was responding to their concerns over the need for afford-

able homes, the cost of living crisis, crime and other issues. The Labour group leader described traffic schemes as "difficult to implement" and said they had to be adapted to the local area. She added: "We have to follow process and the law, which means you try something out, and then you do the consultation, and you allow people the time to provide that feedback."

In response to the feedback, Cllr Caliskan said the council was introducing exemptions for blue badge holders and carers, replacing bollards with cameras to improve access for the emergency services, and was proposing to reopen one of the

roads in the Fox Lane LTN.

In the years since Cllr Caliskan took over leadership of the council shortly following the 2018 election, a number of councillors have quit the Labour group to serve as independents, or have joined other parties, with some subsequently claiming there was a democratic deficit within the Labour group and that differences of opinion were suppressed.

Cllr Caliskan said the borough had a large Labour group and that the party was "built on people debating" and "having different views". She added: "Political parties are entities where people debate and they work things out, but ultimately we have collective responsibility, and we vote on things as a Labour group and we adhere to that collective responsibility."

The leader said Labour group meetings had become more frequent under her administration, adding "we have more engagement in our Labour group than we have ever done".

The council's draft Local Plan, published last year, has caused controversy over proposals to allow more than 6,000 homes to be built on Green Belt sites. At the same time, only half of the 10,000-home target planned for Meridian Water was included in the Local Plan, which covers the period up to 2039, because City Hall was said to be unlikely to permit the extra 5,000 homes on industrial land in the near future.

Despite this, Cllr Caliskan said Meridian Water was a 20-year plan that was "updated every single year", adding "we have to renegotiate with the mayor of London to release that strategic industrial land, and that is the right and proper thing to do."

She denied the Green Belt proposals were designed to make up for a shortfall at Meridian Water and claimed building on brownfield sites and small sites would not be enough to meet the borough's housing target.

Cllr Caliskan added: "People don't want skyscrapers. If you don't want skyscrapers, then you have got to look to build lower-density, family-sized homes with equitable space. So the choice is skyscrapers or nice homes in green space near train stations."

For more information about Labour's plans for Enfield:  
Visit [facebook.com/LabourInEnfield](https://facebook.com/LabourInEnfield)





# Conservatives want to create a 'listening council'

*The Tories are aiming to win back control of the civic centre for the first time since 2010*

BY SIMON ALLIN,  
LOCAL DEMOCRACY REPORTER

Enfield's Conservative group says its policies will make the borough cleaner, greener and safer if it wins control of the council in May.

The local Tories want to create a "listening council" and reverse policies they claim do not have the majority support of the public, including low-traffic neighbourhoods (LTNs), plans to build on the Green Belt and fortnightly bin collections.

Instead, the Conservatives plan to focus on environmental and road safety policies they believe will attract greater backing from the public, such as more 'school streets' and 20mph zones.

Speaking ahead of the local elections on 5th May, Conservative group leader Joanne Laban told the Local Democracy Reporting Service: "What we want to do is be a listening council. We want to mend the relationship between the community and the council, which we believe needs improving."

A key cornerstone of the Tory campaign is a pledge to protect the borough's Green Belt from development. Last year, Enfield Council published its latest draft Local Plan, which proposes building more than 6,000 homes on Green Belt sites in the north-west of the borough.

"People choose to live in Enfield because of the rich mix of town and countryside that we have," Cllr Laban said. "We are very lucky to be around 35 minutes into central London and still have parks and open spaces that we can enjoy. We saw how much of an asset they were during lockdown, when people used them to walk and exercise every day."

Last year, the government curbed the council's planning powers after the authority failed to meet its housing target for three successive years. Council leader Nesil Caliskan said previously that "we have to build somewhere – if it is not out, it is up" and that "we have heard from residents and councillors that we do not want skyscrapers".

Cllr Laban said the Tories were opposed to using tall buildings, such as the 26-storey tower previously proposed



Conservative councillors and candidates outside Enfield Civic Centre, including group leader Joanne Laban (fourth from left)

for the centre of Enfield Town, to meet housing targets. Instead she said the Conservatives would "accelerate" the delivery of homes at Meridian Water, lobby to build more housing on former industrial land and add more homes to existing council estates.

She added that the Tories believed the draft Local Plan target of building 25,000 homes across the borough over 20 years could be lowered. The group previously claimed the target "assumes a population growth well in excess of national projections". City Hall has set Enfield a target of building 1,246 homes per year going forward, a significant increase on the 853 built in 2020/21.

The Conservatives are also pledging to remove the two LTNs introduced by the council in Bowes Park and Palmers Green. Designed to stop rat-running, boost walking and cycling and improve

air quality, the LTNs – which use bollards, planters and cameras to close streets to through traffic – have faced significant opposition from some residents, with most of the people responding to the two public consultations saying the schemes had a negative impact on them.

"We feel LTNs have divided the community in both areas," Cllr Laban said. "I have never seen in my time on Enfield

***"I have never seen in my time on Enfield Council a scheme that has divided the community as much as LTNs have"***

Council a scheme that has divided the community as much as they have."

LTNs are included in the council's climate action plan as a means of cutting emissions and ensuring the borough becomes carbon neutral by 2040. But Cllr Laban said the

Conservatives would not scrap or move the target. Instead, they plan to introduce a range of other measures to make roads safer and cut emissions.

"We believe in people walking more, but as part of our road safety, we don't believe

in using the LTN model," the Conservative group leader said. "We will put [in] more school crossing patrols, 20mph zones, and we support school streets."

Cllr Laban said the Tories had no plans to remove the extensive cycle lanes that have been installed along Green Lanes and Hertford Road/Fore Street, while they do want to install more electric car charging points and find ways to boost recycling.

During a full council meeting in January, amid the 'partygate' scandal over allegations of lockdown rule-breaking gatherings in Downing Street, Conservative councillors refused to support a Labour motion calling on Prime Minister Boris Johnson to resign. At the time of this interview, with the Metropolitan Police still investigating and no date set for the publication of Sue Gray's full report into the allegations, Cllr Laban said the prime minister still had the support of the Enfield Conservative group, although she says they do not condone the gatherings that took place.

Partygate has led to a significant dip in the popularity of the Tories nationally, but Cllr Laban claims the issue is not being raised by voters on the doorstep. Meanwhile, she has praised the government's record on the Covid-19 vaccine programme and said the PM had been "excellent" in responding to the war in Ukraine.

"He is a human being," said Cllr Laban. "He's done things wrong, he's done things right – he is the prime minister, he is the leader of our party, and we support him."

On other local issues, the Tory group leader has pledged to bring back weekly bin collections, support a "total pause" and review of the new Edmonton incinerator, hire more police officers using a match-funding deal with City Hall, as well as take a "zero-tolerance approach to fly-tipping".

Cllr Laban added: "If people want a cleaner, greener, safer borough, and a council that listens to community concerns and respects the community it serves, they need to be voting Conservative in May."

For more information about the Conservatives in Enfield:  
Visit [facebook.com/EnfieldConservatives](https://facebook.com/EnfieldConservatives)





# Green Party focuses on housing crisis

BY SIMON ALLIN,  
LOCAL DEMOCRACY REPORTER

**T**he Green Party in Enfield wants to make the borough cleaner, greener, safer and healthier if it is successful in the local elections. The group plans a “big focus on housing” to ensure it meets the needs of local people and to promote transport schemes that are fair as well as environmentally friendly.

Charith Gunawardena, who represents Southgate, became the borough’s first Green councillor after quitting the Labour group last May. Anne Brown, who represents Southgate Green, also joined the Greens after leaving Labour last September.

After increasing its vote share in last year’s council by-elections, the party now intends to field candidates in every ward in Enfield.

Speaking to the Local Democracy Reporting Service, Cllr Gunawardena said the Greens wanted to stop the council placing temporary accommodation residents in housing outside Enfield, give priority to local people on new developments, and stop “demolishing affordable social rent houses and replacing them with unaffordable private housing”.

He added: “There has to be real evidence

that shows the type of housing people need in terms of affordability and everything else. We will ensure that evidence gets acted on and not ignored.”

Cllr Gunawardena said the Greens opposed building any homes on the borough’s Green Belt and planned to push for more family-sized and social housing on the council-led £6billion Meridian Water regeneration scheme in Edmonton.

## ***“Council-led projects are not addressing local housing need”***

“The council is a master developer [on Meridian Water],” Cllr Gunawardena said. “If the council-led projects are not addressing local housing need, who is going to do it?”

Enfield Council’s climate action plan sets a target for the whole borough to be carbon neutral by 2040. Cllr Gunawardena said the “aspirations” of the plan were good but claimed the objectives and baseline data were “not very clearly defined” and the criteria for success were “not transparent”.

With transport accounting for more than a third of the borough’s carbon emissions, low-traffic neighbourhoods (LTNs), which are designed to encourage walking and cycling, are one of the means by which the council aims to reach the 2040 target.

Cllr Gunawardena said the Green Party supported LTNs in principle but only if schemes were fair, evidence-based and transparent. “In any transition to the green economy, the burden of the transition process should not be borne by the poorest people,” he explained.

The Green councillor said the local party would set “measurable goals” for LTNs and take into account the effect of the schemes on people with protected characteristics, ensuring mitigation measures were in place for these groups before making LTNs permanent.

Cllr Gunawardena added that the Greens supported ‘school streets’ and 20mph speed limits in residential roads, and wanted to ensure cycle stores were installed in new blocks of flats to make it easier for people to travel by bike.

To boost recycling, he said the Greens supported the return of weekly bin collections, in addition to better education and



Charith Gunawardena became the Green Party’s first councillor in Enfield last year, after quitting Labour

engagement with residents. He also called for an independent impact assessment to be carried out on the planned new Edmonton incinerator and for a stronger scrutiny process within the council.

For more information on the Green Party in Enfield: Visit [enfieldgreens.org.uk](http://enfieldgreens.org.uk)

# Lib Dems to take ‘different approach’

BY SIMON ALLIN,  
LOCAL DEMOCRACY REPORTER

**E**nfield’s Liberal Democrats want to “bring back local accountability”, give individual councillors more freedom and be up-front with residents on key issues.

The group plans to contest every seat in the borough following a national resurgence that saw them win recent parliamentary by-elections in Chesham and Amersham and North Shropshire.

At the moment, they currently have one seat in Enfield, which is held by former Labour councillor Ayfer Orhan in Ponders End. She will now be contesting the newly-formed Whitewebbs ward alongside Rob Aaron-Wilson, the local Lib Dem chair who says the group hopes to win over voters by taking a “different approach” to local politics.

“It is to really bring back some sort of local accountability,” he said. “The other two main parties block vote. We wouldn’t do block voting – so you are actually there to represent your residents. I think there



Rob Aaron-Wilson is leading the Lib Dem charge in Enfield

are many things kicking about at the moment that need different approaches.”

In contrast to what he described as an “almost dogmatic” approach taken by the current Labour administration at Enfield Civic Centre, Rob said the Liberal Democrats would “properly consult

with residents on key issues such as low-traffic neighbourhoods.

“You’ve got to be honest with people,” he said. “Say what it’s going to be, and if it’s a success it stays, and if it doesn’t work, it comes out. We seemed to have turned it into a culture war, which is something that it really didn’t need to be.”

## ***“We want to bring back local accountability”***

Although the construction contract for the new Edmonton incinerator has been awarded, and no council can unilaterally cancel the scheme, Rob said the Lib Dems would back a pause and review of the project as part of the North London Waste Authority.

“We have got to go carbon neutral in five or ten years,” he explained. “This isn’t going to do it. You’re making a case to keep burning stuff. You need something – there is medical waste that needs burning – but we can’t go on as we are.

“You can life-extend what’s there. If you life-extend what’s there, you haven’t got the massive financial case to keep burning.”

The Lib Dems want to foster social inclusion by setting up community hubs in schools and libraries. “We need to have a lot more social inclusion,” Rob said. “I think a lot of mental health issues are caused by isolation.

“We’re here to make people’s lives a bit nicer. We have a lot of council facilities we could open up for cheaper nurseries. [The cost of] childcare is astronomical. We can run things at a local level that aren’t free but are cheaper.”

The Lib Dems also want to create a sustainable food programme for those in need by working with charities and businesses. Rob warned that more people are going to start to run out of money for food because of sharp increases in the cost of living. He said: “We seem to be focusing on our cars while people are going hungry – and they really are.”

For more information about the Lib Dems in Enfield: Visit [enfield-libdems.org.uk](http://enfield-libdems.org.uk)





## Award winning care homes

Our highly trained care home teams are specialists in residential, nursing, dementia and respite care. With some of the highest care ratings in the UK, we're here to help you and your family at every step of your journey.

If you're considering care, call **Jaime** on **0203 504 3665** or email **[jaime.stubberfield@careuk.com](mailto:jaime.stubberfield@careuk.com)**

Trusted to care.



Elizabeth Lodge care home  
Enfield  
[careuk.com/elizabeth-lodge](https://careuk.com/elizabeth-lodge)

**care UK**



# Celebrating resilience

*Basil Clarke reviews poet Myra Schneider's new book*

From a homeless man outside Sainsbury's to starving musicians defying an invading army – the subject matter of local poet Myra Schneider's new collection is wide.

But within *Siege and Symphony* there are themes that run through all the pages; Myra's love for people and nature, her celebration of their resilience, but also her awareness of the threats that face them.

Arnos Park, at the back of Myra's house,

is her daily refuge. *Cushion moss* finds her, troubled by the "sad paragraphs in the paper", visiting a copse in the park where she is struck by the vibrant green moss that cushions a fallen tree: "A green which fills my mind, feeds my arteries, a green that urges: never give up."

But Myra doesn't take the natural world for granted and is deeply concerned about how it is being polluted and damaged. Her poem *Becoming Plastic* ends with a vision of a midwife plucking a baby sheathed in plastic sheeting from a woman's womb.

The opening poem, *Resurgence*, celebrates the resilience of nature. A sycamore, once a "singing tree for starlings", has been felled. But despite its stump having been set on fire, Myra sees new buds and is "moved by the resolve to live in this world".

The same resolve is the subject of the long poem that gives the book its title, *Siege and Symphony*.

This tells the story of the siege of Leningrad during the Second World War, drawing on diary entries by a 17-year-old girl trapped in the city, and the writing by

Shostakovich of his *Leningrad Symphony*. It culminates in the performance of the symphony in the besieged city in August 1942, when conductor, musicians and audience were all weak from months of starvation.

Paintings are a frequent source of inspiration for Myra and the new book has a whole section of poems where a work of art has triggered a train of thought. In *The Model a Matisse*, painting is the starting point for a meditation about the subjugation of women.

Another form of social injustice that troubles Myra is the gulf between haves and have-nots, and in particular homelessness. She draws on incidents that she has witnessed; a man busking on a train, a boy sitting on the pavement in Mayfair, a homeless man in Arnos Grove who turns down her offer of a sandwich and asks for milk instead because he has lost all his teeth. She gives to beggars but is "pierced by shame".

**'Siege and Symphony' is published by Second Light Publications (ISBN 978-0-9927088-4-9) and all profits from sales go to the Woodland Trust:**

**Visit** myraschneider.co.uk

**Read an interview with Myra about her new book:**  
**Visit** pgweb.uk/myra



Poet Myra Schneider lives in Arnos Grove

Advertisement

## LICENSING ACT 2003 Notice of Application for a New Premises Licence/Club Premises Certificate\*

Notice is hereby given that **Nnamdi Ekwem** has applied to the Licensing Authority of London Borough of Enfield for a Premises Licence/Club Premises Certificate\* to permit:

- **The supply of alcohol for consumption OFF THE PREMISES. Our propose times for the sale of alcohol will be from 8am to 10pm Monday to Sunday**
- **For the premises: Nue African Supermarket Local situated at 212 Baker Street Enfield EN1 3JY**

The public register where applications are available to be viewed by members of the public can be accessed online by visiting <https://new.enfield.gov.uk/services/business-andlicensing/> and following the link to the Licensing Register. Email [licensing@enfield.gov.uk](mailto:licensing@enfield.gov.uk) to request a copy of the application within 28 days from the date of this notice. Any person wishing to submit relevant representations concerning this application must give notice by emailing [licensing@enfield.gov.uk](mailto:licensing@enfield.gov.uk), giving in detail the grounds of the representation no later than: **15/04/2022**

Representations received by post will not be accepted during the Covid-19 emergency period. The Council will not entertain representations where the writer requests that his identity remains anonymous. Copies of all representations will be included in the papers presented to the Licensing Authorities Sub Committee and will therefore pass into the public domain.

Representations must relate to one or more of the four Licensing Objectives: the prevention of crime and disorder, public safety, the prevention of public nuisance and the protection of children from harm. It is an offence, under section 158 of the Licensing Act 2003, to knowingly or recklessly make a false statement in connection with an application for a premises licence. A person guilty of an offence is liable on summary conviction to a fine not exceeding level five on the standard scale.

**Dated:** 19th of March 2022



# BUMBLEBEE

**LET ONLY:** 5.5% OF THE RENT (VARIABLE SUBJECT TO 20% VAT AND THE FINAL FEE OF 6.6% INCLUSIVE OF VAT)

**PROPERTY MANAGEMENT:** FULL MANAGEMENT - 7.5% OF THE RENT (VARIABLE SUBJECT TO 20% VAT AND THE FINAL FEE OF 9% INCLUSIVE OF VAT)



arla  
propertymark

BUMBLEBEEPROPERTY.CO.UK  
 @BUMBLEBEELDN

020 8359 3399

REFER A LANDLORD BY 31 MAY 2022 FOR  
THE CHANCE TO RECEIVE £150!  
(A LANDLORD AND TENANT AGREEMENT WILL NEED TO BE SIGNED BEFORE PAYMENT IS MADE - T&Cs APPLY)



# Power of the pop-up

## Angela O'Connell on the success of her pop-up art gallery in Palmers Green

I am a contemporary artist living in Palmers Green and I recently decided to test the local market to see if I could sell any of my paintings.

I thought the easiest way to do this would be to hold a pop-up art gallery in Palmers Green displaying an eclectic mix of my artworks. I chose a shop in Green Lanes which was empty because it was in-between leases. The landlady, Niki Louca, was happy for me to use her shop space as a pop-up gallery for a weekend in February.

I thoroughly enjoyed the experience, met lots of lovely local people, and made a good profit in a very short period! I was delighted with local support and, in particular, the efforts made by Palmers Green Action Team, who helped to promote my pop-up gallery. They are a voluntary community group working to help Green Lanes thrive and return it to the heart of the



A visitor enjoys Angela's art at the pop-up gallery in Green Lanes

community and they certainly helped drive some business my way.


This experience has given me the confidence to do more pop-up exhibitions, initially in other parts of North London where I will be again targeting empty shops and buildings with a short lease. Given my experience, I feel it would be highly beneficial if landlords, in

general, would allow creatives to utilise spaces that were empty, if only for a short time, for pop-up exhibitions.

Hosting pop-up galleries in high streets is not just beneficial for the artist, it adds interest to the community and hopefully inspires others to be more creative.


Check out Angela's art via her website:  
Visit [aocart.co.uk](http://aocart.co.uk)


Advertisement




**HOME VISIT/MOBILE  
EARWAX CLINIC**

REMOVAL OF EARWAX BY  
MICROSUCTION IN THE  
COMFORT OF YOUR OWN  
HOME






Affordable  
Clinic



Advanced  
Technology



Quality  
Audiologists

**We visit you! Call us 07399 050 435**

More information, visit us at:  
[www.northlondonearwaxclinic.com](http://www.northlondonearwaxclinic.com)

Make an appointment  
Call us 07399 050 435  
[info@northlondonearwaxclinic.com](mailto:info@northlondonearwaxclinic.com)

# LISTINGS

## Submit your listing

We can include low-cost community events taking place in Enfield. For next month's listings, email the details of your event to [enfielddispatch@socialspider.com](mailto:enfielddispatch@socialspider.com) by **Monday 18th April**

## ART

### Figuring It Out art exhibition

Until 24th April, Mon to Thu, 5pm-11pm, and Fri to Sun, 12.30pm-11pm  
The Southgate Club, 17 Chase Side, Southgate N14 5BP

Original oil paintings by Kevin M Gavaghan. A collection of brooding and evocative figurative paintings dancing around the fringes of surrealism and abstract art.

**Free entry**

**Visit** [kmgartist.com](http://kmgartist.com)

## JIU JITSU

### World Budo and Kobudo Federation (WBKF) seminar

Saturday 2nd April, 10am to 5pm, and Sunday 3rd April, 11am to 3pm  
ARK John Keats Academy, Bell Lane, Enfield EN3 5PA

We have instructors from Germany and Sweden attending as well as UK instructors teaching different styles of jiu-jitsu. On the Sunday we have world kyujutsu (Japanese archery) and we will also be holding a raffle in aid of Great Ormond Street Hospital Charity.

**Tickets £35 adults, £25 children (per day) including lunch**  
**Call** 07950 337 732  
**Email** [gabrielmass@hotmail.co.uk](mailto:gabrielmass@hotmail.co.uk)

## BLUES

### St Harmonica's Blues Club

Friday 8th April, 7pm  
The Southgate Club, 17 Chase Side, Southgate N14 5BP

Two bands for the price of one! The St Harmonica's house band, House Red, followed by The Blues Chapter, the most popular band ever to play at St Harmonica's.

**Tickets £10**

**Visit** [stharmonicas.co.uk](http://stharmonicas.co.uk)

## WALK

### Tour of Pymmes Brook

Sunday 10th April, 10.30am-4pm  
Near Great Cambridge Roundabout

Join the Pymmes Brookers for a free walk-and-talk along Pymmes Brook! We will explore a stretch of the river as it flows east of Great Cambridge Roundabout.

**Free to join but booking required**  
**Email** [pymmeswalks@gmail.com](mailto:pymmeswalks@gmail.com)  
**Visit** [bit.ly/36xc4VG](http://bit.ly/36xc4VG)

## THEATRE

### Easter Tales

From Sat 9th April until Thu 14th April (10am and 11.30am)  
Chickenshed, Chase Side, Southgate N14 4PE

The Chickenshed 'Tales from the Shed' team hope you will join them for an egg-stra special Easter-themed performance this April. The educational show is designed for all children aged up to six years.

**Tickets £7, free to babies**

**Visit** [chickenshed.org.uk/Event/easter-tales-22](http://chickenshed.org.uk/Event/easter-tales-22)

## CINEMA

### Talkies fundraiser for Ukraine

Saturday 23rd April, 7pm  
St John's Hall, Bourne Hill, Palmers Green N13 4DA

Raising funds for the Ukraine Humanitarian Appeal, Talkies will present a classic Ukrainian film, 'Man With a Movie Camera', a 1929 "cinematic masterpiece" by director Dziga Vertov, alongside The Cabinet of Living Cinema's exceptional and powerful new score.

**Tickets £8**

**Visit** [talkies.org.uk/event/family-event-the-enchanted-cinema-2](http://talkies.org.uk/event/family-event-the-enchanted-cinema-2)

Advertisement

## LICENSING ACT 2003 Notice of Application for a New Premises Licence

Notice is hereby given that **Baker Street Stores** have applied to the Licensing Authority of London Borough of Enfield for a Premises Licence to permit:

- Supply of alcohol on the premises from Monday to Saturday, 07:00-23:00 and Sunday 07:00-22:00 and opening hours of the premises Monday to Saturday, 07:00-23:00 and Sunday 07:00-22:00
- For the premises Baker Street Stores situated at 348, Baker Street, Enfield EN1 3LQ.

The public register where applications are available to be viewed by members of the public can be accessed online by visiting <https://new.enfield.gov.uk/services/business-and-licensing/> and following the link to the Licensing Register. Email [licensing@enfield.gov.uk](mailto:licensing@enfield.gov.uk) to request a copy of the application within 28 days from the date of this notice.

Any person wishing to submit relevant representations concerning this application must give notice by emailing [licensing@enfield.gov.uk](mailto:licensing@enfield.gov.uk), giving in detail the grounds of the representation no later than: **26/04/2022**.

Representations received by post will not be accepted. Representations must include your full name and address. Representations must relate to one or more of the four Licensing Objectives: the prevention of crime and disorder, public safety, the prevention of public nuisance and the protection of children from harm. It is an offence, under section 158 of the Licensing Act 2003, to knowingly or recklessly make a false statement in connection with an application for a premises licence. A person guilty of an offence is liable on summary conviction to a fine not exceeding level five on the standard scale.

**Dated:** 31 day of March 2022



## AROUND THE BOROUGH

### COCKFOSTERS

## Minister blocks tube station towers

TRANSPORT SECRETARY GRANT Shapps has said he will block Transport for London's plan to build hundreds of homes on car parks at Cockfosters Station.

The shock announcement came a month after Enfield Council's planning committee voted to approve planning permission for the scheme. It would have seen 351 homes built in four tower blocks up to 14 storeys tall, reducing the number of public parking spaces at the Grade 2-listed station from 370 to 47. More than 2,800 people submitted written objections to the Cockfosters scheme, with an online petition to save the car parks gaining nearly 3,900 signatures.

A letter sent by Shapps to Theresa Villiers, the Conservative MP for Chipping Barnet who had opposed the development after arguing it



would adversely affect her constituents, confirmed the government was intervening to prevent the car parks being built on.

Explaining how he would utilise a legal loophole to usurp the planning process, Shapps said in the letter: "I have taken the decision to reject the application submitted by Transport for London under Section 163 of the Greater London Authority Act 1999.

"This sought my consent to dispose of operational land at Cockfosters Station and car park.

"Thank you for raising your concerns on behalf of your constituents and for your previous correspondence on this matter. My department is committed to supporting Londoners to return to the public transport network and has provided close to £5billion in emergency funding to TfL over the last two years.

"I have taken the decision to reject this application as I am concerned that the parking provision at the station would be inadequate following the development proposed by TfL."

A TfL spokesperson said: "We are taking the necessary time to understand and consider the implications and available next steps that result from the decision."

Enfield Council declined to comment.

### PALMERS GREEN

## Theatre demolition approved

BY SIMON ALLIN, LOCAL DEMOCRACY REPORTER

PLANS TO DEMOLISH A HISTORIC theatre in Palmers Green have been approved for a second time, despite a hard-fought battle to save the venue.

The redevelopment of St Monica's Church Hall in Green Lanes – commonly known as Intimate Theatre – was given the go-ahead by Enfield Council's planning committee. It means the existing building can be knocked down to make way for a new church hall along with six two-bedroom flats.

The council initially granted permission for the hall's redevelopment in November 2020, but Theatres Trust threatened a

judicial review of the decision, disputing some of the advice given to councillors prior to their vote. After planning policies were updated, the council took legal advice and referred the application back to the committee for a fresh decision.

During a meeting in January, councillors chose to defer making a decision on the scheme to give St Monica's a chance to "explore whether the explicit use of theatre performance can be retained" by including provision for a moveable stage. The church subsequently supplied documents designed to show the new building could be used as a theatre, including a proposed layout indicating a 156-seater space with a moveable stage and lighting.

### MERIDIAN WATER

## Boost for rail services

BY SIMON ALLIN, LOCAL DEMOCRACY REPORTER

PLANS TO BOOST RAIL SERVICES at Enfield Council's £6billion Meridian Water regeneration scheme have taken a step forward.

The council has agreed a construction deal to create a passing loop at Ponders End Station, which will allow four trains per hour to serve Meridian Water Station, which was opened in June 2019.

The loop will enable fast trains on

the West Anglia Main Line to overtake stopping services at Ponders End Station, allowing more trains to stop at Meridian Water, which is presently only served by two trains per hour towards Stratford.

The works are set to be funded using part of a government grant that was awarded to the council to develop infrastructure as part of the Meridian Water housing scheme. To secure all of the funding available, construction needs to be completed by the end of March 2024.

### ENFIELD TOWN

## Dugdale revamp criticised

ENFIELD COUNCIL HAS REVEALED detailed plans to revamp the Dugdale Centre – but is again facing criticism over the reduced public space available.

With the arts venue still currently closed, the council has announced a £1.5million revamp ahead of its reopening. The plans include three new "presentation areas", an expanded café-restaurant and a "more prominent home" for Enfield Museum. A new "welcoming" entrance will be created in Cecil Road alongside outdoor seating.

The redesign by award-winning architects Dallas-Pierce-Quintero will include a mezzanine and a tiered seating area that can be used for performances, presentations or teaching. The 150-seat studio theatre will remain for larger performances, while Enfield Museum will be given a "movable exhibit area". EnFood, the council's food sustainability project, will continue to run the café at the Dugdale, but will add an "evening offer".



Enfield Council plans for the revamped Dugdale Arts Centre, designed by architects Dallas-Pierce-Quintero

The council says it hopes the revamped building will "become a key focal point to help revitalise Enfield Town and in particular the evening economy".

Conservative councillors criticised the revamp, however, with the council's overview and scrutiny committee voting to send a report on the refurbishment back to cabinet, with a request for more information on the project's finances.

Criticisms include concern over the space available for Enfield Museum being reduced, with only the ground floor now being used, a lack of storage space for the cafe and theatre, and "the failure to explain how moving the entrance enhances the centre".

The Dugdale opened in 2008 but has been closed to the public since 2020, having been used as a vaccination centre last year.

### ENFIELD LOCK

## Man jailed over killing

A 21-YEAR-OLD HAS BEEN JAILED for eleven years over the manslaughter of an Enfield Lock man who was fatally stabbed during a burglary at a cannabis factory.

Thirty-year-old Skender Ismaili was killed in the early hours of 17th July 2020 at an address in Lytton Avenue. Skender was involved in the illegal cultivation of cannabis but was said by a Met Police detective to have "paid too great a price" for

his involvement in the drugs trade.

Ali Coulibaly, aged 21, of Atkinson Road, Newham, pleaded guilty in December 2021 to the manslaughter of Skender. At a sentencing hearing at Woolwich Crown Court last month, Coulibaly was handed an eleven-year prison sentence. Four other men admitted aggravated burglary in connection with the attack and three were jailed.



## Top prize for tennis club

**A** Southgate tennis club has served up an ace at a regional awards ceremony.

Conway Lawn Tennis Club was named 'Middlesex LTA Club of the Year 2022' at the annual awards ceremony for the Middlesex County region of the Lawn Tennis Association.

LTA president David Rawlinson presented the trophy to Conway club chair Graham Sievers, who was in attendance for the ceremony at The Queen's Club in Kensington alongside several of Conway's committee members and coaches.

Graham said: "We were delighted to be chosen from over 100 clubs in the Middlesex region. Conway has a reputation as a lively, friendly, vibrant club set in a gem of a small park, Conway Rec.

"Winning the title is testament to the extraordinary work of the volunteers and the committee, the coaches and, of course, to all the members, who make the club such a thriving community."

Middlesex County is the largest LTA county in Great Britain, with more than 500 teams and 6,000 players participating in its winter and summer leagues.

Graham said: "In addition to welcoming a doubling of members during the pandemic, we worked with neighbours' support to gain an additional floodlit court, and we have installed a coffee shop in the clubhouse that one of our Italian members declared 'serves the best coffee outside of Italy'. Wonderful praise, but we agree!"



Conway club chair Graham Sievers at The Queen's Club in advance of receiving the 'Middlesex LTA Club of the Year' award

The club's thriving junior programme has received sponsorship from local firm Winchmore Brickwork Ltd, to help the juniors develop their game and succeed further in the county competitions.

Graham added: "The juniors are tennis' future, so we're delighted with receiving extra support and, together with winning club of the year, we are hoping for even greater success in 2022."

## Play-offs in sight

BY ANDREW WARSHAW

**G**ood Friday is not only the first day of the Easter weekend, it's also a chance to watch Enfield Town's penultimate home game of the regular season – which could prove to be a special occasion.

The club have been successful in bringing forward the game against Cray Wanderers by 24 hours from Saturday to Friday, with the idea of pulling in as many local fans as possible. Good Friday football is a rarity in itself but it might well be a day to remember.

By the time you read this, the Towners may already have clinched the coveted play-off place that everyone involved has been fighting for since day one of the season. If so, victory over Cray will be all-important in terms of trying to secure a home semifinal tie.

Alternatively it could be the very day that a play-off place is actually achieved, with just two fixtures to follow – at Potters Bar on Easter Monday and then at home to Bognor Regis, both of which are likely to be hugely anticipated occasions.

Whichever scenario is at play on Good Friday, the Cray game is unmissable in terms of supporting the borough's biggest club in its quest to reach National League South. The squad has changed radically since the last time Town reached the play-offs five years ago. That year the club picked up a remarkable 22 points from their final eight games in the league season but conceded

after less than a minute against Dulwich Hamlet, who went on to win 4–2.

One player who remembers it well is Nathan McDonald, the goalkeeper now in his second spell with the Towners. Nathan can't wait to have another crack at trying to get Enfield promoted.

"It was heartbreaking," Nathan told the *Dispatch*. "After all the hard work to get into the play-offs and then blow it in that one game. We were 3–0 down before we could even respond.

"In my view the team we had then probably under-achieved, whereas the hallmark of this side is we have incredible spirit and togetherness."

Grinding out wins has been an important factor, something no team can do without experience. There was a period when the club were pushing for automatic promotion, then it looked as if they might fall away, only to get firmly back into the play-off positions.

"It's been a bit of mixture to be honest," explains Nathan. "But we've got a great management team who plan everything out.

"Having lost at Dulwich five years ago, I'd love us to have home advantage this time round. I've had two promotions with Braintree but it would mean the world to me if I could do it with Enfield.

"This would mean so much more. There are teams in the division with far bigger budgets who will miss out, maybe because they haven't got our spirit. We're a fan-owned club and I know how much it would mean to the supporters."

Advertisement

### LICENSING ACT 2003 Notice of Application for a New Premises Licence/Club Premises Certificate\*

Notice is hereby given that **Wise Sons Group Limited** have applied to the Licensing Authority of London Borough of Enfield for a Premises Licence/Club Premises Certificate\* to permit:

- The wholesale distribution of alcohol through Amazon. Alcohol will not be sold to the public from these premises.
- For the premises: Wise Sons Group Limited situated at Suite 502, Level 5, 100 High Street, London N14 6BN

The public register where applications are available to be viewed by members of the public can be accessed online by visiting <https://new.enfield.gov.uk/services/business-and-licensing/> and following the link to the Licensing Register. Email [licensing@enfield.gov.uk](mailto:licensing@enfield.gov.uk) to request a copy of the application within 28 days from the date of this notice.

Any person wishing to submit relevant representations concerning this application must give notice by emailing [licensing@enfield.gov.uk](mailto:licensing@enfield.gov.uk), giving in detail the grounds of the representation no later than: **20/4/2022**

Representations received by post will not be accepted. Representations must include your full name and address. Representations must relate to one or more of the four Licensing Objectives: the prevention of crime and disorder, public safety, the prevention of public nuisance and the protection of children from harm.

It is an offence, under section 158 of the Licensing Act 2003, to knowingly or recklessly make a false statement in connection with an application for a premises licence. A person guilty of an offence is liable on summary conviction to a fine not exceeding level five on the standard scale.

Dated: 23rd day of March 2022

### The Bridge - Acting Group -

#### DO YOU WANT TO ACT?

Join our new beginners performing group

• Tuesdays from 5-7PM •

Email: [hello@facefront.org](mailto:hello@facefront.org)

Registered Charity No.1116506

### Goods Vehicle Operator's Licence

**MALCOLM RONALD DALTON T/A RDT, of Riverside Yard, Gas Road, Eurolink Business Park, Murston, Sittingbourne, Kent ME10 3SH** is applying for a licence to use LIDL UK GMBH, 8 Ardra Road, London N9 0BD as an operating centre for 8 Goods vehicles and 8 Trailers.

Owners or occupiers of land (including buildings) near the operating centre(s) who believe their use or enjoyment of that land would be affected, should make written representations to the Traffic Commissioner at Hillcrest House, 386 Harehills Lane, Leeds, LS9 6NF stating their reasons within 21 days of this notice. Representors must at the same time send a copy of their representations to the applicant at the address given at the top of this notice. A guide to making Representations is available from the Traffic Commissioner's office.



### Adults & 50+ Classes:

Swim, Badminton, Pilates, Yoga, Stretch & Mobilise, Nordic Walking, Tai Chi, Tennis, Zumba, FREE Walks

### Children's Activities:

Baby Yoga, Gymnastics & Badminton

For more info & bookings  
[Activeenfield.uk/whats-on/](https://activeenfield.uk/whats-on/)

or contact us at [sport@enfield.gov.uk](mailto:sport@enfield.gov.uk)



# Support independent local journalism

## What we do

Here at *Enfield Dispatch* we do things differently. We combine professional journalism with voluntary contributions from people who live and work in the borough and create content which is responsive to and reflective of the community.

These are challenging times for print media with many newspapers closing and advertising revenue in decline, but our not-for-profit model offers a new approach to creating local journalism which is inclusive and accountable.

## How you can help

As a not-for-profit publication we rely on the generous support of our community. We look to our readers, who recognise the value of independent journalism, to help support us.

You can do this by becoming a member either as an individual or as an organisation. See the rewards opposite and once you've decided what package you would like, visit our website:

[enfelddispatch.co.uk/join](https://enfelddispatch.co.uk/join)

## Individual rewards

### £3 per month upwards:

Name in print and online, pin badge

### £5 per month upwards:

Name in print and online, pin badge, tote bag, paper posted to you every month

## Organisational rewards

### £10 per month:

Name in print and online, 10% discount on advertising

### £20 per month:

Name and logo in print and online, 20% discount on advertising

### £50 per month:

Name and logo in print and online, 40% discount, six free small adverts per year

## Members

Derek Grant, Michael Dickinson, Young Notes, Ed Balleny, Natasha Boydell, Elizabeth Crosthwait, Richard Stones, Philip Ridley, Suzanne Beard, Chris Kaufman, Martyn Stogden, Susan Cook, Rupert Price, Meryn Cutler, Andrew Irvine, Basil Clarke, John Naughton, Right at Home Enfield, MumSing Choir, Lloyd Tew-Cragg, Andrew Warshaw, Neil Churchill, Karl Brown, Anthony Fisher, Dan Wright, Kay Heather, Julia Mountain, Jerome O'Callaghan, Carole Stanley, Mervyn Maggs, Aditya Chakraborty, Norman Bennett, Vivien Giladi, Greg Andrews, The Old Enfield Charitable Trust, Matt Burn, Martin Russo, Marilyn Hamilton, Laura Davenport, Mick Wood, Helen Osman, Enfield Over 50s Forum, Francis Sealey, Caroline Banks, Bill Linton, Joe Hickey, William Yates, Petr Mitterbach, Gianni Sarra, Tracy Hughes, Kristiana Heapy, Neil Bachelor, John Crowther, Hannah Salvidge, Sean Wilkinson, Janice Nunn, Julia Daniel, Deborah Dagleish, Philip Foxe, Phil H, Däna Roberts, A Cleary, Stephen Evans, Julian Rhys-Williams, Steve King, Robert Pite, Lauri Clarke, Anne Cullen, Ross Cunningham, Diana Goforth, Kirsten Lowe, Seton During, Aurora Yaacov, Sylvia Collicott, Paula Lamont, Liz Wright, Elsie Rigden, Sangeeta Waldron, David Mickleburgh, John Machin, The Enfield Society, Joe Studman, Ryan Hebbs, Adam White, Sue Grayson Ford, Matt McLaren, Bush Hill Park Residents Association, Zoe White, Carol Fisk, Harriet Ray, Hannah Dyson, Peter Krakowiak, Friends of Hillyfields, Julie Nedza, Lynda Dyson, Phil Gooch, Chris Skilbeck, Peter Camppling, Alison Shepherd, Chris Graham, Lindsay Rawlings, Harri Ramanathan, Per Hansen, Carlo Rimini, Jean Christou, Bhasmank Mehta, Sheila Spooner, Harry Redmond, Marcia Jane Chamberlain, Anita Jena-Smol.

## Member organisations



To become an  
organisational  
member email:  
[klaudia@  
socialspider.com](mailto:klaudia@socialspider.com)