

# ENFIELD DISPATCH

No.51 THE BOROUGH'S FREE COMMUNITY NEWSPAPER

DEC 2022

## FEATURES

Help available for local residents impacted by the pandemic

P.4

## NEWS

High Court judge dismisses anti-LTN legal challenge

P.6

## COMMENT

Why I blocked a Russian oil tanker in the Thames

P.8



A LOCAL EDUCATIONAL charity has marked five years since launching in Enfield with a celebration where its chair said its work supporting schools was needed "now more than ever". Success Club exists to support schools, empower children and promote their achievement, with a mission statement of "no child left behind". It was founded by Tony Dallas, pictured above alongside children from the club. Read more at [enfielddispatch.co.uk](http://enfielddispatch.co.uk)

## Call for Labour committee chairs to step aside over interests controversy

BY JAMES CRACKNELL

The Labour chairs of three Enfield Council committees are facing calls to stand down after it was revealed they omitted key information from their register of interests after this year's local election.

An investigation by the *Dispatch* last month found that the trio of senior councillors – Sinan Boztas, Sabri Ozaydin and Mahym Bedekova – failed to fully disclose their financial interests in the borough, prompting Enfield's Conservative group leader to demand they step aside while an investigation takes place.

The three Labour members were first elected to the council in 2018 and re-elected in May. Councillors are required to declare their financial interests in the borough upon being elected and to keep these records updated whenever there's a change, with the council's code of

conduct warning: "Failure to register a disclosable pecuniary interest could be a breach of the code and a criminal offence".

On his original register of interests form, Cllr Boztas – chair of Enfield's planning committee – did not specify which properties he owned in the borough, simply writing he owned "4 lands". Explaining his omissions, the Lower Edmonton councillor said: "I was unclear I was required to add the addresses [...] The omission was flagged to me by officers earlier this month [November] when they were reviewing the forms, and I swiftly replied and provided all the information."

However, despite these assurances, at time of going to press only three of Cllr Boztas's four properties had been declared on the register.

Cllr Ozaydin – chair of Enfield's councillor conduct committee – did not declare on his original form

that he is the director of council-owned firm Housing Gateway Ltd as well as River Front Properties Ltd, which is owned by the Labour Party and is mentioned in planning documents submitted as part of an application to redevelop Labour's Celbic Hall building in Lancaster Road. The scheme was approved last month with votes by the planning committee's Labour councillors, although Cllr Ozaydin is not among them.

The Enfield Lock councillor said: "River Front Properties is a Labour Party-owned building in Enfield. My declaration form declares I am a member of the Labour Party. Housing Gateway is a council-owned company, which I am appointed onto at full council which is a public meeting and publicly available documents [sic]."

Cllr Bedekova – chair of Enfield's general purposes committee – declared on her original register

of interests form that she owns an ex-council flat that she lets to a tenant, but did not specify where in the borough this was. The Haselbury councillor did not respond to a request for comment and, at press time, had not updated her register of interests.

Enfield Conservatives leader Alessandro Georgiou said: "Clearly it is wholly improper for any councillor to not declare something on their register of interests form."

"Cllr Boztas has questions to answer and should not be determining planning applications while this cloud hangs over his head. Cllr Ozaydin, as chairman of the councillor conduct committee and Labour chief whip, really should know better."

A council spokesperson said: "All members are aware of the need to maintain their register of interests [...] We are aware a number of councillors updated their registers recently."



  
[enfielddispatch.co.uk](http://enfielddispatch.co.uk)

  
[enfielddispatch@socialspider.com](mailto:enfielddispatch@socialspider.com)

  
[@EnfieldDispatch](https://twitter.com/EnfieldDispatch)

  
[@EnfieldDispatch](https://www.instagram.com/EnfieldDispatch)

  
[/EnfieldDispatch](https://www.facebook.com/EnfieldDispatch)



CHAMBERLAINS  
ESTATES

020 8366 3551  
[chamberlainsestates.com](http://chamberlainsestates.com)

The Dispatch is supported by Chamberlains Estates – turn to page 3

# ED.

**No.51**  
**DEC 2022**

Enfield Dispatch is the borough's free community newspaper. We publish monthly and distribute 15,000 free copies of each issue

**Publisher**  
David Floyd

**Editor**  
James Cracknell

**Designer**  
Jonathan Duncan

**Head of Advertising**  
Klaudia Kiss

**Local Democracy Reporter**  
Simon Allin

**Contributors**  
Anna Draper, Helen Osman, Benji Bailes, Paige Ballmi, Lee Chamberlain, Neil Littman, Chris Silwood, Lucy McGinn, Andrew Warshaw

## CONTACT

Call 020 8367 2975

Email [EnfieldDispatch@socialspider.com](mailto:EnfieldDispatch@socialspider.com)

Post Nicholas House, River Front, Enfield EN1 3TF

## ADVERTISING

Call 07732 000 430

Email [klaudia@socialspider.com](mailto:klaudia@socialspider.com)

For licensing enquiries:

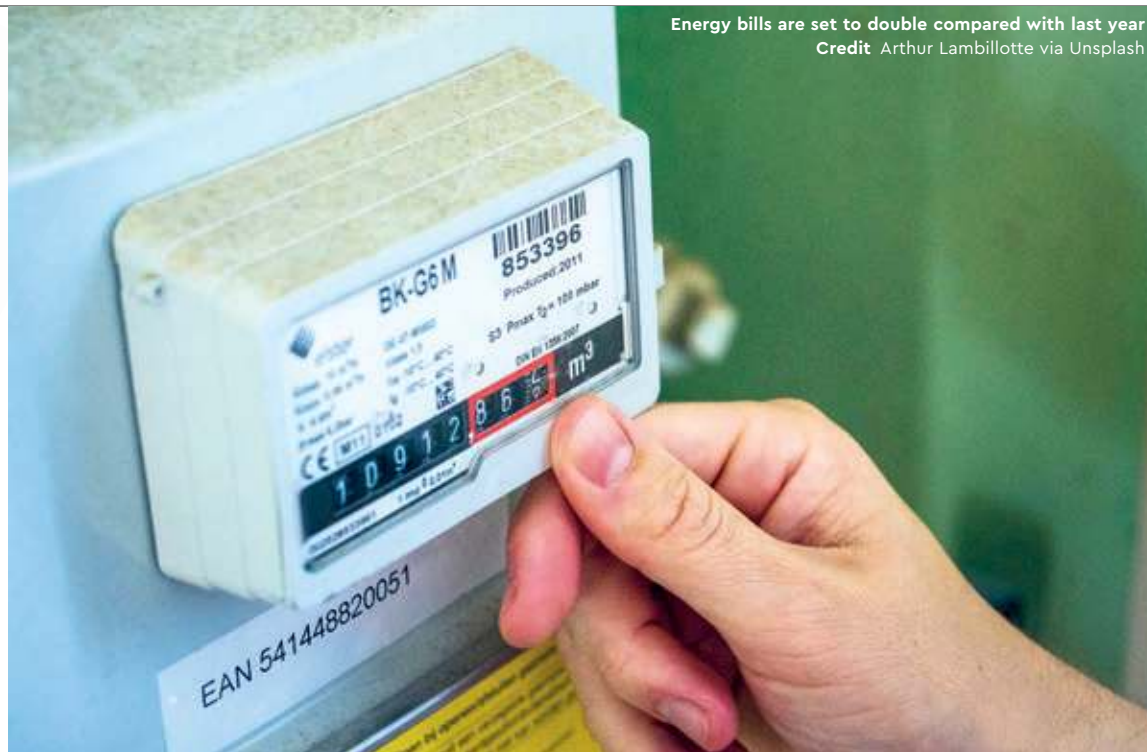
Email [maia@socialspider.com](mailto:maia@socialspider.com)

Enfield Dispatch is published by Social Spider Community News:

Visit [socialspidercommunitynews.co.uk](http://socialspidercommunitynews.co.uk)



Enfield Dispatch is a member of IMPRESS: The Independent Monitor of The Press. For more information on the Dispatch's complaints policy and how to make a complaint visit: [enfielddispatch.co.uk/complaints](http://enfielddispatch.co.uk/complaints)



Energy bills are set to double compared with last year  
Credit: Arthur Lambillotte via Unsplash

# 'Energy shock' to cost Enfield residents £110m per year

BY JAMES CRACKNELL

**T**he impact of soaring energy bills in Enfield has been revealed by a group of university academics who warn of a "drastic decline in real standards of living" for local people.

An expert team from University of Warwick carried out research on what they dub the "energy shock" across a broad sample of local areas in England and Wales, with Enfield chosen among them. They found that the cumulative effect of rising heating and electricity costs will take £110million from the pockets of Enfield residents every year.

The research concluded that "the average household in Enfield may see increases in energy bills of £1,128 per year, even with the existing government support in place".

In better news, the Warwick academics also found evidence of "a large potential for energy savings" in Enfield, with a 33% reduction in energy use possible from taking steps such as improving insulation and upgrading to high-efficiency boilers. Such measures, if implemented, would save residents between £60m and £86m per year and also slash carbon emissions by 123,000 tonnes. However, to make these reductions possible would require a combined investment of £482m in 54,229 of Enfield's worst-affected properties.

In their paper looking at the energy crisis in Enfield, Warwick

University academics Thiemo Fetzer, Ludovica Gazze and Menna Bishop write: "The energy crisis is a broad-based economic shock that can threaten social and economic stability in the UK and it will see households in Enfield hit hard."

"Even with government support [...] we estimate that the average household in Enfield will see an increase in their energy bill of £1,128 relative to prices from October 2021."

"Importantly, the government financial support to households is not itself without costs, as the government either will have to borrow, cut spending, or raise taxes in order to finance the energy price support package. As such, households will have to pay the price of higher energy either directly, or indirectly."

They add: "Even households who already consume very little energy – which are typically among the poorest – will be hit hard. Households at the tenth percentile of the energy consumption distribution (that is, 90% of households consume more energy than them) are projected to see an increase in energy bills of £618 despite the support from the energy price guarantee."

"Households who have such low energy consumption typically live on a household income of less than £15,000 per year. For these households this shock, in the context of broader inflationary pressures, may cause a drastic

decline in real standards of living which may threaten social cohesion and social stability."

Thiemo, who is Warwick's professor of economics, told the *Dispatch* the aim of the group's research had been to "raise awareness with local councils and local government of the large energy savings potential that is untapped in local communities". He said: "We are hoping to use our work to encourage collaborations between local councils and the research team to improve our understanding of why, for example, existing schemes have failed to deliver and what can be done to expand and scale-up existing schemes."

The researchers also emphasised that helping households insulate their properties would be a "win-win-win" as households could permanently save money, help fight the climate crisis and also "reduce our vulnerability to foreign powers that may use energy as leverage or as a weapon" as was happening with Russia's ongoing invasion of Ukraine.

The University of Warwick has even offered to help Enfield Council develop an action plan for cutting energy consumption locally, with Thiemo saying it was "happy to assist in identifying barriers to take-up of energy efficiency investments" as well as design schemes to "overcome these barriers". He added: "Such a partnership can make your district an example to follow in the whole country."

## Boundary changes

**T**he Enfield Southgate parliamentary constituency could be merged with parts of Haringey.

The Boundary Commission published its latest proposals for redrawing Westminster constituencies and proposed joining Enfield Southgate with Bounds Green, Noel Park, White Hart Lane and Woodside wards in Haringey, creating a new 'Southgate and Wood Green' seat.

Although there's no reduction in the number of North London seats, the Boundary Commission needs to make the constituencies more equal in size. Haringey currently has two MPs, while Enfield has three. Previous plans would have seen parts of Chipping Barnet join Enfield Southgate instead.

View the latest Boundary Commission proposals and have your say before 5th December:  
Visit [bcereviews.org.uk](http://bcereviews.org.uk)

## Carbon capture

BY JOSH MELLOR, LOCAL DEMOCRACY REPORTER

**T**he controversial new Edmonton incinerator could include a 'carbon capture' facility to reduce its carbon emissions.

North London Waste Authority (NLWA) is currently building a new, larger incinerator at Edmonton Eco Park. Construction work began in September. In October, an NLWA committee approved an initial budget of up to £2.5m to investigate whether it would be possible to include a carbon capture plant alongside the new incinerator, with the possibility of £7.5m more at a later date. If built, it would capture most of the carbon dioxide (CO2) the incinerator is expected to produce each year, which would then need to be transported and stored under the sea.

However, NLWA members raised concerns about the process of transporting the captured CO2 out of North London – to either the Kent or Norfolk coast. Using lorries would need "around 100" trips a day, while south-east England's railways are already congested and laying a pipeline from Edmonton to the coast "will be challenging". Brian Mark, an engineer who has advised the government on incinerators, said carbon capture is "wishful thinking" and told the Local Democracy Reporting Service: "It's all been done in proof-of-concept installations but the costs just make it 'la la land'."

# CHAMBERLAINS

## E S T A T E S

Wishing all our Clients, new and old, a very Merry Christmas and a Healthy and Happy New Year



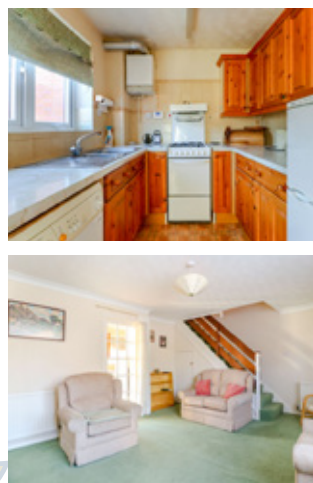
STUNNING 5/6 BEDROOM VICTORIAN FAMILY HOME – EPC F  
Chase Green Avenue, Enfield, Middx EN2  
£1,150,000 Freehold



18TH CENTURY CHARACTER COTTAGE – EPC D  
Gentleman's Row, Enfield, Middx EN2  
£850,000 Freehold



THREE BEDROOM SEMI DETACHED HOUSE – EPC D  
Gladbeck Way, Enfield, Greater London EN2  
£575,000 Freehold



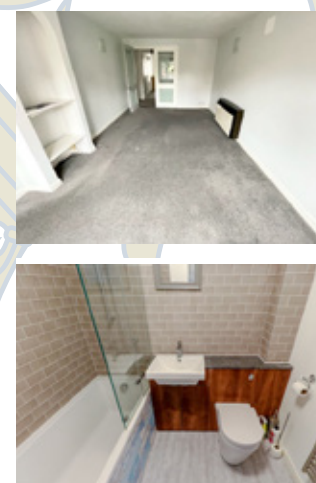
THREE BEDROOM FAMILY HOUSE – EPC C  
Harington Terrace N18  
£475,000 Freehold



GROUND FLOOR TWO DOUBLE BEDROOM APARTMENT – EPC C  
Vermont Close, Enfield EN2  
Guide Price £350,000 Share of Freehold



TWO BEDROOM APARTMENT – EPC BAND B  
John Gooch Drive, Enfield, Greater London EN2  
£310,000 Share of Freehold



## Help available for residents impacted by pandemic

*Anna Draper from Mind in Enfield and Barnet introduces a new local service launched in collaboration with Citizens Advice Enfield*

**A** new partnership between Citizens Advice Enfield and Mind in Enfield and Barnet is supporting Enfield residents impacted by the Covid-19 pandemic.

Residents can access counselling and emotional support delivered by Mind in Enfield and Barnet as well as advice on housing, benefits and debts offered by Citizens Advice Enfield.

We are working with our commissioners North Central London Integrated Care Board (ICB) towards reducing health inequalities in the Enfield community, including increased access to mental health services and providing advice on benefits, housing and debt, targeting Enfield's most deprived areas.

The project is fully funded by North Central London ICB and enables free access to early intervention to prevent housing problems while contributing to poverty reduction through advice on welfare benefits and debt management. It also facilitates early access to mental health support and reduces inequalities which exist in accessing mental health services, particularly for people from black and ethnic minority backgrounds.



Hundreds of local people suffering long-term impacts from the pandemic have sought help via the new service Credit: Onder Ortel via Unsplash

**"Our team of counsellors offer a safe and confidential space to talk and make sense of the losses and challenges people have experienced"**

We consider that people's mental health and wellbeing is intrinsically linked to their social, financial and economic situation. Being able to offer both practical and psychological support helps people make changes to their lives and feel empowered to seek additional help.

Citizens Advice Enfield supervisor Hilary Meeks, explaining the benefit of this collaborative support, says: "For our clients whose mental health has been severely impacted by Covid-19, Citizens Advice Enfield offers appointments with a dedicated caseworker, giving access to quality advice and hardship support, either face-to-face or by telephone.

"Appointments are made either via direct referrals from Mind, via our advice line, or our dedicated email address for this service. Areas of advice covered include housing, benefits, debt, consumer rights and immigration. We believe that no-one should be disadvantaged due to lack of knowledge about rights and responsibilities, and the advice and support we provide has helped relieve anxiety by ensuring that our clients understand their options. In addition, we make direct referrals to Mind in Enfield and Barnet where the client needs emotional support."

Caroline Fuseau, therapy projects manager at Mind in Enfield and Barnet, adds: "Two years on, we are still seeing the impact of

the pandemic on some of our residents' mental health. This ranges from ill-health linked to contracting Covid-19 and suffering from long Covid, to the long-term impact of lockdowns on family relationships and parenting, and the numerous bereavements experienced during or as a result of the pandemic. This is compounded by the current cost-of-living crisis.

"Our team of counsellors offer a safe and confidential space to talk and make sense of the losses and challenges people have experienced. This might include helping clients find resilience, coping strategies, manage anxiety, but more generally work on any identified mental health issues they have shared with us.

"Once they have completed their counselling, clients can access additional support and services within Mind in Enfield and Barnet and partner organisations if they have identified with their counsellors additional needs or goals."

Since opening in April this year the project has offered more than 300 hours of counselling and the same number of residents have been offered expert advice by Citizens Advice Enfield. But we still have space for referrals, so please get in touch.

**To enquire about receiving free help, advice and counselling:**

**Email** [bereavement@mindeb.org.uk](mailto:bereavement@mindeb.org.uk)

**Visit** [citizensadviceenfield.org.uk/contact-us](https://citizensadviceenfield.org.uk/contact-us)

## Putting the community first

*Helen Osman on the progress made with the Firs Farm Community Hub fundraising appeal*

**I**n the September issue of *Enfield Dispatch* I wrote about the launch of a crowdfunding appeal by the Friends of Firs Farm to help bring new facilities for volunteers and visitors to the wetlands and wider recreation ground.

The friends group has been campaigning for over four years to build a community hub and visitors centre at Firs Farm – which would include a café, toilets and education and fitness space – on the disused car park in Firs Lane, between the wetlands and the playing fields.

Delays with planning permission, Covid-19 and now escalating building costs made it feel like we were taking two steps back for every step forward, but I can now confirm the good news that these facilities will finally be coming to Firs Farm in the coming weeks.

Our modular building is now on the production line and is set to be erected in January, depending on how long it takes to get utilities to the site. We have raised an amazing £250,000 – out of our crowdfunding target of £275,000 – thanks to some grants as well as donations from more than 350 residents. Grants have been made by the Aviva Community Fund and from Sport England, which is

keen to see more use made of the Firs Farm sports pitches.

We would also like to thank local plumber merchants TG Lynes, which selected Firs Farm for a £7,500 donation of materials and labour through its 'Helping Hands' good causes initiative. We now have sufficient funds for the building, to install the kitchen and toilets, plus cedar cladding and a green wall to blend the hub into the surrounding natural habitat.

However, fundraising continues to raise the last £25,000 needed to fit out the sensory room, provide a defibrillator, bicycle racks and more, before a planned spring opening. You can still donate to our crowdfunder charity page and we would be delighted to hear from other local businesses which can support us.

We have come a very long way since we filmed our appeal video on a hot day in August, but we couldn't have got this far without local community support and also Enfield Council for having faith in what a group of volunteers can achieve. We are excited to be close to the finishing line and look forward to welcoming you to Firs Farm Community Hub in 2023.

**Support the Friends of Firs Farm crowdfunder:**

**Visit** [crowdfunder.co.uk/p/friends-of-firs-farm-charity](https://crowdfunder.co.uk/p/friends-of-firs-farm-charity)



Firs Farm Community Hub will be constructed using a modular design similar to this one Credit: AV Danzer

# London's environmental college

Apply for a part-time  
course starting in  
January 2023



Agriculture



Arboriculture  
and forestry



Floristry and  
event styling



Garden and  
landscape design



Horticulture and  
landscaping



Maths

Virtual Advice Session

Thursday

8

December

6pm to 8pm  
Register now

Capel Manor College  
Enfield

capel.ac.uk

# Judge dismisses anti-LTN legal challenge

Council admits making mistakes in public consultation and 'limitations' with LTN data but judge rules in its favour

BY JAMES CRACKNELL

A High Court judge has rejected a legal challenge brought by a local resident against one of Enfield Council's low-traffic neighbourhoods (LTNs) – while agreeing there were several "deficiencies" in the way the authority consulted on the scheme.

In a verdict which the council said it welcomed, seven grounds for challenge against the traffic orders used to implement the Fox Lane Quieter Neighbourhood – the official name for the LTN – permanent. The Fox Lane LTN trial from September 2020 were dismissed by Justice Eyre on the basis they'd not caused "substantial prejudice" to the claimant, local resident and business owner Sophia Bouchti.

However, at the court hearing the council also accepted "there were some errors" relating to the public consultation process which preceded its decision earlier this year to make the Fox Lane Quieter Neighbourhood – the official name for the LTN – permanent.

Sophia had brought the case on behalf of anti-LTN group One Community Against the Fox Lane LTN, which said in a statement following the judge's verdict last month that it was "very disappointed" but emphasised that the verdict should not be seen as a validation of the council's decision to make the LTN permanent.

In a long written judgement published on 9th November, Justice Eyre spelt out his reasons for dismissing the seven grounds for Sophia's challenge against the council's Fox Lane LTN traffic orders.

The first two grounds alleged procedural failings in the council's public consultation – one concerning the failure to publish a 'statement of reasons' on the council's website for the first two months of the initial six-month consultation and another alleging that a revised traffic order published in June 2021 should have triggered a fresh six-month round of consultation.

The judge said the council accepted there was an "oversight" in the failure to publish the statement of reasons between 26th August and 26th October 2020 and that this amounted to "a failure to comply with the requirements". He added that the traffic order issued on 30th June 2021 – which the council claimed was issued to correct a misdescribed address – was not a variation of the previous traffic order and that "it follows that the stance it initially adopted was a failure to comply with the relevant requirements".



The Fox Lane low-traffic neighbourhood was installed between Southgate and Palmers Green in summer 2020, initially on a trial basis, and was made permanent earlier this year

*"The council accepts there were limitations in the data"*

However, on these two grounds the judge concluded "there is no suggestion that the council's failures prevented the claimant herself from learning fully about the proposals or from advancing her objections to them".

The third ground was a claim the council "failed to conduct a fair consultation" as a result of the previously identified failures. Because the council initially said its June 2021 traffic order did not supersede the previous order, Sophia said the council had "limited the scope of objections" that could be made afterwards. She also said traffic count data should have been released prior to the publication of a report recommending the LTN be made permanent.

But the judge said the council's failure to disclose the data and surveys "did not render the consultation process unfair" and that "the claimant's ability to give a response identifying the adverse effect on her business activities was not dependent" on having advance sight of the data but instead "her practical experience".

He added: "The exercise of deciding whether to make the experimental measures permanent was not a matter of counting heads but of considering the arguments. The arguments were clearly identified and were considered."

The fourth and fifth grounds alleged the council failed to properly consider certain aspects of the LTN scheme, including "the danger posed by long vehicles entering the QN area and having to reverse". But the judge said he was "satisfied there was sufficient consideration" of the issue "and of road safety matters generally".

The sixth ground was Sophia's suggestion

and did not post messages, while the fact that (then) deputy leader Ian Barnes and councillor Ergin Erbil were members was not "evidence that a particular councillor is pre-disposed to support policies" and that councillors were elected "to some extent on the footing that they will approach issues of a particular kind".

The final ground of challenge was alleged "irrationality" in the council's decision-making based on "limitations" in the data gathered. While "the council accepts there were limitations in the data" the judge said that "it took steps to address a number of those limitations" and "it will almost always be the position that there is more information which could be obtained or further investigations which could be undertaken before a public body makes a decision".

In response to the High Court judgement, One Community said in a statement it was "very disheartening" for Sophia "and all those whose lives have been made much worse by the Fox Lane LTN".

A council spokesperson said the authority was now proposing a number of planned changes to the project, "including permits for Blue Badge holders living in the area and increasing access for emergency services through the use of additional ANPR [automatic numberplate recognition] cameras, as requested by the London Ambulance Service". However, other changes that had been demanded by residents, such as the reopening of Meadway, will not be going ahead.

Advertisement

**DISCOVER YOUR INNER ARTIST 14-WEEK ART COURSE**  
 £15 DISCOUNT PER PERSON IF YOU SIGN UP FOR SPRING TERM (STARTING IN JANUARY) AND BRING A FRIEND

**SO MANY GIFTS, ALL ROLLED INTO ONE!**

WE RUN SMALL CLASSES AND OUR SPACES GET FILLED QUICKLY SO IF YOU ARE INTERESTED GET IN TOUCH ON 020 4542 7606 AND LEAVE YOUR DETAILS FOR OUR OFFICE TO CONTACT YOU WITH FURTHER INFORMATION.

WITH CHRISTMAS NEARING, WHY NOT CONSIDER GIFTING THE COURSE TO A LOVED ONE? THEY AND YOU WILL NOT REGRET IT.

**the Seasons Art Class**

THE SEASONS ART CLASS, COCKFOSTERS, AND ENFIELD

10 YEARS

# Waltham Forest College

think  
**BIG**

## OPEN EVENT

Sat 28<sup>th</sup> January, 10am-2pm

Guided Campus Tour

Chat to Students and Staff

Interactive Taster Events

'What are T-Levels?' Presentation

Admissions Advice and Guidance

Apply for a Course



Visit [waltham.ac.uk](https://waltham.ac.uk) or scan the QR code to register.

## ADULT COURSES January 2023

It's the perfect time to enrol on a course starting in January 2023.

### Part-time & Full-time Courses

- Baking & Pastry
- Computing & IT
- Employability
- English, Maths & ESOL
- Hair, Beauty & Barbering
- Access to HE: Nursing & Midwifery

Visit [waltham.ac.uk](https://waltham.ac.uk) or scan the QR code to apply.



### STUDY FOR FREE!

You may be entitled to study for free if:

- You earn an annual gross salary of less than £23,302.50 or are in receipt of benefits.
- You are 19-23 and this is your first time studying a full Level 2 or Level 3 course.

020 8501 8501 [myfuture@waltham.ac.uk](mailto:myfuture@waltham.ac.uk)

707 Forest Road, Walthamstow, E17 4JB

[f](#) [@](#) [d](#) [t](#) [in](#) [v](#) #CreateYourFuture

# Why I blocked a Russian oil tanker



Benji Bailes pictured during the Greenpeace protest on the River Thames in April  
Credit Fionn Guilfoyle/Greenpeace

A local Greenpeace activist heralds a landmark verdict after he was cleared in court over his protest blocking an oil tanker in the River Thames

BY BENJI BAILES

Under the cover of darkness, we silently carried the boats down to the shore. As the boat crews rigged up the engine, me and my climbing partner completed our final safety checks and lifted our equipment on board, being careful not to pierce the inflatable hull with any stray metal objects attached to our harnesses.

The quayside was slippery and one misjudged step might send us into the water. It was shortly after last orders at the nearby pub and three inquisitive bystanders had stumbled upon us, asking a few innocent questions about what they thought was our 'training exercise'.

As we got the nod to go, the boat driver set us off into the darkness. High tide was almost upon us and the waters of the Thames Estuary were calm. Faint specks of light in the distance revealed our target across the water.

As we approached the Navigator Terminals, an oil facility in Essex

close to the London border, one of the crew signalled towards a ladder in the distance. A tanker, the Andromeda, was carrying 33,000 tonnes of Russian diesel and was due to dock here soon. We needed to get there first.

The driver held the front of the boat steady against the ladder, and one-by-one we climbed up to the jetty above. I secured my ropes around a mooring post normally used to hold an oil tanker, while my buddy kept watch. Operating only by torchlight, I climbed on to a huge buffer plate – used to protect the jetty from ships as they dock – and abseiled back over the edge into darkness.

My job was to put my body between the oil tanker and its docking berth, keeping the cargo stuck at sea for as long as possible. With adrenaline now wearing off and anxiety starting to set in, news finally came in that we had forced the tanker to turn around. No ships would be docking that night. No diesel would be unloaded and no money generated from the sale of fuel. I was able to relax. With only water below me, I set up my 'portaledge', a suspended tent, and made myself comfortable inside.

As the moon reappeared in the small hours of the morning, I reached into my bag and pulled out a banner – "Fossil Fuels War" – and held it ready for sunrise. For a day we were able to prevent the vessel from unloading tens of millions of pounds worth of diesel into the UK market. Globally, oil and

gas sales make up 40% of the federal income of the Russian state, and this directly finances the war crimes Putin is committing in Ukraine.

Last month I, along with nine other people, were put on trial. We were charged with aggravated trespass; of disrupting a lawful activity. The court ruled we were not guilty. It was described as a "seismic verdict" for UK energy policy. As further evidence of war crimes in Ukraine have been uncovered, our actions are further vindicated.

Thirteen years ago I attended COP15, the UN climate change conference in Copenhagen. At the fringes of the conference, scientists, engineers and campaigners presented solutions to decarbonise economies and decentralise energy networks. If governments had listened then, we might have prevented the crisis we find ourselves in today. Had we acted earlier to build vast amounts of onshore wind, put solar on all new-builds, insulate homes and install heat pumps, then we might have been able to halt oil imports from Russia at the start of the war. And I could have spent that April night safe at home.

The best time to break our deadly reliance on fossil fuels was decades ago, when scientists and campaigners first raised the alarm. The second best time is now.

Benji lives on a boat moored near Enfield Lock. This article first appeared as a blog on the Greenpeace UK website.

## Using toxic language around immigration helps no-one

The wife of an Albanian resident on why the language used around immigration needs to change

BY PAIGE BALLMI

As I scroll through TikTok, it pains me to see video after video of TV presenters, journalists and politicians branding migrants as criminals. It pains me even more to see videos of people justifying their existence in this country, after Albanians became the latest minority group to be used by the government as scapegoats.

Home Secretary Suella Braverman stood in parliament and said that boats crossing the English Channel with Albanian citizens on board amounted to an "invasion" of the UK. This is despite the Home Office insisting that each and every case is considered on its own merits.

The use of this language by a senior government minister is extremely toxic and, with the power of the repetition, this is no doubt going to lead to a rise in hate crime towards Albanian citizens. Using words like "invasion" when talking about humans, who have hopes and dreams for a better life just like you and I, doesn't help anyone in this situation.

Whether these are genuine refugees or not; it's not for us to decide. The good migrant/bad migrant argument has only ever proved to be unhelpful,

and takes the focus away from the main concern of creating a safe route for all migrants and a fair asylum system.

Why must we talk of humans this way? We must recognise that the tone of this language is going to have a tremendous impact on the way migrants are treated in this country. It was only a few years ago that my Albanian husband said to me he had never experienced racism until he came to the UK – it was then I realised we are not the tolerant nation we claim to be.

It's important to remember that a dinghy full of Iranian citizens fleeing conflict, and a dinghy full of Albanian citizens fleeing whatever – be it an LGBTQ hate crime, be it poverty, be it a blood feud or be it domestic violence (all of which are very prevalent in Albania) – all these people are processed the same, and most are given asylum.

The migration system in this country has been broken in this country for a very long time, despite the answers being right under the noses of policy makers and politicians for years on end now. It's time we acknowledge that people move, and always have done. We must stop letting this hateful conduct create a divide and come together to create the welcoming nation we want to be.



Tom and Paige Ballmi

Lee Chamberlain was elected to represent Winchmore Hill at May's local election, having previously represented Bush Hill Park



## Working hard for Winchmore Hill

*Conservative Lee Chamberlain finds fresh problems at the civic centre after returning from a four-year absence*

I have always held that a councillor's job is to represent residents in the council, not the council in the ward. It is why I stood to remove low-traffic neighbourhoods (LTNs), restore weekly bin collections and protect the Green Belt.

I was doubly fortunate to be elected in May for Winchmore Hill ward, alongside the industrious Maria Alexandrou as my ward colleague. We make a good team, supporting each other with residents' enquiries, and Winchmore Hill is a fantastic ward with some interesting features within its boundaries. It holds the local gem that is The Green; Grovelands Park with its varied landscape and facilities; Broadwalk with its notable homes; not to mention a number of excellent hostelrys and restaurants that make it a great place for people to live and work.

As an experienced former councillor and past mayor, returning after a four-year break brings Enfield Council as a body into fresh perspective. Sadly, while some things have changed,

little has changed for the better. Full council meetings are more frequently dominated by dog-whistle motions brought forward by the controlling Labour party group. These motions, with little relevance to actual council business, often result in serious business passing without discussion thanks to the 'guillotine' that restricts debate.

Councillors are now required to use a barely-usable online reporting system for resident case work. This poorly-designed system replaced a simpler, more effective system of direct emails to council officers. We have forced some improvements, but it is still a hindrance, as yet offering no discernable benefits. To top it off, the IT systems have gone backwards, forcing many of us to revert back to using paper documents after years of being paperless. Nothing we can't handle, but a shocking state of affairs.

The good news is that the new, larger Conservative group is reinvigorated, with our recent opposition priority

business pulling the lacklustre Local Plan out of the long grass. While the current draft plan is utterly unacceptable, its delayed arrival (originally due 2019!) has left Enfield totally vulnerable to bad development being pushed through. Not that the administration needs any help in that regard, with Labour members of the planning committee recently voting to approve a 30-storey tower block that will only have a single stairwell for escape – despite concerns being raised by residents and Conservative councillors like myself. As an opposition we have to shine a light on these problems, so they cannot be ignored, and fight to change things for the better.

We hold regular ward forums in Winchmore Hill. We normally meet in the evening at Friendship House and future dates will be advertised on the council website.

Lee Chamberlain represents Winchmore Hill ward alongside Maria Alexandrou (both Conservative). If you are a ward resident you can get in touch:  
Email [cllr.lee.chamberlain@enfield.gov.uk](mailto:cllr.lee.chamberlain@enfield.gov.uk)

***"Sadly, while some things have changed, little has changed for the better"***

# LETTERS

## Send us your letters

Got an opinion on something in Enfield? We accept letters of up to 150 words from people and organisations in the borough. Email [EnfieldDispatch@socialspider.com](mailto:EnfieldDispatch@socialspider.com) before the next deadline on **Wednesday 14th December**.

## Nuts about Scouts

*Dear Enfield Dispatch*

A year ago, we opened our very first squirrels Scouts drey. For the first time, children aged four and five became part of the Scouts movement. We prioritised areas hardest hit by the pandemic, offering hope, skills and friendship to so many families. With a mix of outdoor play, storytelling and team games, we knew we could make a massive difference to young lives when it mattered most.

Here in Enfield, the new squirrels group is going from strength to strength, helping young people learn skills for life. But it's not just young people we're helping. We're supporting communities too. The positive impact is just amazing to see. Parents and carers who volunteer are also having fun, expanding their local network and gaining leadership skills. Meanwhile their children are growing in confidence and making new friends.

Volunteers are realising it's as good for them, as it is for others. So why not think about volunteering for squirrels? If you can give a little time, we'll provide the tea and cake. Happy birthday, squirrels, and thank you to our volunteers too. You're an inspiration.

Bear Grylls OBE  
Chief Scout

## Best chips

*Dear Enfield Dispatch*

In my humble opinion there are only two fish and chip shops in Enfield that are excellent and definitely worth a visit for the traditional Friday night supper. Both establishments are named George's Fish Bar, one in Enfield Town and the other in Bush Hill Park, but under different owners and not to be confused. My understanding is that both of them use Cyprus potatoes (the king of spuds) and crispy batter to perfection. The only difference is that George's in Enfield Town serves the food in a box, while George's in Bush Hill Park uses wrapping paper and has larger portions. Irrespective, both are lush!

Chris Joannides  
Conservative councillor, Southgate

## Still time to halt incinerator

*Dear Enfield Dispatch*

Despite the building works having commenced at the Edmonton incinerator site, there is still time to stop this disastrous project. But it can only come through the councillors on the board of North London Waste Authority (NLWA) agreeing the compromise plan, which as follows:

1) Continuing to repair and make safer the existing incinerator up to 2026; 2) Increasing effective recycling, including mechanical biological treatment; 3) Recognising plastic taxes and deposit return schemes, plus mandatory food waste collection for 2025/6; 4) Challenging the overpriced and oversized construction contract with Acciona for energy-from-waste [via incineration], which is outdated and unnecessary and cannot continue to be claimed as 'net zero' in any sense.

Make no mistake, when burned for energy, plastic is a fossil fuel made from oil, and will never be carbon neutral. It is up to councillors now to address these issues, to challenge NLWA with an independent assessment of the whole project.

Malcolm Stow  
Stop the Edmonton Incinerator

## Whitewebbs lies

*Dear Enfield Dispatch*

It is important to note that Enfield Council justified the decision to close Whitewebbs Park Golf Course by claiming closure would save £200,000 annually. But this was a lie. Analysis of an internal income/expenditure report shows it contains huge notional costs – £120,000 from previous periods; £440,000 from central costs unrelated to Whitewebbs; £470,000 from a totally fictitious charge on land value labelled "depreciation". After taking into account the £100,000 in business rates retained by the council and contribution to park maintenance, the golf course was in fact slightly better than break-even for the council. In addition, the accounts show they were operating with obsolete dilapidated equipment which, if it had all been replaced before 2014, would have seen the course operate at a profit.

Michael Lord  
Arnos Grove

# Topping out

*Neil Littman struggles to find his spud at a new Turkish eatery in Winchmore Hill*

**A**t a time of economic uncertainty it's a courageous move opening a new restaurant.

Pot & Bun on The Green in Winchmore Hill recently opened on a site previously occupied by Samdan Meze & Grill and is run by the same owners. Their new offer – or is it a concept? – is kumpir and kumru, which they describe as Turkish street food.

Their menu includes Turkish salads, loaded fries, kumpir (baked potatoes with toppings) and kumru (deli sandwiches) plus a wide range of desserts including waffles, crepes, cakes, milkshakes, smoothies and ice creams. They are also licensed and serve a small range of beers and wines.

I was initially confused on arrival at Pot & Bun as to whether there was counter or table service, until I spotted a sign – obscured by the queue of takeaway customers – saying “place your order here”. It's been very busy on the two occasions I have eaten there and it's already a popular spot

after only a few weeks since opening.

Although I think you tamper with baked potatoes at your peril (I'd rather they be kept simple because of how filling they are), I ordered the kumpir. The spuds are large and baked in a special oven, which can be viewed behind the counter, and mine came topped with strips of



Kumpir with an assortment of toppings

fried chicken in a crumb coating. It seemed the best choice out of the combinations on offer but, by the time I had selected my toppings, my spud was drowning in a sea of dressing and cacik (yoghurt dip) with grated cucumber, courgette salad, sweetcorn, plus even more yoghurt! The baked potato disappeared under the weight of so many ingredients and I couldn't finish it.

Undeterred, I went back to Pot & Bun a few days later, as I felt it was worth a second chance. This time I ordered one of their salads topped with grilled salmon on a bed of mixed leaves and chose six toppings from a selection of over 20, including pickled cucumber, sweetcorn, coleslaw, and red cabbage. It was an altogether more successful mix of ingredients and, this time, I suffered no overload of carbs! The salads and deli sandwiches look the most inviting items on the menu and the presentation is good, with dishes served in traditional Turkish kadai copper bowls.

The kumpir is quite expensive at £11 and the salads are £9.5–£12 (without extras), while kumru are £10–13 and include options such as steak or vegetarian.

Pot & Bun can be found at 32–34 The Green, Winchmore Hill N21 1AY and is open daily 10am–7pm (until 8pm on Fridays and Saturdays): Call 020 3409 0699



Salad with grilled salmon

Advertisement

**EDMONTON GREEN**

**ENFIELD COMMUNITY HEROES**  
Sponsored by Edmonton Green Shopping Centre

## The A-Team of Palmers Green

*Dana Burstow is one of the co-founders of Palmers Green Action Team*

**F**our years ago a small group of Palmers Green residents got together and decided to do something to improve their local high street.

Dana Burstow was one of those who saw the great potential for Green Lanes to thrive. She told the *Dispatch*: “We really just started by saying, although there were lots of people moaning about the high street, we thought there was a strong community and lots of good shops and we should shout about it.”

Over the last four years since it was launched, Palmers Green Action Team (PGAT) boasts a long list of successful interventions that collectively have made a big difference. They include installing tree planters on the pavement, creating new flowerbeds and maintaining



Palmers Green Action Team volunteers, from left; Dana, Liz, Claude, Mati and Cara

existing ones, commissioning artworks in and around Palmers Green Station, and winning council funding to create a poetry ‘sculpture’ in tribute to the late Stevie Smith. Ongoing projects include a campaign to bring a cinema to Green Lanes and the launching of a market and events space at the newly-created Devonshire

Square (the first market is scheduled for Saturday, 3rd December, 10am–4pm).

Dana, a lawyer by day, says: “It takes a lot of effort and almost everyone involved is working full-time so we are doing it in the ‘midnight oil’ hours. But it's amazing what you can do with volunteers.

“The high street is the heart of the community and from an economic perspective that is where we can support businesses and bring more people to the area.

“Although we have some big units that are empty, most of the smaller units do get taken quite quickly and we have lower vacancy rates than other areas. We have got several fantastic independent cafes [...] there is a real diversity of food as well, we have got nine or ten different cuisines on the high street which is really great to see.

“We just do as much as we can to support the community and the shopkeepers to make it a successful high street. People care about their local environment and can see how they can make a difference. The council doesn't have the capacity to manage it so if we can use volunteer power we can make Palmers Green a better place.”

Dana is one of four founders of PGAT, along with Claude Whyte, Christine Ellssa and Justine Ramdarshan.

For more information about Palmers Green Action Team: Visit [palmersgreenactionteam.org](http://palmersgreenactionteam.org)

### Nominate your heroes

Dispatch readers are welcome to nominate their own ‘Enfield Community Hero’ – someone who you think has gone above and beyond to help support the local community. Simply email your nomination to [EnfieldDispatch@socialspider.com](mailto:EnfieldDispatch@socialspider.com)

Advertisement

PLATINUM  
ProductionsMILLFIELD  
THEATREEVL  
PRODUCTIONS

A traditional pantomime with a modern twist!



SCAN ME!



*AND THE SEVEN SUPERHEROES*  
6th - 30th December

Box Office: 020 8807 6680 | Online: [www.millfieldtheatre.co.uk](http://www.millfieldtheatre.co.uk)  
Millfield Theatre, Silver Street, Edmonton, London N18 1PJ

ENFIELD  
Council



Some of the photography displays now available to view on Platform 1 of Enfield Chase Station



## Enfield Camera Club's renewed focus

Chris Silwood introduces a new photography exhibition at Enfield Chase Station

**E**nfield Camera Club was established in 1950 and meets every Thursday at Trinity Church in Enfield Town.

Until the onset of the pandemic nearly three years ago, the club put on exhibitions every year at the Dugdale Centre in November. This year marks the return of our annual showcase but, because of the ongoing development works at the Dugdale, it was not possible to host it there.

Instead, thanks to a fortuitous chance conversation with the owner of Leo's Coffee Shop at Enfield Chase Station, I was put in touch with Dave Cockle of The Enfield Society. Dave very kindly agreed to facilitate a club exhibition in the waiting room on the platform. This was launched last month and has received great feedback so far, not least because it provides visual stimulation while people are bored waiting for their train!

With regards to Enfield Camera Club itself, we are affiliated to

The Photographic Alliance of Great Britain through the East Anglian Federation (EAF). At the time of the transition from traditional processing methods to digital photography, the club was given a National Lottery grant award of £3,000 which allowed us to purchase new hardware and software.

Our club members range from beginners to very advanced and experienced professional photographers, several of whom have been members for over 25 years.

***"Our club members range from beginners to very advanced and experienced professional photographers"***

Our meetings are light-hearted and friendly with plenty of time for discussion. The workshops are particularly good fun.

It goes without saying that new members are welcome, with typical introductory conversations

ranging from camera ownership to software used, plus whether members are coming to the pub afterwards! We attempt to stick to the tried and trusted programme of guest presentations, interspersed with digital and print competitions. No 'weighting' as such applies to the type of camera used, with members still employing equipment ranging from basic compacts to SLR, 4/3 mirrorless and rangefinders. Aside from that, the club competes in a range of local competitions on a regular basis, as well as the annual EAF inter-club digital and print championships.

Our events secretary organises a wide range of eclectic destinations for photography trips, such as The English School of Falconry, Woburn Safari Park, Kew Gardens, Southwark Cathedral and summer evening walks around the Lea Valley and elsewhere.

Enfield Camera Club meets every Thursday evening, 8-10pm, aside from July and August. Membership costs £45 per year (visitors can pay £1). For more information: Email [enfieldcameraclub@gmail.com](mailto:enfieldcameraclub@gmail.com) Visit [enfieldcameraclub.co.uk](http://enfieldcameraclub.co.uk)

## Love lights the way

Lucy McGinn from The Nightingale Cancer Support Centre on how local people can make a dedication to a loved one they'll be thinking of this Christmas

**A**t The Nightingale Cancer Support Centre, we know that loved ones are always in your thoughts and always in your heart. With our 'Lights of Love' event you can celebrate that love and those who are most important to you.

Christmas is a very special time of year, bringing joy to many. It can also be especially difficult if a family member or friend is going through a hard time or is no longer with us. Lights of Love bridges that gap.

Whether your loved one is familiar with The Nightingale or not, young or old, local or abroad; all can be celebrated with a Lights of Love dedication using fond memories, words of love, and hopes for the future.

The community come together by sharing the love that lights up their life and those feeling lost or far from their loved one know they are not alone. In making a dedication, you will help our clients receive the vital support they desperately need when face with a cancer diagnosis.

We will be holding a dedication ceremony from 6.30pm on Wednesday, 7th December outside the Microsoft building in Genotin Road. It will be an opportunity for the community to join together and celebrate their loved ones.

We invite you to hear readings, beautiful songs performed by St

Anne's High School Gospel Choir and St George's Primary School Choir and be part of the official switch-on of Microsoft's Christmas tree. The ceremony will finish inside the building with mulled wine and mince pies.

The Christmas tree lighting symbolises our theme that love lights up everything. We gather together in love, memories and joy and take time to recognise all the dedications made, what they mean to everyone and how they help people in need of cancer support.

The Nightingale is a local, independent charity serving people living in or receiving treatment in Enfield. We provide emotional, physical and practical support services, groups and activities to all those who may be affected by a cancer, including those diagnosed with cancer as well as their family, friends, colleagues and loved ones.

Gill Paschalis, from Microsoft Enfield, says: "Microsoft has a long-standing relationship with The Nightingale and we are delighted that we are able to support them again this year. While the Lights of Love ceremony can be difficult for some, it is an important event in our community and for many people, marks the start of Christmas."

**Make a Lights of Love dedication:**

Call 020 8366 9674

Visit [nightingalesupport.org.uk/lightsloflove](http://nightingalesupport.org.uk/lightsloflove)



A Christmas tree lights switch-on is taking place as part of The Nightingale's 'Lights of Love' ceremony at Microsoft in Enfield Town on 7th December

Youngsters from Young Talent Academy celebrate the launch of their new studio in Chase Side



# A new home for Enfield's young talent

## A modern hub for dance, drama and music has opened in Chase Side

BY JAMES CRACKNELL

A new studio space for young singers, dancers and actors has opened in Enfield – in a former plumbing warehouse.

Young Talent Academy (YTA), which runs a series of evening and weekend classes for local youngsters with a passion for performing, had been searching for a new permanent home ever since leaving the Dugdale Centre nearly three years ago.

YTA rented space at Enfield Grammar School after the pandemic but has now moved into a new purpose-built space containing four studios of different sizes which are also available for other groups in Enfield to hire.

The building in Chase Side was left derelict after previously being used as a warehouse by a plumbing firm. But after spotting its potential, YTA founder Regan O'Mahony spent the last six months renovating the space, even getting stuck in with painting.

Regan told the *Dispatch*: "We have

completely renovated the whole thing into a community arts hub. We had new ceilings and walls put in and we have turned it into four studios.

"There has always been a massive shortage of community spaces in Enfield so we have had lots of interest in it since we opened [in October]."

The building is accessible, with a disabled toilet and ramps, and also has a kitchen. The four studios give YTA a lot more flexibility for accommodating the growing number of talented youngsters on its books. Classes include ballet, street dance, lyrical dance and drama, while the building is also now home to the acclaimed Young Notes Choir,

whose singers recently starred in a TV advert.

Regan said the conversion of the building into a modern arts studio was a big challenge, with no grant funding or bank loans being made available, forcing her to recruit friends and family to help with the mammoth task.

"We couldn't have done it without the help of friends and family," says Regan. "I painted the whole of the front myself and we also had some parents help us. It was all hands on deck!

"It was very stressful but we are hoping we can get some financial help going forward."

As a community interest company, YTA offers scholarships and bursaries for talented children who otherwise

wouldn't be able to sign up. YTA is also hosting a Christmas fair at its studios on Sunday, 27th November, featuring stalls, a raffle and performances.

**For more information about Young Talent Academy and booking rooms at Studio YTA:**

**Email** [info@youngtalentacademy.co.uk](mailto:info@youngtalentacademy.co.uk)  
**Visit** [youngtalentacademy.co.uk](http://youngtalentacademy.co.uk)



Young Talent Academy founder Regan O'Mahony outside newly-opened Studio YTA

# LISTINGS

## Submit your listing

We can include low-cost community events taking place in Enfield. For next month's listings, email the details of your event to [enfelddispatch@socialspider.com](mailto:enfelddispatch@socialspider.com) by **Wednesday 14th December**.

## FESTIVAL

### Fore Street Night Festival

Thursday 1st Dec, 4.30pm–11.30pm  
Fore Street Library and other venues

We are hosting a variety of fun activities along the high street for all to enjoy. Visitors are invited into spaces and shops on Fore Street for some creative, entertaining and thought-provoking experiences. There will be live music, performances, artwork, workshops, food and drink, a silent disco, reindeer, town crier and more!

**Free entry**

**Visit** [forestreetforall.com/events](http://forestreetforall.com/events)

## BRUNCH

### Free Sunday Brunch

Sunday 11th Dec, 10am–12pm  
CRM Agape House, Raynham Primary School (early years building), Raynham Terrace, Edmonton N18 2JQ

A free Sunday brunch, open to everyone with no restrictions. We provide a hot meal, drinks and sandwiches.

**Free entry**

**Call** 07951 881 991

**Visit** [crmagapehouse.org.uk](http://crmagapehouse.org.uk)

## ART

### Seasons Art Class

Thursday 15th Dec, 2pm–5pm  
Schindler Hall, 75 Chase Road, Southgate N14 4AY

Art class exhibition. Absolute beginners to intermediate. Come support and enjoy the art. Exhibits for sale at artist discretion.

**Free admission**

**Email** [seasonsartclasscockfosters@gmail.com](mailto:seasonsartclasscockfosters@gmail.com)

## ADVICE

### Heat and Eat

Friday 16th Dec, 2pm–4pm  
Brigadier Hall, Cedar Road, Enfield EN2 0NL

Enfield Over 50s Forum is hosting a series of 'Heat and Eat' sessions this winter. We can give advice on benefits, bills, grants, staying warm, foodbanks, and will also be hosting a free raffle. Over 75s are invited to stay for the second hour for a free hot meal and/or coat or duvet.

**Free entry**

**Visit** [enfieldover50sforum.org.uk](http://enfieldover50sforum.org.uk)

## CONCERT

### Once Upon a Christmas Time

Saturday 17th Dec, 7.30pm  
St Andrew's Southgate, Chase Side, Southgate N14 5PP

Aurora Choir is presenting 'Once Upon a Christmas Time' with a programme of seasonal choral and instrumental music.

**Tickets £12**

**Email** [AuroraChoirLondon@gmail.com](mailto:AuroraChoirLondon@gmail.com)

**Facebook** /people/Aurora-Choir/100082978970336/

**Text** 07421 220 754

## GROTTO

### Santa's Grotto

Saturday and Sunday 17th and 18th Dec, 10am–6pm  
Myddelton House Gardens, Bulls Cross, Enfield EN2 9HG

Families will meet Santa in his enchanting grotto for an interactive session. Children will be presented with a gift appropriate for their age. Visitors can also explore Myddelton House Gardens where they'll be welcomed by mischievous elves who are up to no good!

**Tickets £20**

**Visit** [tickettailor.com/events/jttevents/775283](http://tickettailor.com/events/jttevents/775283)

## EXHIBITION

### Welcome to Our World

Throughout Dec, Mon–Thu 5pm–11pm, Fri 3pm–11.30pm, Sat 12pm–11.30pm, Sun 12pm–8pm  
The Southgate Club, 17 Chase Side N14 5BP

An art exhibition celebrating local drag queens, a result of a collaboration between Moira Stansfield and drag artist Tony Fran, better known as his creation, Fantasy.

**Free entry**

**Visit** [southgateclub.com](http://southgateclub.com)

## BRIDGE

### Chicago Bridge

Every Friday, 10am–12pm (Enfield) and every Tuesday, 2pm–4pm (Cockfosters)  
Mary Magdalen Church, Windmill Hill (Fridays) and Vita Pax Catholic Church, Bramley Road (Tuesdays)

**Free entry**

**Call** 020 8245 2587

## AROUND THE BOROUGH

### ANGEL EDMONTON

## Major estate redevelopment plans submitted

BY SIMON ALLIN, LOCAL DEMOCRACY REPORTER

ENFIELD COUNCIL HAS SUBMITTED plans for the £770million redevelopment of the Joyce Avenue and Snells Park estates.

Expected to take 20 years to complete, the proposed scheme would see the existing 795 homes on the estates, which date back to the 1950s and 1960s, knocked down to make way for nearly 2,000 new homes. It comes after residents who took part in a ballot last year voted in favour of redevelopment.

The tallest blocks on the regenerated estates would rise to up to 19 storeys – four storeys higher than the current maximum heights. Planning documents indicate the scheme would provide 619 homes for social rent, 218 for shared ownership, and 125 available through a shared equity scheme. The remaining 1,021 properties would be for private sale.

Around half of the homes on the existing estates are for social rent, with the rest occupied by leaseholders.



How the redeveloped Joyce and Snells estates would look from Fore Street. Credit: Enfield Council

A detailed application for 530 homes has been submitted alongside outline proposals for the rest of the site. Further plans include the replacement of Boundary Hall; a new multi-use space including a library, community facility and creative space; more green spaces; and a link across Sterling Way to improve access from nearby Silver Street Station.

According to previous reports produced by the council, if the regeneration does not go ahead

the existing homes would need a “comprehensive refurbishment” to make them safe for the next 30 years. This would require residents to be moved elsewhere to enable work to take place.

The council says that if the scheme is approved, existing secure tenants and resident leaseholders will be offered a home on the redeveloped estate. It plans to offer new homes via a single move, with overcrowded council tenants entitled to a larger home more suitable for their needs.

Council leader Nesil Caliskan said: “This exciting programme provides a once-in-a-generation opportunity to deliver on the mandate given to the council by residents. The proposal will see more council-owned housing delivered for existing residents as well as those in desperate need on the housing register.

“The scheme will be transformative for people living on the estate.”

For more information:  
Visit [joyceandsnells.co.uk](http://joyceandsnells.co.uk)

### ENFIELD TOWN

## Fresh hope for community centre

BY SIMON ALLIN, LOCAL DEMOCRACY REPORTER

THE OWNER OF ST PAUL'S CENTRE has accepted an offer that it says would preserve its current public use as a community centre.

The building has been open to the public for more than 40 years but was put on the market for £2.2million after its previous management group, Enfield Town and Forty Hill Churches Joint Trust, decided to close it to the public because it was “no longer able to run and maintain the building”.

The United Reformed Church (URC), which owns the building, subsequently confirmed it had been put up for sale. Community groups using the centre were initially given until the end of October to find alternative premises, but can now remain in the building



St Paul's Centre in Church Street until the end of the year.

Reverend George Watt, moderator of the URC's Thames North Synod, said: “Following the announcement of the closure of St Paul's Centre in Church Street in August, the United Reformed Church Thames North Synod can confirm that it has decided to sell the property and has accepted an offer which is for existing community use as a church and community centre. Solicitors will be instructed on the sale shortly.”

### SOUTHBURY

## B&Q on the move

B&Q IS RELOCATING AHEAD OF A major residential development.

The hardware and gardening superstore at Colosseum Retail Park is moving just a few hundred metres away to the adjacent Enfield Retail Park, taking the place of a former Toys'R'Us outlet.

Although the new B&Q will be smaller, no jobs are currently expected to be lost in the move taking place on 9th December. A company spokesperson said: “We are moving our Enfield store this winter to a new location in Enfield Retail Park, less than half-a-mile from our current store.

“We look forward to opening our

doors and continuing to support the people of Enfield and the surrounding area with all their home improvement needs.”

The move is the first indication that Colosseum Retail Park's planned redevelopment is now making progress, more than two years since it was controversially granted planning permission. A partnership between American firm Blackrock and London-based NEAT Developments won outline approval for 1,800 homes on the site in September 2020, at the same time as gaining permission for detailed plans of 444 homes in the scheme's first phase, which would rise to 29 storeys tall.

### WHITEWEBBS

## Campaigners threaten council with legal action

BY JAMES CRACKNELL

LOCAL CAMPAIGNERS HOPING to prevent parts of Whitewebbs Park from being leased to Tottenham Hotspur FC have threatened Enfield Council with legal action.

The Friends of Whitewebbs Park and Enfield Road Watch groups – together with the London branch of the Campaign to Protect Rural England (CPRE) – wrote to the local authority saying they believe the 25-year lease awarded to the Premier League club last year is “unlawful” because the proposals involve the enclosure of public open land.

Tottenham Hotspur plans to turn the northern half of the now-closed Whitewebbs Park Golf Course into a football academy for women and girls, while keeping the southern half as open parkland. The golf course was closed by the council last year, citing high maintenance

costs, with the decision to award the lease to Spurs being announced a few months later.

In a letter to the council's senior property lawyer, Sean Wilkinson from the friends group, Carol Fisk from Enfield Road Watch and Alice Roberts from CPRE London wrote: “Although the proposals create some areas of public access [...] they clearly remove part of the park from public recreational use.

“It will be operated by THFC, a for-profit commercial organisation, with the aim of training elite professional football players.

“Neither the main use of the land nor the level or type of public access restrictions inherent in that use are lawful under the 1967 Order. We consider the proposals to be unlawful on this basis.”

The campaigners argue that Enfield Council “is in the role of trustee or custodian of the land”

and “must approach decisions regarding its use accordingly” and add in the letter that while the Greater London Parks and Open Spaces Order 1967 specifically provides a golf course as an example of a “public recreational facility”, the proposal from Spurs to enclose part of the golf course for use as a football academy “unlawfully restricts public access to parts of the park”.

Sean Wilkinson added: “The proposed sports academy will primarily be run for the purposes of contributing to the commercial success of the club. It will no longer be a public park. It's that simple.”

Tottenham Hotspur did not respond to a request for comment. A council spokesperson said: “The council has and will continue to follow all legal requirements in relation to the proposed leasing of land at Whitewebbs to Tottenham Hotspur Limited.”

### EDMONTON GREEN

## Church appeal for new building

AN EDMONTON CHURCH HAS launched a £2m fundraising campaign for a new building that will provide a range of community uses.

Edmonton Methodist Church plans to rebuild its existing Fore Street church to create a “highly

versatile place of worship” which supports a wider mix of community uses; from youth facilities to support for the homeless.

To donate to the appeal:  
Visit [gofundme.com/f/b9hutd-2-million-2-million-footsteps](http://gofundme.com/f/b9hutd-2-million-2-million-footsteps)



# Surf and no turf

## Golf course set to close if £40m surfing facility gets go-ahead

Golfers in the east of the borough fear a low-cost golf course would be washed away by proposals to create a “slice of the ocean in Enfield”. Lee Valley Regional Park Authority (LVRPA) announced four years ago that it planned to open a £40million “surfing destination” at its Lee Valley Leisure Complex in Pickett’s Lock, but has now confirmed that the plans would involve the permanent closure of both Lee Valley Golf Course and Lee Valley Camping and Caravan Park.

Billy Sheridan, a former captain of Leaside Golf Club who still uses

the course regularly, said that golfers had initially been told that only nine of the 18 holes would be affected by the plans, but has since learned that the entire course would be forced to close. Lee Valley is a low-cost golf course and one of the cheapest remaining in the borough after the closure of Whitewebbs Park Golf Course last year. Other courses in the borough typically charge around three or four times as much for an annual membership, while it is also the only course in Enfield east of the A10. Billy told the *Dispatch*: “I have been playing for 25 years and all my friends play here – what are we supposed to do? It is an essential part of the community.

“Leaside is the cheapest golf club in the area. A friend of mine is a member at Bush Hill Park but it is around £1,800 per year – Leaside is £420 per year.” The closure of the camping site would also be a big loss, Billy said. “It is one of the nearest caravan parks to central London. It is important to the area.”

No planning application has yet been submitted for the surfing facility. A web page explains that LVRPA “is working with inland surfing specialists, The Wave, to develop a planning application for a world-class surfing destination”. It further says: “The £40m project would enhance around 100 acres of land in Lee Valley Regional Park and could make London the first capital city in the world to offer

an inland surfing destination.” Asked what the proposal would mean for the golf course and camping site if it went ahead, an LVRPA spokesperson said: “The destination, called The Wave London, would reinvigorate land adjacent to the Lee Valley Athletics Centre in Edmonton and bring both visitors and jobs to the area.

“The Wave London carried out a set of first phase public engagement sessions in July, which were well received and are now using the information gained at these to further develop their plans.

“Lee Valley Golf Course and Lee Valley Camping and Caravan Park are on the site of the proposed project and, if the scheme goes ahead, both will close. The site is designated as Green Belt and has been used for leisure since the 1970s.

“The project, which is still at an early stage, would create a slice of the ocean in Enfield, with a new purpose-built surfing lake on the southern end of the golf course, away from the existing lake. It would be the centrepiece of an exciting reinvigoration of land adjacent to the Lee Valley Athletics Centre in Edmonton.

“It is proposed to be a stunning new regional leisure hub, bringing wellbeing, fitness, sport, outdoor activities and the positive health benefits of water and waves, to millions of people, along with many new jobs.”

For information about The Wave: Visit [leevalleypark.org.uk/the-wave](http://leevalleypark.org.uk/the-wave)

# Former Championship star signs for Town

Andrew Warshaw speaks to former Ipswich and Wimbledon midfielder Anthony Wordsworth

In recent years more and more professional footballers have made the switch to television and radio in their retirement from playing. Now Enfield Town has its own would-be Gary Lineker in the form of new signing Anthony Wordsworth. Anthony recently graduated with a first in sports journalism from Staffordshire University after a three-year course which he combined with playing in the lower leagues.

He began his career at Colchester United, before playing for the likes of Ipswich Town, Southend United and AFC Wimbledon. Anthony also brings a wealth of experience to Enfield as the club embarks on a busy December schedule.

Anthony was able to complete his degree thanks to financial assistance from the Professional Footballers Association, which funded a large chunk of the course. “I’ve always been interested in journalism,” Anthony told the *Dispatch*. “It’s something I’d really like to do after football.

“When I was at Wimbledon, I became really friendly with the media team there. I probably spent more time in their office than I did hanging around with the lads. I used to come up with ideas and they encouraged me to get into it when I stopped playing. I’d ultimately like to be a presenter.”

To keep his hand in, Anthony co-commentates for Wimbledon whenever he can, provided it doesn’t clash with his commitments for Enfield.

Despite having represented a plethora of league teams, Anthony – who counts England and Arsenal goalkeeper Aaron Ramsdale as among his best friends – was pleasantly surprised at what he found when he arrived at Enfield, on-and-off the pitch.

“I’m not just saying this but I can tell you that Enfield Town is a very well-run football club,” he says. “I noticed that from the first second I walked into the club. Things like having their own kit man and a physio. Everything is done properly, it’s like a professional club.”

It helps that Anthony was already



friends with fellow Town midfielder Sam Youngs and former club favourite Lee Chappell. He also knew first-team coach Ian Hart from when both were at Southend, although he had no intention of joining Enfield until he actually saw the set-up.

“Basically, I just wanted to get fit and asked if I could come in and train. Initially I had no interest in signing but I was so impressed with how things were done that when it was mentioned, I said yes straight away.”

At 33, Anthony can play as an attacking or defensive midfielder and brings invaluable know-how to the club, having worked with established coaches such as Mick McCarthy, Paul Lambert and Aidy Boothroyd.

“We’ve got such a good squad at Enfield. The boys are such a good bunch and the coaching staff are superb. To be honest, I don’t see that much difference with the professional game in terms of the level of detail. At this level, I don’t think you can get a better coaching set-up.”

And his hopes for the season? “That I can bring the experience I had at a higher level. But I also want to win the league. I’m not here for a jolly-up.”

Advertisement

**LICENSING ACT 2003**  
**Notice Of Application For**  
**A New Premises Licence**

Notice is hereby given that **Ayse Durna Ulger** has applied to the Licensing Authority of London Borough of Enfield for a Premises Licence to permit:

- The selling and consumption of alcohol **ON the premises for the premises Serra situated at 6 Central Parade, Green Street, Enfield EN3 7HG.**

The public register where applications are available to be viewed by members of the public can be accessed online by visiting <https://new.enfield.gov.uk/services/business-and-licensing/> and following the link to the Licensing Register. Email [licensing@enfield.gov.uk](mailto:licensing@enfield.gov.uk) to request a copy of the application within 28 days from the date of this notice. Any person wishing to submit relevant representations concerning this application must give notice by emailing [licensing@enfield.gov.uk](mailto:licensing@enfield.gov.uk), giving in detail the grounds of the representation no later than: **20/12/2022.**

Representations received by post will not be accepted. Representations must include your full name and address. Representations must relate to one or more of the four Licensing Objectives: the prevention of crime and disorder, public safety, the prevention of public nuisance and the protection of children from harm.

It is an offence, under section 158 of the Licensing Act 2003, to knowingly or recklessly make a false statement in connection with an application for a premises licence. A person guilty of an offence is liable on summary conviction to a fine not exceeding level five on the standard scale.

Advertisement

**FACE FRONT**  
Theatre Company

**Volunteer with us**  
Support ground-breaking theatre that changes lives.  
Email: [hello@facefront.org](mailto:hello@facefront.org)  
Registered Charity No.1116506

# WE NEED YOUR HELP



## WE ARE LOOKING FOR PEOPLE IN ENFIELD WHO CAN HELP SUPPORT US TO PRODUCE MORE HIGH-QUALITY LOCAL JOURNALISM IN ENFIELD DISPATCH

- We have NO shareholders
- We have NO wealthy backers
- We are run by a small but dedicated team as part of a not-for-profit community interest company
- We hold authority to account, expose scandals, highlight inequality, promote good causes, and provide a platform for local people
- Every penny of income from Enfield Dispatch helps us deliver more journalism in Enfield
- The paper costs nearly £6,000 per month to produce and distribute, but monthly income is under £5,000 currently
- We currently have 155 supporters who contribute around 16% of our income, but we need more!

Can you help us? Our membership scheme has many different options, starting from £3 per month, depending on your ability to contribute. Rewards include having a copy of the paper posted to you every month. Local businesses and charities can also sign up and, from as little as £10 per month, access discounts on advertising.

**Find out more at: [enfielddispatch.co.uk/join](https://enfielddispatch.co.uk/join)**

## OUR CURRENT MEMBERS

Derek Grant, Michael Dickinson, Young Notes, Ed Balleny, Natasha Boydell, Elizabeth Crosthwait, Richard Stones, Philip Ridley, Suzanne Beard, Chris Kaufman, Martyn Stogden, Susan Cook, Rupert Price, Meryn Cutler, Andrew Irvine, Basil Clarke, John Naughton, Right at Home Enfield, MumSing Choir, Lloyd Tew-Cragg, Andrew Warshaw, Neil Churchill, Karl Brown, Anthony Fisher, Dan Wright, Kay Heather, Julia Mountain, Jerome O'Callaghan, Carole Stanley, Mervyn Maggs, Aditya Chakraborty, Norman Bennett, Vivien Giladi, Greg Andrews, The Old Enfield Charitable Trust, Matt Burn, Martin Russo, Marilyn Hamilton, Laura Davenport, Mick Wood, Helen Osman, Enfield Over 50s Forum, Francis Sealey, Caroline Banks, Bill Linton, Joe Hickey, William Yates, Petr Mitterbach, Gianni Sarra, Tracy Hughes, Kristiana Heapy, Neil Bachelor, John Crowther, Hannah Salvidge, Sean Wilkinson, Janice Nunn, Julia Daniel, Deborah Dalglish, Phil H, Däna Roberts, A Cleary, Stephen Evans, Julian Rhys-Williams, Steve King, Robert Pite, Lauri Clarke, Anne Cullen, Ross Cunningham, Diana Goforth, Kirsten Lowe, Seton During, Aurora Yaacov, Sylvia Collicott, Paula Lamont, Liz Wright, Elsie Rigden, Sangeeta Waldron, David Mickleburgh, John Machin, The Enfield Society, Joe Studman, Ryan Hebbs, Adam White, Sue Grayson Ford, Bush Hill Park Residents Association, Zoe White, Carol Fisk, Harriet Ray, Hannah Dyson, Peter Krakowiak, Friends of Hillyfields, Julie Nedza, Lynda Dyson, Phil Gooch, Chris Skilbeck, Peter Campling, Alison Shepherd, Chris Graham, Lindsay Rawlings, Harri Ramanathan, Per Hansen, Carlo Rimini, Jean Christou, Bhaskank Mehta, Sheila Spooner, Harry Redmond, Anita Jena-Smol, Pat Kane, Ben Sulaiman, Peter Batten, Jim Shepherd, Graham Halle, Keith Comley, Thomas Whiteway, Anthony Maddox, Neil Littman, Janet Carrick, Tricia Sharpe, Robert Dawes, Paul O'Brien, Richard Mapleston, Malcolm Stow, Graham Cleur, Evan Hughes, Isobel Whittaker, Andrew Murray, Andy Bean, Debbie McVitty, Richard Whitaker, Mark Shaw, Peter Moutell, Jane Maggs, John Cole, Vanessa Wiseman, Caroline Bernard Moxey, Ioannis Chronakis, Caley Montgomery, Sarah Jackson, Liz Gilbert, Edward Smith, Jenny Noon, Josepha Scotney, Amy Williams, Su Fairbairn, Linda Bartell, Fran Holmes, Elizabeth Hart, Helen Menzies, Boyd Goldie, Ann Jones, Alison Parker, Yasemin Brett.

