

ENFIELD DISPATCH

No.52 THE BOROUGH'S FREE COMMUNITY NEWSPAPER

JAN 2023

CENSUS

How Enfield changed between 2011 and 2021

P. 4

COMMENT

A memorable world cup for right and wrong reasons

P. 6

ARTS & CULTURE

Making Angel Edmonton the place to be

P. 12



ENFIELD WAS BLANKETED in around 15cm of snow last month, as winter got off to its coldest start for several years. While many families went out to enjoy the snow, the week-long freeze led to severe problems on the roads, with many residential streets left ungritted and pavements dangerously covered in ice for several days. Pictured above is Clay Hill in northern Enfield. Credit Jack Pourgourides (Twitter: @JPPhotography21)

Council offered £1million to approve 'unsafe' tower block

Letter obtained under FOI Act reveals planning agent's attempt to sway decision on Brimsdown scheme days before meeting

BY JAMES CRACKNELL

The planning agent promoting a 21-storey tower block in Brimsdown offered to pay Enfield Council £1million "in addition" to the usual community contributions made by developers proposing large schemes.

In a letter sent to Enfield Civic Centre just days before a planning committee meeting at which the Brimsdown scheme was deferred by Labour councillors against the advice of the council's planning department, the developer's agent wrote that "we are prepared to make an equivalent monetary offer to be discussed, negotiated and agreed"

adding in brackets that the sum "could be 1 million pounds".

It is normal for developers of large schemes to make financial contributions to local planning authorities to support necessary upgrades of local infrastructure and to provide affordable housing, but this is usually done via Section 106 and Community Infrastructure Levy (CIL) payments agreed as part of a planning application. In his letter – obtained by the *Dispatch* via the Freedom of Information Act – planning agent Murat Aydemir proposes that the £1million offer would come "in addition" to CIL and that he believed the council would "greatly benefit from a

substantial monetary contribution".

Conservative planning committee member and former council leader Michael Rye told the *Dispatch* the £1million offer was "highly unusual" and should have been flagged to the committee when the planning application was debated by them five days later.

At that meeting, committee members were repeatedly warned that the plans for 100 homes plus retail and office space on the site of a derelict pub in Green Street, next to Brimsdown Station, would be unsafe – and were given twelve reasons to reject the application by planning officers. These included serious concerns over fire safety and

the safety of children playing on the tower's proposed rooftop play space.

However, when it came to the decision, seven Labour councillors voted against the motion to refuse planning permission and later agreed instead to give the developer more time to address the concerns raised, voting to defer the scheme. This was a second deferral, following the first in July.

Of the Labour councillors on the committee, only Doug Taylor voted to reject the application, alongside all four Tory members. After the vote, Conservative Jim Steven, visibly angry, said he was "not happy

CONTINUED ON PAGE 2




enfielddispatch.co.uk


enfielddispatch@socialspider.com


@EnfieldDispatch


@EnfieldDispatch


/EnfieldDispatch



The Dispatch is supported by Chamberlains Estates – turn to page 3

ED.

No.52
JAN 2023

Enfield Dispatch is the borough's free community newspaper. We publish monthly and distribute 15,000 free copies of each issue

Publisher
David Floyd

Editor
James Cracknell

Designer
Jonathan Duncan
Head of Advertising
Klaudia Kiss

Local Democracy Reporter
Simon Allin

Contributors
Andrew Warshaw, Bambos Charalambous MP, Fran Di Fazio, Lewis Toumazou, Susan Jamson, Lennie Varvarides, Kazimir Bielecki

CONTACT

Call 020 8367 2975

Email EnfieldDispatch@socialspider.com

Post Nicholas House, River Front, Enfield EN1 3TF

ADVERTISING

Call 07732 000 430

Email klaudia@socialspider.com

For licensing enquiries:
Email maia@socialspider.com

Enfield Dispatch is published by
Social Spider Community News:
Visit socialspidercommunitynews.co.uk



Enfield Dispatch is a member of IMPRESS: The Independent Monitor of The Press. For more information on the Dispatch's complaints policy and how to make a complaint visit: enfielddispatch.co.uk/complaints

Council admits Meridian Water 'community garden' will be built on

BY SIMON ALLIN, LOCAL DEMOCRACY REPORTER

Promotional material for Enfield Council's Meridian Water regeneration scheme has been amended following an intervention by the advertising regulator.

Text on a website marketing the homes has been added to state that the "community garden" being planned for Meridian One – the first phase of the scheme currently under construction in Edmonton – is a "meanwhile space" that will be in place until "at least 2026".

It comes after housing campaign group Better Homes Enfield contacted the Advertising Standards Authority (ASA) to raise concerns that the marketing information for the regeneration scheme failed to mention that the council ultimately aims to build housing on the site of the community garden.

Planning documents drawn up by Vistry Homes – the developer appointed by Enfield Council to build homes at Meridian One – state that the garden "will likely be brought forward for residential development in the future".

Better Homes Enfield claimed in a blog post that the garden appeared to have been used "to help boost the environmental and social-value credentials of Meridian One" and "to generate interest and sell the flats at the best price", but that this "seems to be a cynical marketing tactic when there is clearly an aim to build housing on the site of the community garden".

The complaint made to the AQA was informally resolved after extra information was added to

the Meridian One sales website to reflect the garden's temporary nature. While the council claims it has "always been clear" the community garden would be a temporary feature, advertising hoardings adjacent to the Meridian One sales office have been promoting the community garden without mentioning it is temporary.

Better Homes Enfield says it has also asked for a promotional video and outline map of the development to be amended to address its concerns over the garden. The housing campaign group has repeatedly raised concerns over the amount of green space being provided on the Meridian Water development. The council's draft Local Plan, which underwent a round of public consultation in 2021, states that each phase of Meridian Water must meet a 30% open public space target as a minimum. But during a planning committee in September, Matt Burn from Better Homes Enfield claimed only around 11–16% of Meridian One would now be "permanent,

open public space".

The campaign group has called on the council to make the temporary garden a permanent feature. It points out that Upper Edmonton ward already has a deficiency of open public green space, and that retaining the garden would help to compensate for the loss of Ladysmith Road open space, part of which was developed to provide a new primary school several years ago.

A council spokesperson said: "Enfield Council has always been clear on the Meridian Water community garden being a temporary feature.

"As the community garden isn't a permanent feature, the proposals for green spaces at Meridian Water haven't included the community garden.

"There are no plans on making the community garden a permanent feature in the future, however the council's current plans do intend to have the community garden in place until at least 2026."

Vistry Homes and the ASA were approached for comment.



Advertising hoardings around the Meridian One development promote a 'community garden' that is set to be concreted over by 2026

CONTINUED FROM PAGE 1

with the vote" and suggested the outcome had been "twisted".

Two days after the October meeting, a leaked email shows that Murat Aydemir, who works for developer Yen of London Ltd's appointed planning agents IntelliArch Ltd, invited planning committee chair Sinan Boztas to meet to discuss the application with him, alongside head of planning Brett Leahy. The council has not answered questions from the

Dispatch about whether any meeting subsequently took place and what was discussed.

Cllr Rye, who told October's meeting the committee "would not be able to look itself in the face" if it did not reject the Brimsdown application, said of the newly-revealed letter offering the council £1million: "This is a highly unusual letter and should have been reported to the planning committee."

The council has been asked to comment on who at the planning department was made aware of

the £1million offer, whether any councillors were made aware, and why it was not disclosed at the committee meeting. It has not provided any response.

Murat Aydemir has been asked about why the offer was made, what the offer was aiming to achieve, why the suggested £1million was not included as part of the scheme's CIL or Section 106 contributions, and what discussions he has had with councillors outside of the two committee meetings. He has not provided any response.

Whitewebbs lease plan slammed

Councillors and campaigners have accused Enfield Council of breaking a key promise on the future of Whitewebbs Park after a public notice announcing a 25-year lease to Tottenham Hotspur was published.

The Premier League football club became the preferred choice for leasing the former Whitewebbs Park Golf Course in 2021, with a new Spurs women's academy being proposed for the northern half and public parkland for the southern half. The council stated at the time that "no lease would be entered into unless and until planning consent is granted".

Now, a new public notice states "Enfield [Council] intends to enter into an agreement to grant a lease of the property for a term of 25 years to Tottenham Hotspur Limited, which is or may include open space".

A council spokesperson stated its "position has not changed" and that "the granting of a lease is wholly contingent on THFC securing planning permission".

But Sean Wilkinson, chair of the Friends of Whitewebbs, said it didn't make sense for the council to ask for objections to the lease when the detailed plans had not been submitted. He said: "The plan was to wait for Spurs to submit its planning application. At that stage the public could make objections.

"The council now wants to rush through the lease, before we know what Spurs wants to do [...] Why is this being done and who benefits? The people of Enfield will get nothing – the proposed rent is pathetically small. The only beneficiary will be Spurs and its owners."

Whitewebbs councillor David Skelton said: "This is totally unacceptable. It is a breach of the promise made by the council, that the planning application would come before the lease, and also a breach of the promise to properly consult the community."

The move came just over a month after a letter threatening legal action over the "enclosure" of Whitewebbs was sent by campaigners to the council. A council spokesperson said: "Enfield Council has categorically not entered into a lease with Tottenham Hotspur."

People can object to the lease by emailing whitewebbs@enfield.gov.uk or by writing to the council's strategic property services before 15th January.

CHAMBERLAINS

E S T A T E S

Wishing All our Clients, new and old,
a Healthy and Happy New Year!



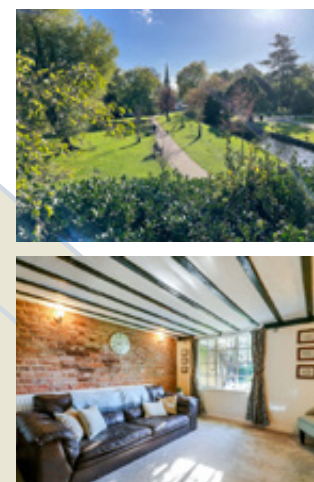
SOLE AGENTS

STUNNING 5/6 BEDROOM VICTORIAN FAMILY HOME – EPC F
Chase Green Avenue, Enfield, Middx EN2
£1,150,000 Freehold



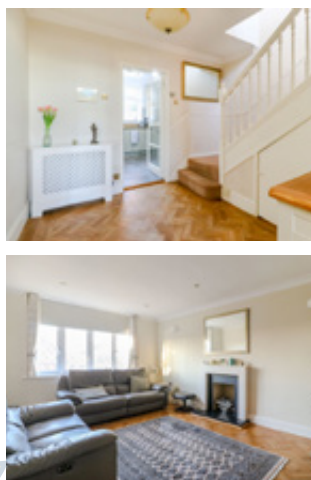
SOLE AGENTS

18TH CENTURY CHARACTER COTTAGE – EPC D
Gentleman's Row, Enfield, Middx EN2
£850,000 Freehold



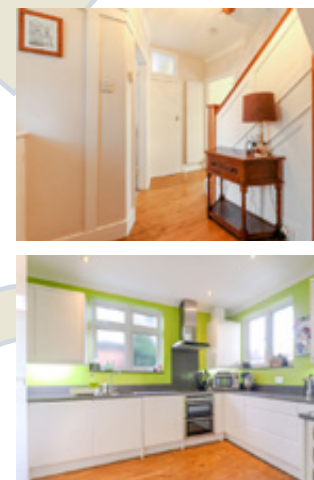
SOLE AGENTS

CASH BUYERS ONLY – DETACHED FIVE BEDROOM FAMILY HOUSE – EPC D
Old Park View, Enfield, Greater London EN2
£750,000 Freehold



SOLE AGENTS

HALLS ADJOINING EXTENDED FAMILY HOUSE – EPC D
Parsonage Lane, Enfield, Middx EN1
£725,000 Freehold



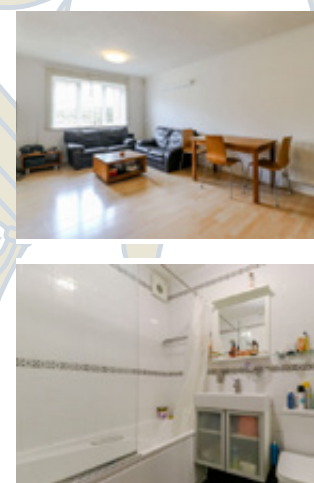
SOLE AGENTS

THREE BEDROOM SEMI-DETACHED HOUSE – EPC D
Gladbeck Way, Enfield, Greater London EN2
£575,000 Freehold



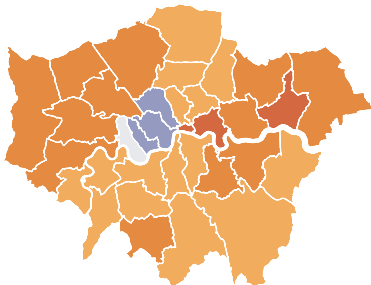
SOLE AGENTS

GROUND FLOOR TWO DOUBLE BEDROOM APARTMENT – EPC C
Vermont Close, Enfield EN2
Guide Price £350,000 Share of Freehold



How Enfield changed between 2011 and 2021

Detailed data from the 2021 Census of England and Wales have been published by the Office for National Statistics (ONS) – this page highlights some of the key findings for Enfield borough

POPULATION	ETHNICITY
Population growth was lower in Enfield than across London	Ethnic minority and mixed race backgrounds accounted for nearly half of Enfield residents in 2021, making the borough significantly more diverse than the country as a whole
<div><div><div>312,500</div><div>Enfield 2011</div></div><div><div>330,000</div><div>Enfield 2021</div></div><div><div>Enfield</div><div>+5.6%</div></div><div><div>London 7.7%</div></div><div><div>England & Wales 6.3%</div></div></div> <div><div><div>-2</div><div>-0.5</div><div>0.5</div><div>+2</div><div>+8</div><div>+16</div></div></div>	<div><div>White</div><div><div>86%</div><div>England & Wales 2011</div><div>Enfield 2011</div><div>61%</div></div><div><div>81.7%</div><div>England & Wales 2021</div><div>Enfield 2021</div><div>52.1%</div></div></div> <div><div>Black</div><div><div>England & Wales 2011</div><div>3.3%</div><div>Enfield 2011</div><div>17.2%</div></div><div><div>England & Wales 2021</div><div>4%</div><div>Enfield 2021</div><div>18.3%</div></div></div> <div><div>Asian</div><div><div>England & Wales 2011</div><div>7.5%</div><div>Enfield 2011</div><div>11.2%</div></div><div><div>England & Wales 2021</div><div>9.3%</div><div>Enfield 2021</div><div>11.5%</div></div></div> <div><div>Mixed</div><div><div>England & Wales 2011</div><div>2.2%</div><div>Enfield 2011</div><div>5.5%</div></div><div><div>England & Wales 2021</div><div>2.9%</div><div>Enfield 2021</div><div>5.9%</div></div></div> <div><div>Other</div><div><div>England & Wales 2011</div><div>1%</div><div>Enfield 2011</div><div>5.1%</div></div><div><div>England & Wales 2021</div><div>2.1%</div><div>Enfield 2021</div><div>12.1%</div></div></div>
MEDIAN AGE	RELIGION
Enfield's population is younger than the national average	Less than half of Enfield residents identified as Christians for the first time in 2021, while the number of people not belonging to any religion rose sharply
<div><div>34</div><div>Enfield 2011</div></div> <div><div>37</div><div>Enfield 2021</div></div> <div><div>39</div><div>England & Wales 2011</div></div> <div><div>40</div><div>England & Wales 2021</div></div>	<div><div>No religion</div><div><div>15.5%</div><div>Enfield 2011</div></div><div><div>19.8%</div><div>Enfield 2021</div></div><div><div>25.2%</div><div>England & Wales 2011</div></div><div><div>37.2%</div><div>England & Wales 2021</div></div></div> <div><div>Christian</div><div><div>53.6%</div><div>Enfield 2011</div></div><div><div>46.4%</div><div>Enfield 2021</div></div><div><div>59.3%</div><div>England & Wales 2011</div></div><div><div>46.2%</div><div>England & Wales 2021</div></div></div> <div><div>Muslim</div><div><div>16.7%</div><div>Enfield 2011</div></div><div><div>18.6%</div><div>Enfield 2021</div></div><div><div>4.9%</div><div>England & Wales 2011</div></div><div><div>6.5%</div><div>England & Wales 2021</div></div></div> <div><div>Hindu</div><div><div>3.5%</div><div>Enfield 2011</div></div><div><div>3.1%</div><div>Enfield 2021</div></div><div><div>1.5%</div><div>England & Wales 2011</div></div><div><div>1.7%</div><div>England & Wales 2021</div></div></div> <div><div>Jewish</div><div><div>1.4%</div><div>Enfield 2011</div></div><div><div>1.1%</div><div>Enfield 2021</div></div><div><div>0.5%</div><div>England & Wales 2011</div></div><div><div>0.5%</div><div>England & Wales 2021</div></div></div> <div><div>Buddhist</div><div><div>0.6%</div><div>Enfield 2011</div></div><div><div>0.5%</div><div>Enfield 2021</div></div><div><div>0.4%</div><div>England & Wales 2011</div></div><div><div>0.5%</div><div>England & Wales 2021</div></div></div> <div><div>Sikh</div><div><div>0.3%</div><div>Enfield 2011</div></div><div><div>0.4%</div><div>Enfield 2021</div></div><div><div>0.8%</div><div>England & Wales 2011</div></div><div><div>0.9%</div><div>England & Wales 2021</div></div></div>
UK BORN	
Fewer than 60% of Enfield residents in 2021 were born in the UK	
<div><div>Enfield 2011</div><div>65%</div></div> <div><div>Enfield 2021</div><div>59.6%</div></div> <div><div>England & Wales 2011</div><div>87%</div></div> <div><div>England & Wales 2021</div><div>83.2%</div></div>	
DEPRIVATION	
Deprivation in Enfield continues to exceed the national average. The census defines households as being deprived in four ways; by education, employment, health or housing. Below are the percentages that met at least one criteria	
<div><div>63.9%</div><div>Enfield 2011</div></div> <div><div>57.8%</div><div>Enfield 2021</div></div> <div><div>57.7%</div><div>England & Wales 2011</div></div> <div><div>51.7%</div><div>England & Wales 2021</div></div>	
EMPLOYMENT	
The percentage of people aged 16 years and over (excluding full-time students) who were employed fell in Enfield, while rising across London	
<div><div>54.6%</div><div>Enfield 2011</div></div> <div><div>54.2%</div><div>Enfield 2021</div></div> <div><div>58.7%</div><div>England & Wales 2011</div></div> <div><div>57.2%</div><div>England & Wales 2021</div></div>	
MARITAL STATUS	
The number of people who are either single, cohabiting, separated or divorced is rising. Below are the percentages for those either married or in a civil partnership	
<div><div>44.2%</div><div>Enfield 2011</div></div> <div><div>43%</div><div>Enfield 2021</div></div> <div><div>48%</div><div>England & Wales 2011</div></div> <div><div>44.6%</div><div>England & Wales 2021</div></div>	



HARINGEY
SIXTH FORM COLLEGE
SUCCESS AMBITION RESILIENCE

MORE IN THE NEW YEAR

Whether it's a new
course to start in
January or a guaranteed
place for September;
come and see us on
Friday 6th January at
our VIP day.

#MoreThanACollege

See website for more information www.haringey6.ac.uk



This was a memorable world cup for both right and wrong reasons

Enfield sports journalist Andrew Warshaw – attending his tenth world cup – gives his verdict on Qatar 2022

Having covered nine world cups as a working journalist, I had always wanted to attend purely as a fan and chose Qatar mainly because of the compact nature of the tournament and the proximity of the stadiums.

My week in Doha was weird and wonderful in terms of the sights, smells and sounds of east meeting west. The crime-free cleanliness; Muslims respectfully called to prayer; local Qataris in their thobes and robes, many with their faces painted in team colours. A world cup of contradictions, with unprepossessing back-street convenience stores sitting side-by-side with the showy signs of affluence.

With the tiny Gulf state not used to being invaded by football fans from all over the world, there was at times a sense of unreality about the whole thing. It often felt somewhat artificial, with fan zones and cafes occasionally giving off a 'rent-a-crowd' vibe. But there is no doubting the Arab region's passion for football. Rarely have I heard more noise from fans than that exuberantly generated by followers of Tunisia and Morocco.

In terms of friendliness and hospitality, one can have few complaints, notwithstanding the ongoing and important narrative about migrant workers' rights which continues to hang over the event and deserves to long after the final whistle. The Qataris put on a welcoming front, though whether that mitigated the entirely justifiable debate about whether the country should have been awarded the tournament in the first place, let alone it being staged in winter, is highly questionable.

There were a number of niggles, not least the exorbitant cost of stadium food and drink which, in the case of a bottle of water, was ten times more than in a side-street convenience store. Security was tight (so tight that I had something as innocent as a pen confiscated after being told I could stab someone with it) but it was also remarkably quick and courteous. On one occasion, having explained politely that the strange-looking cream-coloured liquid in my rucksack was in fact stomach medicine, staff on the gates were understanding.

Another plus was the almost total absence of ticket touts and the feeling of being constantly safe – an important factor, especially for the more absent-minded visitor such as this writer. The chance of being pickpocketed or mugged in the street was virtually nil.

As for the unavailability of alcohol in and around stadiums, it had little adverse effect. Only once did I see any supporter being even close to looking inebriated (an England fan I might add). If you wanted a drink badly enough, searched hard enough and had sufficient funds at your disposal, you could find a licensed bar to watch matches – provided you booked in advance. Invariably these were exclusive venues located at swanky hotels where, for a hefty fee (of course), you could buy a daily pass and sometimes enjoy a swim in the sea.

Not all them were exclusive, however. One Brit-styled pub, reputed to be the cheapest in town (still the equivalent of £25 for three drinks with a voucher), was a throwback to the 1970s but not, at my age, for me. Though the atmosphere was fantastic, you could hardly breathe for the cigarette smoke or move because it was so rammed.

Qatar, as we know, spent an eye-watering amount on building the infrastructure for this world cup. There are legitimate questions to be asked about what happens to all of it when everything gets back to normal – not just the stadiums but also the hundreds of accommodation blocks built especially



Andrew watched England beat Senegal 3-0 in the second round of the tournament

for the tournament.

Was it right and proper to expect the players, rather than politicians, to fly the flag for human rights? There are serious shortcomings when it comes to Qatar's laws and treatment of migrant workers, but there have also been double standards. Among the many pontificating commentators and sporting figures who have lambasted Qatar's right to host, a fair few have been only too

happy to take the regime's money when it suits them – whether working for the local broadcasting company or taking advantage of Qatar's excellent training facilities.

That the tiny country half the size of Wales got 'lucky' winning the vote to host back in 2010 is undeniable – scandalous even. But it is also undeniable that the Middle East as a whole deserved its chance to showcase the region's attributes.

Advertisement

Make New Friends & Learn New Skills



- FUN, EASY, STEP BY STEP
- Develop impressive new skills in a friendly atmosphere
- 3 hour sessions, morning or afternoon, for 3 1/2 months
- Learn how to make Art you can give as gifts or sell at craft fairs
- Get arty and make the Class your favourite day of the week!

THIS IS THE
**ART
CLASS**
YOU'VE ALWAYS
WANTED

**ABSOLUTE BEGINNERS TO IMPROVERS
WILL LOVE THIS COURSE!**



"It's brilliant, now I can draw my grandchildren!!!"
Sue, Shrewsbury

"Don't miss out. You will love this course!"
Gary, Newbury

STRICTLY LIMITED PLACES
CALL NOW TO BOOK FOR THE SUMMER TERM

020 4542 7606
SCHINDLER HALL, 75 CHASE ROAD
ROAD, LONDON N14 4QY



Andrew meets French football fans in Doha

Bambos Charalambous is a Labour MP representing Enfield Southgate Credit parliament.uk



Government is to blame for NHS backlogs

In our latest MP's column, Bambos Charalambous decries increasingly long waits for NHS treatment

A very happy new year to everyone in Enfield. I hope you all enjoyed a restful break over the festive period and are looking forward to everything 2023 holds.

Looking back on 2022, it was quite a year in British politics. In Enfield, we had local elections in May and Labour retained control of the council as the party made significant gains across the country, including in neighbouring Barnet.

We also watched on in horror at Russia's illegal invasion of Ukraine. Since the war began last February, more than 120 Ukrainians and their families have been welcomed into the homes of Enfield residents. It has been incredibly moving to see how welcoming our community has been to those fleeing this horrific conflict.

In Westminster, there was a lot of political turmoil. For those struggling to keep up, we had three prime ministers, four chancellors and four budgets.

With all this upheaval at the top of government, the UK's economic outlook has continued to

get more challenging. We face the lowest growth of any OECD nation. Living standards are set to fall by 7.1%, the largest decline in six decades, while food and energy costs are all going up. It is a very difficult time for people across the UK and of course it will be the most vulnerable who face the worst impact of the cost of living crisis.

As we start the year, I want to focus on one of the biggest challenges facing our community and people across the UK: the crisis in our NHS. This is something that is coming up again and again in my casework. According to recent data, 3,933 people had to wait more than two weeks for a GP appointment locally. Across the UK, seven million people are waiting months and even years for treatment. This has a devastating impact on their day-to-day lives, as they are held back from working and living their lives to the full.

This is not down to NHS staff, who continue to go above and beyond to protect people. The problems the NHS faces today are the consequence of twelve years of Conservative misman-

agement. The longer we give the Tories, the longer patients wait.

As your MP, I've been supporting calls for a long-term plan to fix our NHS, as I do not believe we can build a healthy economy without a healthy society. This starts with investing in our NHS workforce, which faces record vacancies.

That's why, last month, I voted to close the 'non-dom' tax loophole and use this money to train a new generation of healthcare staff, including doubling the number of nurses and doctors. There are around 44,000 non-doms in the UK, who are using a 200-year-old loophole to pay their taxes overseas. I believe patients need treatment, and NHS staff need support, more than the wealthiest need a tax break.

I will continue to hold the government to account so that patients in our community are seen on time and local NHS staff are supported in the future.

Bambos Charalambous is a Labour MP for Enfield Southgate. If you are a constituent, you can get in touch:
Call 020 7219 3460
Email bambos.charalambous.mp@parliament.uk
Visit bambos.org.uk

"The problems the NHS faces today are the consequence of twelve years of Conservative mismanagement"

LETTERS

Send us your letters

Got an opinion on something in Enfield? We accept letters of up to 150 words from people and organisations in the borough. Email EnfieldDispatch@socialspider.com before the next deadline on **Tuesday 17th January**.

Climate questions

Dear Enfield Dispatch

Within two years a general election will be on us and it will be a critical election for addressing the climate emergency.

Engaging decision-makers on what needs to be done nationally as well as globally is vital for our democracy. Enfield Climate Action Forum (EnCaf) has written to our three sitting MPs to ask them if they will take one question a month from us, involving many of the 120 groups in our network. We will then post their answers on our website and also disseminate widely on social networks.

Two decades ago the local United Nations association ran a similar project with our then-sitting MPs and they all took part. We hope our current MPs will this time as well, because democratic engagement is vital to tackling the climate emergency.

Francis Sealey
Enfield Climate Action Forum

Country idyll

Dear Enfield Dispatch

On a quiet, cold morning in December it was time for a peaceful day of mindful solitude. I arrived at a spot in the countryside and, on arrival, I contemplated and admired the snow-covered, skeletal trees and white-covered field looking like icing.

I soon came face-to-face with a muntjac deer no more than three metres away, with a young fawn in tow! They appeared as astounded to see me as I was to see them. We, I think, admired each other before the pair strolled off and disappeared into the undergrowth.

While sitting in a cold snowy glade, I heard a buzzard, the sound fading away. A pheasant strolled by blissfully unaware of me. On finishing the walk, I sat with a tea, in awe of the natural beauty, the peaceful solitude and time of reflection, feeling at peace with the world. It is an amazing place in the country to find peace and relaxation. Where could it be? Trent Park, Cockfosters.

Antony Smith
Edmonton Green

Dementia plan

Dear Enfield Dispatch

Dementia is the UK's biggest killer, and one of the greatest health challenges facing society. Earlier this year the government announced a 'visionary' ten-year plan for dementia, aiming to increase diagnosis and support people with their health and care needs. This announcement provided hope for the 900,000 living with dementia in the UK. The government promised to publish the plan by the end of 2022 – but we are still waiting.

With three health secretaries since July, progress on the ten-year plan has stalled. And now, 19 times over, the government has responded to questioning by stating "further information will be available in due course".

While I am thrilled by the recent positive drug trial results, they give hope for the future, but for those living in the now, this lack of clear direction from the government is costing them time and hope. Dementia doesn't wait for due course – we need a #PlanD now.

Petronella
Edmonton

Bus stop bother

Dear Enfield Dispatch

Coming out at Southgate Station one evening I was waiting for a W9 bus to Winchmore Hill and noticed all the digital indicator boards for the buses had been removed. I normally use the CityMapper app for travel on buses but quite often when I get back to Southgate I prefer to use the indicator boards instead of taking my phone out. I contacted TfL, which said it had no answer as to why the digital board had been removed and would get the 'countdown team' to contact me but, in the meantime, suggested I should use their recently introduced TfL Go app.

For me, this isn't a major issue, but it assumes everyone else having either a smartphone or using apps. There are still a large number of people who either don't have smartphones or are unfamiliar with apps. I think a lot of older people will find issues like this stressful yet TfL have not consulted customers.

Neil Littman
Winchmore Hill



I GET MONEY I WORK FOR MY MONEY

Created by DYSPLA in collaboration with Orchardside School, Enfield

Our Enfield based artists have each been excluded from mainstream education and for reasons of personal safety they have been anonymised. This project lead a collective of teenagers through discussions on the concept of individualism (/ɪndɪˈvɪdʒ(ə)lɪz(ə)m/) to create 'slogan poetry' and recite their singular works in front of volumetric cameras. Relying on a societal increase of solipsistic philosophy these artworks represent the cognitive segregation of our children depicted as precious organic matter.



Supported using public funding by
**ARTS COUNCIL
ENGLAND**

SCAN FOR AR





I PRAY I RECIEVE I PRAY I RECIEVE I PRAY I RECIEVE

Created by DYSPLA in collaboration with Orchardside School, Enfield
Our Enfield based artists have each been excluded from mainstream education and for reasons of personal safety they have been anonymised. This project lead a collective of teenagers through discussions on the concept of individualism (/ɪndɪˈvɪdʒʊ(ə)lɪz(ə)m/) to create 'slogan poetry' and recite their singular works in front of volumetric cameras. Relying on a societal increase of solipsistic philosophy these artworks represent the cognitive segregation of our children depicted as precious organic matter.



Supported using public funding by
**ARTS COUNCIL
ENGLAND**

SCAN FOR AR



Primary school launches foodbank to help struggling families

St Andrew's in Enfield Town has stepped in to help amid the cost-of-living crisis



Opening the new food pantry at St Andrew's Primary School in Enfield Town are pupils Isaac and Albie, plus Enfield North MP Feryal Clark

Staff at St Andrew's CofE Primary School in Churchbury Lane were moved to act when they realised that even families who did not qualify for free school meals were finding it difficult to afford food for packed lunches and meals at home.

This led the school to set up a small space where food and other essential donations can be stored. Parents are then invited to pick up the products they need for free without any need to register, so there is no stigma attached. As well as tins and packets of food the pantry supplies parents with cleaning, sanitary and personal hygiene products. There is even a fridge stocked with butter and milk.

The St Andrew's School foodbank was officially launched last month by Enfield North MP Feryal Clark, who praised both staff and pupils for their initiative. She said: "It is a very difficult time for lots of people so it is very important for everyone to do their bit to help the community and it is amazing the



Hundreds of items were donated by parents

work you are doing to open this pantry – what have you done is incredibly generous."

Jude Statham, head of school at St Andrew's, said the pantry had been supported with a small grant from Enfield Council and would now be in place for the whole winter. She told the *Dispatch*: "We have had collections in the past for Christmas hampers and our parents have been very generous, but this time we wanted to do something more permanent.

"It is very discreet because it is not in the main school building, you can come here and take what you like.

"We have had an increase in children who are receiving free school meals but we are also seeing families that do not qualifying for them who are beginning to struggle. That is why we have opened it to all families."

Year six pupils Albie and Isaac have been helping to manage the donations received from parents at the school. Albie said: "It is worth it knowing that someone has been able to cook their dinner from the pantry."

Theresa Davis, chair of governors, added: "It is a great initiative and to have the children involved as well is fantastic."

An Enfield Town primary school has opened a foodbank for parents who are struggling to feed their children amid the worsening cost-of-living crisis.

Advertisement

EDMONTON GREEN

ENFIELD COMMUNITY HEROES
Sponsored by Edmonton Green Shopping Centre

Helping local people start a new career

Sue Halawa set up a charity that offers free skills training and careers advice for unemployed people

BY FRAN DI FAZIO

Sue Halawa established the Skills and Training Network (STN) in Edmonton in 2011 to offer free professional training to unemployed people. The charity, which is based at Community House, has now become an accredited educational and advice centre.

"The community doesn't only need education and training, they need advice," Sue explains. "Especially with the cost-of-living crisis, there's a huge demand. Some people come to us because their rent is being raised, they can't cope with the benefits they have, or they can't pay the bills."

One-third of the working-age population in Edmonton Green ward have no



The Skills and Training Network set up by Sue Halawa recently received funding via the council's Enfield Neighbourhood Fund

qualifications, presenting a significant barrier to employment. "We have people coming from different wards in Enfield, but Edmonton itself is full of disadvantages, and worklessness is quite huge.

"The people who set up the organisation are from the community, so we understand what the issues are."

STN has become a point of reference for residents. As a multicultural organisation with trainers fluent in Turkish, Arabic, French and Urdu, it can cater to the needs of those who are put off by language barriers from seeking support.

"We are actually doing well in terms of attracting people," Sue says. "They feel safe to come and learn from us, and if they have any issue they come and speak to us. Today we had someone who had an issue with the job centre, we solved it for her and she was so happy."

Last year STN became a beneficiary of Enfield Council's Enfield Neighbourhood Fund. It directed the grant towards a work placement programme, providing basic skills and vocational training. The STN work placement programme

is aimed at developing students' basic skills, which include language, literacy and information technology. They can then enter vocational and employability training and obtain a professional reference to use when applying for jobs.

Sue hopes to continue to provide free education and support to the community through STN. "We can see the progress from what we're doing. People are keen to move into employment," she says. "We need to make sure we secure the funding to continue to help the community."

Nominate your heroes

Dispatch readers are welcome to nominate their own 'Enfield Community Hero' – someone who you think has gone above and beyond to help support the local community. Simply email your nomination to EnfieldDispatch@socialspider.com

Waltham Forest College



think
BIG

NEW COURSES January 2023

19+ Adults and 16-19 Young People:

Access to Higher Education | Barbering, Beauty and Hairdressing

Business and Accounting | Construction | Computing & IT

Employability Skills | English, Maths and ESOL

Hospitality & Culinary Arts | Prince's Trust Team Programme



▶ Visit **waltham.ac.uk** or
scan the QR code to apply.

ADULTS MAY BE ELIGIBLE TO STUDY FOR FREE!

OPEN EVENT

Sat 28th January, 10am-2pm

Guided Campus Tour

Chat to Students and Staff

Interactive Taster Events

Presentation 'What are T-Levels?'

Admissions Guidance

Apply for a Course



▶ Visit **waltham.ac.uk** or
scan the QR code to register.

☎ 020 8501 8501 ✉ myfuture@waltham.ac.uk 📍 707 Forest Road, E17 4JB

HIGHER EDUCATION OPEN DAY

Looking for support to transition to university?
Our new Higher Education courses are suitable for
adult learners who have completed their Level 3.

Join us on Sat 28th January, 10am-2pm for
information, advice and guidance.



▶ Visit **waltham.ac.uk** or
scan the QR code to register.

Cups of delicious free Nigerian vegetable and pepper soups by Coal City warmed up passers-by Credit Timothy Pei



Making Fore Street the place to be

Lewis Toumazou from Fore Street for All on another successful 'Thursday Lates' event and what's next for the community arts group

Over the past year Fore Street For All Community Interest Company (CIC) has been delivering a cultural programme along Fore Street in Angel Edmonton.

Our 'Thursday Lates', a series of events that runs on the first Thursday of each month, brings the community together as we work with local residents and businesses to help foster a night-time economy along our local high street.

Fore Street for All is a collaboration between residents group React, local architects Fisher Cheng and Edmonton-based art organisation Artist Hive Studios. For our last event of 2022 we wanted to go out with a bang, so we decided to organise a night festival along Fore Street.

The festival celebrated Fore Street's people, places and past. Inside Fore Street Library, which was renovated and reopened as a 'living room library' in 2022, we hosted stalls for local artists, businesses and groups, an art exhibition by sculptor Alf Linney and painter Tahira Tofa, while visitors hit the dancefloor for a silent disco.

People enjoyed Cath Carver's *Soft Salon* art installation upstairs at Gaby's café, photography workshops

and a live performance by Lost Chimes at Cousins Snooker Club, plus a vibrant music and dance performance on the high street by Mbilla Arts and Somos Chibchas.

Visitors and locals gathered to listen to music from the New River Dixielanders brass band inside the alleyway underneath Bridport House. The alleyway was lit up by lanterns made by local school children from Raynham and St John and St James Primary School.

Cups of delicious, free Nigerian vegetable and pepper soups by Coal City warmed up visitors and passers-by. The vegetables which would have otherwise gone to waste were donated by Brothers Fruit & Veg Ltd, an Edmonton-based green-grocers. Local supermarket Big Ben donated meat for the non-



Children got their picture taken with a real-life reindeer outside St John & St James Primary School Credit Timothy Pei

vegetarian soup, and local veteran fruit and veg seller Charlie donated bags of potatoes.

And that wasn't all. We had a real-life reindeer outside school, a music production workshop on a double-decker bus, Buoy Meets Krill performed at The Gilpin's Bell, with local reggae band The Royal Sounds closing the festival and receiving an encore from a crowded pub.

It was wonderful to see families and young people happily going from one venue to another, along a high street that residents don't usually feel safe on at night. Our cultural programme aims to change the negative image of Fore Street by championing the amazing work of local businesses, individuals and groups for a safer high street for all in the community.

We look forward to delivering more exciting events in Fore Street in 2023 and beyond. I have recently been hired by Fore Street For All CIC as the curator to manage and deliver the monthly programme of events. We also have two paid part-time trainee positions available and a mentorship scheme, both aimed at local residents.

Find out more about Fore Street For All:

Email hello@forestreetforall.com
Instagram [@forestreetforall](https://www.instagram.com/forestreetforall)
Visit forestreetforall.com

A year to remember at Chickenshed

Susan Jamson recaps a busy year and looks forward to what's to come at the Southgate theatre in 2023

The Christmas and new year period is always very special, exciting and busy for Chickenshed. Our theatre has been packed full of sounds, lights and emotions as we perform our big winter show, *Jack!*, and our early years children shows, *Christmas Tales* and *Christmas Planet Play*.

If 86 performances weren't enough, we've also seen our touring teams piling into our minibus to take shows to those who are not able to visit our theatre in person.

Jack! (which runs until 7th January) has received some amazing four-star reviews in the national press, with *The Guardian* writing "it would take a heart of stone not to be drawn in by this inclusive marvel of a show" and *The Times* describing it as a "giant Christmas show" which "takes fairytale to another level".

We also celebrated being presented with a Variety Club 'Silver Heart Award' for our "outstanding contribution to diversity and inclusion in the performing arts". A cast of 20 performed at Hilton Hotel on 21st November and Chickenshed's creative producer Michael Bossisse and youth theatre member Laura Brady were delighted to accept the award on Chickenshed's behalf.

Laura explained in her speech how it feels to be part of Chickenshed, and how Chickenshed feels to be part of the world. She said: "I joined Chickenshed when I was seven and I was nervous about making new friends. But now I have been there for so many years – I have made lots of friends, as well as being part of awesome theatre."

"At Chickenshed I get a chance to have a voice and express my emotions. I would love for more people to be able

to share this with us. Because everyone deserves to feel comfortable about who they are. And everyone deserves to feel valued for what they can give."

"Performing arts is a place where the imagination can make a change for the world – so, for that reason, the world needs to be able to be part of it."

"I hope that all of you can find a way to have a bit of Chickenshed in your world too."

Chickenshed's outreach and touring programmes have been thriving throughout 2022. Two of our projects – 'Crime of the Century' and 'Day 1 Big School' – have performed or led workshops in more than 40 venues. We have visited schools up and down the country, performed and shared experiences at several conferences, and led workshops in most of Enfield's pupil referral units.

One student offered this feedback: "It was really good and one of the best workshops we've ever done. We talked about all the positive new things that would happen to us, like being more independent and making new friends. And we talked about some things that might worry us like having more homework, peer pressure, getting lost or having new teachers."

As we celebrate 2022, we look forward to all the new productions and adventures that are around the corner in 2023, including two new shows; *A Funny Thing Happened on the Way to the Theatre* being performed in our studio theatre in February and *Rush*, our main house production opening at the beginning of March.

We look forward to welcoming you to Chickenshed in the coming months.

For more information about Chickenshed and to book tickets:

Visit chickenshed.org.uk



Collecting a Variety Club 'Silver Heart Award' on behalf of Chickenshed are the theatre's creative producer Michael Bossisse and youth theatre member Laura Brady



Looking beyond the individual

Lennie Varvarides and Kazimir Bielecki from Enfield arts group Dyspla introduce their latest project working with local schoolchildren

Our new digital art exhibition *DYSPLA_individualism* was created in collaboration with excluded teenagers from Orchardside School in Bulls Moor.

The work was filmed in early 2022 at the school, which acts as a sanctuary for many students who are temporarily excluded from mainstream education. Individualism is the idea that freedom of thought and one's individual actions are the most important qualities of a society, rather than investing in collectivism and building a sense of community. The digital exhibition consists of augmented reality poetic holograms that can be seen on the streets of Enfield Wash.

Orchardside School experienced a tragic loss of a former student who was stabbed outside the school gates in 2021. Young people already know too much about death and exclusion and too many living in Enfield feel isolated and unprotected. These feelings are evident in the poetry slogans the students created on

themes of individualism and their concept of it.

"Trust yourself and look to your own, trust yourself and look to your own."

"Follow me and forget yourself, forget myself. Follow me and forget yourself, forget myself."

"If I want money, I work for it. If I want money, I work for it, I work for my money."

"If I'm the target, you are the target. If I'm the target, you are the target. I'm the target, you are the target."

We found the students to be intelligent, generous and honest with their views on life. These students, ranging from 14 to 18 years, were morally bound, insightful and able to fully commit to exploring solipsistic philosophy, cognitive and social segregation that leads to forms of 'megalothymia' and narcissism.

The school was accommodating and gave us the opportunity to meet and work with many teenagers over the course of the project. Because of funding limitations we were only able to offer further development to three students. We worked with them

to finalise their poetry, which they performed to volumetric cameras – these capture depth information, creating 3D holograms that were manipulated in Blender, which is software used in gaming. The 3D moving images were then placed within a 360° video of various Enfield street scenes, resulting in a triptic of augmented reality prints.

Students shared their world with Dyspla, expressed a need to keep their distance, their lack of trust for authority, fears for their safety, their lack of respect for a system that does not work for them and their ultimate desire to be seen as "the golden child", which influenced our aesthetic choices.

There is an epidemic of separation in our society. Since the late 1970s, politicians have called to escalate the 'dog eat dog' ideology that "there is no such thing as society" and, as a result, we are all losing out. There is an urgent necessity for a coherent community and only as a community can we all benefit individually.

For more information about Dyspla:
Visit dyspla.com

LISTINGS

Submit your listing

We can include low-cost community events taking place in Enfield. For next month's listings, email the details of your event to enfielddispatch@socialspider.com by **Tuesday 17th January**.

POETRY

Enfield Poets

Friday 13th January, 11.30am–6pm
Dugdale Arts Centre, 39 London Road, Enfield EN2 6DS

Enfields Poets present a poetry festival featuring a 'mini poemathon' by Mary Duggan at 11.30am, a film about Jane Austen at 2pm, a film about Charles and Mary Lamb featuring large puppets at 3pm, a play based on poetry by Anthony Fisher at 4pm, a play based on poetry by Valerie Darville at 4.25pm, a reading by Maggie Brooks-Butt at 4.50pm and Costa Poetry Award winner Hannah Lowe at 5.15pm.

Admission £6

Call 020 8807 6680

TREES

Enfield Chase Restoration Project

Fridays and Saturdays starting 13th January, 10am–2pm
Rectory Farm, The Ridgeway, Enfield EN2 8AA

After planting 100,000 trees as part of Enfield Chase Restoration Project over the past two years, Thames 21 is returning to expand the new woodland this year. No experience is necessary, but this will require a good level physical fitness, walking long distances in wellington boots, traversing mud, and bending down. Wellies and spades provided!

Free to join

Call 07568 225 703

Email trees@thames21.org.uk

Visit thames21.org.uk/event

BRIDGE

Duplicate Bridge

Fridays, 1pm–4.30pm
St Stephen's Church (small hall), Park Avenue, Enfield EN1 2BA

We play duplicate bridge, partners not essential.

£3 entry

Call 07810 130884

Chicago Bridge

Fridays, 10am–12pm (Enfield) and every Tuesday, 2pm–4pm (Cockfosters)
Mary Magdalen Church, Windmill Hill (Fridays) and Vita Pax Catholic Church, Bramley Road (Tuesdays)

We play Chicago bridge in a friendly atmosphere.

Free entry

Call 020 8245 2587

FITNESS

Fit For a Fiver

Monday–Thursday every week
Highlands Village Hall, Florey Square, Winchmore Hill N21 1UJ

Fit For a Fiver is a 45-minute outdoor training class designed to be inclusive for everyone. In addition to our classes at Edmonton Sports and Social Club we're now expanding to a second location at Highlands Village Hall. Visit the website for information and to book.

£5 per class

Visit getfitforafiver.com

CYCLING

All Ability Cycling Club

Mondays, 10am–3pm
Bush Hill Park, Cecil Avenue EN1 1PA (near the outdoor gym)

Bikeworks CIC is a cycling-obsessed social enterprise. We believe cycling should be accessible and possible for everyone to enjoy. The drop-in all ability cycling clubs are designed for people with learning, physical and/or sensory disabilities to enjoy cycling on a range of adapted cycles, including single/tandem tricycles, side-by-side cycles for two or more people, wheelchair platform cycles and go-kart style recumbent cycles.

Free entry

Visit bikeworks.org.uk

KNITTING

Knit and Natter

Tuesdays, 10.30am–12pm
Stitch!, Palmers Green Post Office, 364 Green Lanes N13 5XL

Come and join some lovely knitting and crafting chat and share your knitting and sewing projects in a welcoming environment with tea, coffee and biscuits.

Free entry

Email hello@stitch.org

Visit stitch.org.uk

CHOIR

Gospel Choir

Wednesdays, 7.30pm–9pm
Enfield Baptist Church, Cecil Road EN2 6TG

Gospel choir workshops run by Vocally Sound.

£5 per session

Visit vocallysound.co.uk

AROUND THE BOROUGH

ENFIELD HIGHWAY

'Dangerous' man jailed for 'brutal' attempted murder

A "VERY DANGEROUS" MAN WHO attempted to kill an associate during a botched robbery has been jailed for 28 years – with police saying it was "miraculous" the victim survived.

Andrew Marangos, aged 43, was found guilty of attempted murder and two counts of possession of an offensive weapon in a public place following a trial at Snaresbrook Crown Court. He was sentenced immediately to 28 years' imprisonment.

Marangos' victim, who has not been named, was attacked just after 6pm on 11th January 2022 while the pair sat together in a car parked in Swan Way, Enfield Highway. The man in his 60s received multiple injuries after Marangos stabbed him 17 times – 16 times in the back of the head and the neck and once in the right lung, puncturing it. His leg also needed to be amputated



Andrew Marangos **Credit** Met Police after it was slammed in a car door while he attempted to call for help.

Detective Inspector Paul Ridley said: "This was a complex investigation adopting a range of technical and sophisticated policing techniques. It was imperative that Marangos was found before he could harm anyone else."

"The victim sustained some of the worst physical and multiple injuries I have ever encountered in a case of this nature and it was miraculous that he survived."

After Marangos fled from the scene of the crime, a member of the public who was driving by called the emergency services. The victim was rushed to hospital with life-threatening injuries and received emergency surgery.

Detectives subsequently recovered clothing at Marangos's address with the victim's blood on it and found a metal pole and a butterfly knife near to the scene of the crime. Detective Inspector Ridley added: "Marangos is a very dangerous individual and an acute risk to the public, which is reflected by the sentence handed down by the judge. He clearly intended to kill the victim."

EDMONTON

Tower block's gas supply cut over safety fears

BY SIMON ALLIN, LOCAL DEMOCRACY REPORTER

RESIDENTS OF CHESHIRE HOUSE on Shires Estate had to endure freezing conditions without central heating and hot water after their gas supply was suddenly cut off.

People living in the 18-storey block were offered a single electric heater and the use of outdoor shower cubicles during the cold snap in December, as the council worked to install replacement electric boilers.

The gas supply to the 1960s-built Cheshire House was due to be

turned off in January 2024 after it failed a structural safety test. But urgent action had to be taken after a leak was discovered. Edmonton MP Kate Osamor blamed Enfield Council for not addressing long-running problems at Cheshire House much sooner and said residents felt "forgotten".

Speaking during December's cold spell, resident Ema Parkinson said: "We're all freezing. We're having to wrap up in thick jumpers and dressing gowns. My little boy has to sleep in two baby throws, socks and a jumper. We're having to sleep in one room just to keep warm."

"They've given us the option to shower outside, but it's absolutely freezing. It is minus degrees outside in the snow. I have two small children and can't shower them out there."

A council spokesperson said: "Enfield Council's absolute priority is to keep tenants safe and warm [...] For the safety of residents it was absolutely imperative the gas was turned off at Cheshire House immediately upon the discovery of a gas leak. At this point all residents within the housing block were offered alternative accommodation while the situation was addressed."

CHASE SIDE

Railway bridge to undergo 'urgent' repairs

BY SIMON ALLIN, LOCAL DEMOCRACY REPORTER

A RAILWAY BRIDGE FOUND TO be suffering from structural defects is set to undergo repair work.

Network Rail drew up plans to repair and strengthen the bridge

over Chase Green Avenue and aims to begin this summer. Chase Green Railway Bridge is sited within Enfield Town Conservation Area and the borough's local heritage list describes it as having a "detailed and intricate design" and an "ornamental character".

But Network Rail planning documents reveal the bridge is now suffering from a range of defects, including fractures in the structure of the arches. Some of these defects are described as "urgent safety items, presenting a risk to the public". The work is due for completion in May 2024.



Councillor Chinelo Anyanwu (centre) alongside volunteers from Palmers Green Action Team who organised the market, including Liz Robinson (second from right)

PALMERS GREEN

Market helps launch new square

A WINTER MARKET HELPED LAUNCH the borough's newest public square.

Devonshire Square has been created at the junction of Devonshire Road and Green Lanes and is now being used – on a trial basis – as a public space for events and other community uses.

Last month the square's inaugural market took place, with local independent traders invited to sell their wares alongside hot food and live music. Devonshire Square provides extra seating and dining space, a place for "relaxation and repose" and a "focal point to attract people

to the town centre and engage in positive activities".

Created by Enfield Council in co-ordination with Palmers Green Action Team (PGAT), a community group aiming to support the local economy in Green Lanes, the square will remain in place as a trial for 18 months, with a public consultation now open. If it is deemed successful it will be made permanent, with the potential for additional features to be added in future.

Have your say on Devonshire Square and the council's action plan for Palmers Green:
Email towncentres@enfield.gov.uk
Visit letstalk.enfield.gov.uk/palmersgreenap

GORDON HILL

Map showcases 'Gateway to the Green Belt'

Spurs legend Ledley King is presented with a framed copy of the community map by Whitewebbs councillor Hannah Dyson **Credit** Andrew Ridley

AN ARTISTIC MAP SHOWCASING Gordon Hill Station as the "Gateway to the Green Belt" was unveiled by Tottenham Hotspur ambassador Ledley King.

The community map shows passengers arriving at the station where they can go to enjoy countryside walks, spot wildlife and enjoy a beer. The colourful design can now be viewed on the platforms of the station, after being commissioned by the Friends of Gordon Hill Station group and

being designed by illustrator Camilla Charnock. Funding was provided by sponsors Anthony Fisher from Enfield Poets and Tottenham Hotspur FC, with extra help from The Enfield Society and Great Northern Railway.

Friends chair John Cole said: "I want to thank the railway staff for their support and to everyone for coming together to help us promote the Green Belt, the shops and businesses in the area – the top bit of our lovely borough."

Scouting the opposition helps Enfield Town manager Andy Leese prepare a tailored gameplan



Knowing the opposition inside out

Andrew Warshaw meets Enfield Town FC's top scout

Having the opposition watched before matches is a vital part of a team's preparations, even at non-league level, and Enfield Town FC are no exception.

On Saturdays, while the first team are in action, Howard Cowley – Town's chief scout in all but official name – is invariably taking a close look at a future opponent before providing manager Andy Leese with all he needs to know about particular strengths and weaknesses.

Few are more qualified to do the job than Howard who has almost half a century of non-league experience behind him, much of it on the management and coaching side before switching to scouting when, as he put it: "I'd done as much as I wanted but really wanted to stay involved in some way."

The result was linking up with Leese when the latter was manager at Chesham United and helping to contribute to the club's success, not least in the FA Cup. "When Andy moved to Enfield a few years ago, it was a natural progression to come across with him," Howard told the *Dispatch*. "I'm 74 now and although I don't do every game for Enfield, I'm out almost every Saturday and a lot of Tuesdays. You should see the black book I have with all the details on hundreds of players."

To give you an example of Howard's detailed analysis, he watched Hornchurch no fewer than three times before their scheduled December fixture with Enfield



Howard Cowley is the man who does all the homework on Enfield Town's next opponents (ultimately postponed because of the big freeze).

"I always write a report for Andy with a breakdown on each individual player and give my thoughts on how Enfield can best handle them," Howard explained. "I try and work it out two or three weeks in advance in terms of which team I can catch where."

It's a unique insight into just how important the scout is when it comes to a club's preparations. "You have to keep it simple and straightforward," explained Howard who, like so many people involved in non-league football, does it for pure enjoyment. "I spend countless hours thinking about what I'm going to write and, to be fair to Andy, he pays considerable attention to what I say."

Sometimes, of course, all the advice in the world doesn't necessarily work out. "A game plan can last 90 minutes or 90 seconds. Just

because I see a side in action in one game doesn't necessarily mean they will line up the same way."

Howard is modest when it comes to what kind of difference he feels his input makes. "As a previous manager, I know the best preparation in the world may not always work if the game plan isn't followed, or if the opposition changes its shape. I can only provide what I've seen."

Hastings United are one example of how his scouting report paid dividends. "I watched them twice and thought they were very impressive. Then Enfield went and beat them. Ultimately it's down to the players on the pitch but in general I'd like to think the information I give Andy helps him prepare fully. My mantra is that I give Andy the best information I can and it's up to him what he does with it."

Howard's only regret is that by the very nature of the job, he can't get to enough Enfield games. "It's useful to watch them because if I know their own strengths and weaknesses, it helps with what I can provide in terms of dealing with the opposition."

"On the other hand, it's very hard for me to watch Enfield sometimes if they are doing something wrong, bearing in mind I know the opposition inside out. I feel I have to keep away from the dugout, it's not for me to get involved. But it can be hard emotionally to disassociate myself, which doesn't happen when I'm watching the opposition."

Lost passports

My passport has been lost in the Bounds Green area. Name on the passport is Naila Jabar Nasir.
Passport number: A2674734.

If anybody finds this passport please return to:
Iraqi Embassy or contact me on: 07414 171 510

My passport has been lost in the Bounds Green area. Name on the passport is Meran Ahmad Abdullah.
Passport number: A10956208.

If anybody finds this passport please return to:
Iraqi Embassy or contact me on: 07414 171 510

We would like to shout a BIG THANK YOU to all the amazing advertisers who enabled us to publish the Dispatch throughout 2022!

The ones who supported independent local journalism the most:

Local estate superstars: Chamberlains Estates; shopping centre with a community focus: Edmonton Green; sharing their eye-opening art: DYSPLA; keeping us creative: Seasons Art Class Cockfosters & Enfield; inclusive theatre for all: Face Front; educating our youth: Capel Manor College, Haringey Sixth Form, Waltham Forest College, The College of Haringey, Enfield and North East London (CONEL) and Sir George Monoux Sixth Form College; and our little ones: Dorset Hall Nursery; taking care of our elderly: Care UK, Home Instead Enfield; housing rights campaigners Better Homes Enfield.

If you are interested in advertising with us scan the QR code below, send your details to us, and we will follow up!



Or email
klaudia@socialspider.com

WE NEED YOUR HELP



WE ARE LOOKING FOR PEOPLE IN ENFIELD WHO CAN HELP SUPPORT US TO PRODUCE MORE HIGH-QUALITY LOCAL JOURNALISM IN ENFIELD DISPATCH

- We have NO shareholders
- We have NO wealthy backers
- We are run by a small but dedicated team as part of a not-for-profit community interest company
- We hold authority to account, expose scandals, highlight inequality, promote good causes, and provide a platform for local people
- Every penny of income from Enfield Dispatch helps us deliver more journalism in Enfield
- The paper costs nearly £6,000 per month to produce and distribute, but monthly income is under £5,000 currently
- We currently have 160 supporters who contribute around 16% of our income, but we need more!

Can you help us? Our membership scheme has many different options, starting from £3 per month, depending on your ability to contribute. Rewards include having a copy of the paper posted to you every month. Local businesses and charities can also sign up and, from as little as £10 per month, access discounts on advertising.

Find out more at: enfielddispatch.co.uk/join

OUR CURRENT MEMBERS

Derek Grant, Michael Dickinson, Young Notes, Ed Balleny, Natasha Boydell, Elizabeth Crosthwait, Richard Stones, Philip Ridley, Suzanne Beard, Chris Kaufman, Martyn Stogden, Susan Cook, Rupert Price, Meryn Cutler, Andrew Irvine, Basil Clarke, John Naughton, Right at Home Enfield, MumSing Choir, Lloyd Tew-Cragg, Andrew Warshaw, Neil Churchill, Karl Brown, Anthony Fisher, Dan Wright, Kay Heather, Julia Mountain, Jerome O'Callaghan, Carole Stanley, Mervyn Maggs, Aditya Chakraborty, Norman Bennett, Vivien Giladi, Greg Andrews, The Old Enfield Charitable Trust, Matt Burn, Martin Russo, Marilyn Hamilton, Laura Davenport, Mick Wood, Helen Osman, Enfield Over 50s Forum, Francis Sealey, Caroline Banks, Bill Linton, Joe Hickey, William Yates, Petr Mitterbach, Gianni Sarra, Tracy Hughes, Kristiana Heapy, Neil Bachelor, John Crowther, Hannah Salvidge, Sean Wilkinson, Janice Nunn, Julia Daniel, Deborah Dalgleish, Phil H, Dána Roberts, A Cleary, Stephen Evans, Julian Rhys-Williams, Steve King, Robert Pite, Lauri Clarke, Anne Cullen, Ross Cunningham, Diana Goforth, Kirsten Lowe, Seton During, Aurora Yaacov, Sylvia Collicott, Paula Lamont, Liz Wright, Elsie Rigden, Sangeeta Waldron, David Mickleburgh, John Machin, The Enfield Society, Joe Studman, Ryan Hebbs, Adam White, Sue Grayson Ford, Bush Hill Park Residents Association, Zoe White, Carol Fisk, Harriet Ray, Hannah Dyson, Peter Krakowiak, Friends of Hillyfields, Julie Nedza, Lynda Dyson, Phil Gooch, Chris Skilbeck, Peter Campling, Alison Shepherd, Chris Graham, Lindsay Rawlings, Harri Ramanathan, Per Hansen, Carlo Rimini, Jean Christou, Bhasmank Mehta, Sheila Spooner, Harry Redmond, Anita Jena-Smol, Pat Kane, Ben Sulaiman, Jim Shepherd, Graham Halle, Keith Comley, Thomas Whiteway, Anthony Maddox, Neil Littman, Janet Carrick, Tricia Sharpe, Robert Dawes, Paul O'Brien, Richard Mapleston, Malcolm Stow, Graham Cleur, Evan Hughes, Isobel Whittaker, Andrew Murray, Andy Bean, Debbie McVitty, Richard Whitaker, Mark Shaw, Peter Moutell, Jane Maggs, John Cole, Vanessa Wiseman, Caroline Bernard Moxey, Ioannis Chronakis, Caley Montgomery, Sarah Jackson, Liz Gilbert, Edward Smith, Jenny Noon, Josepha Scotney, Amy Williams, Su Fairbairn, Linda Bartell, Fran Holmes, Elizabeth Hart, Helen Menzies, Boyd Goldie, Ann Jones, Alison Parker, Yasemin Brett, John Woodger, Christopher Dey, Vicki Pite, OOD Sadare, Barrie Lane.

