

# ENFIELD DISPATCH

No.56 THE BOROUGH'S FREE COMMUNITY NEWSPAPER

MAY 2023

## NEWS

More homeless families stuck in hotels speak out

P. 3

## ARTS & CULTURE

New art exhibition inspired by David Bowie launches in Edmonton

P. 12

## SPORT

Manager departs after Enfield Town FC miss out on play-offs

P. 15



Performers from Chickenshed Theatre in Southgate stole the show on *Britain's Got Talent* – receiving a 'golden buzzer' from judge Alesha Dixon after moving her to tears. An inclusive cast aged from five to 37 filled the stage with an uplifting three-and-a-half minute performance featuring rapping, singing and dancing that had the audience and judges on their feet with a standing ovation. The golden buzzer means Chickenshed now skip past the bootcamp stage of the competition, sending them straight to the live shows still to come – read more on [enfielddispatch.co.uk](http://enfielddispatch.co.uk) Credit ITV

## Foodbank warns 'it's only getting worse'

BY JAMES CRACKNELL & NOAH VICKERS, LOCAL DEMOCRACY REPORTER

Foodbanks in Enfield are struggling to cope with demand amid the highest rise in food prices for 45 years – with some reporting a four-fold increase in as many months.

Inflation remains in double digits thanks to the rising cost of buying food and drink – with these prices rising nearly 20% in a single year – while an escalating homelessness crisis in Enfield has exacerbated the issue locally.

More and more people in employment are now showing up at the borough's foodbanks and other food services, local providers have said. With 200 homeless families in Enfield holed up in hotels, many also do not have cooking facilities and are therefore in need of hot meals instead of tins and packets of uncooked food.

Dionne John is the co-ordinator of Enfield Food Alliance, a network of 30 local organisations providing food support locally. She told the *Dispatch*: "People are reluctant to take certain

types of food because they are thinking about how they will heat it up or cook it – increased numbers are coming from hotels where they have no access to cooking facilities.

"The voluntary sector is now being asked to provide hot meals rather than just the usual groceries. We need to have a clear understanding as a borough of how we are going to deal with it."

Dionne added that she wants more local organisations providing food to struggling families to be involved in coming up with solutions. Being able to use empty premises to provide "pop-up food provision" could be one answer, she says.

Cooking Champions is a social enterprise which provides food parcel deliveries and free weekly hot lunches from their kitchen in Ponders End. Founder Clare Donovan said their rate of referrals had risen by 300% between November 2022 and March this year.

"More people that are working are struggling," she told the *Dispatch*. "There is this stigma that people should just work more

hours or get better jobs [instead of using foodbanks] but that is not the reality for people.

"They have feelings of guilt and shame – they feel they have failed. We are getting more cases of people suffering mental health issues such as depression and addiction.

"We started Cooking Champions to help people during the Covid-19 lockdown but there is no sign of this situation improving, it is only getting worse."

Clare added that they had been forced to change their operation at Cooking Champions to now provide food for people on a limited four-week rotation, to manage the influx of referrals and continue to ensure everyone at least gets some form of help.

Cooking Champions relies on donations and is currently appealing for people who can support them with a monthly £5 donation – which covers the cost of providing an individual with weekly food parcels for four weeks.

Meanwhile, a report on food poverty published by the London

Assembly welcomed mayor Sadiq Khan's pledge to provide free school meals to all London primary school children throughout the next academic year – but warned "a long-term solution to the problem" of food insecurity was also needed. The report calls on Khan to work with the government and local councils to expand free school meals once his own funding comes to an end – and urges the government to restore the £20 uplift of Universal Credit.

Lib Dem assembly member Hina Bokhari said: "Food insecurity is not a new phenomenon for households on low incomes, but the current cost-of-living emergency is making this situation much worse for many Londoners."

A Department for Work and Pensions spokesperson said: "We are committed to protecting the most vulnerable which is why we have uprated benefits, including Universal Credit, by 10.1% this month [April] and have provided more than £94 billion over 2022/23 and 2023/24 to help people with higher bills – an average of over £3,300 per household."



[enfielddispatch.co.uk](http://enfielddispatch.co.uk)



[enfielddispatch@socialspider.com](mailto:enfielddispatch@socialspider.com)



[@EnfieldDispatch](https://twitter.com/EnfieldDispatch)



[@EnfieldDispatch](https://www.instagram.com/EnfieldDispatch)



[/EnfieldDispatch](https://www.facebook.com/EnfieldDispatch)

CHAMBERLAINS  
ESTATES  
020 8366 3551  
[chamberlainsestates.com](http://chamberlainsestates.com)

The Dispatch is supported by Chamberlains Estates – turn to page 5

# ED.

**No.56**  
**MAY 2023**

Enfield Dispatch is the borough's free community newspaper. We publish monthly and distribute 15,000 free copies of each issue

**Publisher**  
David Floyd

**Editor**  
James Cracknell

**Designer**  
Jonathan Duncan

**Head of Advertising**  
Klaudia Kiss

**Local Democracy Reporter**  
Simon Allin

**Contributors**  
Janice Nunn, Nick South, Freya van Lessen, Neil Littman, Andrew Warshaw, James Quinlan

## CONTACT

Call 020 8367 2975

Email [EnfieldDispatch@socialspider.com](mailto:EnfieldDispatch@socialspider.com)

Post Nicholas House, River Front, Enfield EN1 3TF

## ADVERTISING

Call 07732 000 430

Email [klaudia@socialspider.com](mailto:klaudia@socialspider.com)

**For licensing enquiries:**  
Email [licences@socialspider.com](mailto:licences@socialspider.com)

Enfield Dispatch is published by Social Spider Community News:

Visit [socialspidercommunitynews.co.uk](http://socialspidercommunitynews.co.uk)



Enfield Dispatch is regulated by the Independent Press Standards Organisation (IPSO). For more information on the Dispatch's complaints policy and how to make a complaint visit: [enfielddispatch.co.uk/complaints](http://enfielddispatch.co.uk/complaints)



## Council set to decommission Edmonton tower blocks after residents vote to leave

BY SIMON ALLIN, LOCAL DEMOCRACY REPORTER

**T**wo Edmonton tower blocks where gas supplies had to be switched off over safety fears are set to be taken out of use – and likely demolished.

Senior councillors agreed to decommission Cheshire House and Shropshire House at Shires Estate, Edmonton, after more than three quarters of residents who responded to a survey said they wanted to leave the estate.

The council plans to rehouse residents within a year and pledged to start discussions as soon as possible with leaseholders “to ensure the timely buy-back of their properties”.

Built in the 1960s using the cut-price large panel method of construction, the two 18-storey tower blocks failed structural safety tests carried out following the Grenfell Tower tragedy and were deemed to be at risk of collapse in the event of a gas explosion.

The council previously planned to connect both blocks to its district heat network, Energetik, and the date for switching off the gas supply was extended from June this year to January next year.

But in November, the gas supply to Cheshire House had to be cut off urgently after a leak was

discovered. The council subsequently announced it planned to switch off the supply to Shropshire House by the end of February.

The civic centre’s handling of the safety issues has been heavily criticised by Conservative opposition councillors – who previously called on cabinet member for housing George Savva to quit over the issue – as well as Edmonton’s Labour MP Kate Osamor.

During a cabinet meeting last month, members of the council’s Labour administration agreed to decommission the blocks “subject to the safe rehousing of all residents”. According to a council report, there are almost 200 people currently living in the blocks.

The decision, which is subject to a call-in from the overview and scrutiny committee, came after a four-week engagement exercise carried out during February and March found 76% of the 115 residents who responded wanted to leave the estate and only 11% wanted to stay.

Many expressed the need for significant repairs, highlighting mould, damp and leakages throughout their properties, while other concerns included a “significant increase in antisocial behaviour”.

Council reports state that keeping the blocks in a state of safe repair over 30 years would cost around £53million, with £40m

needing to be spent during the next three years. This would place a “considerable financial burden” on leaseholders and reduce funds available to be invested in other council homes.

Moving people out and decommissioning the blocks would cost significantly less – estimated at £16.7m – and was said to be the “only viable and feasible option”.

The council says dedicated officers will be deployed to support residents to identify their housing options and to help them move home, with priority given to the most vulnerable who may need extra support. It has pledged to provide access to legal and surveying costs associated with buybacks for leaseholders, who will also be helped to move.

Cllr Savva told last month’s meeting that the report would provide residents with “certainty about the future” and “protect the investment for the rest of the homes across the borough”. He added that demolition of the blocks would be considered.

Joanne Drew, the council’s director of housing and regeneration, said officers were “very confident” that the residents of the blocks had understood the options, pointing out that during the engagement exercise literature had been translated into the languages of those who did not speak English.

## Labour wins by-election



**L**abour retained one of its two seats in Bullsmoor ward following a by-election prompted by a councillor’s resignation.

Destiny Karakus was elected to represent Bullsmoor alongside existing Labour councillor Kate Anolue. It followed the resignation of Erin Gunes in March, for personal reasons.

While both Labour and the Conservatives increased their vote share in the ward compared with last year’s borough-wide local election, the Tories managed to reduce the gap between the parties from 21.4 percentage points in 2022 to 19.6 points now.

This came at the expense of the Green, Liberal Democrat and Trade Unionist and Socialist Coalition candidates, who all saw their vote share decline.

Newly-elected Cllr Karakus said she was proud to become the youngest Labour councillor in Enfield and added: “Thank you to all comrades who helped and residents who voted.”

In her pitch for votes prior to the by-election, Cllr Karakus had said she was “passionate about making Enfield cleaner, greener, and safer” and would prioritise tackling fly-tipping, antisocial behaviour and creating opportunities for young people.

Despite Tory candidate Christine Bellas coming up short, Conservative group leader Alessandro Georgiou claimed the Bullsmoor by-election still saw a positive result for his party and said: “As far as I’m concerned this is a brilliant result for Conservatives in Enfield and if replicated at the next council election in 2026 we would win!”

RESULTS	
<b>Destiny Karakus, Labour Party:</b>	1,056 votes (55.8%)
<b>Christine Bellas, Conservative Party:</b>	686 votes (36.2%)
<b>Isobel Whittaker, Green Party:</b>	81 votes (4.3%)
<b>Tim Martin, Liberal Democrat Party:</b>	50 votes (2.6%)
<b>John Dolan, Trade Unionist and Socialist Coalition:</b>	20 votes (1.1%)
<b>Turnout:</b>	25.84%

# More homeless families stuck in hotels speak out

The Rembikowski family are among hundreds currently being forced to live in hotels by Enfield Council as it struggles to find suitable temporary accommodation

BY JAMES CRACKNELL

**T**wo homeless families from Enfield have spoken of their despair at living for months in hotels – including a family-of-four whose house burned down last summer.

Disabled dad Piotr Rembikowski and his family have been living at Enfield Travelodge on the A10 after a fire at their house in Palmers Green last August, with even their German shepherd forced to live with them in the hotel.

They are one of around 200 local families currently living in hotels as Enfield Council struggles to fulfil its statutory duty to house people declaring homelessness – following a sudden drop in the availability of affordable private rented accommodation.

“I have no hope left,” Piotr told the *Dispatch* last month. “We have had no help from the council – we are stuck here.”

The amount of money the council is spending on commercial hotels for homeless families – dubbed ‘bed and breakfast’ (B&B) accommodation – has risen ten-fold in under a year and recently surpassed £500,000 per month.

Rising rates of evictions and a severe lack of cheap homes to rent have been said to have created a “perfect storm” in the borough, with Edmonton MP Kate Osamor also describing it as an “emerging humanitarian crisis”.

Piotr is living at Enfield Travelodge with his wife Magda and two sons Alan, aged 15, and Natan, aged 20, who is studying at university. They are occupying two rooms at the hotel and are even joined by their dog Apollo.

The Rembikowski family’s Palmers Green home burned down on 14th August 2022 after being set alight by a fire that spread from a nearby construction site. It forced the family to declare themselves homeless as their landlord had nowhere else to move them to and local rents had become too expensive. Piotr was treated for smoke inhalation from the blaze and had also only recently been left without the use of his legs after an accident on a bus in April last



At their room in Enfield Travelodge (from left) are son Alan, dog Apollo, mum Magda and dad Piotr

year – an injury that forced him to give up his career in carpentry.

Piotr’s rehabilitation from the accident has also been disrupted because his physiotherapist cannot treat him in the hotel.

Magda works as a housekeeper but her salary is not enough to support the whole family, while Piotr’s monthly disability benefit amounts to less than £250 at present. Alan is an aspiring footballer currently training with Chelsea Foundation and Natan is a student at The University of West London.

“My wife is working like crazy but then they stopped our [housing] benefit because they said she earned too much.

“The council tried to move us to the eleventh floor of a block of flats in Ponders End – what would I do if the lift broke or there was a fire? How can I get out? We had to refuse it.”

The only other accommodation the family have been offered away from the hotel was a flat in Manchester, which would disrupt Alan and Natan’s education.

The Rembikowski family’s seven-month

hotel stay greatly exceeds the six-week legal limit for local authorities forced to place families in so-called bed-and-breakfast accommodation while a property can be found for them, but they are among many who have endured agonising waits to be rehoused.

A significant number of them are holed up at Enfield Travelodge, which the *Dispatch* visited last month after previously meeting the Ramazani family there in March. The hotel has dozens of rooms being occupied by homeless families and Piotr said children often resort to playing in the hotel’s car park – beside a dual carriageway – because there is nothing else for them to do.

Away from the Travelodge, a single mum who is 28 weeks pregnant has been put up in an East London hotel with her six-year-old child. In January the pair fled a domestic abuser in Edmonton and declared themselves homeless as a result.

The mother told the *Dispatch*: “I was in a domestic violence relationship for five years – my partner put a knife to my throat. I have got depression and anxiety and I get

panic attacks.

“There are no cooking facilities and no washing facilities for my clothes here. My son has put on 10kg in weight – I can’t keep giving him takeaways.

“I have gone without food myself because I want him to have food and Uber Eats is really expensive.”

She added: “We are being treated like animals – I have had enough.”

Both families spoken to by the *Dispatch* said their council caseworkers had done little to assist them and had treated them dismissively.

Labour MP Kate Osamor said: “Across Enfield and London we are seeing an emerging humanitarian crisis, which is being ignored by Tory politicians in Westminster.

“In the last few months there has been an explosion in the number of my constituents being made homeless and spending months crammed into hotel rooms. That’s unacceptable and avoidable.

“Both local and national government need to wake up and treat this like the emergency it is.”

Kate also raised the issue in the House of Commons and asked a minister from the Department for Levelling Up, Housing and Communities whether the government would raise the Local Housing Allowance – which determines local housing benefit levels – to match inflation.

Conservative minister Felicity Buchan responded: “We have made clear to local authorities that B&Bs are a last resort.”

A council spokesperson said: “The reality is that the whole of London is experiencing a housing crisis and across London over the past year, homeless families approaching local councils for help has increased by 17.5%.

“To make matters worse, Enfield Council is competing with 21 other London boroughs and the Home Office, who all look for homes in Enfield. The council uses 2,000 homes in the private rented sector locally to house people, but at least 6,000 in the borough are used by other councils and government departments.

“In February this year alone, 464 homeless families approached the council for help, compared to 196 in October 2021.

“Enfield Council is committed to reducing the numbers it places in hotels, including a new rapid rehousing hub, and is exploring [...] placing homeless people further from home where the market is more affordable. But the housing challenge in the borough requires national action to address the fundamental shortfall of affordable housing.

“The government’s decision to not increase Local Housing Allowance has consigned people to poorer and poorer standards of accommodation.”

**“There are no cooking facilities and no washing facilities. My son has put on 10kg in weight – I can’t keep giving him takeaways”**

The 'dementia friends' programme is the biggest-ever initiative to change perceptions of dementia



## Being open about dementia

### Janice Nunn from Enfield Dementia Action Alliance on what's planned for this year's Dementia Action Week

**E**nfield Dementia Action Alliance and Alzheimer's Society are teaming up to encourage people in the borough with concerns about their memory to seek an assessment ahead of Dementia Action Week this month.

The alliance is hosting events for people affected by dementia and to raise awareness among the general public about the importance of confronting symptoms when they appear, shining a light on the work done by Enfield's 'dementia friends' and providing residents with information to help them plan for the future.

The dementia friends programme led by Alzheimer's Society is the biggest-ever programme to change perceptions of dementia. It aims to transform the way the nation acts, thinks and talks about the condition and, since launching in 2013, more than 3.5 million people across the UK have joined to create change in their communities.

From the taxi drivers to hairdressers, the bus company to newsagent,

everyone can identify things they can do to support those with dementia to continue living as independently as possible. That is why the dementia friends programme is crucial.

An Alzheimer's Society survey showed three out of five people with dementia wish they had got a diagnosis sooner, and 23% in London lived with the condition for more than two years, after first noticing symptoms, before diagnosis.

***"Memory loss is not just a normal part of ageing – as many assume"***

Denial is a big reason why people put off seeking a memory assessment with 42% of Londoners with the disease admitting to choosing to ignore worrying signs. But being diagnosed with dementia at an early stage gives you a chance to adjust and unlock the door to things you need such as access to practical guidance, legal advice or financial support.

Memory loss is not just a normal part of ageing – as many assume. Nine in ten people with dementia said they benefitted from getting a diagnosis. There are almost 80,000 living with dementia in the capital and while it mainly affects people over 65, around one in 20 people with dementia are under 65.

Events taking place for this year's Dementia Action Week in Enfield include an immersive arts experience at Park Avenue Disability Resource Centre on Tuesday,

16th May from 2–3pm; an information stall about dementia in Palace Gardens Shopping Centre on Thursday, 18th May from 10.30am–2pm; plus a dementia friends information awareness session from 10–11am followed by a talk on lasting power of attorney at Elsyng House Care Home on Friday, 19th May from 11.30am–12.15pm.

Find out more about events taking place in Enfield during Dementia Action Week:

Email [janice.nunn@hotmail.com](mailto:janice.nunn@hotmail.com)

To book a place on the dementia friends information awareness session: Email [clientrelations.eh@oaklandcare.com](mailto:clientrelations.eh@oaklandcare.com)

## An eggs-traordinary story of goodwill

BY NICK SOUTH

**T**his is the story of a raffle with a difference. Or, to be precise, 53 raffles each with the prize of a large Easter egg donated by Edmonton Rotary Club.

Apart from a gap caused by the pandemic, this project has been running for ten years. Like many ongoing projects, it began as an intended one-off.

"The original idea was to donate one huge egg to the children's ward at North Middlesex Hospital," says Chandu Patel, the mastermind behind the current annual event. "A seven-kilo egg was made especially for us by a master chef. The children thought it was wonderful but there was far too much chocolate for even a ward full of kids to consume. You can imagine the mess they made! A lot of the egg was wasted and had to be thrown away."

That was in 2009. A few years later, with a similar budget, Chandu introduced a new version of the scheme. "We felt the money could be made to go further. So, instead of one seven-kilo egg we opted for seven one-kilo eggs, each of which we gave to a local primary school. Each school would then raise its own funds by raffling the egg."

It worked. Success breeds popularity, and word soon got around. Each year there are more and more schools wanting to take part, not to mention scout and guide groups. But how could we satisfy the growing demand without the cost spiralling?

Chandu continues the story: "We talked to local businesses such as Jemca Toyota, restaurants and pubs such as The Beehive, and The Winchmore where we hold our weekly meetings, to ask if they would each raffle an egg on our behalf. We provide the egg, a poster, raffle tickets and a collecting pot. The money these sponsors raise comes back to Rotary and is used to buy the Easter eggs the following year. In this way the project became self-funding."

"However, increasing demand means that we now need more sponsors to help us cover the cost of the eggs – we bought 53 this year!"

Sourcing oversized Easter eggs can be a challenge. Even though 53 kilos of chocolate might sound like a lot, it was too small an order to interest the major manufacturers. Until last year the eggs were supplied by a small company in Italy, but this is no longer viable due to shipping delays. Fortunately, we found an alternative supplier in Kent, and this year's eggs were made in the UK. They're 50% bigger, too.

Let's end the story where it began. We haven't forgotten the children at North Middlesex Hospital. Each year, we donate to the hospital enough standard-size chocolate eggs for each child on Starlight Ward to receive their own Rotary Easter egg.

For more information about Edmonton Rotary Club and to get involved: Visit [edmontonrotary.org.uk](http://edmontonrotary.org.uk)



Eimear Walsh, owner of The Winchmore, and Chandu Patel with the pub's Rotary egg

Advertisement

- All gardening work undertaken
- All fencing work
- All slabs supplied and laid
- All driveways block paving
- All overgrown gardens cut and cleared
- All tree work undertaken

Please call John for a free no obligation quote 07435 168 858 mobile 020 8502 7594

### ENFIELD FAIR WHOLESALE

We are looking for a part time sales colleague to sell organic food and drinks products into retail stores in the London area.

Earn basic pay as well as recurring commission on all sales, allowing you to build a growing income stream. We offer full training to enable you to succeed in the job.

To apply please email [team@enfieldfair.co.uk](mailto:team@enfieldfair.co.uk)

TO SEE OUR RANGE OF PRODUCTS PLEASE VISIT [WWW.ENFIELDFAIR.CO.UK](http://WWW.ENFIELDFAIR.CO.UK)

# CHAMBERLAINS

## E S T A T E S

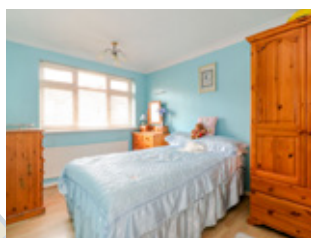
Get moving this spring with Chamberlains! Call us today on 020 8366 3551 to find out how we can help your next successful move



REDUCED PRICE

CHAIN FREE

THREE BEDROOM BEDROOM SEMI DETACHED HOUSE – EPC C  
Tenniswood Road, Enfield, Middx EN1 £510,000 Freehold



NEW LISTING

SOLE AGENTS

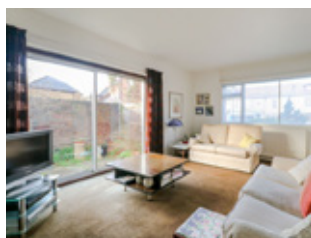
THREE BEDROOM MID-TERRACE FAMILY HOME – EPC E  
Acorn Close, Enfield, Greater London EN2 £500,000 Freehold



CHAIN FREE

SOLE AGENTS

AN EXTENDED FOUR BEDROOM FAMILY HOUSE – EPC D  
Baker Street, Enfield EN1 Offers in excess of £500,000 Freehold



NEW LISTING

SOLE AGENTS

TWO BEDROOM FIRST FLOOR MAISONETTE WITH OWN GARDEN – EPC C  
Weston Road, Enfield EN2 £325,000 Leasehold



NEW LISTING

SOLE AGENTS

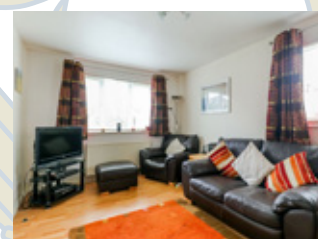
SECOND FLOOR PURPOSE BUILT ONE-BEDROOM APARTMENT – EPC D  
Harris Close, Enfield, Greater London EN2 8BB £285,000 Leasehold



NEW LISTING

SOLE AGENTS

ONE BEDROOM GROUND FLOOR APARTMENT WITH 155 YEAR LEASE – EPC C  
Gladbeck Way, Middx, Enfield EN2 £275,000 Leasehold



# Cut to affordable homes at council-owned Meridian Water sites 'absolute disgrace'

Enfield Council insists 40% of total homes at regeneration site will still be designated as affordable

BY SIMON ALLIN,  
LOCAL DEMOCRACY REPORTER

The leader of Enfield Council insists plans for Meridian Water have not changed despite a new report showing a reduction of homes on council-owned sites – with a lower percentage of affordable housing.

Council leader Nesil Caliskan said plans for the flagship Edmonton regeneration scheme “remain the same” – including a pledge to build 10,000 homes in total and ensure 40% of these are classed as affordable.

But an updated financial model indicates the number of affordable homes set to be built on council-owned sites at Meridian Water had dropped from the 3,846 forecast in 2019 (39.5% of the 9,725 total) to 3,569 now being forecast in 2023 (38.9% of a reduced 9,182 total).

The loss of 277 affordable homes from the new financial model was branded an “absolute disgrace” by Conservative leader Alessandro Georgiou, who also criticised what he claimed was slow progress on the regeneration scheme.

But during a cabinet meeting last month, the acting director of the Meridian Water project, Penny Halliday, emphasised that the report referred to council-owned land only and claimed the authority remained “on track” to exceed the 40% affordable housing target because the masterplan included third-party sites currently owned by Ikea and Tesco.

Penny explained that there had been an increase in non-residential floorspace to “maximise the quality employment and commercial space to ensure we get those quality jobs available for local people”.

The report explains the scheme’s new financial model has had to be revised following “unprecedented inflation” caused by “Covid, Brexit and other global and domestic events” which pushed up construction costs.

It states that the 2019 financial model assumed 702 homes would be built on the car park of Swedish furniture company Ikea, which owns a now-closed store within the regeneration zone. It adds that this site has the capacity for 2,000 homes, meaning the council’s overall target of 10,000 homes at Meridian Water could be exceeded.

Ikea is expected to advertise the site for sale during the autumn, and the report acknowledges that it could be bought by an organisation that does not share the council’s development aims. The council plans to reduce this risk “by a regular positive dialogue with the Ikea management team”.

The report also reveals plans to market four development sites within the regener-



ation zone this year, while ten-year capital spending at Meridian Water is set to rise from £326million to £368.6m, with £202m of this funded by borrowing.

Construction works funded by £170m from the government’s Housing Infrastructure Fund (HIF) have been unable to start on site, however, as inflation means the schemes cannot be delivered “within the funding envelope”. The council is now lobbying the government for extra cash.

It adds that the Meridian Water masterplan has “gone through several iterations” since 2018 and will “continue to evolve”. However, the council still gave no details of when the new masterplan would be published. The only published version of

the masterplan was approved in July 2013, when the scheme was expected to be half its current size, and there have been repeated calls to make the updated version public.

Cllr Georgiou said the Conservatives believed the council was “downplaying” the amount of capital spending required over the next ten years. He also suggested the administration was holding back information on Meridian Water, including the assumptions that lie behind the capital programme.

In response, Cllr Caliskan said the council’s plans for Meridian Water “remain the same, and will deliver even more affordable homes on council land than previously planned for, with just under 10,000 new homes at 40% affordable levels”.

## Wait goes on for borough’s big housing schemes to deliver

BY SIMON ALLIN,  
LOCAL DEMOCRACY REPORTER

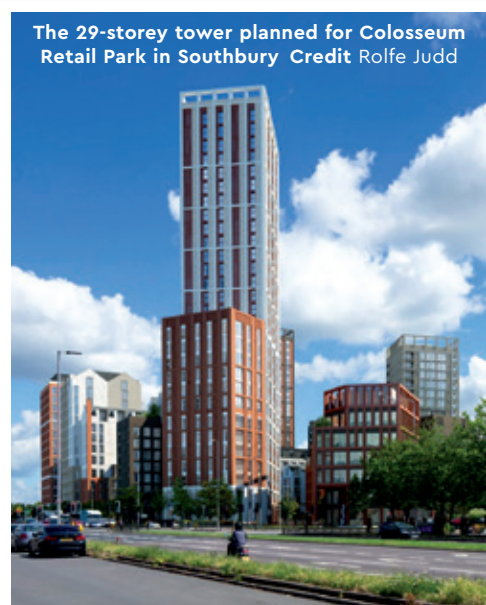
Work on a major development of 1,800 homes has yet to begin two-and-a-half years after being approved – while another big scheme in the borough faces a legal challenge.

The redevelopment of Colosseum Retail Park in Southbury is one of several large schemes with planning permission in Enfield that have yet to begin construction.

Another is the plan to redevelop Edmonton Green Shopping Centre to provide more than 1,400 homes, which is now facing a legal challenge from supermarket chain Asda.

It comes as Enfield Council continues to face added pressure to approve new residential schemes after failing to meet its housebuilding targets.

After the council’s planning committee approved the Colosseum scheme in September 2020, the civic centre granted formal planning permission to developers Blackrock and NEAT Developments in July



2021. Set to provide a series of housing blocks between six and 29 storeys tall, the development was criticised for being “too dense” and providing only 30% affordable homes – below the council’s 40% target.

But the only sign of progress is the reloca-

tion of B&Q from Colosseum Retail Park to neighbouring Enfield Retail Park, in December last year. Although the reasons for the hold-up are not known and the developers have not commented, the construction sector has been hit by significant price inflation over the past year.

The Edmonton Green Shopping Centre scheme will see the existing 1960s-era malls demolished to make way for new shops and tower blocks up to 30 storeys high. Despite being approved by the council’s planning committee in December 2021, formal planning permission was only granted to developer Crosstree Real Estate Partners in November 2022.

But a council report has now revealed supermarket chain Asda has applied for a judicial review of the decision, with a court hearing due to take place on 27th June. Asda has declined to comment but plans for the redevelopment include the demolition of an access road and parking ramp serving the car park on the roof of the supermarket. The council’s planning report states Asda

objected to the loss of car parking and lack of certainty over its re-provision. It said it would have “a significant impact on Asda customers and trading performance”.

A council spokesperson said: “These are complex projects often requiring other consents and permissions to be obtained. Both developments will be delivered over many years and council officers remain in regular contact with both developers.”

“The council acknowledges the difficulties posed by the current economic climate and rising construction costs.”

Other Enfield schemes where work has yet to commence include the Southgate Office Village scheme set to provide 216 homes, approved via appeal in December 2021; plans for 148 flats in Green Street, Brimsdown, approved by planning committee in January 2021; and the redevelopment of a former gasholder in New Southgate to provide 182 homes, approved by planning committee in December 2021.

The developers from all schemes mentioned were approached for comment.

Waltham Forest College 

think  
**BIG**

# OPEN EVENTS

17<sup>th</sup> May & 7<sup>th</sup> June, 4pm-7pm

**Join us at our Open Event!**

Guided Campus Tour

Chat to Students and Staff

Interactive Taster Events

Apprenticeship Workshops

Admissions Advice and Guidance

Apply for a Course



▶ Visit [waltham.ac.uk](https://waltham.ac.uk) or scan the QR code to register.

☎ 020 8501 8501

✉ [myfuture@waltham.ac.uk](mailto:myfuture@waltham.ac.uk)

📍 707 Forest Road, Walthamstow, E17 4JB





Newly refurbished spaces

# Be who you've always been... a star baker

At Elizabeth Lodge care home being a star baker doesn't stop when you make the journey into care. Bring your life with you to a place you can call home.

Award winning, person-centred care for over 40 years.

If you're considering care for yourself or a loved one call **020 3993 4878**.



Trusted to care.

Elizabeth Lodge care home  
Enfield  
[careuk.com/elizabeth-lodge](https://careuk.com/elizabeth-lodge)

care UK



# ADVERTISE WITH US

Our newspapers are a growing and valued part of the local community – loved by readers who want to read about what matters to them. Be part of that and advertise with us!

Our publications *Haringey Community Press*, *Barnet Post*, *Waltham Forest Echo*, *Enfield Dispatch* and *EC1 Echo* cover a wide area of North London and part of The City.

For the borough of Enfield, we distribute 15,000 free copies to readers via news stands, community venues, and door-to-door, with a total estimated readership of 45,000 people.

Call **Klaudia** 07903 212 659  
Email [klaudia@socialspider.com](mailto:klaudia@socialspider.com)

Advertisement

## KUMON

MATHS ENGLISH

# FREE REGISTRATION

1 - 31 May

Your local Instructor will conduct an individualised maths and English assessment explaining how Kumon can develop your child's confidence, skills and abilities.

## Enfield Lock Study Centre

[kumon.co.uk/enfield-lock](http://kumon.co.uk/enfield-lock)

01707 550524

Terms and conditions apply. Fees vary. Participating study centres only. Please refer to your local study centre. Subject to availability.

NEW  
CENTRE  
NOW  
OPEN

# LETTERS

## Send us your letters

Got an opinion on something in Enfield? We accept letters of up to 150 words from people and organisations in the borough. Email [EnfieldDispatch@socialspider.com](mailto:EnfieldDispatch@socialspider.com) before the next deadline on **Monday 15th May**.

## Mayor must U-turn on Ulez

*Dear Enfield Dispatch*

From August this year, Londoners will experience the start of the harshest anti-private vehicle campaign ever seen in the capital. Under the mayor's extended Ultra Low Emission Zone (Ulez) scheme, new restrictions on older private vehicles come into force across London, including Enfield. Everyone will be affected, directly or indirectly. Several hundred thousand owners of perfectly sound older vehicles that passed their MOT will have to sell, or pay £12.50 per day to use the roads they already paid a licence to use.

Disruption will extend widely to all sectors, especially frontline services, social and health workers, many dependent on their cars to fulfil shift work. The mayor tells us to use public transport, walk, cycle – or find the money to buy a newer model.

The impact on lower-income families and all businesses will be heavy. Being forced to trade vehicles costs many thousands of pounds, money most do not have, so must incur debt. The mayor's so-called scrappage scheme is so poorly funded nobody will be fully compensated for their losses on disposal of older cars. The majority of his revenue gains, hundreds of millions of pounds, are for his coffers, not to help those most disadvantaged by his policies.

Additional costs for the family budget at this time are the last straw for all. Putting food on the table and keeping mobile at low cost is far more important than pursuing an ethereal pollution target.

This is not the end of the story. The mayor is planning soon to use numberplate cameras to charge all road users per mile to use London's roads, from wherever they originate. The impact will be severe and damaging to livelihoods, family finances, service provision and many aspects of life. For many it will be a tax on personal freedom of movement. None of it is mandated by popular vote, of course. The mayor did hold a consultation on Ulez expansion but decided to proceed even before the votes were in, and the vote itself was negative, but what the heck.

**Peter Gibbs**

*Vice president, Federation of Enfield Residents and Allied Associations*

## Get walking

*Dear Enfield Dispatch*

Our councillors need to prioritise improving our streets in the upcoming years to help people choose cleaner and healthier ways to travel.

The benefits of people walking more are plentiful, from increased physical activity and better health to reduced congestion and cleaner air.

Ahead of National Walking Month this May, walking charity Living Streets has set out seven steps to create better places for walking in their 'Blueprint for Change'. Steps include maintaining pavements, improving pedestrian crossings, and investing in public transport. You can read more about this at [livingstreets.org.uk/blueprint](http://livingstreets.org.uk/blueprint).

All these measures can make walking a safer and more attractive option and help bring our communities and streets to life.

It's time to give walking the priority it deserves.

**Parus Shah**  
*Enfield Lock*

Advertisement

### Goods Vehicle Operator's Licence

**Ala Wholesale Ltd of Office 5 36 Queensway Enfield, England, EN3 4SA** is applying for a licence to use **Crewshill Nurseries, Theobalds Park Road, Enfield, EN2 9BH** as an operating centre for **3 goods vehicles and 1 trailer**

Owners or occupiers of land (including buildings) near the operating centre (s) who believe that their use or enjoyment of that land would be affected, should make written representations to the Traffic Commissioner at Hillcrest House, 386 Harehills Lane, Leeds, LS9 6NF, stating their reasons, within 21 days of this notice. Representors must at the same time send a copy of their representations to the applicant at the address given at the top of this notice. A Guide to Making Representations is available from the Traffic Commissioner's office.

### LICENSING ACT 2003 Notice of Application for a New Premises Licence

Notice is hereby given that **Mr Arjan Elezi** has applied to the Licensing Authority of London Borough of Enfield for a Premises Licence to permit:

- **Retail Sale of Alcohol: 10.00–22:30 Sunday to Thursday; 10.00–00:30 Friday to Saturday**
- **For the premises Bujani Café Bar and Lounge**
- **Situated at 89 Green Lanes, Palmers Green, London N13 4TD**

The public register where applications are available to be viewed by members of the public can be accessed online by visiting <https://new.enfield.gov.uk/services/business-and-licensing/> and following the link to the Licensing Register. Email [licensing@enfield.gov.uk](mailto:licensing@enfield.gov.uk) to request a copy of the application within 28 days from the date of this notice.

Any person wishing to submit relevant representations concerning this application must give notice by emailing [licensing@enfield.gov.uk](mailto:licensing@enfield.gov.uk), giving in detail the grounds of the representation no later than: 19th May 2023

Representations received by post will not be accepted. Representations must include your full name and address. Representations must relate to one or more of the four Licensing Objectives: the prevention of crime and disorder, public safety, the prevention of public nuisance and the protection of children from harm. It is an offence, under section 158 of the Licensing Act 2003, to knowingly or recklessly make a false statement in connection with an application for a premises licence. A person guilty of an offence is liable on summary conviction to a fine not exceeding level five on the standard scale.

**Dated:** 21st day of April 2023

# LTN boundary road traffic increases understated due to 'software issues'

Traffic on Fox Lane LTN boundary roads rose by 8% rather than 5.7% but still not enough to change council decision on scheme

BY SIMON ALLIN,  
LOCAL DEMOCRACY REPORTER

Enfield Council has blamed software issues for undercounting slow-moving vehicles during a low-traffic neighbourhood (LTN) trial.

The council has admitted traffic moving below 6.2mph in congested roads had not been recorded following the introduction of the Fox Lane LTN because a software update had changed the setting of its traffic counters.

After re-running the data to account for the slow-moving vehicles, the council said it changed the result from a 5.7% rise in traffic on boundary roads to an 8% increase – but this “did not alter the original decision to make the project permanent”.

LTNs were introduced by the council

to tackle air pollution and stop drivers “rat-running” through residential streets. But the schemes have proved divisive, with opponents claiming they merely push traffic and pollution onto boundary roads.

A report published by the council in November stated that the undercounting issue “arose from an incorrect default setting applied to the contractor’s equipment when the baseline data was collected in 2019”.

The revised data taken to correct the error showed increases in 24-hour traffic flows on boundary roads ranging from 4% in Aldermans Hill to 15% in Southgate High Street.

Conservative councillor Maria Alexandrou, shadow cabinet member for climate change, says she believes the council would still have gone ahead with the LTN even if the increase was higher than 8% because it has an “anti-car agenda”.

“They [the council] do not want to discuss it any more,” she added. “They say it is done.”

Figures obtained by Cllr Alexandrou reveal the council has now received more than £4.6million from fines issued in camera-enforced roads in LTNs since the schemes were introduced.

A council spokesperson said: “Quieter neighbourhoods [LTNs] are about making



Traffic in Alderman's Hill, Palmers Green, has increased by more than was originally stated by the council collected in 2021. This highlighted an 8% rise following implementation, which the council concluded did not alter the original decision to make the project permanent.

“Our contractor explained that software issues happened in 2019 – before the council started the project and further data was

our streets cleaner and quieter for our residents and encouraging people to find alternative ways to travel around the borough. Given this, a range of factors were considered when making the Fox Lane Quieter Neighbourhood permanent.

“The council, along with other local authorities across the UK, continues to use traffic count data, alongside other monitoring techniques, in order to build an overall picture of the impacts of particular projects.”

# Council refuses to back down over cashless parking

Parking meters now being ripped out across Enfield despite demand from Michael Gove to keep cash options for drivers

BY JAMES CRACKNELL

Enfield Council has refused to back down in response to a letter from Michael Gove calling on the local authority to continue allowing cash payments for parking.

The council is pressing ahead with the removal of its parking meters, despite a backlash from drivers who say they will struggle to pay if they don't have a smartphone.

Fears have arisen that the move will lead to “digital exclusion” for elderly drivers who struggle with new technology. As Enfield and other councils have made moves to axe cash payments, Secretary of State Michael Gove last month wrote to all local authorities asking them to continue providing a means to pay for parking using cash.

However, it remains unclear what powers could be used by Gove – who runs the Depart-



ment for Levelling Up, Housing and Communities – to stop parking meters being ripped out.

In his letter to Enfield and other councils, Gove wrote: “All local authorities have existing statutory duties to ensure that they do not discriminate in their decision-making

against older people or those with vulnerabilities. Cash remains legal tender and it will continue to be used in our daily lives by people who favour its accessibility and ease.

“I am therefore concerned that local authorities should ensure that there are alternative provisions for parking payments available so that no part of society is digitally excluded. This is of course important for many areas in preserving the accessibility of our high streets and town centres for all the public.”

An Enfield Council spokesperson stood by the original statement given to the *Dispatch* in February to justify the removal of parking meters in the borough, when they said the local authority wanted to “reduce the amount of street furniture on the borough’s pavements” and that cashless parking methods were “now being used more”.

The council spokesperson reiterated that drivers still had the option to buy parking scratchcards in advance or pay in shops displaying the PayPoint sign – however, concerns have also now been raised that too few shops in the borough are signed up to the PayPoint scheme.

Alessandro Georgiou, leader of the opposition Conservative group at Enfield Civic Centre, told the *Dispatch* that at least two

PayPoint shops were needed in every town centre for cashless parking to work effectively and that this was not currently the case. Cockfosters only has one PayPoint shop, located half-a-mile from the start of its main shopping area, while Oakwood has none whatsoever. The Green in Winchmore Hill also only has one PayPoint shop, as does the shopping area around Arnos Grove Station, where Transport for London recently removed its own parking facilities ahead of a residential development on the station’s car parks.

**“Cash remains legal tender and it will continue to be used in our daily lives by people who favour its accessibility and ease”**

On the council’s decision to scrap all its parking meters, Cllr Georgiou said: “Quite frankly this is a disgraceful decision which will increase the digital divide between residents that have smartphones and are able to use them and those that don’t.”

For more information on PayPoint locations: Visit [consumer.paypoint.com](http://consumer.paypoint.com)

# SMALL JOURNEY BIG IMPACT



## Recycling is closer than you think!



- |        |                  |           |                    |                   |             |               |
|--------|------------------|-----------|--------------------|-------------------|-------------|---------------|
|        |                  |           |                    |                   |             |               |
| cables | small appliances | batteries | printer cartridges | mixed light bulbs | electricals | mobile phones |



# Inspired by David Bowie

**Freya van Lessen from Edmonton social enterprise Bloqs on a new art exhibition launching there this month**

**W**e have teamed up with a renowned local artist to host an exhibition of her stunning works.

Launching on Thursday, 4th May, *An Occasional Dream* by Sara Captain will run for six weeks at our base in Edmonton.

Sara grew up in northern Italy and has painted since she could hold a brush. In her early 20s, she was discovered by a publishing agency and so began her career and lifelong love affair with art.

Sara relocated to the UK in 1998 and now works from her North London studio. Her international upbringing and multicultural mentality has seen Sara work across many countries, gaining a global following for her art.

Sara's philosophy is to paint from the soul. Drawing little distinction between art-forms, be it portraits or abstract, the respect she feels for her subject is clear in every brush stroke. Each piece reaches beyond the subject in search of a universal meaning and a shared humanity.

Expanding on her inspiration, Sara says: "Art has the unique power to condense our shared human experience and effect positive change. It shows the world as it

could be, making us feel, think and, occasionally, dream.

"In my work there's a search for something universal – beauty and truth. Even in the image of someone famous, we can see one of us: a human being.

"In abstract works, a thought, impression or feeling we can resonate with and instinctively recognise. In this way, I hope, the viewer will feel elevated and soothed by the warmth of a sense of belonging."

Named after David Bowie's 1969 release of the same name, *An Occasional Dream* is a fitting tribute to the iconic music figure who became a muse to Sara, inspiring many of her works.

The exhibition at Bloqs will showcase a spectrum of Sara's works across both portrait and abstract, with an exhibition launch party taking place at the Bloqs kitchen from 6pm until 10.30pm on Thursday, 4th May – 10% of profits from sales on the night will be donated to the Ukraine Relief Appeal.

**Bloqs is based in Anthony Way, Edmonton N18 3QT.**  
For more information:  
Visit [buildingbloqs.com](http://buildingbloqs.com)

**For more information about Sara Captain:**  
Visit [thecaptainsart.co.uk](http://thecaptainsart.co.uk)



Sara Captain in her studio



Berlin Sunset



Waiting for Jimmy

## Make New Friends & Learn New Skills



**THIS IS THE**  
**ART**  
**CLASS**  
**YOU'VE ALWAYS WANTED**

- FUN, EASY, STEP BY STEP
- Develop impressive new skills in a friendly atmosphere
- 3 hour sessions, morning or afternoon, for 3 1/2 months
- Learn how to make Art you can give as gifts or sell at craft fairs
- Get arty and make the Class your favourite day of the week!

**ABSOLUTE BEGINNERS TO IMPROVERS WILL LOVE THIS COURSE!**



"It's brilliant, now I can draw my grandchildren!!!"  
Sue, Shrewsbury

"Don't miss out. You will love this course!"  
Gary, Newbury

**STRICTLY LIMITED PLACES**  
CALL NOW TO BOOK OUR AUTUMN TERM

**020 4542 7606**  
SCHINDLER HALL, 75 CHASE ROAD  
ROAD, LONDON N14 4QY

Pan seared stuffed chicken breast



## The Fox makes a welcome return

### Neil Littman enjoys a meal at the newly-reopened Palmers Green pub

The bad news is that more than 32 pubs disappeared from communities in England and Wales every month last year as rocketing energy bills and staffing pressures forced businesses to shut for the final time.

The good news is that one long-closed pub in Enfield has bucked the trend and reopened. The Fox in Palmers Green had closed its doors in 2018 ahead of a redevelopment of the surrounding property and the pub itself was in need of a long-overdue facelift. It has certainly had one, resulting in a revitalised and long-needed venue.

Run by the Whelan's traditional Irish pub chain, The Fox is a large landmark on the corner of Green Lanes and Fox Lane. The pub originally dated to 1704 but the current structure was built in 1904 with its distinctive turret and exterior plaster relief decorations. It became the borough's first 'asset of community value' in 2015 and also has a claim to fame after appearing in the film *Harry Potter and the Prisoner of Azkaban* in 2004.

The latest incarnation of The Fox boasts a unique interior designed and finished with an eclectic mix of décor and furnishings, plus a function room

available for hire. Live music and sport are part of the offer.

There is more than a hint of a traditional Irish welcome in the ambience and the food. I arrived with a friend in tow who I regularly visit local pubs with. On a Thursday evening we found The Fox was very busy and initially had difficulty finding somewhere to sit, until we spotted the function room which was in a quieter corner of the pub.

I discouraged my friend from ordering wine so we could try the beer instead. Drink prices reflect the current upward trend, ranging from £4.80 for a pint of London Pride to £6.80 for a pint of Beavertown Neck Oil. They also offer a Norfolk Ale, Guinness and Woodford's Wherry on the pumps.

The menu shows an Irish influence. Mains cover crowd-pleasers such as bacon and cabbage; ham, egg and chips; plus staples such as fish and chips. There are plenty of vegetarian options too. My companion initially ordered a healthy option, a Buddha bowl, but they had run out, so went instead for sea bass fillet with new potatoes and veg (£15.95). I went for pan-seared stuffed chicken breast with mash, spinach, seasonal vegetables and a mustard cream sauce (£12.95) – it was so moreish I probably could have eaten a bowl of the sauce on its own!

There are also small plates on offer including nachos, lamb koftas, halloumi bites and other

vegetarian and vegan options. You can even order a kilo of chicken wings!

We left after three hours, three pints and a great meal, with every intention of a return visit. The Fox has made a very welcome addition to the area and importantly its reopening has also boosted the local economy – creating 20 jobs.

**The Fox is at 413 Green Lanes, Palmers Green N13 4JD and is open Monday-Thursday, 11.30am-11pm; Friday-Saturday, 11.30am-1am; and Sunday 12pm-10.30pm:**  
Visit [whelanspubs.co.uk/whelans-premium/the-fox](http://whelanspubs.co.uk/whelans-premium/the-fox)

Advertisement

### LICENSING ACT 2003 Notice of Application for a New Premises Licence/ Club Premises Certificate

Notice is hereby given that **Your London Florist Ltd** has applied to the Licensing Authority of London Borough of Enfield for a Premises Licence/Club Premises Licence to permit:

- The sale of alcohol not for drinking on the premises: Monday to Friday, 9am-5pm; Sunday, 10am-4pm
- For the premises **Your London Florist situated at Cattlegate Road EN2 9DX**

The public register where applications are available to be viewed by members of the public can be accessed online by visiting <https://new.enfield.gov.uk/services/business-and-licensing/> and following the link to the Licensing Register. Email [licensing@enfield.gov.uk](mailto:licensing@enfield.gov.uk) to request a copy of the application within 28 days from the date of this notice.

Any person wishing to submit relevant representations concerning this application must give notice by emailing [licensing@enfield.gov.uk](mailto:licensing@enfield.gov.uk), giving in detail the grounds of the representation no later than: **23/05/23**

Representations received by post will not be accepted. Representations must include your full name and address. Representations must relate to one or more of the four Licensing Objectives: the prevention of crime and disorder, public safety, the prevention of public nuisance and the protection of children from harm. It is an offence, under section 158 of the Licensing Act 2003, to knowingly or recklessly make a false statement in connection with an application for a premises licence. A person guilty of an offence is liable on summary conviction to a fine not exceeding level five on the standard scale.

Dated: 25/04/23

## Submit your listing

We can include low-cost community events taking place in Enfield. For next month's listings, email the details of your event to [enfielddispatch@socialspider.com](mailto:enfielddispatch@socialspider.com) by **Monday 15th May**.

### EXHIBIT

#### All Hail The King!

Friday 5th May until Sunday 14th May  
Dugdale Arts Centre, 39 London Road, Enfield EN2 6DS

In celebration of the Coronation, artefacts from the Museum of Enfield and material from Enfield Local Studies and Archive will be displayed at Dugdale Arts Centre in this special Coronation exhibition. Come and marvel at commemorative mugs and programmes dating back from the coronations of George V, Edward VII, and Elizabeth II!

Free entry

Visit [dugdaleartscentre.co.uk](http://dugdaleartscentre.co.uk)

### FUN DAY

#### Platinum fun day

Saturday 6th May, 12pm  
Millfield Theatre, Silver Street, Edmonton N18 1PJ

Platinum Performing Arts is celebrating the Coronation with a packed family fun day! Free face painting, inflatables, performances, meet your favourite princesses and super heroes and party with our resident DJ in true Platinum style. All proceeds go to Macmillan Cancer Support.

Tickets £1 adults, 50p children

Visit [millfieldtheatre.co.uk](http://millfieldtheatre.co.uk)

### PARTY

#### Coronation celebration

Saturday 6th May, 2.30pm-6pm  
Azalea Court Nursing Home, 58 Abbey Road, Enfield EN1 2QN

Please join us in celebrating the coronation of His Majesty the King and Her Majesty the Queen Consort. We will have live entertainment, food and drink and a balloonist.

Free entry

Email [activities@azaleacourt.co.uk](mailto:activities@azaleacourt.co.uk)

### BRUNCH

#### Free Sunday brunch

Sunday 7th May, 10am-12pm  
CRM Agape House, Raynham Primary School, Raynham Terrace, Edmonton N18 2JQ

A free Sunday brunch, open to everyone with no restrictions. We provide a hot meal, drinks and sandwiches.

Free entry

Visit [cramagapehouse.org.uk](http://cramagapehouse.org.uk)

### COMEDY

#### Stephen K Amos at Friday Night Funnies

290 Chase Side N14 4PE  
Friday 12th May, 8pm

Friday Night Funnies 'go large' at Chickenshed's Rayne Theatre – for one night only! Resistance Comedy present the best and brightest comedy performers around, plus the incredible headlining act Stephen K Amos!

£15 tickets, advance booking recommended

Call 020 8292 9222

Email [bookings@chickenshed.org.uk](mailto:bookings@chickenshed.org.uk)

Visit [chickenshed.org.uk](http://chickenshed.org.uk)

### OPEN DAY

#### Open garden

Saturday 13th May, 2pm-5pm  
Friends Meeting House, Winchmore Hill, 59 Church Hill N21 1LE

Discover the historic and beautiful garden and burial ground.

Free entry

Visit [winchmorehillquakers.org.uk](http://winchmorehillquakers.org.uk)

### MARKET

#### Forty Hall Farmers Market

Sunday 14th May, 10am-3pm  
Forty Hall Farm, Forty Hill, Enfield EN2 9HA

Our hugely successful farmers market brings together a range of local food producers and street food stalls, with a focus on local, organic produce.

Free entry

Visit [fortyhallfarm.org.uk](http://fortyhallfarm.org.uk)

### FILM

#### Community film show

Tuesday 15th May, 2.15pm-4pm  
Jubilee Hall, 2 Parsonage Lane, Enfield EN2 0AJ

Older people (and friends of any age) are invited to Enfield Over 50s Forum's second community film showing. We have two main films – 'Cakes' and 'The Romance Scam' – which we hope you will find light-hearted and amusing. Snacks and hot drinks are available free of charge.

£3 entry for members, £4 non members

Email [eternalechoes2002@yahoo.ie](mailto:eternalechoes2002@yahoo.ie)

## AROUND THE BOROUGH

## ENFIELD TOWN

**Bank given listed status for 'world first'**

BARCLAYS BANK IN ENFIELD Town has been given a Grade 2 heritage listing – thanks to its claim to a world first.

The bank launched the world's first automated teller machine (ATM) on 27th June 1967 and boasts a blue plaque celebrating its place in history as a result. Comedian Reg Varney, an Enfield resident at the time, was the first person to use it.

This week it was announced by Historic England that the Barclays Bank building in The Town has now been listed and added to the National Heritage List, protecting it from future development.

Sarah Gibson, listing team leader at Historic England, said: "Cash machines are now such a normal part of our daily lives, but it was in this elegant bank building in a North London suburb that this new, groundbreaking technology was tested and went on to change the world.

"It's extraordinary to think how much has changed since 1967 when it comes to everyday banking. While



Barclays Bank, Enfield Town  
Credit Historic England

our use of cash has fallen in recent years, as contactless technology dominates, it still remains a lifeline to many, and I'm glad to see this building recognised for its contribution to that story of evolution."

The bank building's entry on the National Heritage List for England recognises both its historic and architectural significance. The purpose-built bank, originally a branch of the London and Provincial, is a strong work of late 19th Century commercial architecture. Built in 1897, it stands on a prominent corner of Enfield Charter Market and its

exterior remains largely unaltered.

The bank was designed by William Gilbee Scott in a style described by architectural historian Nikolaus Pevsner as "exuberant Flemish renaissance". Made of red brick with stone dressings and prominent gables, it is topped by a decorative cupola and small spire.

Although the original cash machine at the bank has long since been replaced, a blue plaque was unveiled in 2017 at the spot where it was installed, to mark the 50th anniversary. Barclays also turned one of its current cash machines gold.

## EDMONTON GREEN

**Cash boost for historic school's restoration**

A PROJECT TO RESTORE A 230-year-old former school building in Edmonton Green and turn it into a community hub has taken a big step forward after being awarded nearly £325,000.

Grade 2-listed Edmonton Charity School in Church Street – first opened as a girls' school in 1793 – has lain derelict for a decade, but plans are now being drawn up to reopen the building for the community.

The 'Life in the Community' project comprises a number of groups interested in restoring the building, along with its adjacent school mistress' cottage, and has now secured a first-round National Lottery Heritage Fund grant of £289,838, plus a further £33,650 from the Architectural Heritage Fund. If a second-round lottery bid is successful, the project will be fully funded with £1.8m.

Led by London Historic Buildings Trust (LHBT) and Enfield-based Learning for Life Charity (LFLC), the project



Edmonton  
Charity School in  
Church Street

aims to bring the school buildings "back to their former glory" and enable them to become an education space once more. Proposals include providing learning and training opportunities for young people in Enfield who are disadvantaged.

The project will also benefit the wider community through the creation of a local hub. Over the next 15 months, further design work and surveys will take place before a planning application is submitted. If permission is granted, it's hoped

to complete the work by 2026.

Georgina Nayler, chair of LHBT, said: "We are very pleased that this important project is making good progress, and this is down to a truly collaborative effort involving our great partners and the really important involvement of the community."

Renee Flourentzou from LFLC said: "LFLC is very excited to collaborate with the London Historic Buildings Trust to restore this special building in Edmonton and create an innovative community space, that provides much needed training and employment opportunities for young people in Enfield."

Edmonton Charity School is currently on Historic England's at-risk register. Its restoration has been in the works for several years, with LHBT and LFLC receiving support from Enfield Council and The Enfield Society to help take their proposal forward. A public consultation has also been held to discuss what features the restored building might include.

## BRIMSDOWN

**Former factory worker appeal**

A FORMER FACTORY WORKER who believes his job at a metal factory exposed him to lethal asbestos is appealing to former work colleagues for help with a legal claim.

Calogero Ingrao, also known as Charlie, recently received a diagnosis of the asbestos-related cancer mesothelioma and would like to hear from those who worked at the Johnson Matthey factory in Jeffreys Road, Brimsdown, at a similar time to him.

Calogero, now aged 78, worked at the metal factory between 1966 and 1992. It processed metal and melted-down materials to produce blocks of metal and Calogero joined the company when he was aged 25, at first working in the nickel department before moving to the evaluation department where he spent the majority of his time.

He mixed and ground up raw mate-



Calogero Ingrao

rials from the mines which then went into a furnace to be melted and made into blocks. The work was dusty and Calogero recalls the factory roof was made from asbestos corrugated sheets.

The pensioner was diagnosed with mesothelioma in October 2022 and is now receiving treatment.

Anyone with information is asked to email Jessica Pittman at Leigh Day on [jpittman@leighday.co.uk](mailto:jpittman@leighday.co.uk) or call 020 3780 0465.

## MERIDIAN WATER

**Construction skills academy**

BY PHILBERT OSEI-WUSU

A CONSTRUCTION SKILLS academy has opened at Meridian Water with more than 500 students now set to be trained there each year.

Enfield Construction Skills Academy has been delivered by Enfield Council with Countryside Partnerships and Capital City College Group (CCCG) and has started to accept students and also provide opportunities for local people hoping to gain the skills and qualifications needed for a career in construction.

Courses will be led by the College of Haringey, Enfield and North East London (Conel), which is part of CCCG, and there will be a focus on teaching sustainable construction methods and how to improve energy efficiency in buildings. Apprenticeships will also be available in different areas such as carpentry, plumbing, brickwork and thermal installation.

The new academy building features a reception area, canteen, offices, visitor centre, classrooms, workshops and an external outside area.

## PALMERS GREEN

**Work to refill boating pond**

BROOMFIELD PARK'S BOATING pond is set to be repaired after years of sitting empty because of a broken pump.

The pond has sat dry since 2020 when blocked pipes prevented it being refilled from a nearby borehole, while the pump was later also found to be faulty. Last year Enfield Council warned that

restoring and refilling the pond would require "significant investment" but has now confirmed it will be funded "through grants and council funds".

Kim Lumley, co-chair of the Friends of Broomfield Park, said: "We hope and expect to see the pond filled with fresh water from the natural aquifer this summer."



Credit Michael Weir via Unsplash

# Looking ahead to a new season at Enfield Cricket Club

James Quinlan previews another summer of cricket in Lincoln Road

Spring only means one thing for some people – the start of the cricket season.

While this year it meant long-sleeved jumpers, rain delays and green wickets, there was a real sense of anticipation built ahead of the first ball being bowled.

Enfield Cricket Club is based in a fantastic ground on the corner of Lincoln Road and Wellington Road and has been around for nearly 170 years. The club was a founding member of the Middlesex County Cricket League and has won a number of trophies, including multiple league titles, the National Cup in 1988 and, most recently, the Middlesex Cup in 2016.

For the 2023 season we are once again aiming to reach as high as possible. The first eleven, captained by Tony Sayers, unfortunately suffered relegation to the second division last season but the players are ready to bounce back. It has been a positive win-

ter, with some new faces joining the fold and a welcome return of talented Australian overseas player Connor Brown.

Our second eleven has new leadership, with James Ryan and Callum Wick – both of whom came through our junior section – aiming to build on positive results at the end of last season. Again, some new faces

***“We place great emphasis on a strong social and family-friendly focus with inclusivity at its heart”***

have joined the squad this winter, creating greater competition for places – something that can only benefit the club. The third eleven continues to be skippered by Zeeshan Munir, who has worked hard to develop the side and give opportunities to youngsters to experience competitive senior cricket – a hugely important aspect third eleven

cricket. Last season, the side added a number of players who will return this year. Zeeshan and vice-captain Adnan Zameer are aiming to improve consistency and, if that is achieved, the side can push for promotion.

The club also has a growing junior colts section, supporting and developing both boys and girls aged five to 18 years. These

youngsters are coached by a team of dedicated and highly-qualified coaches and play competitive matches on weekday evenings.

Enfield CC aspires to achieve success across the board, but we also place great emphasis on a strong social and family-friendly focus with inclusivity at its heart – everyone should have an opportunity to enjoy cricket as a player, official, spectator or proud parent!

**If you are interested in joining Enfield CC in any capacity:**  
Email [enfieldcc@yahoo.co.uk](mailto:enfieldcc@yahoo.co.uk)

## Towners miss out on play-offs after disappointing end to season

BY ANDREW WARSHAW

For so long it promised so much, only to end in abject disappointment.

Enfield Town’s season came to a hugely disheartening end last month as they failed to reach the Isthmian Premier League play-offs after being in pole position for all but a few weeks of the campaign.

A year after the anguish of being beaten in the play-off semifinals, Town’s goal of at least getting that far again was blown away in the final stages of the season when they took only three points from a possible 18 to end up in ninth position.

An understandably downcast Andy Leese, who has managed Town for six years, said: “You can’t sugar-coat it, we haven’t been good enough from perhaps the early part of February.

“It’s sad because in the end it’s a difference of a few points. There’s a whole myriad of reasons why we’ve messed it up and it’s tough to take.”

As a supporter-owned club, Enfield don’t have the resources of some of the other clubs in the division – many of whom didn’t make the play-offs either. But apart from a few days in December, Town had been in the top five since the end of September, only to be pushed out of the play-off positions in early April.

“It’s a collective thing and I’m not just looking at the players,” Leese said of the sudden capitulation. “It has to start with me and the management team. I still maintain we have a squad that should be in the top five. I can only apologise to the supporters, because we put ourselves in a great position.

“Maybe last season we over-achieved a bit, I’m not sure, but we came off the standards that I set and it’s bitterly disappointing.”

No-one can fault the management and players for their commitment and enthusiasm but how many of the current squad will be around next season remains to be seen.

Every summer sees a turnover of players at most clubs, whatever their status, and there will be a considerable amount of stock-taking and planning in the weeks ahead.

Chairman Paul Reed said: “We have a lot to be proud of as a football club, we will do all we can this summer to make sure that we are well-placed to have the best possible campaign this season.”

On a positive note, the final game of the season was followed by the club’s annual awards ceremony. Goal-keeper Nathan McDonald picked up two prizes – supporters’ player of the

year and players’ player for a series of outstanding saves. Adam Cunnington won the management’s player of the season while Marcus Wyllie took the young player award. Striker Jake Cass took the golden boot award for his 18 league goals while Ian Hamilton won the club person of the year award, having been an invaluable volunteer in a variety of different roles.

Shortly before going to press, Enfield Town FC announced they and manager Andy Leese had “agreed to part company with immediate effect”.

Paul Reed said: “I would like to thank Andy and his staff for all of their efforts during his time at the club. He’s given us many highs and fantastic performances, putting together a team that our supporters could be proud of.

“Andy has always proven himself to be a honourable, hard-working and talented manager who has constantly had the best interests of the club at heart. On a personal level we have enjoyed an excellent working relationship and I truly appreciate his enormous contribution to our club over the past six seasons.”

Advertisement

**Local plumber**  
**No call out charge,**  
**free estimates!**

· Taps · Burst Pipes · Washing  
Machines · Blockages · Toilets  
· Bathroom suits · Guttering  
· All plumbing work

**Contact number:**  
**07407 310802**

**LICENSING ACT 2003**  
**Notice of Application for**  
**a New Premises Licence**

Notice is hereby given that **Chicken & Pizza Express Ltd** has applied to the Licensing Authority of London Borough of Enfield for a Premises Licence to permit:

- Provision of late night refreshment until 3:00am
- For the premises: Ground Floor Shop, 365 Fore Street, London N9 0NR

The public register where applications are available to be viewed by members of the public can be accessed online by visiting <https://new.enfield.gov.uk/services/business-and-licensing/> and following the link to the Licensing Register. Email [licensing@enfield.gov.uk](mailto:licensing@enfield.gov.uk) to request a copy of the application within 28 days from the date of this notice.

Any person wishing to submit relevant representations concerning this application must give notice by emailing [licensing@enfield.gov.uk](mailto:licensing@enfield.gov.uk), giving in detail the grounds of the representation no later than: **16/05/23**

Representations received by post will not be accepted. Representations must include your full name and address. Representations must relate to one or more of the four Licensing Objectives: the prevention of crime and disorder, public safety, the prevention of public nuisance and the protection of children from harm. It is an offence, under section 158 of the Licensing Act 2003, to knowingly or recklessly make a false statement in connection with an application for a premises licence. A person guilty of an offence is liable on summary conviction to a fine not exceeding level five on the standard scale.

**Dated:** 19th day of April 2023

# WE NEED YOUR HELP



## WE ARE LOOKING FOR PEOPLE IN ENFIELD WHO CAN HELP SUPPORT US TO PRODUCE MORE HIGH-QUALITY LOCAL JOURNALISM IN ENFIELD DISPATCH

- We have NO shareholders
- We have NO wealthy backers
- We are run by a small but dedicated team as part of a not-for-profit community interest company
- We hold authority to account, expose scandals, highlight inequality, promote good causes, and provide a platform for local people
- Every penny of income from Enfield Dispatch helps us deliver more journalism in Enfield
- The paper costs nearly £6,000 per month to produce and distribute, but monthly income is under £5,000 currently
- We currently have 189 supporters who contribute around 16% of our income, but we need more!

Can you help us? Our membership scheme has many different options depending on your ability to contribute. Rewards include having a copy of the paper posted to you every month. Local businesses and charities can also sign up and access discounts on advertising.

**Find out more at: [enfielddispatch.co.uk/join](https://enfielddispatch.co.uk/join)**

## OUR CURRENT MEMBERS

Derek Grant, Young Notes, Ed Balleny, Suzanne Beard, Elizabeth Crosthwait, Chris Kaufman, Susan Cook, Basil Clarke, John Naughton, Right at Home Enfield, MumSing Choir, Lloyd Tew-Cragg, Andrew Warshaw, Neil Churchill, Dan Wright, Anthony Fisher, William Yates, Carole Stanley, Mervyn Maggs, Aditya Chakraborty, Norman Bennett, Vivien Giladi, Greg Andrews, The Old Enfield Charitable Trust, Laura Davenport, Mick Wood, Francis Sealey, Caroline Banks, Joe Hickey, Petr Mitterbach Tracy Hughes, Kristiana Heapy, Neil Bachelor, John Crowther, Hannah Salvidge, Sean Wilkinson, Julia Daniel, Philip Ridley, Robert Pite, Deborah Dalgleish, Steve King, Dána Roberts, Lauri Clarke, Julian Rhys-Williams, Anne Cullen, Ross Cunningham, Diana Goforth, Kirsten Lowe, Aurora Yaacov, Sylvia Collicott, Paula Lamont, Liz Wright, Elsie Rigden, Adam White, Sue Grayson Ford, Sangeeta Waldron, Joe Studman, Zoe White, Harriet Ray, Hannah Dyson, Julie Nedza, Peter Krakowiak, Lynda Dyson, Chris Skilbeck, Peter Campling, Alison Shepherd, Chris Graham, Per Hansen, Hari Ramanathan, Lindsay Rawlings, Carlo Rimini, Dennis Donoghue, Bhasmank Mehta, Harry Redmond, Anita Jena-Smol, Jim Shepherd, Graham Halle, Keith Comley, Thomas Whiteway, Anthony Maddox, Neil Littman, Janet Carrick, Tricia Sharpe, Robert Dawes, Paul O'Brien, Richard Mapleston, Malcolm Stow, Graham Cleur, Evan Hughes, Isobel Whittaker, Andrew Murray, Andy Bean, Debbie McVitty, Richard Whitaker, Mark Shaw, Peter Moutell, Jane Maggs, John Cole, Vanessa Wiseman and Pat Kane, Caroline Bernard Moxey, Ioannis Chronakis, Caley Montgomery, Janice Nunn, Amy Williams, Su Fairbairn, Linda Bartell, Fran Holmes, Elizabeth Hart, Helen Menzies, Boyd Goldie, Ann Jones, Yasemin Brett, Christopher Dey, Pauline Burdon, Helen Karamallakis, Tanya Ruth Sampson, Kim Pickering, Sharron Spice, Bush Hill Park Residents Association, Maria McCaul, Ruby Sampson, Colourword Translations, Cristina Agudo, Garry Kousoulou, Pamela Rayner, Susan Davies, Frances Warboys, Pamela Stansall, Michael Dickinson, Richard Stones, Natasha Boydell, Martyn Stogden, Rupert Price, Andrew Irvine, Meryn Cutler, Karl Brown, Kay Heather, Julia Mountain, Jerome O'Callaghan, Matt Burn, Martin Russo, Marilyn Hamilton, Helen Osman, Bill Linton, Enfield Over 50s Forum, Mr. A Cleary, Stephen Evans, Ryan Hebbs, Bush Hill Park Residents Association, David Mickleburgh, John Machin, Carol Fisk, Sheila Spooner, Ben Sulaiman, Pat Kane, Sarah Jackson, Liz Gilbert, Edward Smith, Jenny Noon, Josepha Scotney, Alison Parker, Vicki Pite, Barrie Lane, John Woodger, Rob Hastings, Malcolm Sleath, Jeni Barker, Sarah Heyward, Nick Mayer, Martyn Axon, Margaret McHugh, Keith Morvan, Alice Kay, Liz Partridge, Graham Kilwin, Phil Gooch, Patrick Robinson, Friends of Hilly Fields, The Enfield Society

