

ENFIELD DISPATCH

Nº 61 THE BOROUGH'S FREE COMMUNITY NEWSPAPER

OCT 2023

NEWS

Cafes in four Enfield parks forced to close after 'contract breach'

P. 6

NEWS

Three Enfield schools confirmed as having unsafe concrete

P. 8

COMMENT

Feryal Clark MP on why government is 'letting us down'

P. 10

ARTS & CULTURE

Enfield Grammar alumni win Mercury Music Prize

P. 12

NEWS

Camra slams council over loss of pubs in Ponders End

P. 14



CYCLISTS WILL SOON be able to ride along a one-and-a-half mile section of the New River in Enfield after a council proposal to create a shared footpath and cycle lane won planning approval last month. The upgrade to the New River Path north of Tenniswood Road, including the opening of an additional part previously closed to the public, is not without controversy, as residents living along the route fear it will be used by mopeds and e-scooters. Read more at enfielddispatch.co.uk

Council faces big cuts to balance budget

BY JAMES CRACKNELL
& SIMON ALLIN, LOCAL
DEMOCRACY REPORTER

Growing financial pressures at Enfield Civic Centre are forcing the council to consider cuts to support for the borough's most vulnerable people – breaking a Labour manifesto promise in the process.

Enfield Council is scrambling to make savings amid the rising cost of repaying its £1.1 billion debt mountain and a ballooning budget for temporary accommodation, as homelessness rates soar.

The biggest cut announced so far is a proposed reduction of Enfield's council tax support scheme, from £38 million to £26m, which would force tens of thousands of the borough's poorest households to pay higher bills from next year.

If agreed, the cut would break an election pledge made by the Labour administration in 2022, when it vowed to "maintain our generous £38m council tax support scheme".

A report last month revealed the move would have "significant negative impact across all working-age claimants" as residents already on low incomes are forced to pay an average of £8.84 more per week. The minimum payment made by working-age claimants would rise from 24.5% to 50% of their bills, while support would only be provided up to band C property values.

The report says disabled and carer households would "definitely be negatively impacted" as they would no longer receive 100% council tax support. Ethnic minority households are expected to be "disproportionately negatively impacted" by the changes, as they're more likely to be claiming council tax support, while female claimants also outnumber male claimants by around two to one.

More than 10,000 households would see their weekly bills rise by up to £5. But some would face much steeper costs, with more than 1,000 paying between £20 and £25 extra per week and 127 facing hikes of £40 to £65 per week. After

factoring in the costs of the proposed shake-up, the net saving to the council is estimated to be £7.3m.

At a meeting last month, the Labour administration blamed the council's financial woes on the Conservative government's management of the economy, claiming it had fuelled the inflation that accounts for £20m of the £39m budget gap forecast for the 2024/25 financial year – and pointing out the government had cut its funding for council tax support since handing responsibility to local authorities.

Council leader Nesil Calsikan said the cost of the scheme was "not sustainable or affordable for any local authority" and the council had "no choice but to look at our options". But she added it would remain "one of the most generous council tax support schemes" which "is a reflection of our commitment to support the poorest in our borough".

James Hockney, the Conservative group's finance spokesperson, said: "These devastating Labour cuts will impact over 30,000 low-income households in the borough

– including over 12,000 lone-parent households with one or more children. Enfield Labour's reckless financial strategy of the council, being the tenth most indebted authority in the country, is having huge consequences."

Another budget saving revealed in September would see Millfield Arts Centre in Edmonton handed to an external provider. Both Millfield House and Millfield Theatre are losing the council nearly £600,000 annually. Under the terms of a future lease, a new provider would run them for cultural and community use only, including keeping the library.

Edward Smith, the Conservative group's arts and culture spokesperson, welcomed the move to put Millfield on a "firm financial footing" but warned: "If the financial situation deteriorates and other things are considered we will look at it closely."

Meanwhile, to help slash spending on temporary housing, the council is considering installing modular homes on stilts above borough car parks – read more on Page 2.



enfielddispatch.co.uk



enfielddispatch@socialspider.com



[@EnfieldDispatch](https://twitter.com/EnfieldDispatch)



[@EnfieldDispatch](https://www.instagram.com/EnfieldDispatch)



[/EnfieldDispatch](https://www.facebook.com/EnfieldDispatch)

ED.

N° 61
OCT 2023

Enfield Dispatch is the borough's free community newspaper. We publish monthly and distribute 15,000 free copies of each issue

Publisher
David Floyd

Editor
James Cracknell

Designer
Jonathan Duncan
Head of Advertising
Klaudia Kiss

Local Democracy Reporter
Simon Allin

Contributors
Amanda Wayne, Alison Moore, Feryal Clark MP, Jeni Barker, Andy Kilmartin, Neil Littman, Andrew Warshaw

CONTACT

Call 020 8367 2975

Email EnfieldDispatch@socialspider.com

Post Nicholas House, River Front, Enfield EN1 3TF

ADVERTISING

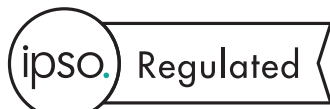
Call 07732 000 430

Email klaudia@socialspider.com

For licensing enquiries:
Email licences@socialspider.com

Enfield Dispatch is published by Social Spider Community News:

Visit socialspidercommunitynews.co.uk



Enfield Dispatch is regulated by the Independent Press Standards Organisation (IPSO). For more information on the Dispatch's complaints policy and how to make a complaint visit: enfielddispatch.co.uk/complaints

Modular homes on car parks could become temporary housing solution

Raft of measures discussed as council desperately tries to plug budget black hole amid spike in use of hotels as temporary accommodation

BY SIMON ALLIN, LOCAL DEMOCRACY REPORTER

Modular homes on car parks could become a solution to Enfield's homelessness crisis as the council looks to slash spending on hotel rooms for use as temporary accommodation. The civic centre is set to spend £330,000 on studies to test the feasibility of modular housing, which is manufactured quickly off-site and can be assembled on vacant land, car parks and rooftops.

It is one of a raft of initiatives designed to cut spending on bed and breakfast (B&B) accommodation, including hotels, which the council acknowledges are "inappropriate" for families.

Enfield Council has increasingly used the private rented sector to house homeless families in recent years because of a shortage of social housing in the borough, but soaring interest rates over the past twelve months have plunged the sector into crisis, as landlords decide to hike rents or sell up in response.

Section 21 'no fault' eviction rates in Enfield recently became the highest in London.

As a result, hundreds of local families are now being housed in hotels and other types of B&B accommodation, often for months on end. This comes at a significant cost to the council, and it is currently forecasting an "unsustainable" £17.8million overspend on this year's temporary accommodation budget.

According to reports presented to a meeting of the council's cabinet last month, housing a family in a hotel typically costs £45,424 per year – but housing them in a modular home owned by the local authority instead would only cost £4,307 per year.



Modular housing could be installed on some of the borough's car parks Credit Abastav via Wikimedia Commons

Modular homes are built off-site and can be delivered with internal fittings already provided. They are lightweight, easy to transport and require only shallow foundations.

The council says the homes can

be installed on car parks using steel frame stilts, meaning the car parks can still be used. It hopes to provide around 99 units by 2028 and 30 "rooftop

units" by 2027, at a cost of £24.4m.

Other initiatives proposed by the council include adding extra storeys to existing temporary accommodation blocks, which can sometimes be done without full planning permission following changes to permitted development rights in 2020.

Housing Gateway Limited, a council-owned company set up to acquire properties for use as affordable rented accommodation, is also looking to add around 350 new homes to its portfolio over the next five years.

The council will continue to use vacant homes on housing estates that are awaiting regeneration, such as Joyce Avenue and Snells Park in Edmonton, as an interim solution

to the surge in homelessness.

The latest council figures reveal 3,100 Enfield households are living in temporary accommodation, and that the proportion of those housed in B&Bs is continuing to rise.

George Savva, Enfield's cabinet member for social housing, accused the government of failing to tackle the housing crisis and said 400 homeless families were approaching the council every month "as the cost-of-living crisis hits and landlords leave the market".

He told last month's cabinet meeting that the council was "on the move all the time, trying to find new ways to help people have a roof over their heads".

In June, the council agreed a new policy of moving families stuck in hotels away from London and the south-east of England as a solution to the problem.

Commenting on the plans for modular homes, director of housing and regeneration Joanne Drew said the council was "still at the exploratory stage" but was "very clear that any housing provision has to meet essential space standards, thermal standards, and generally have amenities around it that supports family life".

Social homes approved

BY SIMON ALLIN, LOCAL DEMOCRACY REPORTER

A developer which describes itself as a "socially conscious development company" has finally won planning approval to build 210 social-rent homes on two sites in the east of the borough.

Social Capital Partners won permission to demolish The Gilpin's Bell pub in Fore Street, Angel Edmonton, and build 110 homes plus commercial space that could be used to provide a replacement public house. The proposals were presented to Enfield Council's planning committee for a fourth time last month after previous versions of the scheme were rejected, with councillors describing it as "ugly".

Another scheme, for 100 affordable homes in Enfield Highway, was also rejected by the committee last year over concerns it would be "overbearing". But after going back to the drawing board, Social Capital Partners was given the go-ahead to build the Moorfield Road scheme.

Councillors had been given extra incentive to approve the twin developments after planning reports detailed how the borough was facing soaring homelessness and an acute shortage of affordable rented accommodation, forcing hundreds of families to live in hotels.

Conservative committee member Mike Rye, who previously opposed the Fore Street scheme, welcomed the changes made by the developer on 5th September and said he suspected the benefit of the tower "does just about outweigh the reasons for refusal".

The Moorfield Road scheme was presented to the committee on 19th September, with an independent planning consultant stating previous reasons for refusal had been "positively addressed" by a taller but less "monolithic" proposal which "would not look out-of-place in long-distance views" considering the presence of 14-storey Hastings House nearby.

While the Fore Street scheme was unanimously approved, the Moorfield Road plans ran into opposition from Conservative councillors, with Lee Chamberlain saying he hadn't heard anything to convince him the proposed twelve-storey block was "not too much". But the votes against were not enough to block the Enfield Highway development, and a vote in favour allowed Social Capital Partners to start work on two 100% social-rent housing schemes for the borough.

Disused garages transformed into 'breathtaking' space for Edmonton entrepreneurs

James Cracknell attends the official opening of Angel Yard where 35 affordable units for local businesses have been created



Council cabinet member Chinelo Anyanwu cuts the ribbon on Angel Yard

A new hub for young entrepreneurs has been officially launched on a housing estate in Angel Edmonton – after being created from the shells of disused garages.

Angel Yard, sited between Joyce Avenue and Snells Park estates, comprises 35 adaptable workspaces designed for businesspeople aged 18-30 who can access training and support to help develop their ideas. Several of the units have been operating since June, with entrepreneurs including an illustrator, wig-maker and aquaponics educator now trading there.

The eye-catching design for Angel Yard, by Jan Katte Architects, incorporates lattice timber frames supporting a translucent canopy through two connected 'streets', while barrel-vaulted roofs adorn each of the former garages now being let as business units.

A launch event last month took place during a series of Open House Festival events around Angel Edmonton showcasing new street art, a poetry trail, and the recent refurbishment of Fore Street Library.

Chinelo Anyanwu, Enfield Council's cabinet member for public spaces, culture and local economy, cut the ribbon on Angel Yard after giving an emotional

speech about the project. Explaining she could "never imagine" something like this when she was a girl growing up in the area, Cllr Anyanwu said: "What is happening here is close to my heart, because it has been much needed.

"As Enfield Council we invest in places and people so they can thrive and they have more life choices. Although there will be a massive regeneration here, we cannot wait for that, it needs to happen now for everyone in the community, and I am so joyous to see people here and the units fully open.

"The design is absolutely breathtaking."

Angel Yard cost £1.4million to build and was funded through the Mayor of London's Good Growth Fund. Charity Launch It



Wig-maker Warren Campbell

is now managing the space and is supporting each of the entrepreneurs that take up residence, with 50% rental discounts offered for the first two years.

Launch It chief executive Pat Shelly said: "We want to create a legacy of young people who become inspirational for other young people who visit this site."

The *Dispatch* spoke to two of the entrepreneurs who have already moved into Angel Yard. Both had previously been running businesses from their homes in Edmonton.

Warren Campbell runs a wig-making company, Meili Hair, which he set up after returning from China where he established links with hair suppliers. The firm offers bespoke wigs and fitting, while there are also now chairs for hair stylists to rent at his unit in Angel Yard.

Warren, who lives on Snells Park Estate, said: "When I came back from China, I had so much stock, but I had nothing to do with it during the [Covid-19] lockdown, so I started making wigs and I became quite competent – I sort of went viral online.

"It got hard because we were using the spare room as a hair salon, but then my niece came to live with us, and we were doing it in the living room or the garden because it became so overcrowded.

"I was gagging for this opportunity [at Angel Yard], I was so grateful to get it.

"I believe this area is now a place to come to, there is a feel-good factor about it."

Another Edmonton entrepreneur is Jyotsna Shelley, who finished a masters in character animation earlier this year. The former Edmonton County School student had been running her illustrations business Jyots TV from her bedroom – before the opportunity arose at Angel Yard.

"You can't get this type of space in London," she said. "There is a great community and help available for your business. For me it is both an office and studio space. I sell stuff here and have meetings with clients.

"It is great to have this in the area. I volunteer at local schools as well and it is so deprived. The young people here are just looking for ways to make money."

Jyotsna explained that an art studio anywhere else in London would cost £600 per month before bills, but she was able to let her unit at Angel Yard at the introductory rate of £200 including bills, giving her time to establish her business.

Celina Momodu, director of social enterprise Fore Street for All, added: "The concept of having this space has been a yearning for transformation – the idea started during the Olympics and, ten years later, we have been able to change the way this area is seen."



Illustrator Jyotsna Shelley

Views sought on potential new LTNs

Enfield Council has launched two early public consultations on proposed low-traffic neighbourhoods (LTNs) in different parts of the borough.

The potential new LTNs – dubbed 'quieter neighbourhoods' by the council – are being planned for 'Bowes East' and Edmonton Green.

The first would encompass seven streets in an area to the east of Green Lanes and south of the North Circular, not far from the existing 'Bowes Primary Area' LTN the council installed in 2020 and made permanent last year.

The second LTN proposal is for a large area of Edmonton Green, to the east of Fore Street and north of the North Circular, including more than 50 residential streets in total.

LTNs typically involve a combination of measures to limit through-traffic on residential streets, such as enforcement cameras, bollards and plant boxes, restricting access for motor vehicles to local traffic only. Cyclists, scooters and mopeds are usually still permitted to pass through LTNs.

No detailed plans for the two new Enfield LTNs have been published, with views only being sought from residents at this stage on how current traffic levels impact their lives and what type of measures they would like to see to restrict motor vehicle movements in the area.

In its consultation page on the two proposals, which is open for public comment until 8th October, the council states: "Over the last few years, Enfield Council has taken action to redesign many of our streets, introducing new pedestrian crossings, segregated cycle lanes, school streets and cycle parking alongside other initiatives such as cycle training and free bike repairs.

"Quieter neighbourhoods form part of this comprehensive approach that the council is taking to reduce the speeds and volume of motor vehicles in the area and create an attractive and safe environment for people to travel by active and sustainable modes, such as walking and cycling. The long-term benefits we hope to see include improvements in people's health, less congestion and safer roads, and improved air quality.

"The quieter neighbourhood initiative considers the introduction of features such as modal filters, one-way streets, school streets and cycle parking."

For more information on the Bowes East Quieter Neighbourhood:
Visit letstalk.enfield.gov.uk/boweseastqn

For more information on the Edmonton Green Quieter Neighbourhood:
Visit letstalk.enfield.gov.uk/edmontongreenqn



Barry at North London Hospice

Enjoying life again

To mark Hospice Care Week (9th–15th October), Alison Moore from North London Hospice spoke to musician Barry about his experience there

Hospice care comes in many forms. For Barry, our music therapy and breathlessness and fatigue groups have helped him realise that life is still there for living.

As a musician – the frontman and drummer in a reggae band for many years – Barry brings an infectious and encouraging passion to the weekly music therapy group at North London Hospice in Winchmore Hill, home of our outpatient and wellbeing services. He has even the most reserved attendee tapping their feet or picking up a tambourine and joining in!

“I love that class,” says the 55-year-old father-of-seven from Enfield. “It gives people a real sense of confidence, inclusion and encourages expression. It gets you out of the house and gives us all something to do that doesn’t revolve around medical appointments. You can just be in the moment. Every week, everyone that attends, leaves feeling better than when they arrived.”

Diagnosed four years ago, Barry is living with chronic obstructive pulmonary disease (COPD) emphysema, which in the last two years has seen his breathing deteriorate. It was in December 2022 after being admitted to intensive care with breathing difficulties for the

third time that hospice support was recommended.

“I was very frightened. It was scary for my family too, but my body just wasn’t working, and I knew North London Hospice would look after me. They’d have the care facilities and the expertise to help. But they’ve given me so much more.

“Sometimes you need to talk to someone, other than your family, and they are always there if I need to talk. They make me feel things are okay. The hospice has been able to really support my mental wellbeing.”

“The hospice has been able to really support my mental wellbeing”

Our specialist teams provide individualised care planning that always tries to help patients achieve ‘the best of life, at the end of life’. In Barry’s case this involves regular home visits by specialist nurses who monitor his medication and have helped him manage his anxiety, and bi-weekly visits from our physiotherapist Rob, who takes him for walks to build and maintain strength.

Barry says: “He always encourages me to go just that little bit

further. I’ve made real progress, thanks to Rob.”

Barry also attends our breathlessness and fatigue sessions, which have given him coping strategies and help him continue to sing.

“My condition means I often struggle for breath. There are six or seven people at each session who are going through the same or similar things as me, and that makes me feel like I’m not alone. The sessions have provided me with techniques on how to cope in situations if I panic or get out of breath.”

Barry has six sons and a daughter and is once again able to make music with one of his sons: “I’ve played the drums since the Boys’ Brigade, and it makes me happy to still be able to play and make music with my son. I do it in stages and he puts it all together.”

He adds: “The support of the hospice has been a life saver to me. My world was crumbling around me, and I was at risk of becoming a hermit. The care they are giving me, has given me the confidence to be my extrovert self again! They’ve made me realise I can still live my life; I just can’t run around the block any more!”

If you’re interested in finding out more about the support North London Hospice can offer, an open afternoon is being held on Tuesday, 10th October, from 2pm. Register your interest: Visit bit.ly/3PHXFU9

A growing platform for Bush Hill Park

Amanda Wayne on how her group of volunteers have helped revive the community garden at Bush Hill Park Station

Over the last five years, a group of keen locals have been quietly nurturing the garden at Bush Hill Park Station, bringing the platform into bloom.

Long-standing Enfielders will fondly remember Bush Hill Park Station for its flower displays, but green-fingered efforts sadly declined over the years. Fortunately, Bush Hill Park (BHP) Station Community Garden is now an active local group with renewed interest and ambitions for the station.

By reviving overgrown areas and unused patches, the platform is now thriving with pollinators and diverse plants.

BHP Station Community Garden is formed by a handful local residents

As you stroll along the platform you’ll spot the gravel garden, complete with apple trees, honeysuckle and geraniums, framed by willow fencing. The thriving British wildflower meadow is filled with daisies, campions and poppies, bees and butterflies all summer long. A little further down are the newest additions – two raised beds, built from scaffolding boards backed by hedge-rows. One is filled with herbs and flowers and the other is for fruits, vegetables and sunflowers.

This year the newly-planted vegetable patch has sprouted into life, with tomatoes, courgettes, chard, French beans and carrots, grown in organic soil made by the group’s DIY composter.



Volunteers get to work on the platform at Bush Hill Park Station

and we are generously supported by Energy Garden – an initiative to improve biodiversity around existing London transport infrastructure, funded by the sale of community-owned renewable energy. As volunteers we now come together weekly to tend to the platform garden, doing tasks like watering, weeding, pruning and sowing.

In 2018, Energy Garden donated colourful timber planters for the northbound platform, now nurtured by residents. Since 2021 the focus has been on landscaping the disused grass banks on the southbound platform and, this year, the garden put on its brightest display.

It’s amazing what a difference a few dedicated pairs of hands can make. The raised beds we built are thriving and it makes us immensely proud when we see people admiring the gardens while waiting for a train.

As the abundant summer growth slows, we are planning ways to pickle and preserve vegetables grown in the garden and exciting plans are being hatched to build a bug hotel.

Bush Hill Park Station Community Garden meets weekly and always welcomes volunteers. Get in touch for more information: Visit facebook.com/BHP.station.community.garden

Advertisement



Education officer and artist Cathy Wade exploring nature, the environment and child led wayfinding

Art, nature, community and heritage provide fresh perspectives and new experiences of the Lee Navigation!



On 24th August artists, community groups and local partners created a jam-packed day of creativity for the whole family along the waterway. The summer event was part of the Hinterlands Enfield project by the Canal & River Trust, which began earlier this year. The project was created to support artists to work with community groups and local partners to collectively explore the industrial heritage, diverse culture and social histories that have shaped the present day Lee Navigation, and its surrounding communities.

The August event was an opportunity for the artists to share their research and work so far. From Stonebridge Lock, through Tottenham Marshes to Chalk Bridge and Bloqs in Anthony Way, people had the chance to take part in an array of thoughtful and creative activities that included a philosophical guided walk through our innate connection to water, foraging for colour through nature; a collective artwork on Chalk Bridge; a camera obscura experience; and encounters with textile and sound sculptures, folklore story-

telling and banners that overhung the water echoing voices of the past and present. In addition to all this, Jazanne Arts presented 'Exchanging Dreams', a wonderful performance at the Bloqs event space followed by a mouthwatering barbecue, poetry and live music.

Throughout the day local partners EnCaf, Lea Valley Rangers and Stonebridge Lock Beekeepers showcased the special bio-diverse and freshwater habitat qualities of the Lee Navigation and neighbouring Tottenham Marshes and Banbury Reservoir, through guided walks and talks. The Canal & River Trust local team and volunteers were also on hand to offer free canoeing, giving families a very special view of the canal from the water!

The full programme of artist and community-led activities combined to create new experiences and fresh perspectives of the Lee Navigation for everyone who came. We'd like to say a huge thank you to everyone who visited and participated.

There is more yet to come from the Hinterlands Enfield artists and local partners as they begin to

collectively explore what role the Lee Navigation could play in the future. Now more than ever we need to protect and support our urban blue and green spaces to flourish for the climate, community and environment. The project will culminate in 2024 with 'Enfield Biennale' which will aim to transform the waterway between Chalk Bridge and Bloqs through temporary art.

If you would like to get involved, whether volunteering or story sharing, we'd love to hear from you. Were you part of the area's industrial heritage? Artist Chantelle Purcell recently discovered the inspirational 'Rego Girls' history; were any of your family members part of the Rego Girls? Do you have photos of the Lee Navigation over the years? Please get in touch with us at hinterlandsenfield2324@gmail.com.

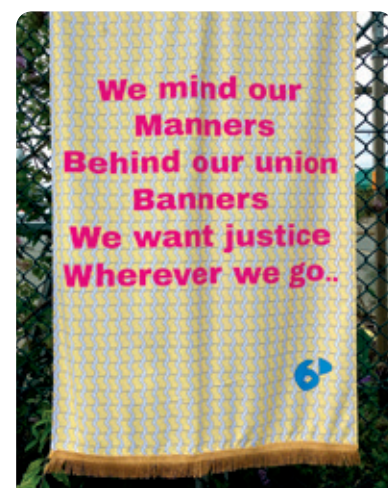
For more information about the project and the individual artists and partners involved please visit [instagram @Hinterlandsenfield2324](https://www.instagram.com/Hinterlandsenfield2324) or our website canalrivertrust.org.uk by searching 'Hinterlands'. With thanks and gratitude to Arts Council England and Enfield Council for financially co-supporting this project.



Foraging for Colour workshop with Marissa Stoffer Credit Andy Tryner



All aboard for the Camera Obscura experience by Pinhole London and Barge FIODRA Credit Andy Tryner



Chantelle Purcell's 'Rego Girls' banner on the towpath. A reflection by the artist through her 'Labour & Land' research into the areas rich industrial, cultural and social histories



Canal & River Trust local team on hand with canoeing experiences Credit Andy Tryner



Exchanging Dreams performance by Jazanne Arts at Bloqs outdoor event stage Credit Andy Tryner

Demands to tackle illegal car meets as residents ‘blighted’ by noise

Cars modified with exhausts sound like gunfire

BY JAMES CRACKNELL

Action to tackle illegal car meets on the A10 is being demanded amid late-night noise pollution and speeding issues along the road that a local MP says are “blighting the lives of residents”.

Colosseum Retail Park in Southbury, beside the A10 dual carriageway, is one of the sites regularly being used as a meeting point for drivers late at night to show off their cars, usually modified with loud exhausts that can create sounds like gunfire.

The events feature young drivers skidding their cars around in circles or ‘doughnuts’ in the car park, before often racing each other along the A10.

Bush Hill Park councillor James Hockney recently submitted a petition to Transport for London calling for additional speed cameras along the A10 but says illegal car meets – particularly at Colosseum Retail Park – are also a significant menace and noise nuisance for local residents.

The Conservative councillor says there is a plan to install concrete blocks and bollards throughout the car park which would deter illegal activity at night, while still allowing shoppers to park during the day.

However, Cllr Hockney has been frustrated with delays to the plan being implemented in recent months. He told the *Dispatch*: “It is simply unacceptable

that we still do not have measures in place to curtail the car meets and dangerous driving at this location. I have been very concerned about any delays to measures that will protect public safety.”

Colosseum Retail Park is due to be redeveloped for housing in the near future, but it appears the development has stalled amid rising construction costs.

The retail park’s management is said to be supportive of the proposed measures to prevent illegal car meets. Cllr Hockney added: “To tackle the noise and speeding on the A10 and the car meets taking place in car parks and business parks across the borough means that there are many different organisations involved. All of whom need to play their part.”

“We are outraged that residents are blighted by this illegal activity in Enfield”

The Metropolitan Police is planning its own series of measures to tackle the issue. A spokesperson said: “Officers have been developing a robust strategy to deal with the dangerous and reckless actions of those that have been attending these car meets.

“There has been some good results to date, with usage of CCTV footage enabling officers to close the area off and order people to leave. Vehicles that have been observed committing offences are stopped and processed

under Section 59 of the Police Reform Act.

“Officers will continue to act in this manner until the message is clear, it will not be tolerated and we will take cars from those who are irresponsible and risking the safety of others.”

Enfield North MP Feryal Clark said: “The problem of car racing along the A10 and Mollison Avenue is blighting the lives of our residents. I continue to receive complaints about the misery this is causing.

“I will work with residents and local police every step of the way to try and put a stop to this dangerous anti-social activity.”

An Enfield Council spokesperson added: “We are outraged that residents are being blighted by this illegal activity in Enfield

[...] The council is proactively working with landowners to make modifications to their car parks to prevent car stunts and other anti-social behaviour.

“The council currently has Public Space Protection Orders (PSPOs) in specific ‘hot spots’ which gives us and the police more powers to intervene, but over coming months we will consult on a borough-wide PSPO to tackle this scourge.”

Two public meetings on tackling A10 racing and car meets are taking place: on Tuesday, 3rd October from 7.30pm at Wheatsheaf Hall, Main Avenue, Bush Hill Park; and on Monday, 9th October from 7.30pm at St Peter’s Church Vera Avenue, Grange Park N21 1DN.

Cafes at Oakwood, Town, Trent and Whitewebbs parks have all been forced to close



Cafés at four Enfield parks forced to close after ‘contract breach’

Council says it hopes to find new tenants to run the cafés “as soon as possible”

BY JAMES CRACKNELL

Cafés in four borough parks were all suddenly shut down by Enfield Council last month after the leaseholders were accused of breaching their contracts with the authority.

The popular cafés at Town Park, Trent Park, Oakwood Park and Whitewebbs Park were all closed – without any warning to customers – on the morning of Tuesday 13th September. A “notice of forfeiture” was attached to each of their doors by Equivo Ltd, acting on behalf of the council.

The notices warned the leaseholders for each café, which have different names but are all owned by the same person, that “the landlord is entitled to repossess the premises and has now exercised their right following a breach of the lease [...] Any person who attempts to enter these premises without express permission of the landlord may be liable to civil and/or criminal proceedings being brought against them”.

Ozgur Celebi is the owner of each of the businesses – Enfield Catering Ltd, Oakwood Catering Ltd, Town Catering Ltd and Trent Park Catering Ltd – that operate the four cafés. The *Dispatch* attempted to reach him for comment.

The council has said it will seek to find new operators for the cafés “as soon as possible”.

Sean Wilkinson, chair of the Friends of Whitewebbs Park, told the *Dispatch*: “These are important

community resources. It’s all very well the council saying they haven’t paid the rent, but the council is responsible for the lease and ensuring a service is available for the general public.

“At Whitewebbs, the café provided a service that was valued by the park users. It contributed to the health and mental health of a large number of people in the community and I think the council has an obligation to ensure that the service is maintained.”

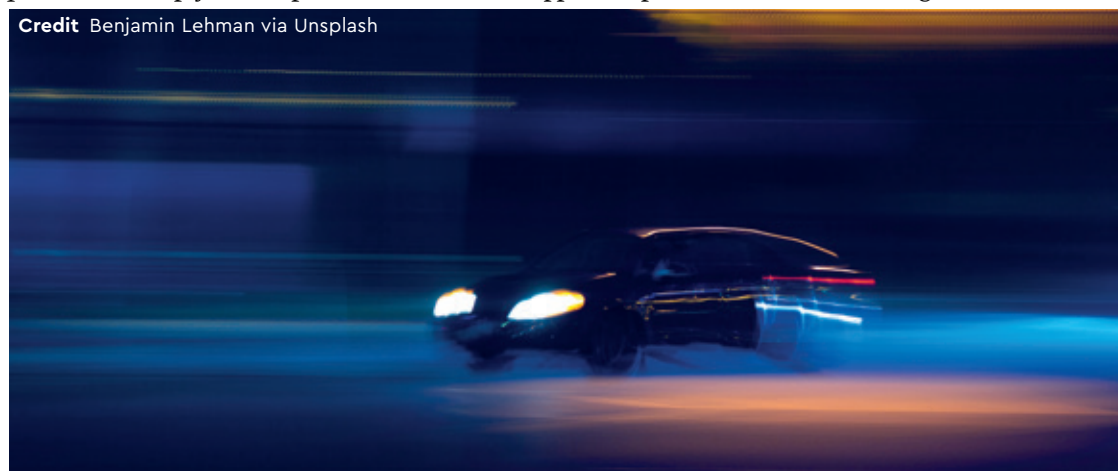
An email sent by the council’s parks team to local stakeholders claimed the closures were “a positive step towards providing catering options which align to the park and its users”.

Sean added that he felt sorry for the many workers who have likely lost their jobs as a result of the closures. He said: “The people who have worked at Whitewebbs Café made a tremendous effort to make it a community cafe and there was a good relationship with the customers.”

A council spokesperson said: “As a result of forfeiture of leases, Enfield Council has taken possession of the cafés at Oakwood, Enfield Town, Whitewebbs and Trent parks and will look to find a new tenant as soon as possible to minimise disruption.

“We want all our parks to have good facilities so they can be enjoyed all year round, which is why by 2026, all our major parks will have café and toilet facilities.”

Credit Benjamin Lehman via Unsplash



Advertisement



We offer licence advertising for local businesses

Call Klaudia Kiss on 07732 000430
Email licences@socialspider.com

Bring out your inner artist Beginners to Improvers **Art Class**

Comprehensive, Fun, Step-By-Step, Absolute Beginners to Improvers Art Class. Meet new friends, learn new skills, and create original works of art!

- 14 Week Course
- Once a Week
- Part Time
- Morning or Afternoon



Cockfosters & Enfield
Schindler Hall Oakwood
CALL NOW FOR DETAILS
020 4542 7606

Next course starts soon!
Limited spaces!

Got a story? Email enfielddispatch@socialspider.com

Advertisement

EDMONTON YOUTH HEROES



★ ★ Sponsored by **edminitions** the big club for little shoppers ★ ★

Helping promote healthy lifestyles

A volunteer at an Edmonton youth centre was among the winners at the annual Ignite Enfield Youth Achievement Awards ceremony hosted by Enfield Council.

The celebration of the achievements of inspiring young people from Enfield highlights their success and commitment to the local community.

This year's ceremony was held at Cineworld in Southbury and presented five awards. The winner in the 'inspiring young volunteer' category was Jessica Botchway, who has been volunteering at Exodus Youth Worx UK since the pandemic. She has been instrumental in developing and running the youth centre's healthy eating and lifestyle programme, helping to show teens in Edmonton the



Jessica Botchway with her award
benefits of home-cooked, nutritious food. Jessica told the *Dispatch*: "We taught the younger years the benefits of eating healthily and about saving money on food. It was a six-week

course with between five and ten people. On the last few days they pitched a main meal and dessert to make as a healthy option.

"It is about teaching them the value of money and being healthy with the ingredients they buy.

"During the lockdown in 2020 I was helping with parcel deliveries to local families and since the end of lockdown I have been in the youth hub teaching kids.

"I have gained lots of skills in how to communicate with people and helping them with different things."

Jessica is now studying

sociology and health and social care at St Anne's Catholic High School for Girls and hopes to have a career in neonatal care.

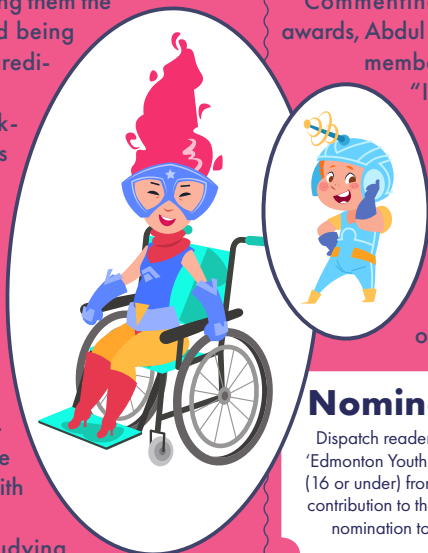
Commenting on the youth achievement awards, Abdul Abdullahi, the council's cabinet member for children's services, said:

"I'd like to thank our inspiring young leaders for creating the Ignite Awards.

"It was a real privilege to be invited to the awards ceremony to meet so many amazing and committed young local people, each with their own personal story to tell."

Nominate your heroes

Dispatch readers are welcome to nominate their own 'Edmonton Youth Hero' – an inspirational young person (16 or under) from Edmonton who has made a valuable contribution to their local community. Simply email your nomination to EnfieldDispatch@socialspider.com



North Mid excluded from final Superloop route proposal

BY JAMES CRACKNELL

A new express bus service through Enfield is set to launch later this year – but will not serve North Middlesex Hospital despite pleas from local NHS bosses and Enfield Council.

Transport for London (TfL) confirmed last month that the Superloop 1 (S1) route between North Finchley and Walthamstow – via Arnos Grove, Palmers Green and Edmonton – would be introduced within a few months after receiving largely positive feedback during a summer consultation period.

A report produced summarising the consultation responses showed that 79% of respondents said the new service would be “more convenient” for them, 76% thought it would be quicker, and 71% said they would be more likely to replace a journey by car with the new express bus service.

But the report also reveals that Enfield Council, North Middlesex University Hospital NHS Trust, Enfield Transport User Group, London Assembly member Joanne McCartney and campaign group Future Transport London all urged TfL to include a

Superloop stop at North Mid – pleas that were ignored.

Of concerns raised during the consultation, the lack of a stop at the Edmonton hospital was second only to concerns raised about a reduction in frequency of the existing 34 bus service, which follows a similar route to the proposed S1.

In response to concerns about the 34, TfL agreed not to reduce the frequency of services in the evening. It has also now included “additional stop locations at Meridian Water to better serve the development and provide improved pedestrian access” plus new stops in Chingford and Walthamstow.

A stop in Palmers Green was added to the route prior to consultation, while other stops within Enfield borough include New Southgate, Arnos Grove and Silver Street stations. The latter is intended as a connection for North Mid, but the NHS trust warned: “The proposed bus stop at Silver Street does not currently present a safe route to walk between the train station and the hospital.”

Enfield Council also described Silver Street Station as being “a considerable distance from the



hospital” and raised concerns about delayed plans for a new pedestrian crossing at Sterling Way near the overground station.

The council also suggested adding a stop at Great Cambridge Roundabout, so the Superloop service could connect to other buses heading into central London, but TfL has said this would significantly slow down

the route, which is designed to provide much faster journey times along the North Circular.

London mayor Sadiq Khan said: “It’s great to see large numbers of Londoners saying these new routes could replace private car journeys, offering even more sustainable transport options and helping to build a better, fairer and greener London for all.”

Three Enfield schools contain unsafe concrete

BY SIMON ALLIN, LOCAL DEMOCRACY REPORTER

Three schools in Enfield contain the type of concrete prone to collapse that last month caused a nationwide building safety crisis.

St Ignatius’ College in Bulls Cross, Winchmore School in Winchmore Hill, and Ark John Keats Academy in Enfield Wash, all identified reinforced autoclaved aerated concrete (Raac), but none have been forced to close.

The concrete material, used in the construction of schools and other public buildings from the 1950s to the 1990s, has a lifespan of around 30 years. Shortly



before the start of the autumn school term, the Department for Education (DfE) told 104 schools to stop using buildings known to contain Raac until safety measures had been put in place. It said more than 50 schools had

already installed “mitigations” this year.

St Ignatius’ College, a voluntary-aided secondary school, was included on an initial DfE list of affected schools, and the council later confirmed Winchmore School, a state secondary, also had Raac. Two weeks later Ark John Keats became the third school confirmed as having Raac.

A council spokesperson said: “The health and safety of staff and pupils is our top priority and Enfield Council has been working closely with all local schools to identify whether they have been affected by the recent issues with Raac.

“Winchmore School has identified Raac in a small part of the

school in a changing room and corridor ceiling, between the changing room and the sports hall. This area has been sealed off for some time so there is no danger to staff and pupils.

“St Ignatius’ College has identified Raac in different parts of the school but this is also in an area of the school that has been sealed off.

“This situation continues to unfold, and Enfield Council will continue to work closely with all our local schools to support them as fully as possible through this challenging period.”

John Keats principal Katie Marshall said: “Unfortunately there are Raac panels in the sports hall walls. They are extremely low risk.”

Better leisure centres on the way

Enfield Council has announced it is ditching one leisure provider in favour of another.

Fusion Lifestyle’s contract to run Enfield’s leisure centres and swimming pools will end on 3rd December 2023, after an agreement was reached to end their deal. A new provider, Greenwich Leisure Ltd (GLL), will takeover the running of the borough’s facilities under its brand name, Better.

The move follows concerns raised by the council earlier this year over how Fusion was running local leisure facilities. A council report published in May stated Fusion’s finances had been “severely affected by the pandemic” and that since December last year, Albany, Edmonton and Southbury leisure centres had experienced “a significant number of maintenance faults that have impacted on the availability of the swimming pools”.

Chinelo Anyanwu, the council’s cabinet member for culture, open spaces and local economy, said: “We are working with GLL to ensure that there is a seamless transition so that staff and users of our leisure centres are not impacted by the change of provider. We will also invite community groups who use these facilities to meet with GLL, to discuss arrangements going forward [...] Enfield Council is committed to improving leisure and sports opportunities for local people.”

Chase Farm opening later

Chase Farm Hospital will be restoring normal opening hours for its urgent treatment centre after over a year of reduced hours caused by staffing shortages.

Royal Free London NHS Foundation Trust confirmed patients would be able to attend the urgent treatment centre between 8am and 10pm daily from 16th October, instead of closing its doors at 8.30pm as it had been doing since July last year.

Enfield North MP Feryal Clark campaigned for the restoration of the full opening hours. She said: “Everyone deserves access to the right healthcare when they need it most, and I will continue to fight for the people of Enfield North to ensure they do so.”

Waltham Forest College



think
BIG

OPEN EVENT

Wed 1st November, 4pm - 7pm

GUIDED TOURS

TASTER ACTIVITIES

ADVICE & GUIDANCE

APPLY FOR A COURSE



Visit **waltham.ac.uk** or
scan the QR code to register.



The government is letting us down on climate change and the economy

In our latest MP's column, Enfield North MP Feryal Clark slams the government's economic record and for pushing back net zero targets

We must tackle the cost-of-living crisis and climate crisis together.

The last year has been incredibly challenging for everyone in Enfield North. Locally, I have been working hard to address this, but I know the cost-of-living is hitting everyone.

Working hard, buying a home, raising a family – all these things are difficult enough as it is. People expect the government to keep our economy stable so that their family's future is secure. But this Tory government has failed to uphold its end of the bargain.

Rising mortgage costs are adding to the painful squeeze on family finances. Meeting monthly payments is forcing tough choices, from having to cut back on the weekly shop to putting holidays and other family treats on hold.



Feryal Clark was elected to represent Enfield North in December 2019 Credit parliament.uk

I know from talking to residents that people in Enfield North are worried about what the future holds, particularly about their mortgages. But the government has no plan to fix this. Thirteen years of economic

mismanagement and the disastrous 'mini budget' by Liz Truss have broken our economy.

Families are left to pay the price for this, with people in Enfield North now paying an extra £4,700 a year on their mortgage thanks to the Tory mortgage bombshell.

Not only is the government gambling with people's finances, but they're also gambling with people's futures by delaying our climate targets. Residents and local businesses are right to ask: what does this decision mean for them? How much will it cost them?

This U-turn on areas like energy efficiency measures will push up bills for millions of people and increase our reliance on imported gas. Delaying this transition will only add costs to families and damage investor confidence, risking jobs and security.

Residents deserve certainty, but this is a government that cannot keep its word, they

cannot be trusted to run our country, and they are trashing our reputation internationally.

I've always been clear: we must tackle the cost-of-living crisis and climate crisis together. But the Conservatives are doing the opposite, tackling neither, and making both worse.

Our focus must be on creating jobs, growing the economy, and bringing down bills for families and businesses here in Enfield North and around the country, and yet, last month, the government's decision undermined all three. Delaying our climate commitments will only cost the country more. This is a short-term decision by a government short on ideas and short on time.

Feryal Clark is a Labour MP for Enfield North. If you are a constituent, you can get in touch with her by phone or email:

Call 020 8804 4543

Email feryal.clark.mp@parliament.uk

ADVERTISE WITH US

Our newspapers are a growing and valued part of the local community – loved by readers who want to read about what matters to them. Be part of that and advertise with us!

Our publications *Enfield Dispatch*, *Haringey Community Press*, *Barnet Post*, *Waltham Forest Echo*, *Newham Voices* and *EC1 Echo* cover a wide area of North and East London and part of The City.

For the borough of Enfield, we distribute 15,000 free copies to readers via local, community venues, and door-to-door, with a total estimated readership of 45,000 people.



Call Klaudia 07732 000 430
Email klaudia@socialspider.com

Advertisement

Lancaster Foot Care Service Lancaster Centre EN2 0BU

Volunteers Needed

This friendly local charity provides basic foot care to Enfield's older residents. New volunteers are needed to join our team to assist for one or two half days a week.



No experience necessary,
full training given.

To register your interest
please contact
Tim on 07948 879 547

Or visit the centre
on Tuesdays or
Wednesday mornings

Charity no. 1157622



CRM Agape House

Holy Communion & Miracle Service
Sunday 29th October 2023 @ 10am

Raynham Primary School, Raynham
Terrace, Edmonton N18 2JQ

All are warmly invited. Refreshments
will be served at the end of the service.

Call 07951 881 991
Visit crmagapehouse.org.uk

ELECTRICIAN

- NICEIC Certificates
- 24/7 Fault Repairs
- Fire Alarm
- WiFi & Wired Internet Cabling
- Telephone Repair & Installation
- CCTV & Ring Door Bells

07544 800166

Sign up to the Enfield Dispatch newsletter

Scan the QR code



LETTERS

Send us your letters

Got an opinion on something in Enfield? We accept letters of up to 150 words from people and organisations in the borough. Email EnfieldDispatch@socialspider.com before the next deadline on **Monday 16th October**.

Cost of letting

Dear Enfield Dispatch

In your September edition [Hundreds of 'no fault' evictions in Enfield since govt pledge to ban them, Page 1, Issue 60] Edmonton MP Kate Osamor said the government was more interested in protecting the profits of landlords than the families they evict.

In fact, the opposite situation is true. Successive governments have made it less profitable for landlords. Between 2014 and 2021, landlords on average were making 'year one' cash profits of 23% of rental income, but interest rate hikes have seen this plummet to under 4%. In addition, buy-to-let landlords now must pay tax on their entire rental income.

In a recent article in the *Sunday Times* a landlord said he was being forced to evict a family because he could no longer afford to pay the mortgage and the rental income wasn't enough to cover expenses, but neither did he want to increase the rent. Landlords are being driven to sell up.

Neil Littman
Winchmore Hill

Cost of Ulez

Dear Enfield Dispatch

Ulez penalties are now in force across the whole of London. Millions of pounds are being reaped by mayor Khan from older but perfectly MOT-compliant vehicles. Many have no choice but to buy compliant models, others cannot afford a replacement and have abandoned travelling into London. Hundreds of thousands of livelihoods have been turned upside down, business disrupted, customers lost. Disabled and patients visiting hospitals in the zone face undeserved stress. Family get-togethers entail a penalty charge.

What gain makes this all worthwhile? There is none comparable with the costs of this anti-car policy. Air pollution derives from many sources, but London's air has been improving over the years, from before Ulez launched. The mayor's health claims are shroud waving to justify what is at heart a tax.

Peter Gibbs

Vice president, Federation of Enfield
Residents and Allied Associations

Cost of waste

Dear Enfield Dispatch

With Birmingham joining the growing list of bankrupt councils, Enfield residents will naturally be worried over our borough's £1.1bn debt. Of concern should be its share of the North London Waste Authority's £1.5bn Edmonton incinerator project expenditure.

Since the incinerator was proposed a decade ago, on forecasts of ever-increasing North London waste levels, they have instead flatlined, while the recycling target has increased by a third and the government now requires a 50% drop in unrecyclable waste over the medium term. These will further increase the need to import waste. Such targets require an uplift in mechanical recyclable waste sorting. Installing such a feature at Edmonton will allow the residual to be burnt within London's existing incinerator fleet. Instead, we face a public body planning to operate in commercial space on a raft of public debt, to burn the waste of others, generating immense volumes of climate-changing gasses and health-harmful emissions.

Karl Brown
Palmers Green

Cost of housing

Dear Enfield Dispatch

In light of Enfield's housing crisis, the Clay Hill scheme for 58 new homes is to be cautiously welcomed. However, there are some notable concerns. The scheme is touted as 'affordable housing' but unless the council has a binding commitment, there is a high chance the developer will dramatically reduce its social housing.

Planning documents claim two stations are within 'walking distance' but Crews Hill or Gordon Hill are 2km away. The other public transport option is a bus which runs twice an hour. The new-build homes are also not intended to be heat efficient or low carbon. The site is brownfield and may be better utilised as a residential area – but this mustn't set a precedent for wider development of adjacent Green Belt land.

Dr Katie Knight
Enfield Green Party

Femi Koleoso performing with Ezra Collective Credit Frolzart via Wikimedia Commons



Enfield Grammar 'old boys' win Mercury Prize

A jazz band including two members from Enfield have scooped one of the biggest prizes in the music industry after their album *Where I'm Meant To Be* won the 2023 Mercury Prize.

Ezra Collective is composed of drummer Femi Koleoso and bassist TJ Koleoso – both alumni of Enfield Grammar School – plus keyboardist Joe Armon-Jones, trumpeter Ife Ogunjobi, and tenor saxophonist James Mollison.

The group beat off competition from Arctic Monkeys and Jessie Ware to win the Mercury Prize last month. It follows a highly-acclaimed performance at Glastonbury in June.

Ezra Collective are the first-ever jazz band to win the prize. Accepting the award, frontman Femi said: "If a jazz band winning the Mercury Prize doesn't make you believe in god I don't know what will!"

"This moment that we're celebrating right here is testimony to good, special people putting

time and effort into young people playing music.

"This is not just a result for Ezra Collective, this is not just a result for UK jazz, but this is a special moment for every single organisation across the country ploughing their efforts into young people playing music."

Femi went on to reel off a list of organisations that he said had contributed to Ezra Collective's success, including Enfield Grammar.

"These brothers are a shining example of what dedication and hard work can achieve"

In a congratulatory message on its website, Enfield Grammar School said: "This is such fabulous news and we are delighted for our 'old boys' and their band mates.

"At the awards ceremony, Femi's speech thanked people and organisations that gave

support during their musical journey, and again, we are so proud to get a mention and know how our passionate music department was one of the various platforms that helped springboard these ex-students to where they are now. He emphasises how important all our local youth groups and services are in the UK, believing in and giving young people a chance.

"Mr Escott, who is still teaching within our music department, was one of their music teachers when they were here in school and he recently got the chance to meet Ezra Collective at Abbey Road Studios – what an honour!"

The school added: "These brothers, Femi and TJ, and their band mates, are a shining example of what dedication and hard work can achieve, from the year seven band to Mercury Music Prize winners!"

Watch the moment Ezra Collective won the Mercury Music Prize:
Visit [youtube.com/watch?v=4yJVHOPkC8w](https://www.youtube.com/watch?v=4yJVHOPkC8w)

Collective's special school fundraiser

BY ANDY KILMARTIN

Since arriving in London as a young man seeking fame and fortune, I have played Glastonbury's Pyramid Stage and the Isle of White Festival. While having Enfield as my base for the past 30 years, I have travelled to perform across the world – perhaps as the world's most unknown international rock star!

At the end of October my band The Andy Kilmartin Collective is playing a fundraiser for Waverley School at Bush Hill Park Bowls Club, a beautiful setting in the heart of Enfield.

Waverley is a special school in Enfield with 162 pupils across three sites and two pre-schools, one of which supports pupils with autism. The main site located in The Ride, Enfield Highway. Pupils who attend Waverley have complex and profound learning difficulties and often have a range of health and mobility needs. But the school celebrates each pupil's unique strengths and endeavours to help every pupil to be their very best.

The school's vision is "celebrating individuality by challenging expectations and sharing success" and this is embedded throughout what they do. Waverley works closely with a variety of health professionals to ensure health and

Andy Kilmartin (pictured right) has played all over the world



therapy needs are incorporated into pupils' daily experiences.

They have developed a bespoke curriculum and help students communicate effectively and learn about the world around them. Staff have a deep understanding of each child's motivators and interests, striving to create learning environments that not only meet their needs but inspire and develop a sense of wonder.

The Andy Kilmartin Collective has now been together for over five years and the band includes some of the best musicians I have worked with in my lifetime. We are blessed to be able to play a fundraiser for this local special school, which delivers a high level of service by a committed team of staff for the people of Enfield.

The Andy Kilmartin Collective performs on Saturday, 28th October, from 8-11pm at Bush Hill Bowls Club, Abbey Road, Enfield EN1 2QP. To buy tickets for £10: Call 020 8805 1858

Sing with us

Jeni Barker introduces Rowantree Choir

Rowantree Choir was set up in 1959 as part of an adult education programme. Currently there are over 60 singers and we are led by our esteemed and multi-talented conductor and musical director, Jonathan Rathbone.

Much of our music is arranged by Jonathan and our choir rehearsals are interspersed with fun and laughter. We sing in four parts; soprano, alto, tenor and bass. Like all choirs we would welcome more tenors and basses. Some women are tenors too!

If you don't know how to read music it really doesn't matter. We have an amazing accompanist and Jonathan is exceptionally skilled at working with all the parts to sing together. At times we even manage to sing without accompaniment – a cappella. Not only does Jonathan go over the music at rehearsals,

but there are also opportunities to practice each part online.

We perform three concerts a year. The next one is in December, which has a Christmas theme with orchestral accompaniment. As well as a short choral work, there are any number of festive songs arranged by Jonathan and carols for audience participation. At Easter, we sing a choral work. The summer concert is a mix of all sorts of music, from shows to familiar tunes through the decades.

If you would like to join, there is no audition and the first term is free. We start rehearsing for the December concert at the beginning of October, so do come along and try us out. And, of course, remember that singing is good for you!

Rowantree Choir rehearses on Tuesday evenings from 7.30pm at Bush Hill Park Methodist Church Hall, Wellington Road, Enfield EN1 2RS. For more information: Visit rowantree.org.uk



Always a friendly greeting at this Greek gastro delight

BY NEIL LITTMAN

Sometimes good places to eat are almost on your doorstep but you don't immediately notice them. I've lived in Winchmore Hill for nearly ten years and passed by Babinondas in Green Lanes many times on the bus or on foot, but hadn't gone in until recently.

I finally visited Babinondas on a Sunday evening, walking there by way of the New River. From the outside it looks unlike other restaurants in the area and is best described as 'classic taverna' – my housemate tells me there are lots of places like this in Cyprus. I remarked to my dining companion it was like being in a time warp.

What did impress me was the welcome. A few restaurants make a genuine effort to welcome diners beyond asking "have you booked?" but the greeting at Babinondas made us smile when the owner shook our hands and said "nice to see you again" despite having never met us before! On the second visit a few days later, he said the same again – only this time it was true.

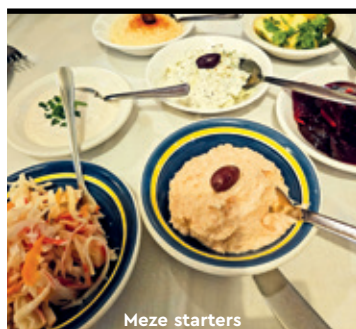
We ordered the mini meze, a bargain at £17.95 and a good way to taste a bit of everything they have on offer. The menu offers traditional Greek-Cypriot dishes with "approximately" seven

starters including hummus, taramosalata, tzatziki and various salads followed by a hot extra starter of vegetarian fritters and deep-fried mushrooms.

It turned out to be nine dishes in total and, to be honest, it was a bit hit and miss with some dishes better than others. I could have done without the crabsticks, and the taramosalata was lacking in fishiness but, overall, it felt more like dining with your relatives than a restaurant. And who is really going to criticise their family cooking?

The mains were very good. My friend had the pork souvlaki and I ordered seabass. Both were served with home-made chips and salad. On the first visit we drank Keo beer and on the second ordered their house wine which they make themselves and was one of the best I have

"We left very happy"



Meze starters

drunk anywhere – smooth and not too strong. I forgot to ask if they sell it by the bottle to takeaway but it is priced at only £16.50 to drink at the table.

On our first visit, one of the dishes served was a complimentary plate of olives and pickled vegetables that my friend demolished before I had a chance to take a photo, hence the excuse for another visit and also to make sure my initial impressions had been correct, and I wasn't imagining that I was on holiday in Cyprus.

Babinondas is more than a restaurant. Many people hold birthdays or other parties here when allowed: I was told various Cypriot organisations have monthly get-togethers in the large dining room and there's a Greek night with a special mezze menu, a band, and the inevitable dancing.

At the end of the meal, the offer of a free drink and more handshaking with the owner, we left very happy. The restaurant was busy on both occasions we visited, a Sunday and Tuesday evening, so booking is advisable at other times. The price for two with drinks, including service, was £54.

Babinondas can be found at 598 Green Lanes (N13 5RY) and is open Monday-Saturday, from 5.30pm-10.30pm, and Sunday 12.30pm-10pm. To book:

Call 020 8886 1010
Visit babynondas.net

LISTINGS

Submit your listing

We can include low-cost community events taking place in Enfield. For next month's listings, email the details of your event to enfielddispatch@socialspider.com by **Monday 16th October**.

BRUNCH

Free Sunday Brunch

Sunday 1st October, 10am-12pm
CRM Agape House, Raynham Primary School (early years building), Raynham Terrace, Edmonton N18 2JQ

A free Sunday brunch, open to everyone with no restrictions. We provide a hot meal, drinks and sandwiches.

Free entry

Call 07951 881 991

Visit cragapehouse.org.uk

FILM

Black Stories Film Series

Every Friday, 6th-27th October, 7.30pm
Dugdale Arts Centre, 39 London Road, Enfield EN2 6DS

Every Friday during October, enjoy a film celebrating notable black stories, identity and culture alongside a meal and drink from EnFood – for just £10. Our Black History Month film programme includes notable titles such as *King Richard*, *The Woman King*, *The Little Mermaid* and *Rye Lane*.

Tickets £10 including food

Visit dugdaleartscentre.co.uk

OPERA

An Evening at the Music Hall

Saturday 7th October, 7.30pm
St Andrew's Church, Southgate N14 5PP

Southgate Opera present an evening of songs from the era of the music hall.

Entry £14 (£11 for Friends of Southgate Opera)

Call 020 8372 2383

Email soperatickets@gmail.com

Visit southgateopera.com

HARVEST

Apple Day at Forty Hall Farm Orchard

Sunday 8th October, 10am-3pm
Forty Hall Farm, Enfield EN2 9HA

Come and join us again for another day of celebrating apples. We'll have varieties for sale that you can't buy in the supermarkets and juice too. There will be juicing demos, a tombola stall, plus a plant sale. We can also help you identify your apple trees.

Free entry

Visit fortyhallfarm.org.uk

TALK

London's Hidden Canal: the River Lee Navigation

Wednesday 11th October, 8pm
Jubilee Hall, 2 Parsonage Lane, Enfield EN2 0AJ

An Edmonton Hundred Historical Society talk by Dr Jim Lewis, titled 'London's Hidden Canal: the River Lee Navigation'. All welcome.

Free entry

Email edmontonhundredevents@gmail.com

MARKET

Devonshire Square Autumn Market

Saturday 14th October, 10am-4pm
Devonshire Square, Palmers Green N13 4QU

A free community market showcasing local artists and creators, organised by Palmers Green Action Team.

Free entry

Visit palmersgreenactionteam.org

ROCK

Redriffe at The Fox

Saturday 14th October, 9pm
413 Green Lanes, Palmers Green N13 4JD

Redriffe are a four-piece classic rock covers band whose tracklist includes music by AC/DC, Slade, Deep Purple, Bad Company and other classic rock acts.

Free entry

Visit whelanspubs.co.uk/whelans-premium/the-fox

JAZZ

Down for the Count Orchestra

Friday 21st October, 7pm
Chickenshed Theatre, 290 Chase Side, Southgate N14 4PE

London's favourite vintage band, Down for the Count All-Stars, is touring new album *Just You, Just Me* this autumn. The band has been making waves on the UK jazz scene with their warm, engaging, and energetic performances as they bring the sounds of the swing era back to life. The show also includes original arrangements of beloved classics.

Tickets £17.50-£22.50

Call 020 8292 9222

AROUND THE BOROUGH

PONDERS END

Camra slams council over loss of pubs



The Picture Palace before its recent conversion to a shisha bar

THE CAMPAIGN FOR REAL ALE (Camra) has accused Enfield Council of not doing enough to protect local pubs after a Ponders End venue was allowed to be converted into a shisha bar and another won permission to become a restaurant.

The Picture Palace in Ponders End High Street closed as a pub in 2021 and is now set to reopen soon as 'Tiger Bay Enfield', part of a chain of shisha bars that serve food and drink, after its owners claimed this represented "continued use as a pub".

But Camra claims that the council has not followed planning rules. A previous application was

submitted by Tiger Bay Ltd in 2021 for change-of-use to a restaurant, which was later withdrawn. The leaseholder subsequently submitted an application to "establish the use of the building as a pub with food provision" and claimed its plans for a shisha bar serving food would fall into this bracket.

The Picture Palace – originally opened as Howard Hall and later used as a cinema – was a JD Wetherspoon pub for many years before being acquired by Hawthorn Leisure in 2016, which continued to operate it as a pub serving food before it closed in 2021 after struggling during the pandemic.

Enfield Council owns the freehold and Ellie Eames, Camra's regional director for London, said it should do more to protect it. The Goat is now the only pub remaining in Ponders End, but was granted permission to convert into a restaurant this year.

Ellie said: "Public houses are a vital part of local life and The Picture Palace was a wonderful example of a place at the heart of the community where people could come together to socialise.

"This irreplaceable social value is part of why pubs are protected by national planning regulations and the Local Plan approved by Enfield Council itself. It's troubling that the council appears unconcerned about the potential use as a restaurant, without a full change of use application, especially when they are the freehold owners."

Camra's local branch made a complaint to the council over its handling of the application for The Picture Palace and an unauthorised extension at the site. However, this was not upheld, with the council saying a retrospective application was now being considered regarding the extension and the use of the premises as a shisha bar "was confirmed as lawful".

Enfield Council and Tiger Bay Ltd have not responded to requests for comment.

EDMONTON GREEN

Vulnerable young people left without water

BY SIMON ALLIN, LOCAL DEMOCRACY REPORTER

A LOCAL MP IS CALLING FOR AN investigation after the residents of a housing block said they were left without water for months.

People living in Enfield Foyer, in Fore Street, reported being unable to shower, wash their clothes or flush their toilets when the building's water supply failed last winter. Other problems still persist now, including intermittent access to hot water.

Residents hope to get compensation but say social landlord Christian Action Housing and Thames Water are blaming each other for the problems.

Enfield Foyer houses 36 young people aged between 18 and 24 who are homeless or are at risk of homelessness. One resident said that when the problems started last November, Christian Action Housing "did say something" about compensation, but she had not heard anything since then.

"It was bad," another resident said. "They were leaving us with nothing. Key workers in the building could not go to the toilet – they couldn't flush it."

A third resident said: "Washing machines were not working, nothing was working – you can imagine the chaos."

Edmonton MP Kate Osamor said: "I'm shocked residents have been offered no rent relief or compensation despite having been forced to live without access to water for months on end. This is a serious incident which the Housing Ombudsman and [water regulator] Ofwat should investigate urgently."

Christian Action Housing said the issues started in August 2022 when Thames Water reduced the water pressure in response to the national hosepipe ban, but this was resolved last December. The housing association said residents were given bottled water and "other relevant supplies" and added the current problems are caused by a "failing water pump" and "once the situation has been resolved, we will confirm the compensation payment award".

A Thames Water spokesperson said: "Our engineers attended multiple call-outs for this site, the most recent in August and June. They found no issues with flow or pressure at the property boundary."

CLAY HILL

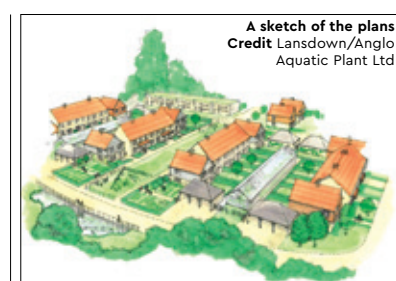
Affordable homes win approval

PLANS TO BUILD 58 AFFORDABLE homes on brownfield land in Enfield's Green Belt have got the go-ahead.

Outline proposals for the development at Anglo Aquatic Plant, a wholesale supplier of pond plants located at 30-32 Strayfield Road, were approved by Enfield Council's planning committee last month.

Existing units will be demolished to make way for the scheme, which will also provide refurbished office space. Half of the affordable homes will be for social rent, with the remaining half classed as 'intermediate' housing.

The plans were opposed by several local groups over their impact on the Green Belt, road safety fears and other concerns, with The Enfield Society, Crews Hill Residents'

A sketch of the plans
Credit Lansdown/Anglo Aquatic Plant Ltd

Association, Enfield Roadwatch and the environment forum among those who objected.

But civic centre chiefs claimed the proposed affordable homes, community allotments, biodiversity enhancements and other factors constituted "very special circumstances" that provide an exemption to the prohibition of building on the Green Belt.

BUSH HILL PARK

Life sentence for Donovan's killer

A "DANGEROUS INDIVIDUAL" HAS been handed a life sentence for the murder of a teenage boy in February 2022.

Timothy Adeoye, aged 20, of no fixed address, appeared at the Old Bailey last month for his sentencing after previously been found guilty of murdering Donovan Allen following a trial in May. Adeoye was handed a life sentence with a minimum of 23 years.

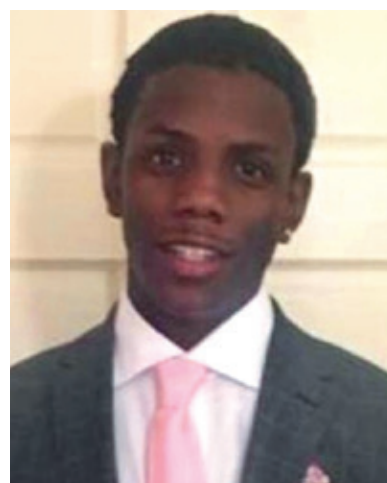
Donavan, 17, was stabbed in the chest by Adeoye and died at the scene on Ayley Croft Estate.

Detective Chief Inspector Linda

Bradley said: "Adeoye is a dangerous individual. He has not taken responsibility for his actions, however he will now have time to reflect on their consequences.

"Of course there is no court outcome that could return Donovan to his family and the thoughts of myself and my team are very much with them today."

Donavan's mother had previously issued an emotional tribute to her son. She said: "Donavan was polite, kind, funny and talented and he was taken from us for no reason at all. There are no words to describe the loss."



Victim Donovan Allen

The man with the golden gloves

Andrew Warshaw speaks to Enfield Town FC goalkeeper Rhys Forster after he picked up an early-season award



Rhys Forster in action for Enfield Town at the start of the season Credit Phil Davison

It’s understandable that Enfield Town fans weren’t too sure what to expect when Rhys Forster took over in goal this season. Former keeper Nathan McDonald had carved out something of a legendary status having been at the club for a total of seven years, covering two spells, before moving on this summer.

Yet, within just a few weeks of the new campaign, Rhys has not only won over the supporters but picked up the very first individual award of his career. Winning the Pitching In Golden Gloves Award – presented monthly to the best keeper in each of the Isthmian League divisions – is testament to a player who was suddenly surplus to requirements at Slough Town in National League South towards the back end of last season, but who more than proved his worth by dropping down three levels with Ascot Town.

Rhys picked up the prestigious Golden Gloves Award for August after conceding just two goals in his first five league games during the month.

While helping Ascot go on to lift the FA Vase at Wembley – the annual football competition for

teams playing in steps five and six of the non-league system – is the highlight of his career so far, being recognised as one of best goalkeepers in the Isthmian League Premier division comes a close second.

“I can’t take all the credit because the boys in front of me have been immense in terms of protecting me,” says Rhys, “but I’m especially proud to receive the award with a new club so early on in the season.

“Even though it represented just a month’s worth of work, it helped me set targets.”

Such as? “I want the Golden Gloves award at the end of the season. Our goalkeeping unit at Enfield want 20 clean sheets in all competitions. If we get ten by Christmas, we’re on course.”

Rhys admits he is sometimes something of a maverick between the sticks, but his commanding presence and intelligent distribution have already endeared him to the club’s fans and teammates alike.

“At all my previous clubs, I had four or five saves to make in every game. It’s very different coming into a club where I may not have a big save to make until the 89th minute, but I’m learning about that

and how important it is to keep my concentration.

“I knew everyone had praise for Nathan so they were pretty big boots to fill. If I’m honest, we are totally different keepers, but the main thing is that I love it here and the fact that the club is owned by the fans is such a big thing.

“You don’t play well unless you are enjoying yourself.”

Rhys admits there was a part of him that wanted to prove a point when Slough let him go. Still only 24, he is now continuing to thrive having been reunited with Enfield manager Gavin Macpherson and goalkeeping coach Dean Hurley, under whom he played at Met Police for two seasons.

Unlike most footballers, professional or non-league, it wasn’t until the age of 17 that he started playing football, first as a fullback for eight months, then in goal. Tennis was actually his main sport as a teenager and he even got to play on the hallowed lawns of Wimbledon at an inter-club tournament as a teenager.

But once he chose football, there was no turning back and Rhys is rapidly becoming a cult hero at his new club.

“When Gav called me about coming to Enfield it was hard to say no. I can’t speak highly enough about him or Deano. I need someone who knows my weaknesses and makes me work on them. Deano knows me inside out.”

In terms of how the season might pan out after a better-than-anticipated start to the 2023/24 campaign, he takes a cautious approach. “I’ve always hated predictions so I won’t say where I think we’ll end up but we all have the same target.”

Copyright Notice

All rights reserved re common-law copyright of trade-name/trade-mark, WENDY RICHARDSON© as well as any and all derivatives and variations in the spelling of said trade-name/trade-mark-Common Law Copyright© 1980 by Wendy Richardson©. Said common-law trade-name/trade-mark, WENDY RICHARDSON©, may neither be used, nor reproduced, neither in whole nor in part, nor in any manner whatsoever, without the prior, express, written consent and acknowledgement of Wendy Richardson© as signified by the red-ink signature of Wendy Richardson©, hereinafter “Secured Party”. With the intent of being contractually bound, any juristic person, as well as the agent of said juristic person, consents and agrees by this Copyright Notice that neither said juristic person, nor the agent of said juristic person, shall display, nor otherwise use in any manner, the common-law trade-name/trade-mark WENDY RICHARDSON©, nor the common-law copyright described herein, nor any derivative of, nor any variation in the spelling of WENDY RICHARDSON©, without the prior, express, written consent and acknowledgment of Secured Party, as signified by Secured Party’s signature in red ink. Secured Party neither grants, nor implies, nor otherwise gives consent for any unauthorised use of WENDY RICHARDSON©, and all such unauthorised use is strictly prohibited. Secured Party is not now, nor has Secured Party ever been, an accommodation party, nor a surety, for the purported debtor, i.e. “WENDY RICHARDSON,” nor for any derivative of, nor for any variation in the spelling of, said name, nor for any other juristic person, and is so-indemnified and held harmless by Debtor, i.e. “WENDY RICHARDSON,” in Hold-Harmless and Indemnity Agreement No. WR-090180-HHIA dated the Ninth Day of the First Month in the Year of Our Lord One Thousand Nine Hundred and Eighty against any and all claims, legal actions, orders, warrants, judgments, demands, liabilities, losses, depositions, summonses, lawsuits, costs, fines, liens, levies, penalties, damages, interests, and expenses whatsoever, both absolute and contingent, as are due and as might become due, now existing and as might hereafter arise, and as might be suffered by, imposed on, and incurred by Debtor for any and every reason, purpose, and cause whatsoever. Self-executing Contract/Security Agreement in Event of Unauthorised Use: By this Copyright Notice, both the juristic person and the agent of said juristic person, hereinafter jointly and severally “User”, consent and agree that any use of WENDY RICHARDSON© other than authorised use as set forth above constitutes unauthorised use, counterfeiting, of Secured Party’s common-law copyrighted property, contractually binds User, renders this Copyright Notice a Security Agreement wherein User is debtor and Wendy Richardson© is Secured Party, and signifies that User: (1) grants Secured Party a security interest in all of User’s assets, land, and personal property, and all of User’s interest in assets, land, and personal property, in the sum certain amount of £500,000.00 per each occurrence of use of the common-law-copyrighted trade-name/trade-mark WENDY RICHARDSON©, as well as for each and every occurrence of use of any and all derivatives of, and variations in the spelling of WENDY RICHARDSON©, plus costs, plus triple damages; (2) authenticates this Security Agreement wherein User is debtor and Wendy Richardson© is Secured Party, and wherein User pledges all of User’s assets, land, consumer goods, farm products, inventory, equipment, money, investment property, commercial tort claims, letters of credit, letter-of-credit rights, chattel paper, instruments, deposit accounts, accounts, documents, and general intangibles, and all User’s interest in all such foregoing property, now owned and hereafter acquired, now existing and hereafter arising, and wherever located, as collateral for securing User’s contractual obligation in favour of Secured Party for User’s unauthorised use of Secured Party’s common-law-copyrighted property; (3) consents and agrees with Secured Party’s filing of a Financing Statement with the Office of the Secretary of State and Intellectual Property Enterprise Court, hereinafter “Court”, as well as in any county recorder’s office, wherein User is debtor and Wendy Richardson© is Secured Party; (4) consents and agrees that said Financing Statement described above in paragraph “(3)” is a continuing financing statement, and further consents and agrees with Secured Party’s filing of any continuation statement necessary for maintaining Secured Party’s perfected security interest in all of User’s property and interest in property, pledged as collateral in this Security Agreement and described above in paragraph “(2)”, until User’s contractual obligation theretofore incurred has been fully satisfied; (5) consents and agrees with Secured Party’s filing of any Financing Statement, as described above in paragraphs “(3)” and “(4)”, as well as the filing of any Security Agreement, as described above in paragraph “(2)”, in the Court, as well as in any county recorder’s office; (6) consents and agrees that any and all such filings described in paragraphs “(4)” and “(5)” above are not, and may not be considered, bogus, and that User will not claim that any such filing is bogus; (7) waives all defences; and (8) appoints Secured Party as Authorised Representative for User, effective upon User’s default re User’s contractual obligations in favour of Secured Party as set forth below under “Payment Terms” and “Default Terms,” granting Secured Party full authorisation and power for engaging in any and all actions on behalf of User including, but not limited by, authentication of a record on behalf of User, as Secured Party, in Secured Party’s sole discretion, deems appropriate, and User further consents and agrees that this appointment of Secured Party as Authorised Representative for User, effective upon User’s default, is irrevocable and coupled with a security interest. User further consents and agrees with all of the following additional terms of Self-executing Contract/Security Agreement in Event of Unauthorised Use: Payment Terms: In accordance with fees for unauthorised use of WENDY RICHARDSON© as set forth above, User hereby consents and agrees that User shall pay Secured Party all unauthorised-use fees in full within ten (10) days of the date User is sent Secured Party’s invoice, hereinafter “Invoice,” itemising said fees. Default Terms: In event of non-payment in full of all unauthorised-use fees by User within ten (10) days of date Invoice is sent, User shall be deemed in default and; (a) all of User’s property and property pledged as collateral by User, as set forth in above in paragraph “(2),” immediately becomes, i.e. is, property of Secured Party; (b) Secured Party is appointed User’s Authorised Representative as set forth above in paragraph “(8)”; and (c) User consents and agrees that Secured Party may take possession of, as well as otherwise dispose of in any manner that Secured Party, in Secured Party’s sole discretion, deems appropriate, including, but not limited by, sale at auction, at any time following User’s default, and without further notice, any and all of User’s property and interest, described above in paragraph “(2),” formerly pledged as collateral by User, now property of Secured Party, in respect of this “Self-executing Contract/Security Agreement in Event of Unauthorised Use,” that Secured Party, again in Secured Party’s sole discretion, deems appropriate. Terms for Curing Default: Upon event of default, as set forth above under “Default Terms,” irrespective of any and all of User’s former property and interest in property, described above in paragraph “(2)”, in the possession of, as well as disposed of by, Secured Party, as authorised above under “Default Terms,” User may cure User’s default only re the remainder of User’s said former property and interest property, formerly pledged as collateral that is neither in the possession of, nor otherwise disposed of by, Secured Party within twenty (20) days of date of User’s default only by payment in full. Terms of Strict Foreclosure: User’s non-payment in full of all unauthorised-use fees itemised in Invoice within said twenty(20)-day period for curing default as set forth above under “Terms for Curing Default” authorises Secured Party’s immediate non-judicial strict foreclosure on any and all remaining former property and interest in property, formerly pledged as collateral by User, now property of Secured Party, which is not in the possession of, nor otherwise disposed of by, Secured Party upon expiration of said twenty(20)-day default-curing period. Ownership subject to Common-Law Copyright, Copyright Witness Service Statement and Security Agreement filed at Court.

Record Owner: Wendy Richardson©, Autograph Common Law Copyright © 1980. Unauthorised use of “Wendy Richardson” incurs same unauthorised-use fees as those associated with WENDY RICHARDSON©, as set forth above in paragraph “(1)” under “Self-executing Contract/Security Agreement in Event of Unauthorised Use.”

We offer licence advertising for local businesses

Email licences@socialspider.com
Call 07732 000430

LICENSING ACT 2003 Notice of Application for a New Premises Licence

Notice is hereby given that **Agron Hoxha** has applied to the Licensing Authority of London Borough of Enfield for a Premises Licence to permit:

- **Supply of alcohol by retail consumption on the premises from Monday to Sunday from 10:00 to 23:00 and opening hours of the premises are Monday to Sunday from 06:00 to 23:00 including Bank holidays and Public holidays for the premises A & A Coffee Shop situated at 28 London Road, Enfield EN2 6ED.**

The public register where applications are available to be viewed by members of the public can be accessed online by visiting <https://new.enfield.gov.uk/services/business-and-licensing/> and following the link to the Licensing register. Email licensing@enfield.gov.uk to request a copy of the application within 28 days from the date of this notice.

Any person wishing to submit relevant representations concerning this application must give notice by emailing licensing@enfield.gov.uk, giving in detail the grounds of the representation no later than: **23/10/2023**.

Representations received by post will not be accepted.

Representations must include your full name and address.

Representations must be relate to one or more of the four Licensing Objectives: the prevention of crime and disorder, public safety, the prevention of public nuisance and the protection of children from harm.

It is an offence, under section 158 of the Licensing Act 2003, to knowingly or recklessly make a false statement in connection with an application for a premises licence. A person guilty of an offence is liable on summary conviction to a fine not exceeding level five on the standard scale.

Dated: 25th of September 2023
Bilimway Ltd. Tel: 07813 101 092

LICENSING ACT 2003 Notice of Application for a New Premises Licence

Notice is hereby given that **Arberi Dervishaj** has applied to the Licensing Authority of London Borough of Enfield for a Premises Licence to permit:

- **Supply of alcohol by retail consumption on and off the premises from Monday to Sunday from 11:00 to 23:00 and opening hours of the premises are Monday to Sunday from 11:00 to 23:00 including Bank holidays and Public holidays for the premises Pitta Pan situated at 8 Dennis Parade, Winchmore Hill Road, Enfield N14 6AA.**

The public register where applications are available to be viewed by members of the public can be accessed online by visiting <https://new.enfield.gov.uk/services/business-and-licensing/> and following the link to the Licensing register. Email licensing@enfield.gov.uk to request a copy of the application within 28 days from the date of this notice.

Any person wishing to submit relevant representations concerning this application must give notice by emailing licensing@enfield.gov.uk, giving in detail the grounds of the representation no later than: **23/10/2023**.

Representations received by post will not be accepted.

Representations must include your full name and address.

Representations must be relate to one or more of the four Licensing Objectives: the prevention of crime and disorder, public safety, the prevention of public nuisance and the protection of children from harm.

It is an offence, under section 158 of the Licensing Act 2003, to knowingly or recklessly make a false statement in connection with an application for a premises licence. A person guilty of an offence is liable on summary conviction to a fine not exceeding level five on the standard scale.

Dated: 25th of September 2023
Bilimway Ltd. Tel: 07813 101 092

HELP US GROW THE DISPATCH

Enfield Dispatch is published by Social Spider Community News, a not-for-profit social enterprise. Our mission is to hold authority to account and provide a platform for the community. But because we have no shareholders or wealthy backers we rely on local people and organisations to support our journalism. The number of supporters making monthly contributions has nearly doubled in a year – helping us to break even and look at how we can grow as a publication.



WITH CONTINUED SUPPORT FROM DISPATCH READERS WE AIM TO:
Produce more local journalism | Expand the size of the paper | Distribute to more locations

This month, 196 readers like you helped us cover 19% of our monthly costs. While the paper remains free to read in print and online, every penny of income is reinvested in our local journalism. Can you support us with £5 per month to help us do more?

Find out more at: enfielddispatch.co.uk/support-us

OUR CURRENT SUPPORTERS

Derek Grant, Young Notes Ed Balleny, Suzanne Beard, Elizabeth Crosthwait Chris Kaufman Susan Cook Basil Clarke John Naughton Right at Home Enfield, MumSing Choir., Lloyd Tew-Cragg Andrew Warshaw Neil Churchill, Dan Wright, Anthony Fisher William Yates Carole Stanley Mervyn Maggs Aditya Chakraborty Norman Bennett Vivien Giladi Greg Andrews The Old Enfield Charitable Trust Laura Davenport Mick Wood Francis Sealey, Caroline Banks, Joe Hickey, Petr Mitterbach Tracy Hughes, Kristiana Heapy, Neil Bachelor, John Crowther, Hannah Salvidge, Sean Wilkinson, Julia Daniel, Philip Ridley Robert Pite, Deborah Dalgleish, Steve King, Dana Roberts, Lauri Clarke, Julian Rhys-Williams, Anne Cullen, Ross Cunningham, Diana Goforth, Kirsten Lowe, Aurora Yaacov, Sylvia Collicott, Paula Lamont, Liz Wright, Elsie Rigden, Adam White, Sue Grayson Ford, Sangeeta Waldron, Joe Studman, Zoe White, Harriet Ray, Hannah Dyson, Julie Nedza, Peter Krakowiak, Lynda Dyson, Chris Skilbeck, Peter Campling, Alison Shepherd, Chris Graham, Per Hansen, Hari Ramanathan, Lindsay Rawlings, Carlo Rimini, Dennis Donoghue, Bhasmank Mehta, Harry Redmond, Anita Jena-Smol, Jim Shepherd, Graham Halle, Keith Comley, Thomas Whiteway, Anthony Maddox, Neil Littman, Janet Carrick, Tricia Sharpe, Robert Dawes, Paul O'Brien, Richard Mapleston, Graham Cleur, Evan Hughes, Isobel Whittaker, Andrew Murray, Debbie McVitty, Richard Whitaker, Mark Shaw, Peter Moutell, Jane Maggs, John Cole, Vanessa Wiseman and Pat Kane, Caroline Bernard Moxey, Ioannis Chronakis, Caley Montgomery, Janice Nunn, Amy Williams, Su Fairbairn, Linda Bartell, Fran Holmes, Elizabeth Hart, Helen Menzies, Boyd Goldie, Yasemin Brett, Christopher Dey, Pauline Burdon, Helen Karamallakis, Tanya Ruth Sampson, Kim Pickering, Sharron Spice, Maria McCaul, Ruby Sampson, Colourword Translations, Cristina Agudo, Garry Kousoulou, Pamela Rayner, Susan Davies, Frances Warboys, Pamela Stansall, Seren Catering and Events, Michael Dickinson, Richard Stones Natasha Boydell Martyn Stogden Rupert Price Andrew Irvine Meryn Cutler Karl Brown, Kay Heather, Jerome O'Callaghan Matt Burn Martin Russo Marilyn hamilton Bill Linton, Enfield Over 50s Forum, Mr. A Cleary, Stephen Evans, Ryan Hebbs, Bush Hill Park Residents Association, David Mickleburgh, John Machin, Carol Fisk, Sheila Spooner, Ben Sulaiman, Pat Kane, Sarah Jackson, Liz Gilbert, Edward Smith, Jenny Noon, Josepha Scotney, Alison Parker, Vicki Pite, Barrie Lane, John Woodger, Rob Hastings, Malcolm Sleath, Jeni Barker, Sarah Heyward, Nick Mayer, Martyn Axon, Margaret McHugh, Keith Morvan, Alice Kay, Liz Partridge, Graham Kilwin, Colin Younger, Clare Rogers, Hal Haines, Patrick Laurence, Carole Todd, Phil Gooch, Patrick Robinson, Helen Osman, Edward Bowden, Ruth Donaldson, Melvyn Newman, The Enfield Society, Friends of Hillyfields.

